

NIKE BASE

In 1958 a Nike base was established in the Puente hills to the north of Brea. Thirty two acres were leased from Shell Oil Company. The facility consisted of 24 buildings and 3 missile silos. It was designated as an operation missile facility at combat preparedness.

The most prominent building was a large tracking or search radar where enemy aircraft is picked up. The bat eared monster was called an "A-Bar". Prior to 1964 the Ajax missiles were used, then a change was made to Hercules.

When in full production, the base had 129 Battery Members, 39 personnel on drill status who took 2 weeks of training a year plus 90 full time employees. The payroll was \$1,000,000 a year. The Canine Corps or guard dogs guarded the base by night. Three head of sheep were acquired to graze and keep the wild grass down after a fire in 1970 scorched some of the buildings.

The base was closed June 30, 1971. In 1973 Brea acquired the site and planned to use it as a recreational park area. But in 1985 the city gave up its claim, deciding it would be too costly since a highway would need to be built in addition to development and upkeep.

NE 21, 1965

Attack

Cold War Remnant Is Being Destroyed

■ **History:** Nuclear missile base near Brea is one of few left in Southland. At one time, there had been 16.

By H.G. REZA
TIMES STAFF WRITER

They were America's first sentries in the Cold War, built on hilltops and in Southland neighborhoods in an era when "duck and cover" was a classroom drill and children learned to recognize the flash of a nuclear explosion.

Now, one of the last of 16 Nike missile sites dotting Orange and Los Angeles counties is being demolished this month.

The base, built on two hilltops in the Puente Hills near Brea, had three huge magazines, each about 20 feet deep from which missiles—both Ajax and Hercules—could be brought to the surface and launched.

"We're destroying a little bit of history. . . ." said Glenn D. Barin, an engineer with Montgomery Watson Constructors, a Pasadena company hired by the National Park Service to do the demolition. When the job is completed this month, the federal government will hand the land over to a local governmental agency, possibly for a Los Angeles County Sheriff's De-

partment training facility. Today, most of the missile sites are, their remnants stripped of identity that made them a part of a more frightening time. In a few decades—from 1954 to the present—encircled the Los Angeles area in a "Ring of Super-sonics" to protect the region from nuclear bombers.

Please see NIKE, B10

Campaign to Save Former Missile Sites Grows



DON KELSEN / Los Angeles Times

Brea's Nike missile site, which housed nuclear warheads during the Cold War, is being demolished.

Missile Ring

Nike missile sites were part of an air defense system designed to protect such key industries as aerospace, ship building, transportation and communications, as well as military installations in the Los Angeles area. Ten of those sites, including two in Orange County, had nuclear warheads.



prompting fears that the nuclear warhead had ruptured. Fortunately, it did not, but Evans said that as a precaution, "many, many people" living nearby in the Pittsburgh suburb were evacuated while troops checked for radiation.

The Army offered little or no information about the sudden evacuation, but "nobody really complained," Evans said.

There were close calls in Los Angeles too. In 1966, a brush fire in Los Pinetos, near Newhall, claimed 11 lives and came dangerously close to destroying the Nike site where nuclear missiles were based. The soldiers doubled as firefighters and repelled the flames just yards from the base's perimeter.

A 1959 Army report about the 211 Nike sites throughout the country recounted the difficulty that military authorities had in acquiring land from cities and private owners.

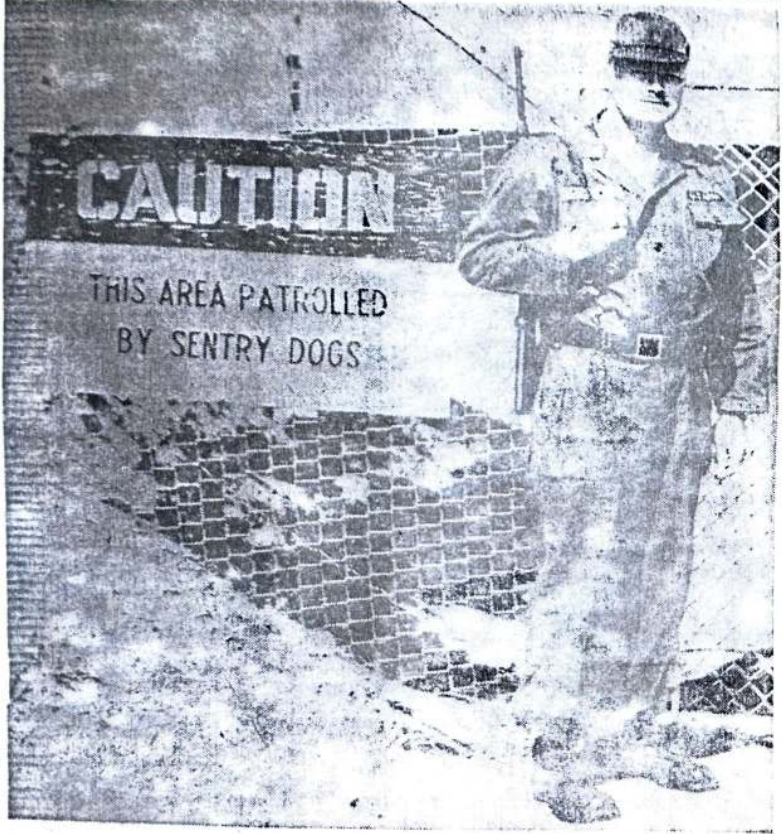
Prop. 36 Would Devastate the Drug Court System

John Merchant is a retired aerospace engineer and consultant in Needham, Mass. E-mail: merchant@mediana.net.

Privileged

RY D... e launc... also R... red controller... autonomously... the trans... three-dimen... primitive farming technology will be... geous and not so courageous) will be... men and women, old and young, cour... should consist of a limited option, me... manded equivalent mission.

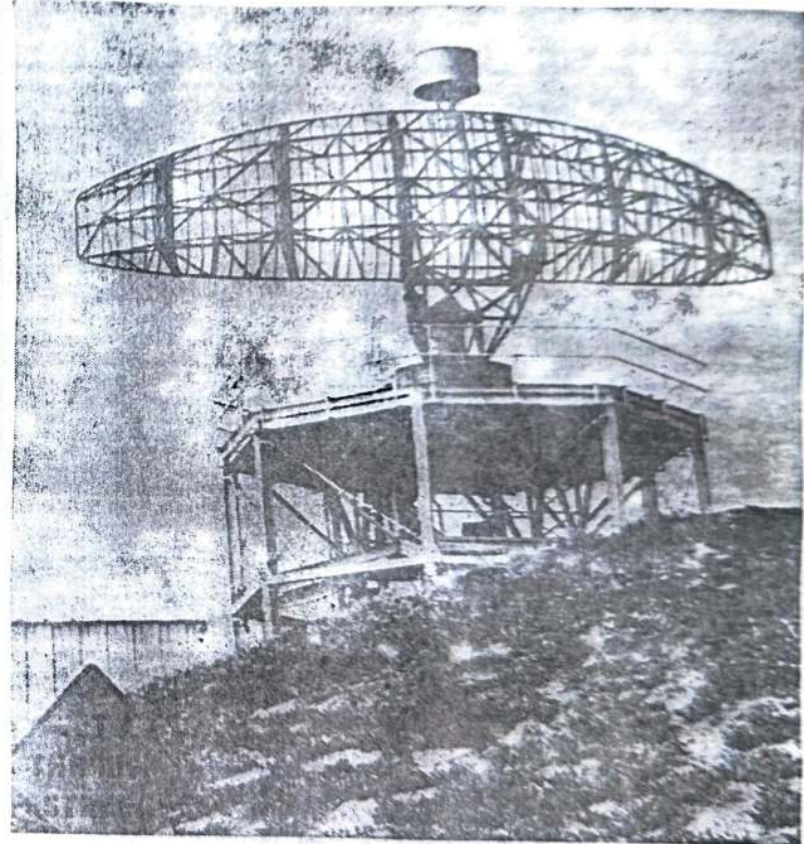
Brea Nike Base Guards Area Against Enemy Attack



SENTRY DUTY — Guarding the missile launching area is SP 4 Roy Meadows. The highly classified area is also guarded by trained dogs

which attack on command. The dogs are particularly effective for night time sentry duty.

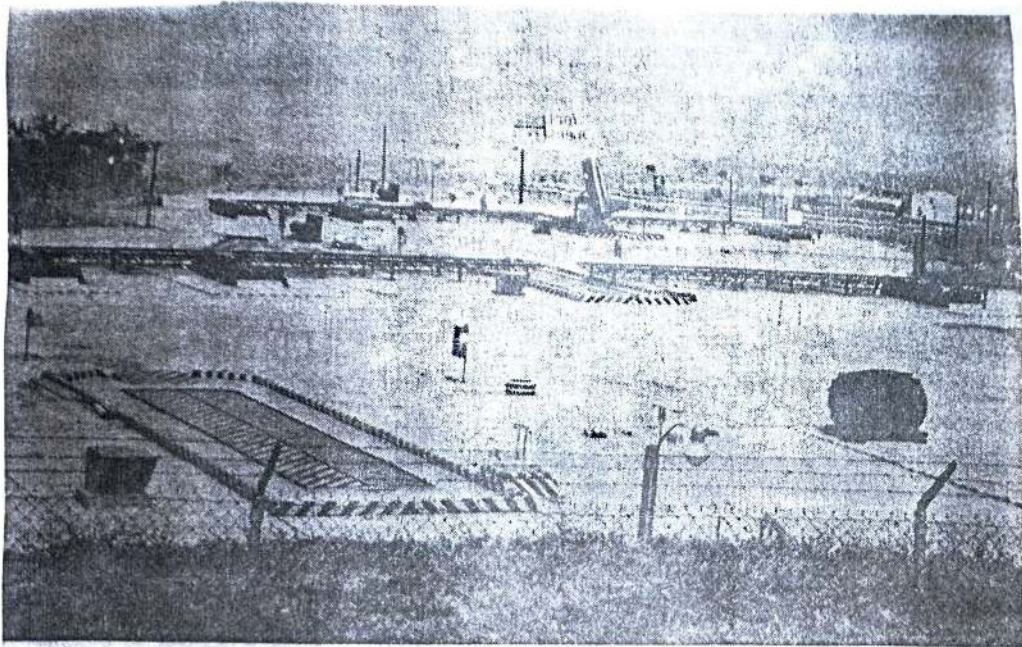
STAR-PROGRESS PHOTO



A-BAR — A familiar sight to the people of Brea is this ultimate battery acquisition (search) radar which can be seen scanning the skies

from its hilltop perch. The bat-eared monster above is called the "A-Bar" by the Nike men.

STAR-PROGRESS PHOTO

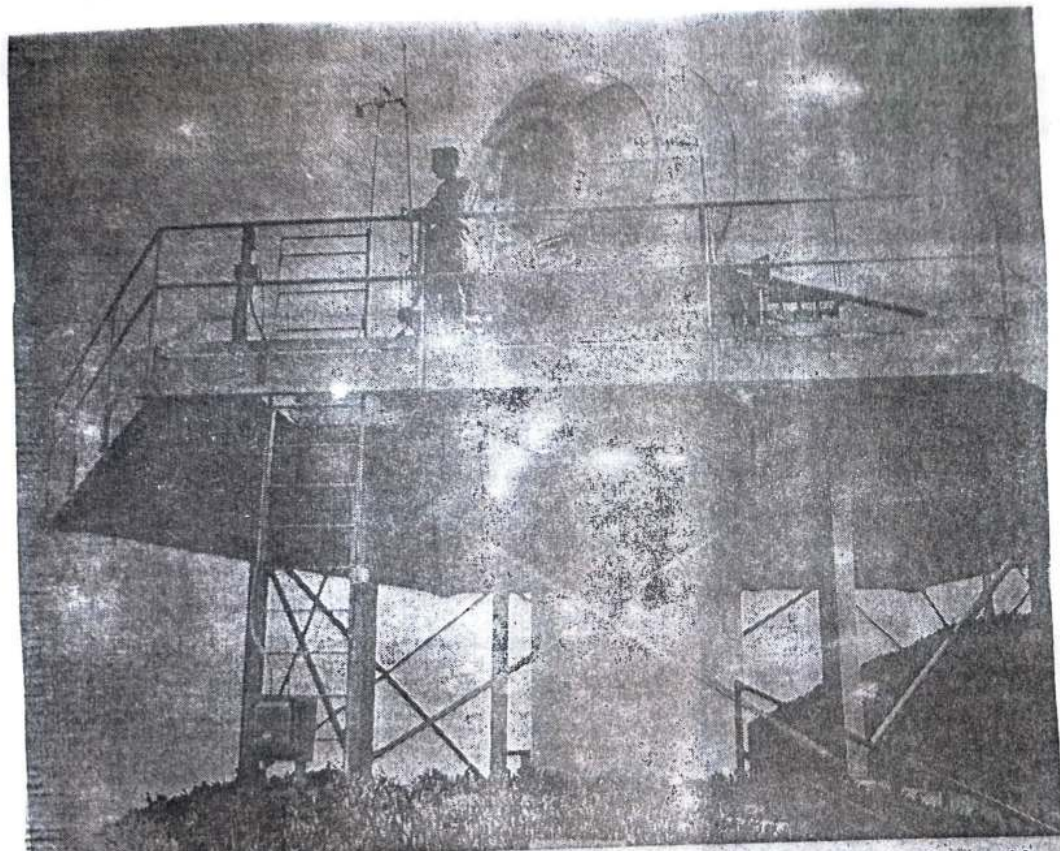


MISSILE FIRING AREA — Here is the area from which missile are fired at Nike Base, carefully

protected by barbed wire fence and guarded by Canine Corps.

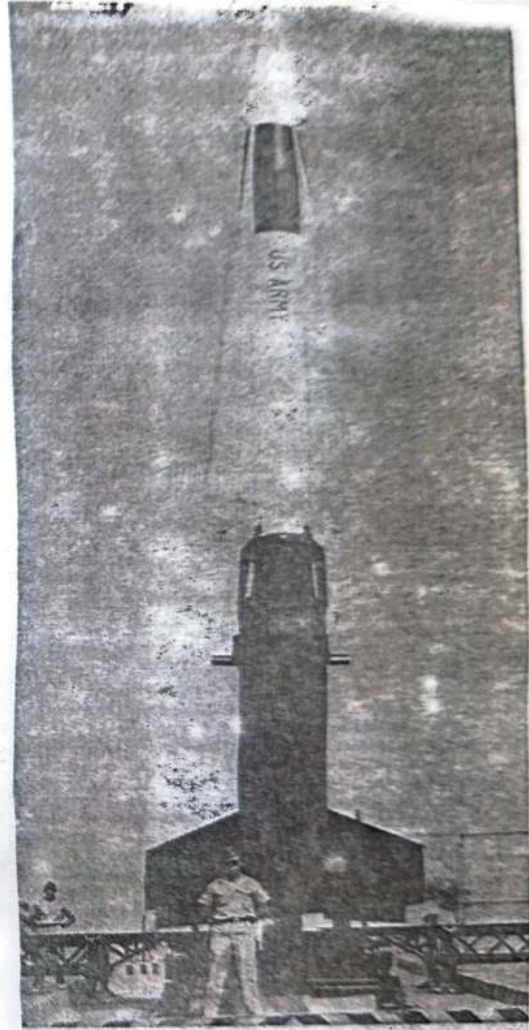


CONTROL BOARD — Here are technicians at Nike Base control board from which directions are given.

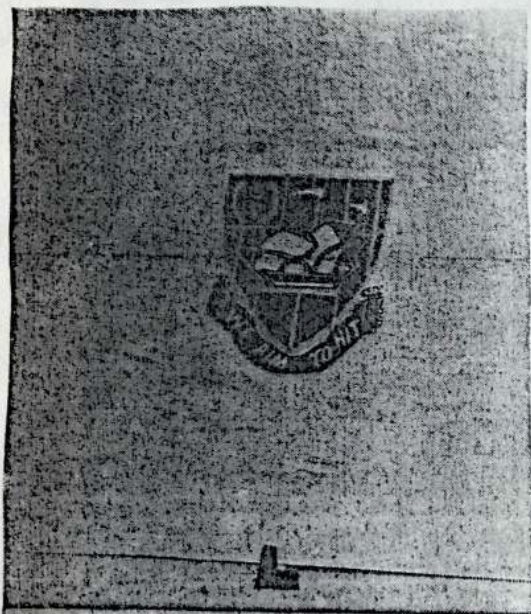


TARGET TRACKING RADAR — Sgt. Glenn Anderson stands on the platform of the target tracking radar at the Nike Base. Enemy aircraft is first

picked up by acquisition radar before it gets within range. It is then transferred to the equipment pictured



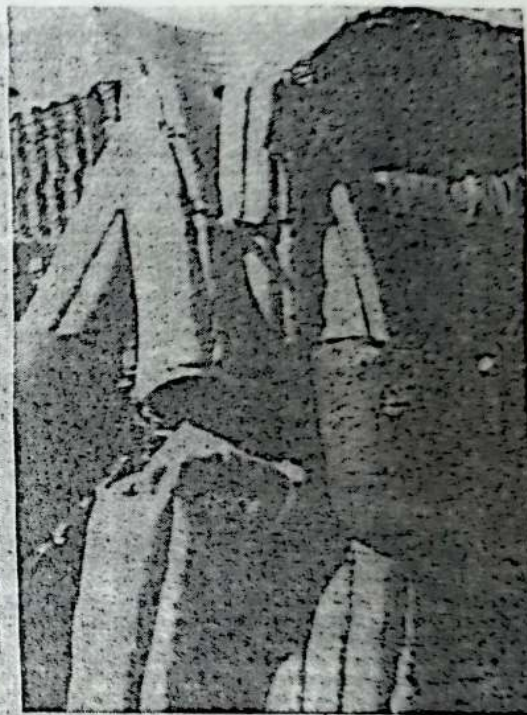
READY FOR FIRING — Missile at Brea Nike Base poised for firing.



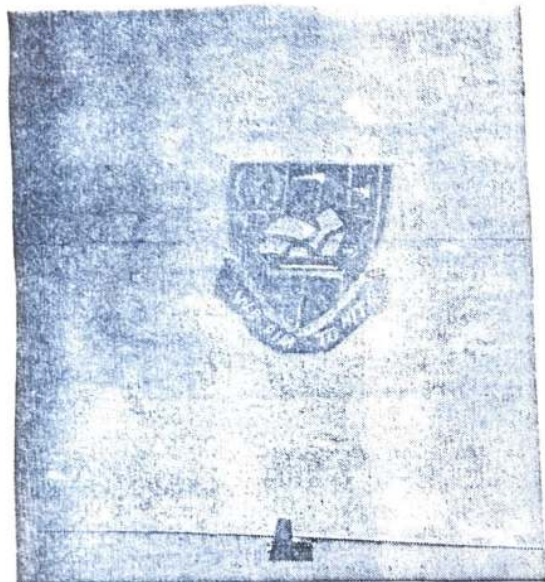
INSIGNIA AT ENTRANCE of Nike Base says
"We Aim to Hit"



DOUBLE CHECK — PFC George Bauder, left, gets some instructions from Capt. Howard G. Christ, battalion commander of the National Guard at the Nike Base. In the background is the launching area for the missiles which defend the Los Angeles area against enemy air attack.



CANINE CORPS SUIT — Here is suit worn by Canine Corps trainers at Nike Base.



INSIGNIA AT ENTRANCE of Nike Base says
"We Aim to Hit"



DOUBLE CHECK — PFC George Bauder, left, gets some instructions from Capt. Howard G. Christ, battalion commander of the National Guard at the Nike Base. In the background is the launching area for the missiles which defend the Los Angeles area against enemy air attack.



CANINE CORPS SUIT — Here is suit worn by Canine Corps trainers at Nike Base.

1971

Base Closing Marks End of Era

By DAVE TAYLOR
News Tribune Writer

BREA — Somebody asked the officers at the Nike Base if there was going to be any formal deactivation ceremony on June 30.

Lt. Michael Robertson, commander of the base, replied, "No."

But another officer remarked with a sad smile, "We had one last night."

He referred to the announcement made late Wednesday by the Pentagon that the Brea base was one of half-dozen California sites being deactivated at the end of this fiscal year.

The former battery commander at the base, now Maj. Howard Christ, Buena Park, once told the Brea Rotary Club that the payroll of the base was \$1 million a year.

DRILL STATUS

The base had 129 battery members including 39 personnel who were on drill status, who took two weeks of training once a year, and 90 full-time employees.

"We will make every effort to relocate the full-time employees (with National Guard units) within the State of California," said Lt. Robertson.

He said the men on drill status will be transferred to other National Guard units.

The base came to Brea

Hills in 1958 from Playa del Rey, and became a National Guard unit in 1961.

Previously, it was a United States Army unit.

Lt. Robertson explained that all site material will be sent to supply channels and part will go to units in this area.

This will be through Army supply channels.

REMAINS INTACT

The rest of the Air Defense System, which remains intact, will receive some of the supplies.

It was explained that the Stanton Nike Base remains, one of six which protect the metropolitan Los Angeles area. Deactivation of the Brea Nike Base, actually located in Los Angeles County, will reduce by one of the Los Angeles sentinels.

There are three National Guard facilities of this type in the L.A. area.

Speaking of sentinels, the guard dogs which were trained at the base, will return to Lackland Air Force Base in Texas where they will be sent to units where there is a shortage of dogs.

And some other animals will have to be disposed of. Appropriately named, Chief Warrant Officer Edward Sorrow, bought five head of sheep about three weeks ago

to graze the hillsides around the base and keep the grass from reaching heights which could contribute to fire danger.

SHEEP TO GO

"Now we won't get a chance to find out what will happen," he said. "We'll have to take the sheep to the sale barn."

Nike base personnel had a narrow escape last fall when flames from a grass fire flickered near the base. Embers set fire to a truck that Robertson was driving. Some of the buildings were "scorched," said one Nike base member.

But now these experiences are part of a vanishing installation, like the lifeless foundations which will soon exist when the base is abandoned.

In times like these, history is often recalled. The base, located on 46 acres leased from Shell Oil Co., will have its land returned to the Army

Corps of Engineers and from there will go back to Shell.

The base was activated here in 1958, and became National Guard in 1964.

WON AWARDS

Its 10-year average for firing was 96.8 per cent, in annual service practice.

It won the best firing unit award twice in Army Regional Air Defense Command; was second and third one time each, in the years since being in Brea.

The battery in the past seven years was second in the western region five out of seven years.

It had Ajax missiles prior to 1964, then switched to Nike Hercules.

Now the Brea "C" Battery, 4th Battalion, 251 Artillery, will become part of local area history along with the short-lived Brea Airport and the baseball field where Walter Johnson pitched against Babe Ruth.



COMMANDER — Last commander of the Nike Base is Lt. Michael Robertson standing at sign in front of orderly room. Base boasts "E" for excellence in combat preparedness.



SENTRY DOG — Sentry dogs at the base will be among the inhabitants leaving to deactivation of the base of June 30. They go to Lackland Air Force Base, Tex., for signment.



END OF A SILO—Officials take one last look at the missile silo which is being filled at park site. Times photos by Jack Boettner

BREA — The Orange County Transit District microbus crawled along a winding road in the Puente Hills, past grazing Holstein cows and working oil wells.

As the bus rounded a bend at the top of a 1,500-foot climb, silver-haired Brea Mayor Sam Cooper pointed to his right and enthusiastically proclaimed: "There's Catalina Island. What a sight!"

The sight was more than Catalina. It took in the vast panorama of Orange County, all the way to the sea and a goodly portion of Los Angeles County to the north.

The nine-passenger bus and another just like it had reached the site of the abandoned 32-acre Nike Missile Base that is being transformed by the Seabees into a city wilderness-style park.

The first phase of that conversion has been completed. And that is why city officials, officers of the Naval Mobile Construction Battalion 16 of Los Alamitos and media representatives had gathered on the majestic hilltop where, on a clear day, you can almost see forever.

There was a brief ceremony near a partially filled missile silo. Mayor Cooper, City Manager Wayne Wedin and Seabees Comdr. Lawrence H. Burks took turns at the microphone.

Wedin praised the Seabees, saying their efforts soon will make the eight-year dream of a park a reality. He took note of "the unfettered, spectacular view of Orange and Los Angeles counties." The site is in Los Angeles County, five miles from the Brea City Hall.

Then there was a tour of the old base which, at one time, provided Brea with the best protection of any city in the United States, according to Army officials.

In 1968, Nike-Hercules Battery C, stationed on the hilltop, captured its fourth award in 10 years for accuracy and efficiency in test-firing its missiles.

What basically has been accomplished in the first-phase of the project is the elimination of safety hazards. Of the 29 buildings on the site, 28 have been demolished and cleared away. Two of three missile silos have been filled with debris and dirt. The third silo is nearly filled.

CEREMONY IN BREA

Ex-Base Showing Signs of a Park

BY JACK BOETTNER
Times Staff Writer

Metal has been salvaged by an Orange company. One major hurdle remains, however — what to do with huge chunks of concrete that once were the foundations of the barracks.

The Seabees do not have the equipment to crush the concrete slabs. The city is thinking about buying a piece of machinery to do it.

Nevertheless, Ron Molendyke, city director of community services, had a good word for the residents of north Orange County who are anxious to use the facility.

"The city expects to open the park on a reservation basis this summer," Molendyke said. "It will be used on weekends by such groups as the Boy Scouts, Girl Scouts, YMCA and YWCA."

"What we'll have here is a much-needed camping site. There'll be riding and hiking and outdoor education. We're working on another access road that will connect to Brea Canyon Road."

At present, the only road into the park site is through the Shell oil fields.

The city has hired Recreation Systems of Fullerton to master plan the park.

Creating a park on a site that once bristled with high-powered weaponry has been a long uphill struggle.

With the help of then Rep. Charles Wiggins (R-Fullerton), the city was successful in acquiring the former Nike Missile Base at no cost in 1973. Acquisition was made through the White House Legacy of Parks program.

The main condition for acquisition was that the city make the site available for public recreation.

Vandals periodically had invaded the remote area, shattering windows and splintering some of the buildings.

City officials first turned to the U.S. Army Reserve Forces to help alleviate the hazards and clear the site for park purposes. But the Army units did not have the capabilities to perform the task.

The council then wrote a letter to President Carter and soon got a response from the Reserve Naval Construction Force Command in Kansas City.

The job of site clearing fell to Reserve Naval Construction Battalion 16 (Seabees) at Los Alamitos, under Comdr. Marvin C. Wallingford.

The battalion's mission is to provide a skilled crew that can be mobilized for national emergencies or natural disasters. The Nike site proved an excellent training ground.

Wallingford said, "These projects not only serve the



LAST TIME AROUND—Persons attending park ceremony climb steps to inspect foundation for a radar installation before structure is demolished.

community, but provide valuable team training for the Seabees. This enhances the battalion's mobilization readiness."

Master Chief Petty Officer Al Nelson and Chief Petty Officer Michael Dooner have been in charge of the Nike project.

Brea has spent \$6,329 on the park site. The Seabees have put in 7,200 hours at an estimated value of \$72,000 using cranes, bulldozers, dump trucks, forklifts and trucks in the process.

City officials say the rental value of the donated equipment would be about \$10,000. Thus, they calculate the money saved the city by the Seabees to date is nearly \$82,000.

Mayor Cooper, back aboard his bus for the return to City Hall, said the park project is a good example of what can be accomplished when military and civilian officials work for a goal "in the spirit of cooperation."

Cooper said that when the park opens "we'll have more reservation requests than we can handle. This kind of a facility has been needed far too long," he added.

Phase I Nike Site Park Renovation Unveiled

By T.R. HONAN
DSP Staff Writer

BREA — For many of the newer residents of the Brea community, talk of the Nike Site can be confusing, with people often unsure where it is located, or even what it is (or was).

Those who have been around a little longer remember the Nike Site, located in the hills north of Central Avenue, when it was an operational missile facility at combat ready preparedness. The army pulled out of the site years ago and the City of Brea acquired it in 1973, for development as a recreational and park area.

Last Friday afternoon a group of dignitaries and reporters made the five-mile trip up to the site to hold a press conference marking completion of the first phase of the future park's renovation.

vation.

On hand along with city officials were representatives from the Reserve Naval Construction Battalion Sixteen, more commonly known as the Seabees. The Battalion, based in Los Alamitos, has worked at the site on weekends, demolishing remaining structures and filling in empty missile silos.

According to city officials, the Seabees have expended approximately 7,200 hours of work, valued at \$72,000, in addition to the use of their heavy work machinery, such as a 4-ton crane and dump trucks.

Ron Molendyk, community services director, noted the city had investigated many different uses for the site, including using the missile silos as possible museums. Molendyk noted the city was frustrated in these attempts through what he termed "federal guidelines," restricting development of the areas. The city is presently working with the Federal Bureau of Outdoor Recreation on a master plan for the park.

Molendyk noted the city hopes to include some type of commercial development at the park, to help defray operating costs.

The park would most likely become a spot for overnight camping by area youth groups as well

as a picnicking and exploring site on a daily basis.

Mayor Sam Cooper said the

Seabees had put in a "remarkable amount of work" at the site, for which the city was very



(Star-Progress Photo)

SEABEE AND THE CITY — Brea Mayor Sam Cooper, left, and Brea City Manager Wayne Wedin listen as Master Chief Petty Officer Al Nelson describes the work Seabees performed at the Nike Base site. A press conference marking completion of the future park's first phase was held Friday.

grateful. The city itself has expended an estimated \$4,330 on the project, in meals and man hours. "The cooperation we have received is just terrific and we know it will provide countless hours of enjoyment to the public for years to come," Cooper noted.

The battalion is commanded by Marvin C. Wallingford and the work on the site was supervised by Master Petty officer chief Al Nelson and Chief Petty Officer Miihael Dooner.

The 32-acre site is located on a hilltop approximately 1,400 feet high and Friday's clear weather afforded a view that encompassed far-away Catalina.

Phase I Nike Site Park Renovation Unveiled

By T.R. HONAN
DSP Staff Writer

BREA — For many of the newer residents of the Brea community, talk of the Nike Site can be confusing, with people often unsure where it is located, or even what it is (or was).

Those who have been around a little longer remember the Nike Site, located in the hills north of Central Avenue, when it was an operational missile facility at combat ready preparedness. The army pulled out of the site years ago and the City of Brea acquired it in 1973, for development as a recreational and park area.

Last Friday afternoon a group of dignitaries and reporters made the five-mile trip up to the site to hold a press conference marking completion of the first phase of the future park's renovation.

vation.

On hand along with city officials were representatives from the Reserve Naval Construction Battalion Sixteen, more commonly known as the Seabees. The Battalion, based in Los Alamitos, has worked at the site on weekends, demolishing remaining structures and filling in empty missile silos.

According to city officials, the Seabees have expended approximately 7,200 hours of work, valued at \$72,000, in addition to the use of their heavy work machinery, such as a 4-ton crane and dump trucks.

Ron Molendyk, community services director, noted the city had investigated many different uses for the site, including using the missile silos as possible museums. Molendyk noted the city was frustrated in these attempts through what he termed "federal guidelines," restricting development of the areas. The city is presently working with the Federal Bureau of Outdoor Recreation on a master plan for the park.

Molendyk noted the city hopes to include some type of commercial development at the park, to help defray operating costs.

The park would most likely become a spot for overnight camping by area youth groups as well

as a picnicking and exploring site on a daily basis.

Mayor Sam Cooper said the

Seabees had put in a "remarkable amount of work" at the site, for which the city was very

grateful. The city itself has expended an estimated \$6,330 on the project, in meals and man hours. "The cooperation we have received is just terrific and we know it will provide countless hours of enjoyment to the public for years to come," Cooper noted.

The battalion is commanded by Marvin C. Wallingford and the work on the site was supervised by Master Petty officer chief Al Nelson and Chief Petty Officer Miihael Dooner.

The 32-acre site is located on a hilltop approximately 1,400 feet high and Friday's clear weather afforded a view that encompassed far-away Catalina.



(Star-Progress Photo)

SEABEE AND THE CITY — Brea Mayor Sam Cooper, left, and Brea City Manager Wayne Wedin listen as Master Chief Petty Officer Al Nelson describes the work Seabees performed at the Nike Base site. A press conference marking completion of the future park's first phase was held Friday.



END OF A SILO—Officials take one last look at the missile silo which is being filled at park site.
Times photos by Jack Boettner

BREA — The Orange County Transit District microbus crawled along a winding road in the Puente Hills, past grazing Holstein cows and working oil wells.

As the bus rounded a bend at the top of a 1,500-foot climb, silver-haired Brea Mayor Sam Cooper pointed to his right and enthusiastically proclaimed: "There's Catalina Island. What a sight?"

The sight was more than Catalina. It took in the vast panorama of Orange County, all the way to the sea and a goodly portion of Los Angeles County to the north.

The nine-passenger bus and another just like it had reached the site of the abandoned 32-acre Nike Missile Base that is being transformed by the Seabees into a city wilderness-style park.

The first phase of that conversion has been completed. And that is why city officials, officers of the Naval Mobile Construction Battalion 16 of Los Alamitos and media representatives had gathered on the majestic hilltop where, on a clear day, you can almost see forever.

There was a brief ceremony near a partially filled missile silo. Mayor Cooper, City Manager Wayne Wedin and Seabees Comdr. Lawrence H. Burks took turns at the microphone.

Wedin praised the Seabees, saying their efforts soon will make the eight-year dream of a park a reality. He took note of "the unfettered, spectacular view of Orange and Los Angeles counties." The site is in Los Angeles County, five miles from the Brea City Hall.

Then there was a tour of the old base which, at one time, provided Brea with the best protection of any city in the United States, according to Army officials.

In 1968, Nike-Hercules Battery C, stationed on the hilltop, captured its fourth award in 10 years for accuracy and efficiency in test-firing its missiles.

What basically has been accomplished in the first-phase of the project is the elimination of safety hazards. Of the 29 buildings on the site, 28 have been demolished and cleared away. Two of three missile silos have been filled with debris and dirt. The third silo is nearly filled.

CEREMONY IN BREA

Ex-Base Showing Signs of a Park

BY JACK BOETTNER
Times Staff Writer

Metal has been salvaged by an Orange company. One major hurdle remains, however — what to do with huge chunks of concrete that once were the foundations of the barracks.

The Seabees do not have the equipment to crush the concrete slabs. The city is thinking about buying a piece of machinery to do it.

Nevertheless, Ron Molendyke, city director of community services, had a good word for the residents of north Orange County who are anxious to use the facility.

"The city expects to open the park on a reservation basis this summer," Molendyke said. "It will be used on weekends by such groups as the Boy Scouts, Girl Scouts, YMCA and YWCA."

"What we'll have here is a much-needed camping site. There'll be riding and hiking and outdoor education. We're working on another access road that will connect to Brea Canyon Road."

At present, the only road into the park site is through the Shell oil fields.

The city has hired Recreation Systems of Fullerton to master plan the park.

Creating a park on a site that once bristled with high-powered weaponry has been a long uphill struggle.

With the help of then Rep. Charles Wiggins (R-Fullerton), the city was successful in acquiring the former Nike Missile Base at no cost in 1973. Acquisition was made through the White House Legacy of Parks program.

The main condition for acquisition was that the city make the site available for public recreation.

Vandals periodically had invaded the remote area, shattering windows and splintering some of the buildings.

City officials first turned to the U.S. Army Reserve Forces to help alleviate the hazards and clear the site for park purposes. But the Army units did not have the capabilities to perform the task.

The council then wrote a letter to President Carter and soon got a response from the Reserve Naval Construction Force Command in Kansas City.

The job of site clearing fell to Reserve Naval Construction Battalion 16 (Seabees) at Los Alamitos, under Comdr. Marvin C. Wallingford.

The battalion's mission is to provide a skilled crew that can be mobilized for national emergencies or natural disasters. The Nike site proved an excellent training ground.

Wallingford said, "These projects not only serve the



LAST TIME AROUND—Persons attending park ceremony climb steps to inspect foundation for a radar installation before structure is demolished.

community, but provide valuable team training for the Seabees. This enhances the battalion's mobilization readiness."

Master Chief Petty Officer Al Nelson and Chief Petty Officer Michael Dooner have been in charge of the Nike project.

Brea has spent \$6,329 on the park site. The Seabees have put in 7,200 hours at an estimated value of \$72,000 using cranes, bulldozers, dump trucks, forklifts and trucks in the process.

City officials say the rental value of the donated equipment would be about \$10,000. Thus, they calculate the money saved the city by the Seabees to date is nearly \$82,000.

Mayor Cooper, back aboard his bus for the return to City Hall, said the park project is a good example of what can be accomplished when military and civilian officials work for a goal "in the spirit of cooperation."

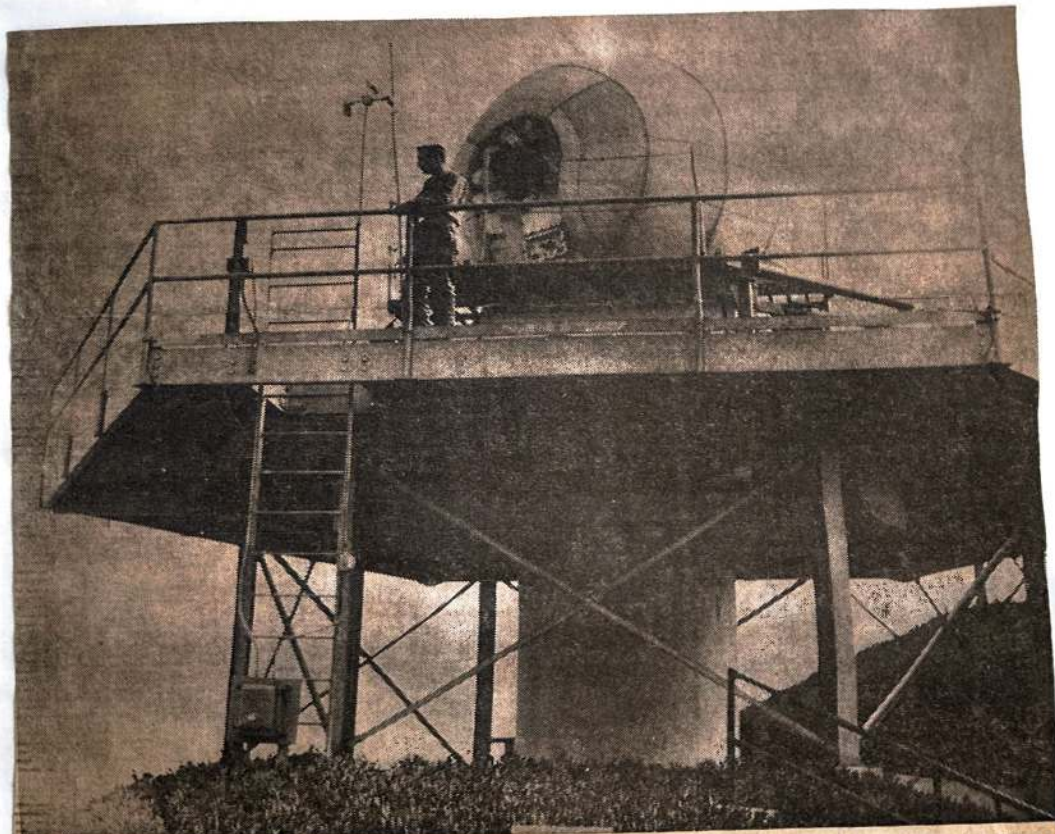
Cooper said that when the park opens "we'll have more reservation requests than we can handle. "This kind of a facility has been needed far too long," he added.



DOUBLE CHECK — PFC George Bauder, left, gets some instructions from Capt. Howard G. Christ, battalion commander of the National Guard at the Nike Base. In the background is the launching area for the missiles which defend the Los Angeles area against enemy air attack.



CANINE CORPS SUIT — Here is suit worn by Canine Corps trainers at Nike Base.



TARGET TRACKING RADAR — Sgt. Glenn Anderson stands on the platform of the target tracking radar at the Nike Base. Enemy aircraft is first

picked up by acquisition radar before it gets within range. It is then transferred to the equipment pictured.



READY FOR FIRING — Missile at Brea Nike Base poised for firing.

1971



COMMANDER — Last commander of the Nike Base is Lt. Michael Robertson standing at sign in front of orderly room. Base boasts "E" for excellence in combat preparedness.

Base Closing Marks End of Era

By **DAVE TAYLOR**
News Tribune Writer

BREA — Somebody asked the officers at the Nike Base if there was going to be any formal deactivation ceremony on June 30.

Lt. Michael Robertson, commander of the base, replied, "No."

But another officer remarked with a sad smile, "We had one last night."

He referred to the announcement made late Wednesday by the Pentagon that the Brea base was one of half-dozen California sites being deactivated at the end of this fiscal year.

The former battery commander at the base, now Maj. Howard Christ, Buena Park, once told the Brea Rotary Club that the payroll of the base was \$1 million a year.

DRILL STATUS

The base had 129 battery members including 39 personnel who were on drill status, who took two weeks of training once a year, and 90 full-time employees.

"We will make every effort to relocate the full-time employees (with National Guard units) within the State of California," said Lt. Robertson.

He said the men on drill status will be transferred to other National Guard units.

The base came to Brea

Hills in 1958 from Playa del Rey, and became a National Guard unit in 1964.

Previously, it was a United States Army unit.

Lt. Robertson explained that all site material will be sent to supply channels and part will go to units in this area.

This will be through Army supply channels.

REMAINS INTACT

The rest of the Air Defense System, which remains intact, will receive some of the supplies.

It was explained that the Stanton Nike Base remains, one of six which protect the metropolitan Los Angeles area. Deactivation of the Brea Nike Base, actually located in Los Angeles County, will reduce by one of the Los Angeles sentinels.

There are three National Guard facilities of this type in the L.A. area.

Speaking of sentinels, the guard dogs which were trained at the base, will return to Lackland Air Force Base in Texas where they will be sent to units where there is a shortage of dogs.

And some other animals will have to be disposed of. Appropriately named, Chief Warrant Officer Edward Sorrow, bought five head of sheep about three weeks ago

to graze the hillsides around the base and keep the grass from reaching heights which could contribute to fire danger.

SHEEP TO GO

"Now we won't get a chance to find out what will happen," he said. "We'll have to take the sheep to the sale barn."

Nike base personnel had a narrow escape last fall when flames from a grass fire flickered near the base. Embers set fire to a truck that Robertson was driving. Some of the buildings were "scorched," said one Nike base member.

But now these experiences are part of a vanishing installation, like the lifeless foundations which will soon exist when the base is abandoned.

In times like these, history is often recalled. The base, located on 46 acres leased from Shell Oil Co., will have its land returned to the Army

Corps of Engineers and from them will go back to Shell.

The base was activated here in 1958, and became National Guard in 1964.

WON AWARDS

Its 10-year average for firing was 96.8 per cent, in annual service practice.

It won the best firing unit award twice in Army Regional Air Defense Command: was second and third one time each, in the years since being in Brea.

The battery in the past seven years was second in the western region five out of seven years.

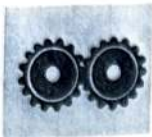
It had Ajax missiles prior to 1964, then switched to Nike Hercules.

Now the Brea "C" Battery, 4th Battalion, 251 Artillery, will become part of local area history along with the short-lived Brea Airport and the baseball field where Walter Johnson pitched against Babe Ruth.



SENTRY DOG — Sentry dogs at the Nike base will be among the inhabitants leaving prior to deactivation of the base of June 30. They will go to Lackland Air Force Base, Tex., for reassignment.

THE CITY OF
BREA
CALIFORNIA



CIVIC CULTURAL CENTER
Number One Civic Center Circle
Brea, California 92621
Telephone (714) 990-7600

CITY COUNCIL

NORMA ARIAS HICKS
MAYOR

February 2, 1983

CARREY NELSON
MAYOR PRO TEM

CLARICE A. BLAMER
COUNCILWOMAN

SAM COOPER
COUNCILMAN

RON ISLES
COUNCILMAN

John D. Cherry
Associate Regional Director
Resource Management and Planning
United States Department of the Interior
National Park Service
Western Region
450 Golden Gate Avenue, Box 36063
San Francisco, California 94102

Re: NIKE 29 Site--Status Report

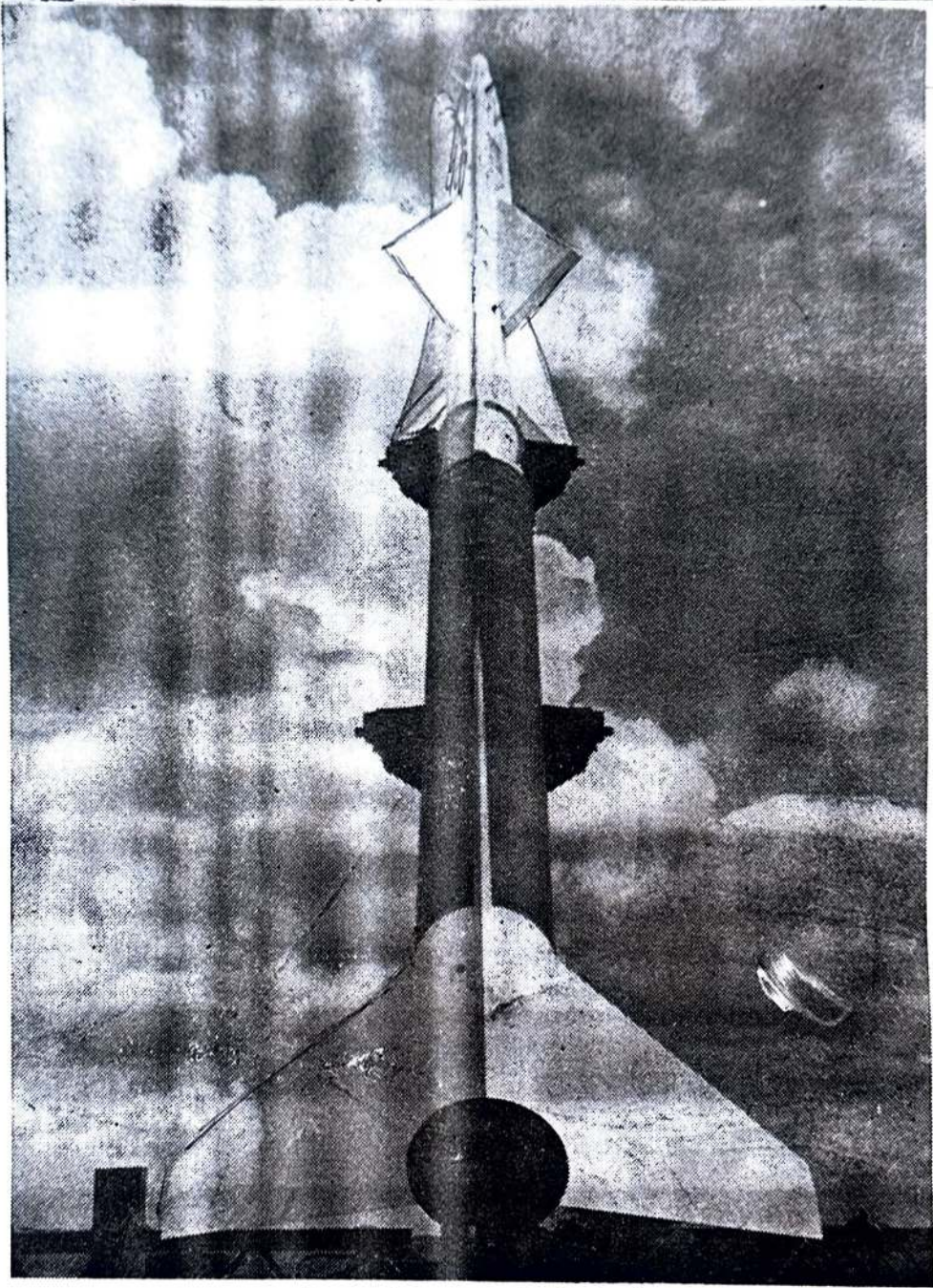
Dear Mr. Cherry:

Your letter to Mr. Wedin on the above topic dated January 19, 1983 recently came to my attention. In response to that letter, please be advised that Mr. Wedin no longer is City Manager and that Mr. Ed Wohlenberg will assume the position of City Manager for the City of Brea on February 14, 1983. In addition, subsequent to your discussions with Councilman Don Fox last spring, the composition of the City Council has changed. However, please be assured that the modifications to City personnel has not dissuaded the Council from its intention to continue the development of a master plan for the subject site and to retain and use that site for public park purposes.

Once Mr. Wohlenberg assumes his duties as City Manager, he will be in contact with you immediately. The development of the NIKE 29 site for park purposes remains of the highest priority of the City Council of the City of Brea.

Sincerely,

Norma A. Hicks
Mayor



GUARDIAN OF PEACE.—Silhouetted against a cloudy sky this giant Nike, and others like it, form the powerful striking force of Battery A, 933 Missile Battalion, located in the hills above Brea. PROGRESS PHOTO

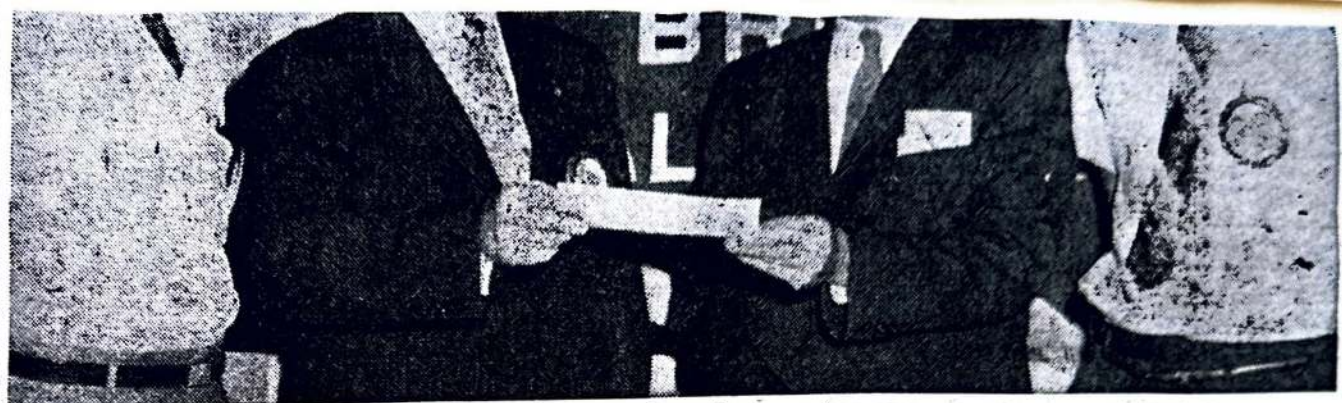
ESTIMATE
 Description of Work
 Clear & Grub
 Concrete Removal
 Roadway Excavation
 Furnish & Apply Water
 Untreated Rock Base
 Liquid Asphalt (SC-2 Prime
 Ct.)
 Plant Mixed Surfacing
 Class "A" Concrete (curbs,
 gutters, etc.)
 Asphalt Emulsion (Pt. Bdr. &
 Seal)

are approximate only, being
 arison of bids, and the County
 or by implication, agree that
 will correspond therewith, but
 se or decrease the amount of
 ork, or to omit portions of the
 ecessary by the Engineer.

visions of Section 1770 of the
 in Section 5-01 "Laws to be ob-
 ifications, the Board of Super-
 neral prevalling rate of wages
 one which shall be as follows:

SCALE

	Rate Per Hour*
	\$3.81
	3.09
tor (concrete or asphalt plant)	3.92
	3.825
	3.85
g, mechanical tamping or fin-	4.11
p type)	3.57
iving type)	4.21
obile mixer)	4.21
nd or wagon)	3.17
an	4.40
	3.33
	3.57
reet paving only)	2.98
	3.57
	2.88
	4.11
per	3.33
struction	2.88
uding any type of power blade)	4.21
neumatic and electric tools, vi-	3.09
llar mechanical tools not sep-	3.65
ge)	3.90
	3.825
	3.92
	4.075
er Tamper, Scraper & Push	4.11
water-level capacity or more)	



STUDENT LOAN FUND of Orange County State College has been given a \$100 boost by the Brea Rotary club. The club presented Dr. William Langsdorf, president of the college (second from right), the money to be used to aid a student to further his studies at the new college in Fullerton. The check was

presented by Lester McLennan, club president (second from left). Looking on are Councilman Leo West, scholarship chairman for the Brea Rotarians (left), and Errol Smith, youth service chairman. The club requested that if a Brea student applied for a loan, the Rotary club fund be used to assist.



AERIAL KILLER — The Brea Nike site is the nest of these 20 foot-long destroyer. The Nike missile, here being worked on in the "re-vetting area" by these electronic technicians, are capable of attaining an alti-

tude of 3,000 feet in the first three seconds of flight. It seeks out, by means of reflected radio frequencies, all enem aircraft and then destroys them. The Nike Base holds open house every Sunday from 2-4 p. m.

to labor more than eight (8) hours during any one calendar day, except in cases of extraordinary emergency caused by fire, flood or danger of life or property, and except as provided in Section 1817 of said Labor Code. The Contractor

BREA NIKELBASE

Democrats Plan
Regular Meeting

son born to Mr. and Mrs. Eugene Russell of Berkley. Russell, formerly of Brea works at the University of

CEMENT

Everything at one location.

ROSS HILL

Ross Hill Mortuary
 Every service, including
 casket selection, and
 funeral direction...
 convenience for the ac-
 cording to friends...
 ...Time payments
 family's budget...
 call... OXfor

ROSS HILL
 Memorial

C I T Y O F B R E A

Inter Office Memorandum

March 18, 1983

TO: Mayor and City Council
FROM: Councilman Sam Cooper
SUBJECT: NIKE SITE

A field review of the Nike Site was conducted on Thursday, March 17, with Councilwoman Blamer, Commissioner Barbara Haluska, City Manager Ed Wohlenberg, City Engineer Sam Peterson and Acting Director of Community/Development Services Norm Canchola.

Alternatives discussed:

- 1) Do nothing; return land to Feds.
- 2) Provide interim use on weekends and holidays for group campouts.
 - a) Security transporting of groups.
 - b) Liability Insurance.
 - c) Supply portable toilets.
- 3) Build road to Brea Canyon -- approximately 13,000 linear feet recommended by former City Engineer Milo Keith and confirmed by current City Engineer Sam Peterson. Cost = \$1.5 to \$2 million (approx.) Need to talk to Supervisor Pete Schabarum, Los Angeles County.
 - a) Talk to local industrialists for possible help/suggestions, whatever.
 - b) Talk to colleges and universities for some use.
 - c) Perhaps some T. V. coverage from area stations concerning the help needed to get the park going should be considered.
 - d) Upper and lower sites of useable land -- 22 acres.
 - Lower site - best use for any commercial. Vista view of Brea
 - Upper site - Vista view of Los Angeles County areas, also.

I will be in touch with Lt. Commander Selvridge of the Seabees to advise him that as soon as the Council makes a decision I will be in touch.

Question -- What does the Council wish to do at this time?

cc: Clarice Blamer
Barbara Haluska
Ed Wohlenberg
Sam Peterson
Norm Canchola

SC/vh

CITY OF BREA

Inter Office Memorandum

March 11, 1983

TO: Mayor and City Council
FROM: Councilman Sam Cooper
SUBJECT: NIKE SITE

Just a quick update to let you know that I have finally been able to contact Lt. Commander Ross Selvidge, who is the Operations Officer for the local Seabee outfit in Los Alamitos. I have been trying to contact someone for the past four weeks and have finally succeeded.

As soon as I can get some material together from our City Engineer, Sam Peterson, I will be back in contact with Lt. Commander Selvidge to set up a meeting with all concerned; namely, Lt. Commander Selvidge, Mayor Hicks, Ed Wohlenberg, Sam Peterson and myself, to see what steps need to be taken in order to proceed with getting a road from the Nike Site.

I will keep you advised as I progress on this.

SC/vh

cc: Ed Wohlenberg
Sam Peterson

NIKE SITE

Nike Base a Recreational Facility

By DAN BISHER
Good News Reporter

Because of a Brea Girl Scouts suggestion a former U.S. Army Nike missile base will soon become a spectacular park and recreation area.

The project began nearly three years ago when Daphne Wolfert presented her idea to the Brea City Council. The Council thought enough of Daphne's idea to appoint a committee to study the possibilities.

The 32 acre missile base is located north of downtown Brea 1,400 feet above the valley in the Puente Hills. It offers a panoramic view of most of Los Angeles and Orange County. On a clear day one can see the Pacific Ocean and east to Pomona; north to Hollywood and south to Irvine.

According to Ron Molendyk, City of Brea community services director, the scenic value is unmatched.

"For scenic value there is no other site like this in Orange County," said Molendyk.

Molendyk added, "The view is fantastic but what is unique about the site is one minute you're surrounded by the city and people and the next minute you're away from it all." Brea residents will be able to enjoy the view and begin using the new park once the site is opened to the public.

City Manager Wayne We-din has stated, "We'd like to open it up as quickly as we possibly can."

There has been some discussion by the City Council to partially open the area for camping. However, no definite decisions have been made to date.

Molendyk is presently working on a master plan to develop areas within the site. He said it would take about ten months to fully develop the plan.

The new park was made official when the City Council formally accepted the deed from the Army Corps of Engineers last summer. Acceptance of the deed came after the federal government declared the base surplus land and the city took possession.

Existing buildings on the base are in remarkably good shape even though vandals ransacked the area. Most of the structures are of concrete block construction.

Funds for developing the new park have come from varying sources including county revenue sharing fund, city funds and organizational contributions.

Reported development cost have been quite minimal considering the bargain the city received when it accepted the site. The original property cost \$2.6 million to acquire minus

buildings and utilities and the city received it for nothing . . . to use for public benefit as a recreation area. The present budget for the site is approximately \$250,000.

Several ideas have been expressed as to how the buildings on the site might be utilized. Included were arts and crafts rooms, meeting rooms for Boy and Girl Scouts, skating rinks, archery and pistol ranges and a theatre.

There are still several "bugs" to be worked out including an agreement with the Shell Oil Company who owns much of the land surrounding the site. But city officials appear optimistic that in the near future, Brea will have a park and recreation area extraordinaire.

When the park is finished and open to the public, somebody ought to make sure Daphne Wolfert is on hand. All of her work in obtaining signatures for a petition; letters to newspaper editors, President Nixon, Governor Reagan, congressmen, senators, city officials; and speeches to the city council should be recognized.

We can be glad that Daphne's parents, Mr. and Mrs. Raymond Wolfert, never followed that silly old rule that children should be seen and not heard!

The
Good
pa



NIKE MISSILE
the Nike M

BOY'S & GIRLS
MAKE
\$10 - \$20

A MONTH!

AGES 11-15

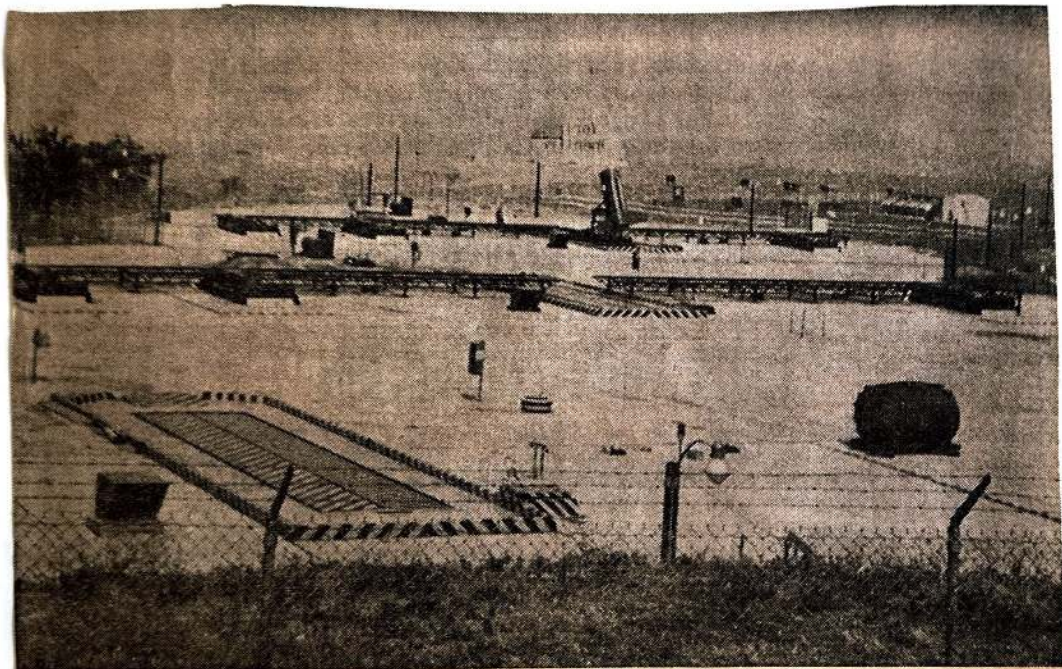
YOU CAN BE

NEWSPAPER CARRIER
APPLICATIONS TAKE

Brea's
Good News
paper



138



MISSILE FIRING AREA — Here is the area from which missile sare fired at Nike Base, carefully

protected by barbed wire fence and guarded by Canine Corps.



CONTROL BOARD — Here are technicians at Nike Base control board from which directions are given.

Brea Nike Base Guards Area Against Enemy Attack

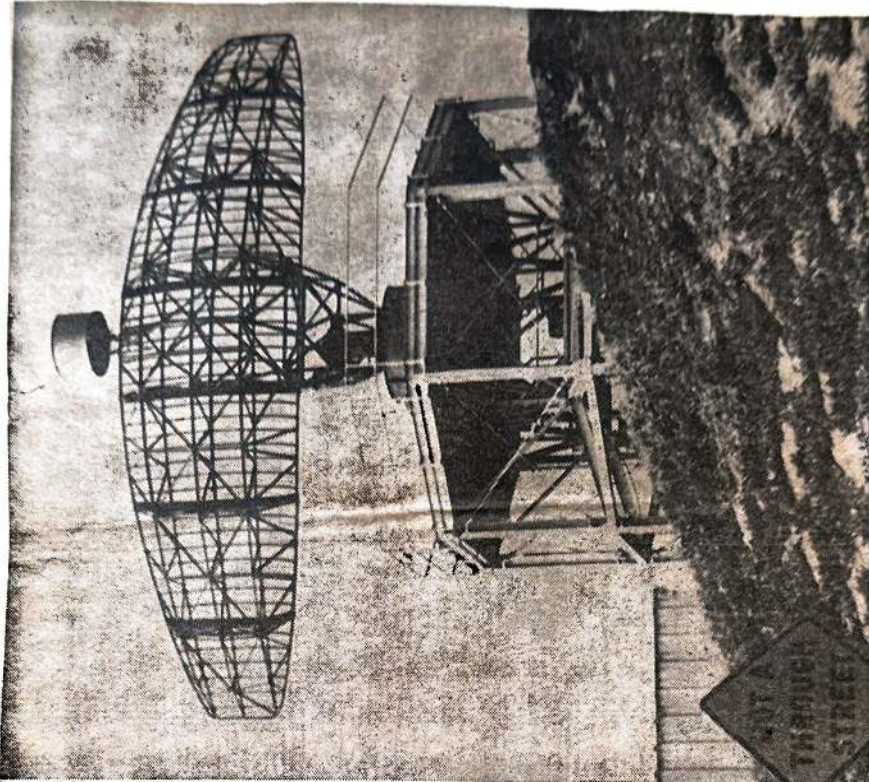
JUNE 21, 1965



SENTRY DUTY — Guarding the missile launching area is SP 4 Roy Meadows. The highly classified areas is also guarded by trained dogs

which attack on command. The dogs are particularly effective for night time sentry duty.

STAR-PROGRESS PHOTO



A-BAR — A familiar sight to the people of Brea is this ultimate battery acquisition (search) radar which can be seen scanning the skies

from its hilltop perch. The bat-eared monster above is called the "A-Bar" by the Nike men.

STAR-PROGRESS PHOTO