

## File: Pepper Tree

★ Pepperwoods On N. Brea Blvd. Will Stay Until State Axe Falls

source = Star-Progress

date = Nov. 6, 1963

note = debate on whether the pepperwoods should be removed or not. discuss what should be done.

• = consists of 3 pages

★ ~~Will Work to Save Trees~~

Stages One-woman Campaign Save Pepperwoods, Eucalyptus

source = Star-Progress

date = Nov 2, 1964

note = Mrs. Anabel Nash held one-woman campaign against cutting pepperwoods. Urged to keep at least one lane of them.

Stated the positive effect of pepperwoods as wind breaking.

• = consists of 3 pages

★ Will Work to Save Trees

source = BP

date = 2/25/1938

note = state highway department vs. people wanting to protect pepperwoods

• = X

★ The Editor Letters to

source = BP

date = 7/22/1966

note = Mrs. D wrote a letter pleading to keep the pepperwood trees.

★ No Action Taken On Pepper Trees

source = DSP

date = 10/8/1968

note = Public Works Director Harold claimed that the trees are in bad condition. Some would maybe last up to 25 yrs & others will not.

★ Brea Boulevard Pepper Trees Given Reprieve

source = DSP

date = 10/23/1968

note = dispute between city commissioners. Basse wants to save all the trees.

Madsen against Basse, due to cost of saving the trees & professional opinion that the trees wouldn't last long.

★ Trees of Historical Interest

source = Brea Historical Society Newsletter

date = January 1981

note = by Dean Millen, talks about the importance of local trees in the area (avocado & citrus)

\* Brea Park's redwood trees are an oddity

Source = The Orange County Register

date = 3/23/1989

note = redwood trees, which are not indigenous to Southern California, were donated to Carbon Canyon Regional Park

\* The Root of the Matter

Source = Brea Progress

date = 4/11/1996

note = Tree roots invade people's water pipe. Decided to plant trees that would not grow out & up. They replaced many ficus trees

\* Redwoods take a green turnb in OC

Source = Ecology (John Westcott / The Register)

date = X

Note = Lowell Schroeder proven that redwood trees can grow well in Southern California as well.

● File Pepper Tree (smaller file)

\* In the Thirties

Source = News Tribune

date = X

note = Shows the past image of Brea Blvd

• = 1 original 1 copy

\* Pepper Trees Doomed

Source = News Tribune

date = 9/10/1965

note = trees had to be moved to complete the intersection

note = 1 original 1 copy

\* Old Trees Doomed

Source = Star-Progress photo

date = 9/15/1965

note = eucalyptus trees along Central Avenue disappearing for development

• = 10 & 1c

\* Pepper Trees Last stand? / Spare That tree

L Star-Progress

L News Tribune

date = 9/1965

note = trying to preserve old trees


• = 10 & 1c

\* Pepperwoods On N. Brea Blvd. Will Stay Until State Ave Fully

Did You Know on this day.

**Beatrice Sessions,**  
**Osteopactor**  
 Blocker Colonic  
 Shockwave-Diathermy  
 Foot Treatment, Dist  
 220 W. Amerigo Ph. 862  
 Fullerton

**Sola's**  
**flowers**  
 809 N. SPADRA, FULLERTON, CAL.  
 PHONE 654

  
**Homer A. Nelson, Opt. D.**  
 OPTOMETRIST  
 Phone 8104 114 N. Lemon St.  
 Anaheim, Calif.

**Dr. H. Holmson, M. D.**  
 Fullerton, Calif.  
 SPECIALIZES IN  
 CHRONIC AILMENTS  
 SERUM TREATMENTS  
 INTERNAL MEDICINE  
 Special Attention Blood, Skin,  
 Stomach, Heart Liver, Kidneys,  
 Weight Reduction, Lung Trou-  
 ble, Nervous, Prostate, Rheu-  
 matic and other chronic ail-  
 ments. Office hours 9 to 12 a.m.  
 1 to 5 p.m. 7 to 8 p.m. Offices  
 Above Harris Drug, 203 N.  
 Spadra. Office phone 1394, Resi-  
 dent Phone 958-W.

**McAulay & Suters**  
 FUNERAL DIRECTORS  
 Superior Ambulance Service  
 Lady Attendant  
 Phone Fullerton 898

**MASONIC MEETING**  
 Odd Fellows Lodge, No. 856, A. F. &  
 A. M. stated meeting on first  
 Tuesday night of each month.  
 A. A. Price, Master.  
 L. W. Hyde, Secretary.

**W. A. CULP**  
**INSURANCE**  
 Notary Public -  
 Theatre Bldg Phone 10

**PLUMBING**  
**& REPAIRING**  
 DAY & NIGHT

**HOW SHAFFER  
 CAME TO BREA**

**HE TOLD COFFEE CLUB THE  
 INCIDENTS**

How the killing of a Mexican truck driver, who was transporting a load of booze through Santa Paula, one night over twenty years ago, brought about the coming to Brea of William D. Shaffer as a manufacturer is an interesting story. Mr. Shaffer himself told the story, a few mornings ago, at a meeting of the Brea Coffee club, where he observed his birthday anniversary by furnishing the cake for the day to the imbibers (coffee).

Shaffer was working in Santa Paula community at the time as a machinist. Previously he had lived at Olinda. This was prior to the famous Volstead act becoming a law, making the whole country dry, according to Mr. Shaffer, but the county of Ventura was dry, with Oxnard being the one wet spot. Those, who desired to drink or obtain liquor, went to Oxnard.

The cities of the county otherwise, including Santa Paula, had strict liquor enforcement ordinances. One of these prohibited the transporting of liquor through the town.

When it became known one day that a Mexican was expected through the city that night with a load of booze, the police officers laid in wait for him. During the melee that resulted, the Mexican was shot and killed by an officer, named Hardy. The widow sued the city and the police force, including Hardy, for damages and got a verdict.

Hardy had an attorney, named Snyder, representing him. It developed that Snyder took over, presumably as attorney fee, a tract of land nearby town that belonged to Hardy. A portion of the tract, which Hardy retained, had potential oil possibilities, and Hardy interested a number of citizens including Shaffer to buy it, thus obtaining money needed as the result of losing the damage suit.

Oil was discovered later and the interest of Shaffer and the others increased in value. Eventually he exchanged it for a sixty-fourth interest in another tract and later he secured additional such interests. In the Hardy tract he had a thirteenth interest. The developing company struck oil and the one-sixty-fourth interests became valuable. The Texas Oil company eventually bought the lease and Shaffer still has a monthly income from the tract.

Looking around for something else to do, other than being employed, Shaffer contacted Bassch, who had started a manufacturing plant here, and to obtain ownership of it Shaffer traded Bassch one of his sixty-fourth interests in the oil tract. Shaffer had a strong desire to get in business for himself. This gave him the opportunity.

This brought Shaffer to Brea in 1922 and here he has since remained, building up the fine manufacturing business of the Shaffer Tool company, the demand for the

**IMPERIAL HIGHWAY  
 TOMORROW NIGHT**

The regular monthly meeting of the Imperial highway association is to be held tomorrow (Saturday) night at the Kinney hotel in Corona. It is understood there will be a representative present of the state highway department. The Corona meeting is at six-thirty o'clock dinner. Members are urged to attend.

**RUDDS ARE IMPROVING**

Mrs. Henry Rudd is improving rapidly in her home on West Birch lane from a major operation, which she underwent recently in the General hospital. Mr. Rudd will be on crutches for another sixty days recuperating from a fall.

**WILL WORK TO  
 SAVE TREES**

**THOSE BIG PEPPERS ALONG  
 NORTH POMONA**

The old proposition of locking the door after the horse is stolen is not going to be true, so far as is concerned the protection of the big pepper trees along North Pomona avenue from the ravages of the highway's ax, when the time comes to broaden that highway, sometime in the future.

This matter has come before both the city planning commission and the Junior Chamber of Commerce. Both have begun steps to protect the very attractive and beautiful line of trees, that were planted years ago along this community's entrance to Brea canyon.

The matter is to be taken up directly with the state highway department, lodging a protest against any harm to the trees, whenever any road widening program may be considered. It is the intention also to name a committee to contact the highway commission as well as the owners of property along extreme North Pomona. The latter is for the purpose of arranging for additional land, if such will be necessary, so that the road may be made double-tracked, with the trees down its center.

It develops too that Ted Craig is one of the most interested citizens in the preservation of those big peppers. He has made several short talks on the subject when addressing fellow Breans and has declared himself willing to go to bat whenever the time comes.

**NOTICE OF ELECTION**

SECTION I. Notice is hereby given that a general Municipal Election will be held in the City of Brea on Tuesday, the 12th day of April, 1938 for the following offices:

Three City Councilmen, each for a full four year term; One City Councilman for a short two year term.

SECTION II. The following proposition will be submitted at said Election:

**THEY'RI  
 HARR**

**LA HABRA**

**La Habra, F**

Habra Towns- ing nearly a (According to unanimously resolutions m Congressman charging him ing the true T with trying to movement for

An outline o en to The Sta mtee, declar record of Mr. checked caref as a traitor to claims was res cess at the pol

The articles local group cc ground and tal In addition, specifc deman man, some of to do with ti ment but are rection of tw gressional abu

They dema work to end th per mile travel he himself r money he has not actually tr help abolish privilege, "use cal campaign mailing."

In closing ti edly inquire, In history as Sheppard be l writes the orig cess of the To

There is no c loca] Townsme odds with Con It is difficult how extensiv among Townse as a whole, all feel that a ve are against hi

**BREA GI  
 RAI**

**CITY TO DI  
 ON B**

Brea is to break over the minute to 8 o of March 16, network.

This has b here through t of Commerce or Scattergood B that time, the gum hour. The ssembled the n forwarded It t receipt of the ment from hin

"We are gol your city (at above). It may low townsmen in.

# Redwoods take a green thumb in OC

**L**owell Schroeder remembers seeing a stand of coastal redwood trees in Placentia back in the 1930s. That's when he first knew that there's no reason the majestic *Sequoia sempervirens* can't grow in Orange County.

Schroeder has been proving it, again and again ever since. In addition to the 17 coastal redwoods in his back yard, Schroeder has given a start to more than 300 redwoods around the county. He simply snaps off slips from the base of one of his trees, nurtures them in pots, and plants them where a friend or relative wants them.

Whenever someone says Coastal redwoods can't grow in Orange County, Schroeder has to chuckle. Redwoods might not be native to the county, and might need a little extra help to survive, but they've thrived everywhere he's planted them. Schroeder, 65, a retired farmer and Poothill High School teacher, started growing redwoods about 26 years ago from slips that his father-in-law gave him. The originals now tower about 50 feet over his home on

Old Grand Street in Santa Ana. Schroeder comes from a pioneering family that arrived in Santa Ana in 1870, a year after the city's founding. The family grew citrus, walnuts and other crops over through the years. An acre of Valencia orange trees that once covered 25 acres still grows alongside Schroeder's redwoods.

Redwoods are not supposed to grow naturally south of about Santa Barbara. But all that redwoods need to thrive in Orange County's relatively dry climate is a sandy soil that lets water penetrate to its deep roots, and occasional but thorough watering, Schroeder said.

Coastal redwoods are the tallest living trees, soaring as high as 300 feet in areas such as Big Sur. They probably won't grow as tall in Orange County, partly because of beatings from Santa Ana winds, Schroeder said. Redwoods here grow to about 50 feet and then start growing outward.

Redwoods have some advantages over many trees in Orange County. Their thin, deep roots won't destroy sidewalks, and the bark is more fire-resistant than

that of most trees.

Schroeder isn't the only one in the county who has had good luck with redwoods. In the 1970s, an anonymous donor gave more than 200 seedlings to be planted in Carbon Canyon Regional Park. Today, the 120 or so trees range from 45 to 60 feet tall, and the grove recently received a new irrigation system.

One area where redwoods haven't done as well is Mission Viejo. At least 14 of the 42 trees planted by the Mission Viejo Co. at the Aliso Viejo community have died, with many others in sticky condition. Schroeder thinks he knows why — a hard, claylike soil won't let water reach the roots.

Schroeder remembers an unorthodox solution his father used, though it might be impractical for Mission Viejo. He used dynamite to loosen the soil.

"I'm not sure they'd want to do that in Mission Viejo," he said. "But it broke up the soil so the roots could grow."

— John Westcott/The Register



Lowell Schroeder of Santa Ana stands by one of his coastal redwoods. He has given a start to more than 300 redwoods around the county.

John Westcott/The Register

# THE ROOT OF THE MATTER

## CITY OF BREA APPROVED STREET TREES

- Fern pine, 40-50 feet — moderate growth.
- Bronze loquat, 15-25 feet — slow growth.
- Brisbane box, 35-40 feet — moderate growth.
- Fire wheel, 20-40 feet — moderate growth.
- Crape Myrtle, 18-30 feet — moderate growth.
- Western redbud, up to 20 feet — moderate growth.
- Bottlebrush, 20-40 feet — moderate growth.
- Paperback Cajeput, 20-40 feet — fast growth.
- Australian willow, 25-30 feet — moderate growth.
- Golden trumpet, up to 25 feet — moderate growth.
- American sweet gum, 20-40 feet — moderate growth.
- Sawleaf Zelkova, 40-60 feet — moderate growth.
- Camphor, 20-40 feet — slow growth.

By Danielle Benson  
Brea Progress

Most people like trees on their property. They enjoy the green bushy look, the blossoming flowers and the shade. But not John Boyd.

"I tell you, trees are meant to discourage people from parking on the streets," the Northwood Street resident said, complaining that the jacaranda on his front sidewalk drops blossoms, nodules and sap throughout the year. "You can't park your car underneath."

Boyd recently filed a claim against the city for \$696 in plumbing repairs because the roots of a jacaranda city officials had planted near his driveway allegedly plugged up his water pipes.

"I was taking my grandson to the doctor and all of sudden I looked and there was about a foot of standing water in my living room," he said. "To make a long story short, the plumber took out two buckets of roots from the pipes under the house."

According to Boyd, the problem started about six years ago with a blight of white flies. City maintenance workers cut down several trees so the invading insects would have nothing to feed on. The blossoming peach tree in front of Boyd's house was a victim.

"So they put in new trees and put an extra one at the very edge of my driveway," Boyd said. "It made no sense."

He said the roots from the tree grew downward and got into the water pipes.

"If there is any place to get in they find it," he said. "Then they get inside and get great nourish-



M. Loren Hernandez/Brea Progress

Ficus trees, once the trees of choice for shade and ground cover, line the walkway on State College Boulevard near the Brea Mall.

ment from the water and grow and grow until they fill up the pipe."

Boyd's story is not a new one.

Tree roots constantly cause residents and city officials headaches because of the problems with sidewalks, pipes, gas lines and streets. But the jacaranda is a relatively new perpetrator. In the past it's been the ficus.

"Ficuses are very invasive trees. They have roots that expand and can crack concrete and cement," said Olinda Nursery owner Carl Breitenfeldt. "The fine roots get into cracks and swell up and cause blockages."

He explained that ficus roots cause harm because they grow out and up — getting into sidewalks, foundations and all types of pipes.

"But you can prevent this with root barriers," he said, noting that these are plastic containers with sides but no bottoms. "This way the roots grow straight down and then horizontally. They go below foundations and not close to sidewalk surfaces."

About 20 years ago, ficuses were the tree of choice for cities in commercial areas because of their bushy, green look. North Brea Boulevard used to be lined with them.

"During redevelopment they came in and tore them down," said Brea Director of Mainte-

nance Services Pat McCarron, noting that there are still ficus trees on the southern half of the boulevard. "We won't put them in front of businesses anymore because they block signs and such. But they are still a good tree in the right circumstances."

McCarron said the city plants ficus in residential and park areas.

Breitenfeldt noted that ficus are still popular in backyards and front lawns, but other trees have taken over as the plantlife for street median strips and public sidewalks.

"Along State College towards the mall there are a lot of *Podocarpus* (fern pine)," Breitenfeldt said. "There are also coconuts palm throughout the city because there is no worry about roots."

The fern pine, crape Myrtle and coconuts palm, Breitenfeldt said, are not invasive because their roots grow slower and don't get into small cracks underground like the ficus.

But ficus remain appealing for their lush look, resistance to drought and thirst for sunlight.

And city officials aren't set on eliminating the tree from its plants altogether.

"We still use them," McCarron said. "Some we've taken out and some we just cut the roots back."

# Orange County Life

## SECRET PLACE

One of the best-kept secrets in Orange County doesn't even belong in Southern California.

Tucked away in a hidden pocket of Carbon Canyon Regional Park in Brea is a grove of redwood trees.

Redwoods are not indigenous to warm, dry Southern California. They rely on the dampness of Northern California or the western Sierra Nevada, where they have grown for thousands of years.

When Carbon Canyon Regional Park was being designed and constructed in the early 1970s, an anonymous donor,

afraid of seeing the trees becoming extinct, donated more than 200 seedlings to the park.

The seedlings were cultivated at the Orange County Industrial Farm — now the James A. Musick Branch Prison just south of the El Toro Marine Corps Air Station — by Mac McDonald, a nurseryman, until they were replanted at Carbon Canyon Regional Park in 1975.

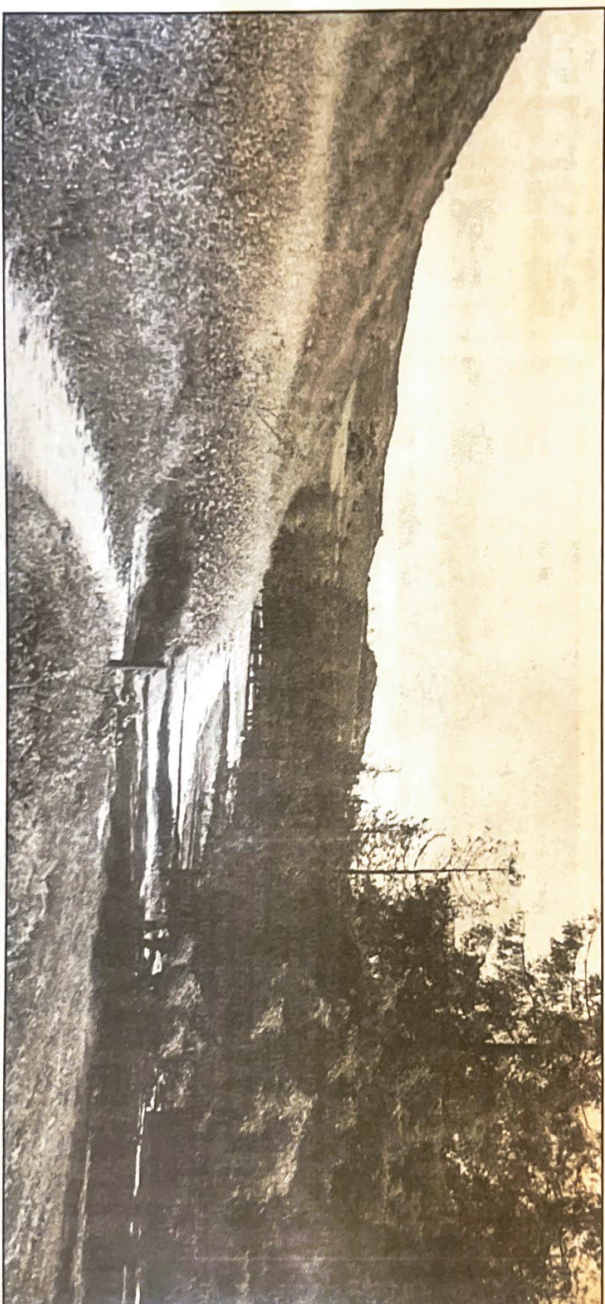
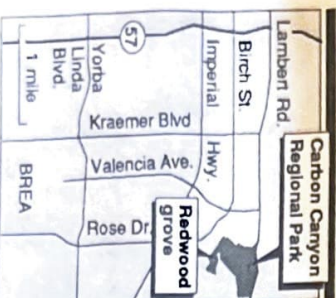
The 120-tree grove covers 5 acres of the park near Carbon Canyon Dam. The trees range in height from 45 to 60 feet and are approximately 15 to 20 years old. A fire killed some of the trees several years ago.

Cliff Caswood, park ranger, said a new irrigation system recently was installed, since the trees depend heavily on moisture. The area surrounding the grove is kept cleared of potential fire hazards, and the trees are pruned periodically.

The grove is at the back of the park, so expect to hike about one scenic mile each way.

The park is open from 7 a.m. to 6 p.m. weekly, and a \$2 gate fee is required. Park hours will be extended to 9 p.m. from April 1 to Oct. 1. For further information call: 949-5252.

Randy Rescoe/The Register



A stand of redwood trees at Carbon Canyon Regional Park in Brea is about a mile's scenic walk from the entrance to the park.

Randy Rescoe/The Register

## Brea park's redwood trees are an oddity

# NEWSLETTER



401 S. Brea Boulevard  
Brea, California, 92621

Vol. 4 No.1

January 1986

## TREES OF HISTORICAL INTEREST

by Dean Millen

There exists a historical planting of avocados and citrus on the grounds of the Cal State Fullerton arboretum. This is of historical importance, not only to the avocado and citrus industry, but also because North Orange County has produced the original stock.

The Fuerte avocado, long a favorite of the consuming public, was brought here from Atlixco Mexico and propagated by the Altadena West Indian Gardens. The first commercial planting was in the Yorba Linda area in 1913 by a Mr. Whedon. From these trees, most of the future Fuerte plantings were budded.

The Hass variety, production wise, is the most prominent today. The original tree is located on West Road in La Habra Heights. It came from a chance seedling planted by Mr. Hass in 1923.

The Bacon variety was developed by Mr. Jim Bacon who planted many seeds from various sources. One chance seedling proved to be cold resistant by surviving the cold winter of 1948-49. This variety is now the third most important commercial variety today.

The Clinda Valencia arose from an orange tree planted in the back yard of Mr. Ollie Smith on the Santa Fe oil lease in Clinda.

Mr. Tom Hinde is credited with the development of the Placentia delight English Walnut. The original tree was located in Placentia.

North Orange County has produced the original Fuerte, Hass, and Bacon avocados, the Clinda Valencia orange, and the Placentia English walnut. The interesting part of all this is that all these trees grown throughout the world are genetically related to these original trees.

## ANNUAL BUSINESS MEETING

What: Election of 3 directors and other items as may come up from the floor.

When: Monday, January 27, 1986

Where: Brea Old City Hall  
401 So. Brea Blvd.

Time: 7:30 P.M.

The two year terms of directors Karl Fanning, Dean Millen, and Leo Fiantone are expiring.

The nominating committee has nominated the following: Karl Fanning, Leland (Tead) Kinsler, and Leo Fiantoni.

The general membership may also voice their feelings by nominating from the floor.

The By-laws allow directors to succeed themselves.

Dean Millen, who has been a very valuable and key person on the board has chosen not to run.

## PROGRAM SPEAKER:

Mrs. Louise Booth

< Her topic is:

## ORANGE COUNTY CENTENNIAL

Mrs. Booth is chairperson of the Orange County Historical Society centennial planning committee. Mrs. Booth is a resident of Villa Park, extremely interested in local history, and taught English for 21 years in Anaheim High School.

She will acquaint us with plans her committee is developing for the centennial in 1998.

o-o-o

## PICTURE HUNT

We are requesting you to please bring pictures you have that relate to interesting events in your life, since you have lived in Orange County, to the meeting Monday night. Some may be appropriate for use in a centennial publication.

Pictures illustrating a historic event, a family gathering, a pioneer family, a view that illustrates how something used to be done or is done today, a historic tree, a dedication, a club providing a special service are some suggestions for your search. They don't necessarily have to be old, and you can think of other possibilities so don't be timid. We are interested in knowing what pictures might be in Brea.

o-o-o

## SHORT COURSE IN CRANGE COUNTY HISTORY

What will be 100 years old in 1989?

If you have read this newsletter carefully, you can answer the question and be eligible for the grand prize drawing!

It was in the year 1898 that the people in this part of then Los Angeles County to break away and form their own county. It was not without some strong opposition from Los Angeles County officials that a bill creating Orange County passed the state legislature and was signed into law by the then Governor Waterman on March 11, 1898.

Santa Ana, being the most heavily populated won over the city of Orange in an election for the county seat.

This mini-history will prepare us for the big centennial year---1898.

o-c-o

## THANK YOU

Inez Fanning for editing the October newsletter and Miriam Bergman for typing the final copy. Also Miriam, for typing descriptive labels for a display on Brea and oil in our wall show case at Old City Hall.

Betty and Gil Straw for their super hospitality the night of the Christmas party. Your idea, Evelyn Bergman, of having each one there tell a bit about their early Christmas recollections was a fun experience.

Thank you; nominating committee:  
Peggy Detlof, Inez Fanning and Paul Whipp.

o-o-o

## MEMBERSHIP RENEWAL

It's that time again!

Join the Brea Historical Society now and keep your membership alive.

## ANNUAL DUES

\$ 5.00 Individual  
\$ 10.00 Family  
\$ 25.00 Supporting  
\$ 50.00 Sponsor  
\$ 100.00 Patron

Make check payable to the Brea Historical Society and bring to the January meeting or mail to treasurer Betty Straw  
401 E. Fir St.  
Brea, CA. 92621

o-c-o

This newsletter edited by Karl Fanning.

election. Assistant Supt. James Slaf - ford told the board that over 40 meetings are scheduled in the next two weeks geared to answer questions on the tax election.

The district is asking for a 58 - cent increase which will increase the assessed valuation to \$3.10 per \$100. The current tax rate is \$2.52.

Even though the tax rate is \$2.52, residents are receiving tax bills indicating the district's rate is now \$3.11.

According to Leonard MacKain, assistant superintendent, all districts have a legal tax rate and that Brea - Olinda's is \$2.52.

He said, however, that due to state laws other programs must

grams and community services which keep available the operating of school facilities for community groups using them. All of these programs are levied on the current tax rate by the state.

The Brea Citizens for Better Education will sponsor five "question - and - answer" periods for Brea residents with members of the school board in attendance.

The first meeting will be held Monday at Mariposa School in the cafeteria at 7:30 p.m.

Additional meetings, all at 7:30 p.m., will be held Oct. 29 at Brea - Olinda High auditorium and Olinda School cafeteria, Oct. 30 at Laurel School cafeteria and Oct. 31 at the junior high auditorium.

All PTA groups in the district will be sponsoring coffee socials to keep many residents informed on the tax override election also.

In other action the board heard a report from MacKain on the junior high and William E. Fanning elementary school building program.

MacKain said that the final inspection of the junior high was made and recommended to the board that they approve the new buildings.

He also said that the grading work at Fanning School is progressing according to schedule. The assistant superintendent said the district hopes construction on the school will be ready to begin in the first week of December.

Some diplomatic observers had cited the lull as part of pattern surrounding American efforts to get Hanoi to agree to mutually de-escalate the war.

Marine patrols late Tuesday night spotted about 400 Communists lurking near the Thuong Duc camp, which guards the western approaches to the allied bastion city of Da Nang, 360 miles above Saigon. The Reds were moving in three columns.

The leatherneck patrols signalled for artillery and air strikes.

The Marine ground troops pulled back. Military spokesmen said the Communist troops were virtually defenseless against the rain of bombs and artillery shells that slammed down on their positions.

The Reds were dressed in khakis, black pajamas or shorts and were carrying rifles, machineguns, packs and one 122mm rocket round.

The military spokesmen said the Communists were moving in different directions along a plateau within 15 miles of the camp. There was no indication where the Red troops were headed.

Tuesday Communist artillery shelled the American base at Dong Ha near the Demilitarized Zone and a nearby children's hospital, killing nine persons and wounding 28 others.

North Vietnamese gunners fired from positions a mile inside North Vietnam. They sent about 25 rounds of 130mm artillery into the Dong Ha base six miles south of the six-mile wide DMZ between North and South Vietnam. At least one round struck a dental clinic at the hospital, setting the building ablaze.

American planes retaliated against the North Vietnamese artillery. Spokesmen said they destroyed one of the 130mm cannon, triggering a secondary explosion on the northern edge of the buffer zone.



**PROPOS**  
John La  
engineer,  
Canyon

**United  
Hits 4  
Of Go**

**BREA**  
Find campaign  
per cent of it  
Ralph Thor  
chairman.

Thompson  
paign has rea  
goal of \$29,60  
most all of th  
the process  
return with  
sion nearing

Thompson  
city employe  
year increas  
\$327.

The residen  
changed to  
this year wi  
mailed to re  
The first  
amounted to  
sents half of  
ed last year  
passing met

Herman  
commended  
mittee for a  
campaign an  
mittee's plan  
early complet  
paign prior t  
5.

# Brea Boulevard Pepper Trees Given Reprieve

BREA — City planners gave the pepper trees along Brea Boulevard a reprieve Monday night, but not before two motions failed to pass with a third one passing after a dissenting member left the meeting.

Commission Chairman Richard Basse, in a turn - about maneuver, made a motion to the city council asking them to preserve the "well-known and well - standing pepper tree drive along N. Brea Boulevard.

Basse voted against a similar motion by Commissioner Carol Weddle earlier in the meeting.

The widening of Brea Boulevard, which will take place near Brea Junior High and Central Avenue, will do away with the Pepper trees in the area.

Weddle's motion came during the commission's study ses-

ion when he recommended to the council that they do everything in their power to save the trees.

John Sutton and Weddle voted for the motion, but Basse, who told the commission that the trees should be saved, and Ray Madsen did not. The motion was defeated as a result of a 2-2 vote.

Basse indicated that he wants the pepper trees to remain intact, but added that the motion did not "pin point it enough."

The motion was geared to saving as many trees as possible and Basse said he wants them all saved.

Madsen voted against the motion due to the cost of saving the trees along with the boulevard widening.

It would cost the city \$5,500

per tree to widen the boulevard and keep the trees in Brea.

Madsen then made a motion to go along with the city staff's recommendations to take out the trees and widen the boulevard. It died with lack of a second.

Later in the meeting, Basse came out with his motion to the city council and it passed 2-1 with Sutton voting against it and Madsen gone.

Madsen left the meeting due to personal matters.

One of the main arguments between the commission about the trees was that a professional opinion from a tree expert said that the trees along Brea Boulevard would not live much longer than 10 years.

Basse retaliated the opinion and said the trees should go beyond 10 years easily.

## RESOLUTION ADOPTED BY BOARD

# JC Trustees Oppose Prop.

By RICK ROBINS

Star-Progress Staff Writer  
FULLERTON — As anticipated, the trustees of the North Orange County Junior College District went on record Tuesday night in opposition to Proposition Nine on the Nov. 5 ballot.

A resolution to this effect

The district may by the request of their county counsels and many by their own initiative, have chosen to oppose the bill because they feel it will completely stifle the sale of school bonds for from to seven years. Bonds have been the only method by

of a junior college site in the city.

The vote on the matter was four - to - three in favor, with trustee Walter Smith leading the opposition.

The memorandum was drafted by one written by Smith said he

and indicated that the company "must not have sufficient pride in their work."

The cash registers, which were approved for purchase on a three - to - two vote (with one abstention), are used in the Fullerton Junior College bookstore and were purchased from

deferred co  
solution into  
the financir  
share of th  
projects in  
the Junior C  
Act.

Early du  
half dozen

**Planners**  
 BREA — The new zoning code may be in its second reading before the city council, but it is still facing the planning commission for revisions.

The city council has given its approval to the code and at the same time asked that the commission re-study certain areas of the code.

The council specifically pointed out five sections of the code that they wanted the commission to give further consideration to. They are:

1. Re-study the signing regulations of the city.
2. Go over the RH-residential hillside section.
3. Study the zoning of Imperial Highway near Laurel School and Pine Street.
4. The council felt that the accessory uses in CP zone should be allowed to occupy at least 25 per cent rather than 10 per cent of the building as it now reads.
5. Re-study the parking or storage of 3/4 ton trucks on city streets and develop a policy statement.

Councilman Thomas Speer, in attendance at Monday night's commission meeting, said that he did not like the signing section of the code.

"I don't like the whole section," he said. "It's too restrictive."

The commission will go over the five considerations of the council at a later meeting.

SAIGON (UPI)—U.S. infantrymen and paratroop reinforcements battled counterattacking North Vietnamese veterans into a second day today on Saigon's northern doorstep and reported 147 Communists killed.

U.S. spokesmen said eight Americans were dead and 13 wounded in the battle around Trang Bang, 25 miles northwest of the capital. It was one of the fiercest fights in recent weeks close to Saigon.

Battlefield reports said 250 infantrymen from the U.S. 25th division ran into the dug-in communists Monday while plying the flatland paddy country around Trang Bang, a favorite

guerrilla bivouac on the way to Cambodia.

Outnumbered and temporarily outgunned, the Americans called for helicopter-riding paratroop reinforcements and battered the Reds with divebombers and artillery. The Communists withdrew at nightfall Monday but counterattacked at midnight, the announcement said.

Intelligence reports identified the Reds as members of North Vietnam's 101st regiment, last reported several miles to the south of Trang Bang and west of Saigon.

In other developments announced by U.S. headquarters: American B52 bombers today

went over North Vietnam for the first time this month and dropped more than 250 tons of bombs onto truck lots, guns and antiaircraft sites, from the border Demilitarized Zone to seven miles above it.

—North Vietnamese shore batteries scored a direct hit on the U.S. Navy destroyer Furuse, wounding three seamen. At least 24 big rounds splashed around the Furuse and another ship bombarding the Communist shoreline. They fled at full speed.

—Government headquarters said 1,654 Communists were killed in Vietnam battle last week, a sharp decline from the 2,868 slain the previous week. South Vietnamese losses were put at 228 killed and 1,065 wounded.

—Two hand grenades either accidentally dropped or thrown from an unidentified U.S. aircraft fell into a group of Vietnamese fishermen near Da Nang today, killing one and wounding 13. American officials said they would investigate the incident.

—U.S. Marines and South Vietnamese infantrymen pushing toward the threatened U.S. Green Beret camp at Thuong Duc killed 34 Communists Monday. The camp itself, freed from a nine-day North Vietnamese siege Monday, reported a light Red mortar attack.

—American Marines who reoccupied their old Khe Sanh combat base over the weekend found the bodies Monday of 33 Communists apparently slain south of the base by allied artillery fire. There was no report of fighting in the Marine operation to clear lingering North Vietnamese forces away from Khe Sanh.

## No Action Taken On Pepper Trees

BREA — The planning commission referred the discussion on the Brea Boulevard widening and the possibility of doing away with the city's Pepper trees to the recreation commission Monday night.

At the same time, the commission would not give its approval to the destruction of the trees without a professional opinion from an expert on trees.

The widening of Brea Boulevard, which will take place near Brea Junior High and Central Avenue will do away with the Pepper trees in the area.

Public Works Director Harold Wilson said the only trees that will be retained are those south of Peppertree Drive and that the others will go.

He said the condition of the trees is very poor and that some may last an additional 25 years and the others will not.

"Some of the trees are in pretty bad shape," he said.

Wilson said that as soon as the Orange Freeway comes through Brea, Brea Boulevard would be owned by the city and if the trees were saved they would be responsible for the maintenance.

He said that the widening is expected to get under way possibly by next Spring.

In any event, the matter of the Pepper trees has been referred to the recreation commission and the commission has asked for a professional opinion on the condition of the trees.

### SPECIAL EVENTS PLANNED IN BREA, LA HABRA

# Fire Prevention Week Begins

LA HABRA — The period between Oct. 6 and Oct. 14 has been designated as Fire Prevention Week with the fire departments in both Brea and La Habra planning special events in correlation with the observance.

While no open house will be held at the Brea Fire Station, Chief Kenneth Staggs told the Star-Progress that his department is working with all the schools in the city.

Saturday for inspection and which will burn Sunday when the fire department presents a special demonstration.

The address of the building has not yet been released.

In La Habra, a special series of fire drills under the supervision of the La Habra City Fire Dept., are being held through the week.

Drills will be held Wednesday and Thursday at the La Habra City Fire Station.

The Junior Fire Marshal program permits students to become honorary junior firemen after completing a specially prescribed course of fire prevention instruction.

It is hoped by the department that the program will aid students in locating possible fire hazards in each of their own homes.

The posters created by the students have relevance to fire prevention and will be judged by the local fire department.

stration set for 2 p.m. Refreshments will be served from 4 a.m. to 4 p.m.

While there is a contribution of fire prevention to those in the fire station in concentrated

service at its meeting. The matter came before the city council at its meeting Monday night when Garth Lipsky, city administrator, reported the Brea Emergency Service Committee was holding a series of meetings and working on a final report.

## Revaluation Annually To Start By '68

An annual revaluation of all residential property in Orange County will be put in operation by 1968, County Assessor Andrew Hinshaw told a meeting of the La Habra Democratic Club Thursday.

Eighteen people attended the meeting to hear Hinshaw discuss changes in assessment procedure and recent state legislation which will affect the duties of county assessors.

He said that a computer would be employed to determine annual changes in property values.

"We will be using 127 variable factors in arriving at the assessed valuation of property," Hinshaw declared. "Orange will be the first county in the state to have such a system."

Recently enacted state legislation will require similar procedures in other counties within a few years, he added.

Hinshaw also discussed forthcoming changes designed to provide a uniform 25 per cent assessment on all types of property within the next several years. He pointed out that the state will require such uniformity by 1971.

During the meeting, La Habra Democratic Club President George Shmoutey said there are attempts being made to form a Democrats for Reagan club in La Habra. "If you know of anyone involved in this, try to put pressure on them to keep them from doing it," he told the club.

## Fire Damage For June Told

Fire damage in Brea during June totaled \$1,376, according to fire department records.

A total of 17 fires were recorded for the month, compared with five in June, 1965,

and each amounting to \$75. The service would be based on how well it would meet the standards.

The service receiving the highest rating would be called in an emergency. If a unit were not available, a lower rated service that had a unit available would be called.

The committee has expressed the opinion that this method would be superior to a rotation system where each service was called on a rotating basis regardless of whether they have met the standards or not.

Serving on the committee are Councilman William Hamilton, and Sam Magnus, Chief of Police Richard O. Baugh, Fire Chief Kenneth L. Staggs and City Administrator Lipsky.

## Transportation Commission Meets Today

A projected Los Angeles Region Transportation Study will be discussed today at a meeting of the North Orange County Transportation Commission.

Public Works Director Robert Warnich will attend the meeting as representative from Brea. The city council has already given tentative approval to Brea's participation, if the Transportation Commission decides to go ahead with the project.

North Orange County's participation in the study would involve projecting traffic flow along area highways & freeways through the year 1985. Much of the work involved in the study would be done with the help of an electronic computer.

Warnich estimates that the project would take about six months to complete.

## Girl Hospitalized

A 17-year-old Fullerton girl was reported in good condition at St. Jude Hospital today following a one-car accident on Carbon Canyon Road. The girl was driving the car at the time of the accident.

The 17-year-old senior will live with the Ronald Jensen family, 1029 Eadington Dr. Rick Jensen, a student at Brea-Olinda, will be president of the junior class this fall.

Zell's parents are Mr. and Mrs. Arnold Tunell. His father operates a travel agency and his mother is a tradeswoman.

Lars-Olof plans to study American literature and history, and learn more English, during his year of school here.

He will leave Sweden aboard the ship "Arcadia," arriving in Montreal, Quebec, Aug. 28. After spending a few days in Ann Arbor, Mich., headquarters of "Youth for Understanding," he will arrive in Brea about Sept. 1. He will begin school with the other students Sept. 12.

## The Editor Letters To

This is my 26th wedding anniversary, not that that is anything important to write to a newspaper about, but I feel that I would like to do something to insure a 100th anniversary, not mine. But for those beautiful trees that line Brea Boulevard from the mouth of the Brea Canyon to the junior high school property.

In 1938, I had a chance to visit for a whole summer in California. As I traveled from place to place seeing the country side, my favorite place was Brea Canyon, because of the lovely trees.

Little did I realize that I would be living here, or fighting to save those same lovely trees.

I believe in progress, but I also believe in preserving that which is lovely and worth saving. A highway route can always be designed around anything, if people care enough. Highway engineers and planners have enough knowledge to do re-routing if necessary, let them put this knowledge to work to save the lovely lines of trees that couldn't be duplicated for 75 years.

Sincerely yours,  
Mrs. Dale N. Wells  
850 Steele Dr.

## Myrtle Johnson Laid To Rest In Oklahoma

Funeral services for Mr. Myrtle E. Johnson, 134 Walnut Ave. were held Wednesday at 5:30 p.m. at New Brea Mortuary.

Officiating was Rev. J. A. Chicasha, Okla.

Mrs. Johnson is survived sons, Myrtle Dodd, Paris and Clyde Anderson, Oklahoma. Three daughters, Dolle Caway, Brea, Sybil Weiss, Mesa, and Betty Jo Hill, Texas.

She is also survived by 10 brothers, 18 grandchildren, and 28 great grandchildren.

## Brea Youths Given Honors

There were 194 students named to the Dean's List at Claremont Men's College last semester, with 12 students receiving all A's. Dean Harold Clelland announced this week the students who received A's were, freshmen: Wayne Hawley, Terry O'Rourke; sophomores: Larry Cross, Harold Lowe, Javad Khalizadeh - Saad, Joseph Malkin and Jar Roberts; juniors: Alan Bal Michael, Helfer, Duane Quarles, Richard Schoenfeldt and Peter Schoettle.

Receiving "B" average better were John D. McGuire, a senior last semester, son of Mr. and Mrs. Jack McGuire, 537 Palm Drive Brea, and I. K. Roudy, a sophomore last semester, son of Mr. and Mrs. Harlan L. Roudy, 414 E. St., Brea.

There is only one R so well located

NO LIMIT • NO RESERVE  
**PUBLIC AUCTION**  
By Order of Bank

Sale on Site at  
SWAN LAKE MOBILE HOME PARK  
5800 ADAMS BLVD.  
MIRA LOMA, CALIF.

TUESDAY  
**JULY 26**  
3:00 P.M.

southern California new poles look a greater load

(PRESS PHOTO)

## Illots' Here

Bride of Brea and Cooper of Ontario, who dated by Briggs, sued Briggs, and it was for Dennis Carpenter meeting of the candle-restore order. After it appeared that diff had been patched up, for the duration of the 1—but the Democrats believe the breach was ly healed.

McBride sits in high of the G.O.P. and it is likely that he would do in the general election some of McBride's supporters said to be unhappy at their successful 35th District candidate. A total of 17 fires were recorded for the month, compared with five in June, 1965,

# At Brea Polls Tomorrow

## Both Parties Campaigning To the Wire

A record turnout of voters is expected at the polls in Brea tomorrow when an assemblyman, state senator, United States Senator and Congressman, as well as a President are chosen.

Both Democrats and Republicans are campaigning right down to the wire to get the vote tomorrow and both are setting up baby sitting and transportation services. Both sides are confident of victory. There are 3,078 registered Republicans and 2,524 registered Democrats in Brea. Those without party designations bring the total to 5,731.

Most of the candidates, with the exception of those seeking national office, have been in Brea and all of them have been in the general area during the campaign.

The candidates have appeared at local Republican and Democratic headquarters on Brea Blvd., at coffees and at meetings in Brea homes, as well as before civic groups.

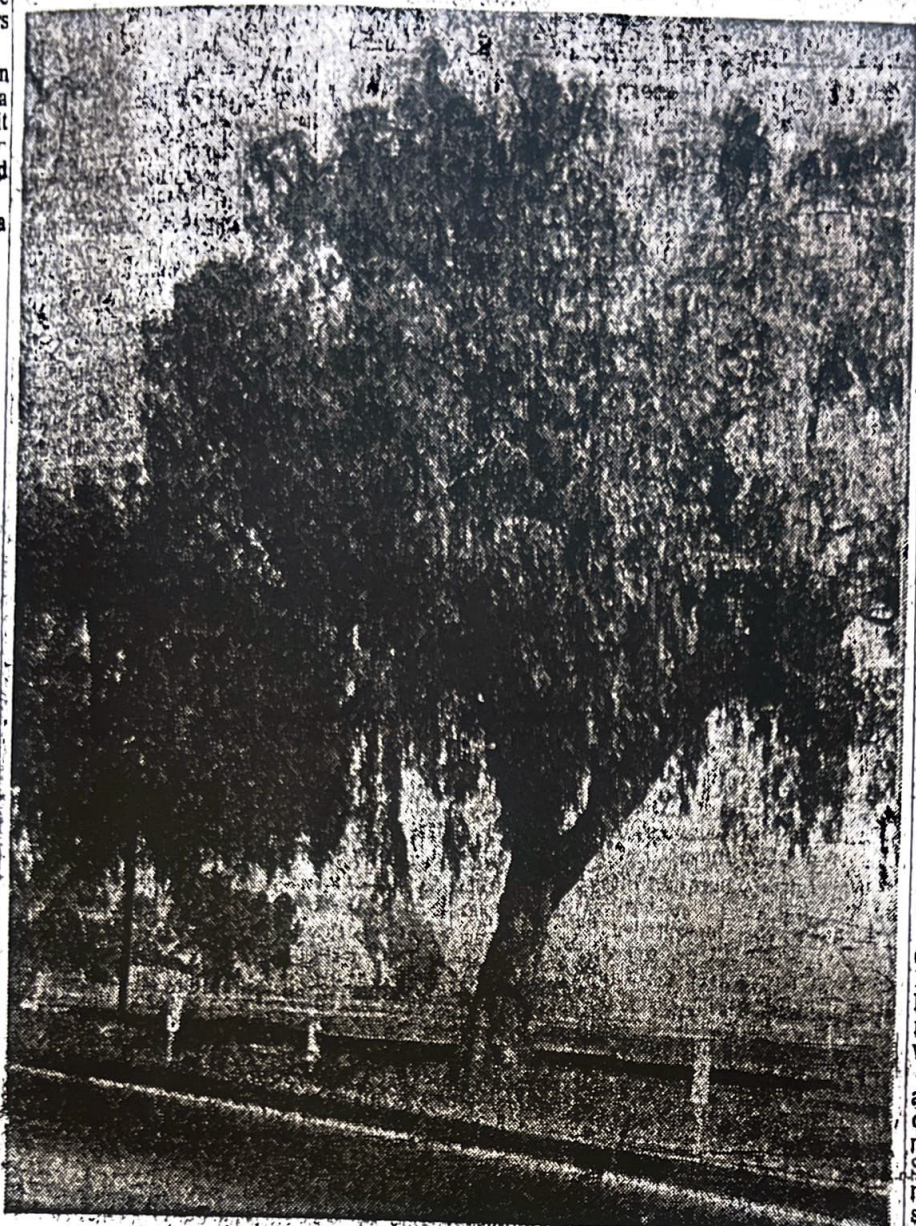
Republican John G. Schmitz, a college instructor, and Democratic Robert Battin, an attorney, who are running for the State Senatorship spoke at a meeting in the junior high school which was arranged by the Teachers Association of Brea.

Assemblyman Robert E. Badham and Ray Johnson, his

(Turn to Page A-2, Col. 2)

## Battin Nabbed In Santa Ana In Poster Row

Robert Battin, Democratic candidate for state senator, was booked into Orange County Jail Sunday night on a charge of assault with a deadly weapon, following a citizen's arrest by Frank LaMagna, police reported.



**WANTS TREES SAVED** — Mrs. Anabel Nash of Brea has been trying to alert the local citizenry to the possibility of the Eucalyptus trees along Central Ave. and the Pepperwood trees along Brea Blvd. being destroyed as the streets are widened and developed. She asks that all efforts be made to preserve as many of these trees as possible because of their great beauty and the important function which they serve.

(STAR-PROGRESS PHOTO)

## Stages One-Woman Campaign Save Pepperwoods, Eucalyptus

Mrs. Anabel Nash of 424 S. Madrona has been conducting practically a one-woman campaign to save Brea's Eucalyptus trees along Central Ave. and the Pepperwood trees along

on at least one side of the street. At the time of the hearings concerning the Heritage developments, it was suggested that at

thing couldn't be done to save the Eucalyptus trees along Central Ave. Lipsky replied that the trees are on private property and the city has no con-

... went off with a ... but without much ...  
 ... and eggs were ...  
 ... eapons of the juve- ...  
 ... of makers. ...  
 ... te boy, and a Ful- ...  
 ... were among those ...  
 ... police headquarters ...  
 ... d. ...  
 ... halloween celebration ...  
 ... nto Sunday and a ...  
 ... Pine St., was hit ...  
 ... ne window broken ...  
 ... re window smeared ...  
 ... t hit and broke a ...  
 ... S. Laurel.

## Pushing Plan for Building

... ans join others on ...  
 ... Action Committee ...  
 ... to have funds allo- ...  
 ... construction start- ...  
 ... range Freeway in ...  
 ... r, the city council ...  
 ... local streets con- ...  
 ... gram.

... vment to the con- ...  
 ... are working on ...  
 ... St. "cut through" ...  
 ... St. to Puente St. ...  
 ... rized by the city ...  
 ... t. The road, which ...  
 ... ompletion in Janu- ...  
 ... will connect Deo- ...  
 ... Ocean Ave., pro- ...  
 ... ct route for Brea ...  
 ... yed outside of the ...  
 ... sers from outside ...  
 ... re employed here ...  
 ... ough" is expected ...  
 ... th Central Ave. ...  
 ... Hwy., which are ...  
 ... y east-west traf- ...  
 ... labra is now im- ...  
 ... Ave. and Brea ...  
 ... make improve ...  
 ... its limits.

... al Ave. ...  
 ... is being extend- ...  
 ... en south by Heri- ...  
 ... on Co. to open ...  
 ... ndreds of homes ...  
 ... onstruction with- ...  
 ... nths. The exten- ...  
 ... east from Brea ...  
 ... to a point near ...  
 ... and will prob- ...  
 ... ed to meet State

... ncil at its latest ...  
 ... ved of participa- ...  
 ... on and the coun- ...  
 ... ed extension of ...  
 ... om Rolling Hills ...  
 ... l Hwy. ...  
 ... t of the job is ...  
 ... e A-2, Col. 4)

**WANTS TREES SAVED** Mrs. Anabel Nash of Brea has been trying to alert the local citizenry to the possibility of the Eucalyptus trees along Central Ave. and the Pepperwood trees along Brea Blvd. being

destroyed as the streets are widened and developed. She asks that all efforts be made to preserve as many of these trees as possible because of their great beauty and the important function which they serve. (STAR-PROGRESS PHOTO)

## Stages One-Woman Campaign Save Pepperwoods, Eucalyptus

Mrs. Anabel Nash of 424 S. Madrona has been conducting practically a one-woman campaign to save Brea's Eucalyptus trees along Central Ave. and the Pepperwood trees along Brea Blvd. She now urges all interested local citizens to join her in an effort to preserve the trees which may be doomed any day as the streets are developed and widened.

"I see no reason why they should remove any of the Pepperwood trees," she says. "At the very least, they could leave one lane of the trees if they widen the road. The trees would be a good dividing line, especially since they are already painting some islands green to serve as a marker."

### Wind Breaks

As for the Eucalyptus trees along Central Ave., Mrs. Nash points out their function as "wind breaks." If they go, then the surrounding homes will have no protection in the event of wind storms, she says.

Heritage Construction Co. which is now developing property along N. Brea Blvd., has told city councilmen and planners that they would preserve the Pepperwood trees as long as they can. They also said they hoped to retain the trees

on at least one side of the street.

At the time of the hearings concerning the Heritage developments, it was suggested that at least one row of the trees could be saved by putting them in an island with the highway on each side. The Pepperwoods date back to 1916.

Last summer Mrs. Nash wrote to City Administrator Garth Lipsky, asking if some-

thing couldn't be done to save the Eucalyptus trees along Central Ave. Lipsky replied that the trees are on private property and the city has no control over them. He said that as Central is developed and widened, the trees will have to come out, but that a parkway is planned along Central Ave.

In discussing the plight of the Pepperwood trees along Brea Blvd., Mrs. Nash declared that "it is disgraceful the way the city has been caring for them." She asked that these trees also be saved.

Lipsky pointed out that the trees are not under the city's jurisdiction. He said that Brea Blvd. is a state highway and the maintenance of the trees is the responsibility of the State Division of Highways.

### May Plants Trees

He also revealed that the Heritage Construction Co., might plant trees behind the Pepperwood trees so that when the

## Brea Tax Rate Low in North Tier of County

Brea's \$342 is the sixth lowest tax rate of 24 cities in Orange County - the lowest in the northern section - according to figures released by County Auditor - Controller Victor Heim Westminster property owners will pay the most and Laguna Beach property owners the least tax, according to Heim's figures.

Heim says his calculations are based upon the total tax charged for an assessed valuation of \$4,000. This would be equal to a residence with a total market value of about \$16,000.

In arriving at his figures, Heim took the code area in each city that had the greatest assessed valuation and this was used in tabulating the tax in that city.

### In Code Areas

He explained that tax bills vary since each city is divided into numerous code areas, some taxes and others which escape those taxes.

By taking the code area in each city that has the greatest assessed valuation, Heim said, he believes the best representation of taxes in that city can be obtained.

(Turn to Page A-2, Col. 5)

## Sunshine For Election Day

Mostly sunny weather will prevail for Election Day on Tuesday, the weatherman has assured. And your saunter to the polls will be in slightly warmer climate, he says. Gustly northerly winds below the canyons can be expected.

A high between 70 and 78 is predicted for Tuesday while tonight's low is expected to drop between 40 and 50.

High temperature, Sunday was 65 during a heavy overcast that brought none of expected precipitation in the area.

school which was arranged by the Teachers Association of Brea. Assemblyman Robert E. Bachman and Ray Johnson, his

## Battin Nabbed In Santa Ana In Poster Row

Robert Battin, Democratic candidate for state senator, was booked into Orange County Jail Sunday night on a charge of assault with a deadly weapon, following a citizen's arrest by Frank LaMagna, police reported.

Police said LaMagna of Santa Ana, told them Battin, also of Santa Ana, tried to run him down with his automobile Sunday night when he attempted to stop the candidate from defacing political posters of his rival, Republican John Schmitz.

Authorities said Battin was released from jail without bail about an hour after he was booked. His arraignment was scheduled for sometime after Tuesday's election.

LaMagna was reported to be a member of a 1,000-man Republican "Patrol Committee" trying to protect Republican campaign signs from alleged vandalism in Orange County.

Police said Battin made no statement. A spokesman for Battin, however, said the candidate claimed it was a smear attempt.

## Life's Little Dramas

Life's little dramas continue of the kids said, "we are just their sometimes happy, sometimes finding out if people want to buy." times sad run.

The telephone rang at midnight and a sleepy-eyed Brea crawled out of bed and raced across the hall to answer it.

As he reached the telephone the ringing stopped, but he had no more than put his head on the pillow when it rang again.

This time the sleepy Brea ran a little faster to reach the phone before the ringing stopped.

It was his neighbor to tell him that he had forgotten to turn out the porch light.

### Christmas Sales

Two youngsters knocked at the door and asked the housewife who responded to their knock if she wanted to "buy somethin' for Christmas."

"Well, I guess so," said the housewife. "What are you sellin'?"

"We haven't decided yet," one

W A spry little terrier bounded down Cherry St. with a dolly in her mouth. After her raced a little black poodle and a couple of kids.

"Did the dog take your dolly?" asked a solicitous neighbor of one of the little girls chasing the dogs.

"Oh, no," said the little girl. "The dog belongs to Peanuts (the terrier) but the other doggies was going to take it away from her."

### Hitch-hiking

A car stopped for a young ride thumber near Puente St. and the driver asked the youngster where he was going.

"I'm going to Corona," the kid said, "but if you can give me a lift to Yorba Linda, I'm sure someone will take me to the Riverside Freeway and than I can get a ride to Corona."

asked to select a seven-man board from the candidates and decide on the merging of the Fullerton Junior College and "Interim" North Orange County Junior College District.

Each candidate will be assigned to one of four trustee areas, but he will be elected by the more than 160,000 voters in the 150-square mile area, Spencer is currently on the new North Orange JC board. Candidates are:

District 1 (Anahelm) — Kenneth H. Clifford, Melyin D. Hilgenfeld, Bob King, Felix S. Le Marinel, Kenneth R. Middaugh, Harold H. Roach and Pasquale Scalera. (Two trustees).

District 2 (Cypress - Los Alamitos, Buena Park) — Robert N. Hathaway, Benjamin Levin, Richard D. Noble, Tim G. Pool and Stanley E. Porter. (One trustee).

District 3 (Placentia - Yorba Linda - Brea - La Habra) — Richard W. Bassem Arthur L. Dickenson, Peter L. Gabbert, Robert C. Hawley, Francis N. Laird, Hal Thomas, Kenneth W. Spencer, Herbert M. Warren, and Sal Zavala. (Two trustees).

District 4 (Fullerton - La Habra) — Howard C. Hall, Robert J. Huntley, Joe W. Johnson, Raymond A. Mehahn Jr., John B. Palmer, James R. Ratcliffe, Frank M. Stewart, Forrest C. Warner, MD and Beverly A. Winsler.

Frank Smith  
a double house  
napel until the  
eted.  
RESS PHOTO)

# Eighth th 732

to 15,485 and Orange Fullerton had 4,416, Beach was 894 and n Beach 1,687. Seal d 669.

Brea had reached re than doubling its e Anaheim had grown Santa Ana had spurt- 32. Orange was 8,066, ton 10,860, Hunting- 3,690, Newport Beach Seal Beach 1,158. La t year, five years aft- orporation, was 2,273.

Brea had 2,567, only than in 1920, while had grown to 11,031, ore than in 1930. san- neanwhile had added a population of 31, -ge had dropped to 7, -ss of 165. Fullerton, lost and then had a 10,442, a drop of 418. n Beach was at 3,788, f 48. Seal Beach was 553. La Habra, with s stall smaller than

3,208 In 1950

ad 3,208 in 1950 and 1960. In 1950 Santa Ana o 45,533, and by 1960 110. Anaheim in 1950 and by 1960 had 104, -ng Santa Ana. Orange 10,027 in 1950 to 26, -60. By 1950 Hunting- had 5,237 and in 1960 2, while Newport d 12,220 in 1950 and 1960. Seal Beach, grew from 3,553 to Habra passed Brea in 4,961 and shot up to 1960.

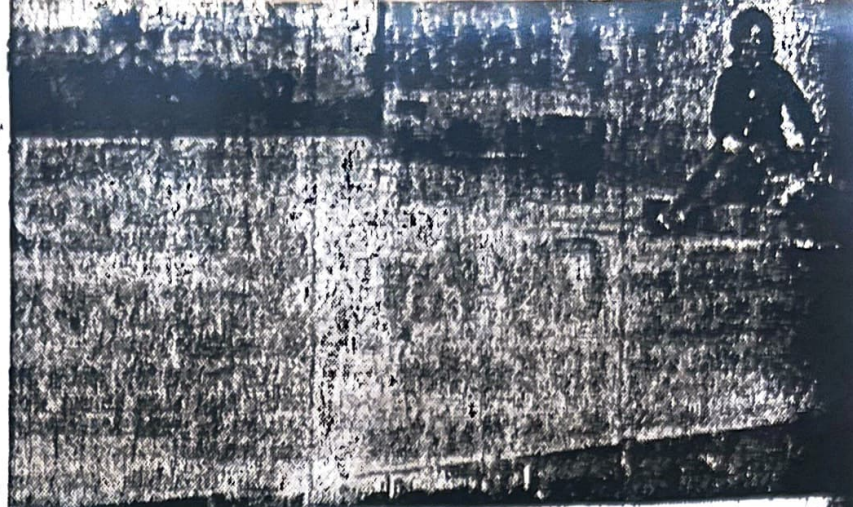
## ... Roads

(Continued from Page A-1)

estimated at \$215,000 with Brea's share put at \$50,000. Bastanchury Rd. is now being extended from Brea Blvd. to State College Blvd. Outside the city, it is not costing the city anything.

While it is not on the agenda, the matter of omission of the extension of Puente St. on its road map and the possible withholding of gas tax funds could come up at tonight's meeting. The city council at its last meeting received a letter from the County Road Commission advising the city that the master road map had not been signed by the city officials because the Puente St. extension southward had been omitted. The letter, signed by Asst. Road Commissioner McConville, said the omission of the Puente St. extension southerly from Las Palmas Dr. "Causes a serious disruption in a vital north - south link in the county's plan."

City administrator Garth Lipsky said he is hopeful that the state highway division will accept the map as is and that there will be no holdup in the city's share of the gas tax funds amounting to some \$80,000, but there is no assurance of this.



NEW PATIO — For outdoor activity is being put in by members of Youth Club. Here they will play shuffle-

board and other games and refreshments.  
STAR-PROGRESS PHO

## ... Tax Rate

(Continued from Page A-1)

About what residents of that city can expect to pay in taxes if they have a \$16,000 home, is the way Helm explains the figures given the accompanying table.

Among the five Northern Orange County cities of Brea, Buena Park, Fullerton, La Habra and Placentia, residents of Brea will have the lowest tax bill of their \$16,000 home - a tab of about \$342.21. Those in Buena Park will pay the highest tax of cities in the northern part of the county, an estimated \$394.91 on a \$16,000 home,

19th From Top

Of the 24 cities in the county, Buena Park ranks sixth highest on taxes; La Habra is eighth; Placentia is 11th; Fullerton is 14th; and Brea is 19th.

	Rate	School	County	City	Special Districts	Rate
Anahelm	8.7618	\$187.85	68.80	\$44.00	\$48.82	\$350.47
Brea	8.5554	158.08	68.80	62.80	52.53	342.21
Buena Park	9.8729	201.61	68.80	62.00	72.50	394.91
Costa Mesa	9.6911	189.97	68.80	40.00	68.47	385.24
Cypress	9.8407	209.44	71.59	40.00	73.59	393.62
Dairyland	9.8639	201.61	71.59	39.20	86.15	398.55
Fountain Valley	10.4389	251.61	71.59	40.00	84.58	417.19
Fullerton	9.2090	192.48	68.80	62.80	44.33	368.36
Garden Grove	9.0833	180.88	68.80	40.00	72.81	362.49
Huntington Beach	8.1894	154.51	68.80	53.20	51.06	327.57
La Habra	9.4406	215.47	68.80	62.00	39.35	385.62
Laguna Beach	9.9594	104.03	68.80	60.40	45.14	278.37
Los Alamitos	9.5949	205.46	71.59	40.00	66.74	383.79
Newport Beach	7.4887	145.89	68.80	47.20	37.65	299.54
Orange	9.2575	193.10	68.80	60.40	52.00	374.80
Placentia	9.5511	189.81	68.80	51.20	72.28	382.04
San Clemente	9.8781	185.53	68.80	68.00	74.55	374.88
San J. Capistrano	9.9545	151.82	71.59	40.00	135.97	398.18
Santa Ana	9.0577	151.19	68.80	58.80	48.51	322.80
Seal Beach	9.3240	169.97	68.80	55.40	38.79	332.96
Stanton	10.0735	195.78	68.80	40.00	98.35	403.94
Tustin	9.1199	188.78	68.80	40.00	67.21	364.79
Villa Park	9.3081	198.09	71.59	40.00	59.44	364.12
Westminster	10.6159	187.68	68.80	40.00	128.30	426.63

## ... Trees

(Continued from Page A-1)

trees were removed, there would be a row of established trees there to take their place.

However, he stated that he doubts the replacements will be Pepperwood trees, since the Park Commission has a listing of trees said to be more suitable for planting along streets.

In her letter to the council, Mrs. Nash had said:

"Replacement is a nonsensical statement — a five-year-old tree to replace 50 years of growth.

"Why can't we keep them? These belong to the town. Who has a right to say they shall be cut down? It shouldn't even be the decision of the city council — these trees belong to the taxpayers."

## Orville Wright Funeral Service

Orville L. Wright, 41 Peach St., died Sunday at the Jude Hospital. A native of Kansas City, Mr. Wright had lived in Brea for six and a half years. He was construction superintendent for J. B. Wright Association in Orange County.

He was a member of the Randolph Ave. Baptist Church, where he is survived by his widow, Emma, a son, Randy, and a daughter, Dana, all of Brea, and a sister, Mrs. Betty Wright, son of Independence, Mo., brother, S. M. Wright, of Conns Rapids, Wis.

Services will be tomorrow, 2:30 p.m. at Randolph Baptist Church with Rev. W. Wilcoxon officiating. Burial will be in Memory Garden. Coleman Mortuary in charge.

## Driver Nabbed

Wayne Richard Babcock was arrested at Brea Blvd. and Central Ave. by Sgt. Richardson yesterday on charge of suspicion of driving while under the influence of alcohol. He was later released on bail for arraignment at the Fullerton Court.

ANDY JON  
Let Andy assist you

138 W. CENTRAL  
BREA - J.A.

# CARPET TO WALL SALE

OVER 100 ROLLS OF CARPET TO CHOOSE FROM

595 sq. ft. 6 COLORS Tweeds

Completely 695 sq. ft.

# Studebaker Put Into New Job



## Selectee As Water Dept. Head Baker Nominated To Parks Board

A. W. Studebaker is set out as city administrator to become manager of the water department as his successor can be named. This will probably be in February or March, when it is expected that the newly created position of director of water works will be filled.

The city council at its meeting Monday night authorized a three year contract with Studebaker guaranteeing him all the privileges of other employees. He will receive \$10,800 a year.

"He is going to take a position in an area in which he has a great deal of experience and I am sure he is going to do a good job," Mayor Lloyd Reese commented after the council had authorized the City Clerk Carl Young to sign the contract. The motion, introduced by Councilman Raymond and seconded by Councilman Carl Harvey was passed 4 to 1 vote. The negative vote was cast by Councilman (Please Turn To Page 11) See: "Studebaker"

**PERPETUITY FOR PEPPERWOODS?** Brea's City Council will have a walk built behind trees, and hold off street widening as long as it can.

Pepperwoods were planted before Brea's incorporation as a city in 1917. STAR-PROGRESS PHOTO

## Sound Experts Are Called to Local Plant

Acoustical engineers have been called in to find a way of eliminating noise at the Miller Co. plant here, Earl Bright, general manager, told the city council at its meeting Monday night. The council chamber was crowded with residents of the vicinity of the plant as Bright outlined the remedial measures that had been taken to lessen noise and said that every effort possible would be done as quickly as possible to solve the problem. Bright's statement followed

# Pepperwoods On N. Brea Blvd. Will Stay Until State Axe Falls

The pepperwood trees on N. Brea Blvd. will stay at least for a while.

The Brea City Council at their meeting Monday night decided to accept dedication of the street, have a sidewalk built behind the trees and hold off improvements and widening of the street to 100 feet until the state highway department forces the issue. Some who attended the meeting doubted if this would ever

be described as a "beautiful city landmark".

**Wants to See Trees Out**  
"I want to see the trees out!" said Councilman Thomas O. Speer, but when it came to voting he went along with the other councilmen on Councilman Harvey's proposal to leave the trees in and have a walk built behind them. The developers will also plant a row of new young trees behind the old pepperwoods on the edge of the dedicated area so that if the original

street be dedicated, but that improvement be held up until it is absolutely necessary to widen the north end of Brea Blvd.

**Suggests Islands**  
He said that he would be favorable to creating islands for the trees on both sides of the street, but he does not want to see the trees on either side of the street removed. The trees under discussion on Monday are on the west side of the street. "Trees not only provide a beautiful entrance to our city", but they are natural



# Plant

ical engineers have led in to find a way of reducing noise at the Co. plant here, Earl general manager, told council at its meeting night. Council chamber was with residents of the of the plant as Bright remedial measures been taken to lesson and said that every- ssible would be done ly as possible to solve lem.

s statement followed by Councilman Thom- eer and Sam Magnus visit to the Mueller it and a conference npany officials. They t they were satisfied company was acting faith and that steps taken to reduce the el, but that there was rective steps to be nd they intended to the necessary remed- in the neighborhood. Turn To Page A-2) See: "Noise"

## Police Find Missing Utah Kids

missing juveniles from ge, Utah, were picked he Brea police last Their parents were

# Dramas

, replied the other got a girl cousin who ie plenty trouble". "does she do?" "She puts jelly beans in my whenever she comes to

## Road Adventure

bound for Brea ran as on Imperial Hwy. Carolina.

worry", the diver as- s wife." I have a ren- of gas in the truck". that he hopped out ned the trunk. The re- s can was there, but mpty.

I'll have to hike to rest gas station", the d his wife as he start- the road with the gas

out an hour he re- a long hike?" his wife

, and this can was avy for a while, but I got used to it as I rer the car".

that he looked down can and found that it

# Will Stay Until State Axe Falls

The pepperwood trees on N. Brea Blvd. will stay at least for a while.

The Brea City Council at their meeting Monday night decided to accept dedication of the street, have a sidewalk built behind the trees and hold off improvements and widening of the street to 100 feet until the stat highway department forces the issue. Some who attended the meet- ing doubted if this would ever be necessary.

The matter of street widen- ing and the trees came up when Heritage Construction Co., developers of tracts on both sides of N. Brea Blvd. objected to conditions imposed by the city planning com- mission. The developers want to save the trees, which they

## Choking Child Brought Into Police Office

A La Mirada woman who had been in Brea looking at houses rushed into police headquarters yesterday with a baby in her arms, and told Police Matron Ann Penrod the child was choking.

Mrs. Penrod hurried the child to the fire department rescue unit and Dr. W. S. Newlin was called. He found a piece of crayon and plastic paper caught in the throat of the child Marcie Levenson, one year old.

After emergency treatment the child's mother, Mrs. Keith Levenson, took the child to the family's physician in Whittier.

## Knowland County Speaker Nov. 13

William F. Knowland, former U. S. Senator of California, presents his views on "Business and the New Frontier" in the third lecture of the Executive Profile series, sponsored by the University of California Extension, on Wednesday, Nov. 13, 8 p.m. at the Anaheim Union High school Auditorium, 811 West Center St., Anaheim.

He is followed by Capt. Ed-

described as a "beautiful city landmark".

## Wants to See Trees Out

"I want to see the trees out!" said Councilman Thomas O. Speer, but when it came to voting he went along with the other councilmen on Council- man Harvey's proposal to leave the trees in and have a walk built behind thm. The developers will also plant a row of new young trees be- hind the old pepperwoods on the edge of the dedicated area so that if the original trees planted before Brea was incorporated in 1917, are re- moved the street will not be left without trees.

There were protests from the audience when Speer said that the trees must go and Howard Elchen of Heritage said "I want to be out of town when the trees are pulled."

"These old trees are part of Brea", declared Richard Basse, a rancher and member of the planning commission, who was in the audience.

Basse suggested that the

street be dedicated, but that improvement be held up un- til it is absolutely necessary to widen the north end of Brea Blvd.

## Suggests Islands

He said that he would be favorable to creating islands for the trees on both sides of the street, but he does not want to see the trees on either side of the street removed.

The trees under discussion on Monday are on the west side of the street.

"Trees not only provide a beautiful entrance to our city", but they are natural noise barriers and will continue to reduce the sound of traffic along Brea Blvd. as long as they are there", Basse said yesterday.

"It seems inevitable that the eucalyptus trees along Central Ave. will have to go, but let's keep the pepperwoods as long as we can.

Widening of Brea Blvd., which is a state route, has been prescribed as a main feeder into the new Brea (Please Turn To Page A-2)

See: "Pepperwoods"

# ABC Hears Merits Of Merit System

ABC - All Brea Citizens open forum for the objective Committee — will "sponsor presentation and discussion of all facts, and logical and well founded views, without endorsement thereof" according to by-laws adopted last night.

There were 49 persons, at the meeting which was held in the Youth Club Building and Don McBride, Sam Stone and Jack Smith took turns in presiding.

It was the second meeting of ABC and many of the residents of the area near the Mueller plant who came to the first session to air their noise problem were at the meeting last night.

## Explains Merit System

Brea's merit system operating under the civil service commission maintains a higher standard of municipal employees and provides job security for city workers, Charles Allman, chairman of the civil service commission, told the meeting.

He pointed out in some detail the benefits of the merit system to both the employees and the public, declaring that

neglect of duty or inefficiency, Allman told the ABC. He said that in order that a full board be maintained at all times a members serves until his suc- cessor is named.

He pointed out that city workers cannot become in- volved in politics without the risk of losing their jobs.

## Questions Asked

There were a number of questions from the floor concerning the merit system and the functions of the civil service commission.

Answering one question from the floor, former Police Chief W. E. (Bill) Atkins, who was in the audience, said that the civil service was introduced in Brea after four fifths of those who received a postal card mailing in 1950 indicated they wanted the merit system.

## Magnus May Speak

Also in the audience was Councilman Magnus, one of the severest critics of the civil service commission who will probably speak in rebut- tal to Allman at the next meeting of ABC in two weeks. A slate of officers will be of- fers by the nominating com-

Councilman Raymond Newt and seconded by Council- man Carl Harvey was passed by 4 to 1 vote. The negative v- was cast by Councilm (Please Turn To Page A-2) See: "Studebaker"



A. W. STUDEBAKER

## Scout To Speak At Booster Mee

Buck Lashley, veteran Br Olinda High School footb scout and former Wildc football player, will shed l anonymity tonight at 7 when he talks to the B Bench Warmer Booster Cl Ladies Night meeting.

He's expected to give a r- down on Laguna, whom t Wildcats battle on the ro Friday for the loop title.

The program is set for t high school cafeteria and refreshments will be serv- Players of the week will introduced and films of t Capistrano contest will shown.

Lashley was a member the 19633 Wildcat team whi was League champion a compiled an 8-3 record the season. The ballclub 1-25-19 to Inglewood in the C finals.

## Rain Moves In, May Stay Awhil

Rain moved in over t- area this morning and is e- pected to prevail with sho- ers tonight until clear- weather Thursday. The wea- erman says cooler temper- tures will accompany the p- cipitation with some gu- local winds.

No rain had been meas- at the local fire departm- today by 8 a.m., the us- gauge - checking hour.

High temperatures betw- 60 and 68 degrees are ex- pected through Thursday with night's low expected to dr- between 47 and 58.

The five - day forecast : the area calls for show- through tonight and possib- again in the north port- early next week. Temper- tures between three to s-

ONS DOLLS — Shown dolls they collected during Scout study of different parts of the world are (L.-R.) Martha Seiler, Jean-

nine O'Riley, and Chestine Joslin. The girls are under the direction of Mrs. Richard Seller.

STAR-PROGRESS PHOTO

## Park Board Will Expand Program Here

on Page A-1) asked why didn't be shut situation had

agnus replied mean putting out of work. at the problem as quickly as bright assured residents this

ncipal of the who is a resi- hborhood, sug- the company gging its feet" ut the necessary

### gging Feet"

a sharp reply who said that ad started tak- eps as soon as aware of the and they had dding the sit- applying what isures thought sen the sound. said that the gineers were his Friday they the job, work- as possible.

g back to the morning, nd I will again oblem with my ent who have to do every- to correct the

### n Nov. 18

ed the council ected to have finite to report ouncil meeting, e meantime, he the acoustical have determin- ld have to be ct the problem- we know what ne, we will do d.

### PROGRESS

ry Monday, Wed- ay evening by the Inc., 218 S. Brea ifornia. Telephone Entered as Second y 25, 1913 at the Brea, California, of March 3, 1997, paper to Print and Advertising of all e of the Superior e County in Action July 18, 1930. ates: 10c per copy; er month; by Mail, Whittier, La Mi- es, 3 Months \$1.80;

Expansion of Brea's recreational program on all-year and all-age basis was discussed at a meeting of the parks and recreation commission last night.

Newest additions to the program are a ceramic class and a little theater.

The commission heard last night that the city council had directed that specifications for electrical material be advertised for bids so that the commission would have equipment ready for the installation of lights in Arovista Park in December. Chairman Des Hornbuckle has arranged for Seebees to make the installation.

## Studebaker

(Continued from Page A-1)

Thomas O. Speer, who sometime ago had called for Studebaker's resignation as city administrator.

The council also approved of an agreement with Ernst & Ernst, management Consultants to assist in obtaining new city administrator and candidates and selecting a director of public works.

The letter said the consultants would advertise for candidates screen applications, interview candidates, check references, experience and background, give tests and participate in the oral reviews. The services will cost the city \$750 for each position, plus the cost of advertising. This will be checked by the city before it is placed.

Ralph Baker of 419 S. Laurel was appointed as a member of the parks and recreation commission, filling a vacancy created by the resignation of Allen West.

As indicated in Monday's Progress, it is probable that the new city administrator and director of public works will be hired on a contract basis. One year contracts with renewal options may be given the two men hired for top positions, enabling the council to make early changes if they

## Pepperwoods

(Continued from Page A-1)

Canyon Freeway, but those at Monday's meeting agreed that this may never be necessary.

### Plea for Pepperwoods

Robert Weldner of Buena Park Greenhouses made an eloquent plea for saving the could be planted and in five pepperwoods.

He said that other trees years that would have attained heights of 15 feet or more, but reminded the audience that it had taken a half century for the pepperwoods to attain their majestic beauty, providing a green canopy over the boulevard.

He said if the trees were destroyed in some manner or other their value would be estimated up to \$3,500 each.

With such street improvement as will be made now Brea Blvd. will be realigned at Deodara St. for better visibility.

Another condition to which the developers objected was underground utilities. The council agreed to permit poles at the rear lot lines with underground dips at the crossings.

### Water Line

The question of a water line along Brea Blvd. will be worked out with the city engineering department and head of the water department.

The matter of a \$300 an acre drainage assessment will be worked with the engineers and city administrator at the time of the bonding and, since Heritage is providing the drainage, it is probable that all or a major part of the assessment will be waived.

### CERAMICS CLASS

The parks and recreation commission will have a class in ceramics which will be conducted by Mrs. Stella Bath at 1255 State College Rd., Anaheim, Director James Coon announced today.

attending the regional conference at Disneyland later this month. Among the dignitaries attending the conference with by at least one Mexican governor.

### Sewer Line

The city engineer and city administrator will confer with Placentia engineers and set up a meeting between representatives of the two councils to work out an agreement on a sewer line to which will serve the Wes Ford development.

Mrs. Leatrice Brown was appointed as clerk-typist in the water department and Frances Cox was named as a switchboard operator and typist.

## Max Sturges To Run for Senate

Max Sturges, Newport Beach attorney, has announced his intention to seek the Republican nomination for State Senator from Orange County.

In announcing his candidacy Sturges said: "I will run as a conservative. If elected, I intend to do everything in my power to 'conserve' the taxpayers' money. It is my observation that a 'liberal' politician is one who is liberal with other people's money — the taxpayers'. I do not belong to the John Birch Society and am not acquainted with anyone who does."



## LUBE ROOM



Topics



By RANDY BRAGG

Frequent wheel alignment is important. Misalignment tears tires, strains bearings and steering linkage. Watch your parking. — Banging the curb throws wheels out of place.

## RANDY BRAGG

CHEVRON SERVICE  
Free Pick-up & Delivery  
700 E. IMPERIAL (PLAZA) HWY.  
PH. 529-1022 BREA

## —SHOP IN BREA—

# Brea Business Directory

## FISHER'S BREA PHARMACY

Your Retail Drug Store

is now known as Diamond Bar Ranch.

In September, 1919, a building that was to house Daugherty and later Security Chevrolet was started as the corner of Brea Boulevard and Birch, and was officially opened and completed the following January.

### Casa Brea Inn Built

Listed among the various owners of this garage was the name of James F. Bergman and Son (Walter) who operated the business from 1925 to 1931 in this business. After selling the garage the elder Bergmans took up their residence on the old homestead at Auguanga. Later they returned to Brea to make their home at 216 S. Madrona and again be near their sons Walter, James Morris and Aubrey Jake.

The J. D. Slevers home was said to be the first to be equipped with electricity.

The Casa Brea Inn, on East Ash Street, was built that year by J. C. Fredliph, who conducted a tailoring shop here.

Brea police cars received their first radio equipment in 1932. All local calls had to be diverted through the Los Angeles police department and relayed back to our own cars.

Later a transmitter was installed at the city hall using call letters MDAQ to improve the service and all cars were in contact with local head-

## DREAMS

