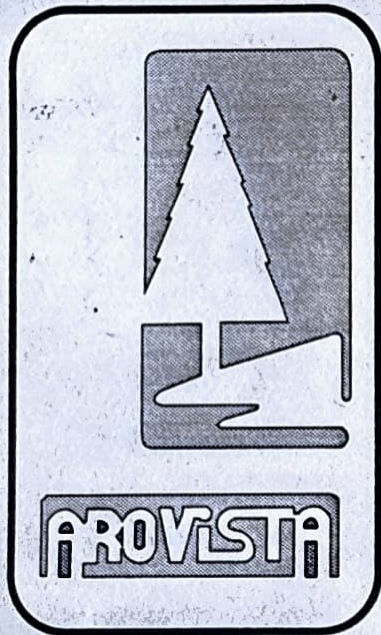


DEC. 5, 1992



# Arovista Park

PHASE II OPENING

 *Celebration!*

**Saturday, December 5, 1992, 10:00 a.m.**

## **Arovista Park**

At 13.5 acres, Arovista Park has the distinction of being Brea's largest park facility. The Park was built in 1958 on donated land with volunteer labor and donated materials. Because of age and extensive use, Arovista Park was identified by the City's Recreation and Parks Element as the number one facility in need of renovation.

Phase I, located at Imperial Highway and Berry Street, encompassed 6.5 acres and resulted in the upgrading of the multi-purpose sports fields used by nearly 100,000 people annually. It was completed in 1988.

Phase II, located across from the Brea Senior Center at Elm Street and Sievers Street, covers approximately 7 acres. Renovation began in 1990. Phase II improvements include walk ways, landscaping, 2 lighted basketball courts, a sand volleyball court, large and small group picnic areas, an amphitheater, a play area which complies with the Americans With Disabilities Act and parking area.

Located on the west side of the channel is the Jubilee Grove. The Grove, sponsored by the Jubilee Committee and the Environmental Committee consists of 75 trees purchased by 75 individuals, service organizations and local businesses as be a lasting tribute to Brea's 75th Birthday.

Funding sources for Phase II include:  
Brea Redevelopment Agency  
State of California Parks, and Recreation Department  
Orange County Supervisor, Gaddi Vasquez, Third District  
The Brea Foundation  
Pepsi-Cola Company  
Brea Disposal

The City of Brea  
Parks, Recreation and Human Services Commission  
and the  
Cultural Arts Commission

Cordially invite you to join the

 **Celebration!**

**Saturday, December 5, 1992**

**9:00 - 11:00 a.m.**

Free Pancake Breakfast by the Brea Lions Club

**10:00 - 10:30 a.m.**

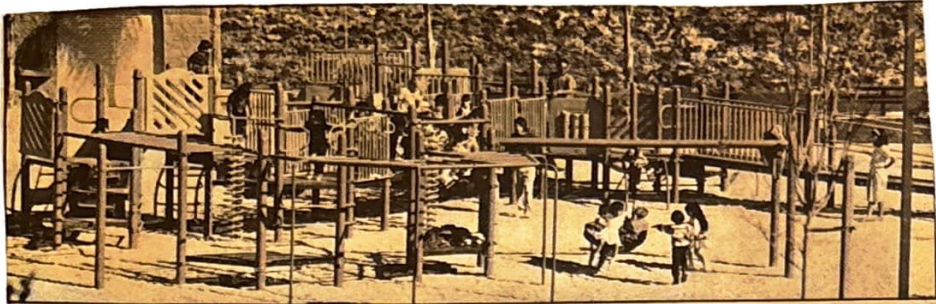
Park Opening Ceremony ♦ Jubilee Grove Dedication

**10:30 a.m.**

3 Man Hoop Basketball Tournament

Volley Ball Exhibition

Continuous Entertainment at the Amphitheatre



A. Trafford Templeton/North County News  
The new "Tot Lot" section of Arovista Park in Brea is specially adapted for people with disabilities.

## Arovista Park renovation to be marked at opening

The completion of the Arovista Park renovation will be celebrated with a grand reopening ceremony Saturday.

Sponsored by the city of Brea, the Parks, Recreation and Human Services Commission and the Cultural Arts Commission, the event will begin with a free pancake breakfast hosted by the Brea Lions Club, continue with an opening ceremony and Jubilee Grove dedication and be topped off with a basketball tournament and volleyball exhibition.

Located across from the Brea Senior Center at Elm and Sievers Streets, the improvements include new walkways, landscaping, two lighted basketball courts, a sand volleyball court, large and small group picnic areas, an amphitheater, expanded parking and a play area which complies with the

Americans with Disabilities Act.

The renovation of the park hit a financial hurdle when it was determined the new play area did not comply with the new Federal Disabilities Act passed in January.

City officials appealed to Gaddi Vasquez, Orange County supervisor, who provided \$40,000 in County discretionary funds to bring the play area up to code in time for the opening.

In addition to the county, funding was provided by the Brea Redevelopment Agency, State of California Parks and Recreation Department, the Brea Foundation, Pepsi-Cola Co. and Brea Disposal.

At 13.5 acres, Arovista Park is Brea's largest facility. The park was built in 1958 on donated land with volunteer labor and donated materials.

# Arovista Park Re-Opens

Even the sun turned out for the grand reopening of Arovista Park December 5. Some 500 people ignored an ominous weather forecast and were rewarded with a perfect day for a celebration. The event began with a free pancake breakfast, sponsored by the Brea Lions Club, followed by opening ceremonies, dedication of the Jubilee Grove, musical performances and was topped-off

with the Americans with Disabilities Act, is accessible to children of all abilities and circumstance. Citizens



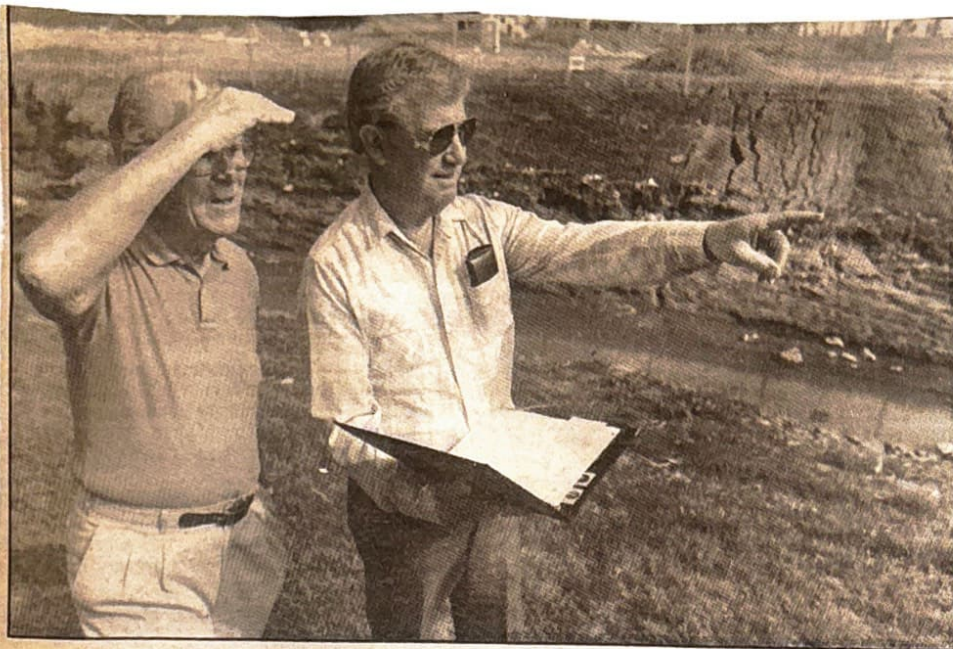
will be pleased to know that the new amphitheater, picnic areas and ballfields are available for rental. For reservation information, please call 990-7643.



and small group picnic areas, an amphitheater and a state-of-the-art play area, which in accordance

In addition to enjoying a celebration befitting Brea's largest park, guests got a look at the park's new amenities, which include walkways, landscaping, lighted basketball courts, a sand volleyball court, large





Visions: Karl H. Fanning (left), member of the Brea Environmental Committee and Orange County Tree Society and Cliff Churn, president of the Brea Environmental Committee, look over the site for the proposed urban forest at Arovista Park.

Staff photo by Michael Loren

## Forest planned for park

By Brian Hall  
Staff Writer

Typically, forests are in rural settings, far from where they can do the most good for the most people.

Brea is attempting to remedy that contradiction with an urban forest. Yes, the woods will come to Arovista Park if the city is successful in attaining a state grant. The \$293,720 grant would spruce up a relatively barren area of the park, emit oxygen and soak up emissions from cars and trucks passing along Imperial Highway. Im-

perial is set to be widened, but officials said they were unsure whether delays caused by a review of the road project will change the odds of receiving the funding. Last year, the grant was denied by two points, said Kathie DeRobbio, administrative assistant to community services.

This time there's a higher chance of success because the proposal is better defined and "more tree-oriented," said maintenance services director Pat McCarron.

Last year, the city had proposed planting 50 to 75 trees but now has committed to a total of 75, a number coincidentally corresponding to the city's 75-year history.

The grant also includes irrigation and grading of the site.

The jubilee steering committee would like one event to give something back with lasting impact.

A part or all of the urban forest may even be dubbed "the Jubilee Grove." Walkways would lead out to the woods.

There would be a drinking fountain and most likely, free-standing interpretive signs identifying species and explaining how the trees help the environment.

A rustic gazebo would stand adjacent to the forest, allowing Scouts to conduct ecological programs.

"It will be a real educational, nature setting," DeRobbio said.

The area would include nature walks, picnic tables and passive recreation, but that could later be modified.

The Brea Environmental Committee and Tree Society were consulted.

"The city finally woke up to the fact that this is something the Environmental Committee has been interested in for this year-and-a-half of our existence and that we possibly might have some input for them that was valuable," said Cliff Churn, the committee chairman.

An arborist worked with the city on the application, emphasizing native and drought-resistant trees. He also would aid in developing the forest.

"We did think we should make one impractical exception. We'll have at least one really beautiful, blooming tree," Churn said.

The most prevalent trees would be shamel ash, Canary Island pine, California sycamore, white alder and California pepper.

The forest would become Phase III of the improvements to Arovista Park. Brea expects to hear in April whether the grant application has been accepted and the funds will be allocated in July.

## Work To Start On Brea City Park

### City Council Okays To Operate In Brea

City Council last night, enterprising business-ent of luck' and grant- mission to start a 24- service in Brea.

g the business license Ward Sr. and Jr., who ervice station at 346 S. e. Ward Sr. said they e a 24-hour towing serv- an to operate the taxi hat basis.

that several persons in ve tried to make a suc- xl business in Brea, but broke because they had delin.

**BREA** — Weather permitting, the long-awaited rough grading work in preparation for improvements to Brea's new City Park site on the west side of town will begin on Thursday morning, it was announced at the City Council meeting last night by Councilman Frank Schweitzer Jr.

The work was authorized some time ago but was held up until winter rains are over. There pieces of heavy grading equipment will be used to work over the park area east of the drainage channel which divides the park down the middle. Equipment rental cost of \$14 per hour will come out of city park improvement funds.

The grading work is in preparation for improvements which the Brea Lions Club plans with the \$1,000 the organization earned from the rodeo last summer.

Schweitzer, a Lions Club official who has been working on the project for several months, said the club will provide picnic tables and barbecue pits once rough grading is completed.

#### ACCEPT MAP

Last night, councilmen accepted a detailed map prepared by Don Allyn, landscape architect who has been hired by the city to prepare plans for the park. This map details the locations of improvements in the southeast section of the park, including the picnic and play areas.

The park project has been one planned and discussed for many

years. About 12 years ago, Union Oil Company deeded the city 17 acres lying along the west city limits. The section on the west side of the drainage channel contains a natural tree-lined amphitheater which will be made into a baseball field with bleachers lining the curved embankment.

More than a year ago, the city enlarged the park by purchasing from Union Oil Company nine acres lying along the east side of the 17-acre section. This cost \$1,000 an acre, and come out of an original fund of \$14,000 set aside for parks.

#### PLANS

Complete plans, as prepared on a scaled contour model made by Architect Allyn, call for a large parking area, a community youth center, several recreational areas, ball diamond and picnic areas. The scale model is in the window of the Chamber of Commerce office on Pomona Ave.

City Engineer Sidney Lowry said grading work will probably take five to seven days. If time allows, the equipment will be used to start grading work on the west side of the channel.

On the subject of the channel, City Atty. Harold McCabe is drafting a petition form which will be circulated throughout the city, asking the Orange County Board of Supervisors to improve and line the drainage channel with Flood Control District funds available for that purpose.

# Arovista Park Grand Opening December 5

Join the Brea community in celebrating the grand reopening of Arovista Park on Saturday, December 5. The event, sponsored by the Park, Recreation and Human Services Commission and the Cultural Arts Commission begins at 9 a.m. with a free Pancake Breakfast, courtesy of the Brea Lions Club. At 10 a.m. an official opening ceremony will be held in the new amphitheater, immediately followed by the dedication of the Jubilee Grove. Live musical entertainment featuring the Brea Olinda Wildcat Band and Chamber Choir, singers from the Brea Civic Light Opera and a three-on-three basket-



*Lighted basketball courts are one of the major features of the renovation project at Arovista Park, Imperial Highway and Berry Street.*



*Outdoor concerts, theatre productions and other community events will be held at the new open-air amphitheater.*

ball tournament and volleyball exhibition will complete the day.

## Park Improvements

Originally built in the early 1960's, Arovista Park is one of the City's most popular recreational facilities. This long-awaited improvement project greatly enhances the 5.3 acre facility with amenities including an open-air amphitheater, volleyball and basketball courts and a group picnic area. Other improvements include:

- Landscaping (trees, shrubbery and new grass areas)

- Tot lot (both the equipment and playing surface meet new federal regulations concerning accessibility for the disabled)
- Expansion and rehabilitation of the parking lot

## Dedication of the Jubilee Grove

As a lasting tribute to Brea's 75th birthday a Jubilee Grove, consisting of 75 trees purchased by 75 individuals, service organizations and area businesses has been planted in the south west section of the park. A marker located at the entrance to the grove acknowledges each donor. Organized by the Jubilee Steering Committee and the Environmental Committee, the Grove features an assortment of trees including the Flowering Jacaranda, Sweet-



*City employee Don Fretwell applies the finishing touches to the Jubilee Grove entry way.*

shade, Crepe Myrtle, Yellow Belle, Tacoma Stans, Canary Island Pine, London Plane, California Pepper, Coral Gum Eucalyptus and the Purple Leaf Plum.

APR. 16 1953



## EDITORIALS

### DREAMS THAT COME TRUE

The realization of a dream takes time and plenty of hard work. There has been a dream in Brea for the past several years of a city park which would provide all the recreation facilities needed to keep the populace of a growing city happy.

Now this dream seems to be reaching the stage where plenty of hard work and the support of the citizenry are all that is needed to transfer a Brea city park from the talking and dreaming stage into the realm of possibility.

Years of talking have brought the need into focus, and now the enthusiasm, the talent, and most important, the money seems to be present making it possible to at least start on the project.

It seems to us that it is now directly up to the people of Brea to see whether the building of the park is going to be pushed to completion or left dormant again for months or years while the people complain that this official or that board is holding up the job.

In many cases the government may not be as responsive to our wishes as we would desire, but in this case, where it seems that the highest echelon that must be dealt with is the county government, it certainly looks like Breans united behind the park project could exert enough pressure in the right places to see the thing through.

Breans will be given their first opportunity to stand up and be counted in favor of a new park for the city in the very near future. At the last meeting of the city council the city attorney was ordered to draw up papers petitioning the county to do something about the flood control problem here, which has held up park development in the past. When you are contacted to sign the petition you will have a chance to go on record as favoring the new park because, without adequate flood control, the area designated for the park can never be properly developed.

Periodically in the past, during the rainy season, the site of the park has been partially inundated, but the county can correct this condition if it will expend a little money. (Incidentally, the county collects tax monies to handle just such problems, but has thus far ignored northern Orange county.)

In conclusion, we not only urge all Breans to stand up and be counted as favoring the park, but to make this a continuous effort until the goal is achieved.

We hope Brea has a park that can be partially used this summer and by the summer of 1955 we would like to see a completed recreation park area such as a young, growing city like Brea deserves.

### Council Okays Permit To Operate Taxis In Brea

**BREA** — City Council last night wished two enterprising businessmen "the best of luck" and granted them permission to start a 24-hour taxi service in Brea.

Requesting the business license were Roy L. Ward Sr. and Jr., who operate a service station at 346 S. Pomona Ave. Ward Sr. said they already have a 24-hour towing service and plan to operate the taxi service on that basis.

It seems that several persons in the past have tried to make a success of a taxi business in Brea, but have gone broke because they had no other sideline.

## Register Superior Orange County News

A6 The REGISTER, Santa Ana, Cal. Tuesday, April 7, 1953

### Work To Start On Brea City Park

**BREA** — Weather permitting, the long-awaited rough grading work in preparation for improvements to Brea's new City Park site on the west side of town will begin on Thursday morning, it was announced at the City Council meeting last night by Councilman Frank Schweitzer Jr.

The work was authorized some time ago but was held up until winter rains are over. There pieces of heavy grading equipment will be used to work over the park area east of the drainage channel which divides the park down the middle. Equipment rental cost of \$14 per hour will come out of city park improvement funds.

The grading work is in preparation for improvements which the Brea Lions Club plans with the \$1,000 the organization earned from the rodeo last summer.

Schweitzer, a Lions Club official who has been working on the project for several months, said the club will provide picnic tables and barbecue pits once rough grading is completed.

#### ACCEPT MAP

Last night, councilmen accepted a detailed map prepared by Don Allyn, landscape architect who has been hired by the city to prepare plans for the park. This map details the locations of improvements in the southeast section of the park, including the picnic and play areas.

The park project has been one planned and discussed for many

years. About 12 years ago, Union Oil Company deeded the city 17 acres lying along the west city limits. The section on the west side of the drainage channel contains a natural tree-lined amphitheater which will be made into a baseball field with bleachers lining the curved embankment.

More than a year ago, the city enlarged the park by purchasing from Union Oil Company nine acres lying along the east side of the 17-acre section. This cost \$1,000 an acre, and come out of an original fund of \$14,000 set aside for parks.

#### PLANS

Complete plans, as prepared on a scaled contour model made by Architect Allyn, call for a large parking area, a community youth center, several recreational areas, ball diamond and picnic areas. The scale model is in the window of the Chamber of Commerce office on Pomona Ave.

City Engineer Sidney Lowry said grading work will probably take five to seven days. If time allows, the equipment will be used to start grading work on the west side of the channel.

On the subject of the channel, City Atty. Harold McCabe is drafting a petition form which will be circulated throughout the city, asking the Orange County Board of Supervisors to improve and line the drainage channel with Flood Control District funds available for that purpose.

# Play Daze

By Aaron Boehme  
Brea Progress

**F**or "Scooter" Long, Monday at Arovista Park was the first time his mother ever felt safe enough to leave him anywhere alone.

The presence of three Community Services Department employees convinced Paulette Long to leave her 11-year-old son at the park, but she still gave him a quarter and showed him where the telephone was before she left.

"He's got so much energy," she said as she dropped him off. "He's got four older sisters and his sister kind of wants him to get out of the house, too."

The park's Spring Play Daze offers Brea children and parents a break during spring vacation by featuring kids' games, arts, crafts, music and special activities from 10 a.m. to 3 p.m. through Friday. It also gives parents a respite from the week's supervisory duties. The park is on Elm Street near the corner of Sievers Avenue.

Bookstar Story Time at 11 a.m. is the featured activity today. Friday, Play Daze will end with a 2 p.m. ice cream social.

If it weren't for the park program, "I guess I'd be going nuts with them at home," said Paula Carranza as she dropped off her two children.

On Monday, volunteers from a local restaurant helped the Community Services Department counselors teach the kids how to make Olive Garden Pasta Art.

Tuesday, Brea firefighters wowed the kids by demonstrating some of their lifesaving equipment.

"We thought the kids needed some planned, organized activities so they're not just out wandering or at home alone," said Connie Oyler, recreation supervisor for the city.

Oyler was careful to point out that although the city provides supervision, Play Daze is not a day-care program and children can come and go as they please.

Kim McDaniel and her kids are regulars at city-sponsored children's activities, and now that her foot is in a cast, the extra supervision is a nice bonus.

McDaniel escorted three of her four children to Play Daze Monday and balanced her checkbook in the fresh air while her kids joined the hubbub.

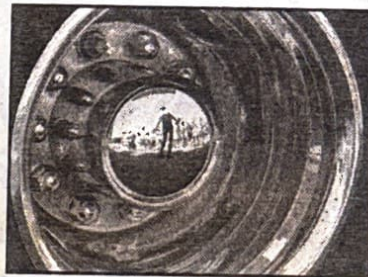
"I like to play the games and play on the playground and there's enough room for me to rollerblade and sometimes they have movies," McDaniel's son, James Jr., said. "It's a lot of fun here."

For more information call 671-4427.



**A SPRING FLING:** Brea firefighters, left, give children at the Arovista Park Spring Play Daze a bird's eye view atop Fire Truck No. 1. Kristal Carr, 9, below left, protects her ears during a demonstration of the truck's siren and horns. Capt. John Breaux, reflected in the firetruck wheel below, talks to dazzled children about his job as a firefighter.

M. Loren Hernandez/  
Brea Progress



# Brean Makes Park Sign

BREA — No one seemed to be more pleasantly surprised than Brea city officials when a beautiful hand-carved, multi-colored sign appeared at Arovista Park recently.

Made of redwood, the sign



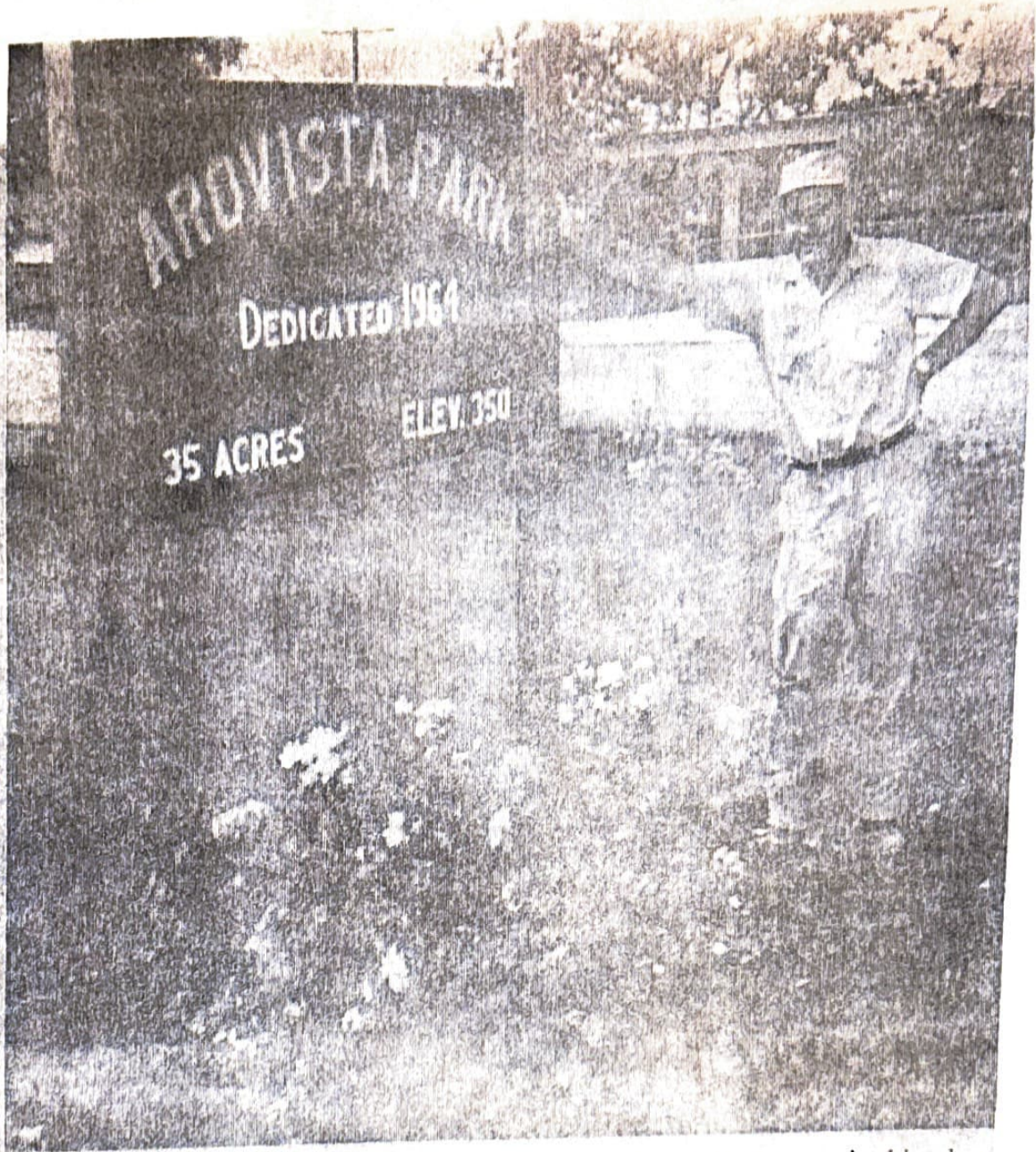
looks much like those posted in the mountains at national parks.

On checking, City Manager Garth Lipsky found that a city employe had made the huge sign in his spare time at home.

Don Fretwell, in charge of maintenance at the park, decided that an entrance sign was in order but wanted to save all the money in the park budget for further planting and playground equipment.

He has a background in the painting trade and has worked with wood as a hobby for years, so he just went out and bought the wood and hacked away.

Along with the name of the park and dedication date, he added a pine tree on each side for effect.



**HOMEMADE** —When Don Fretwell, who is in charge at Arovista Park in Brea, decided the park needed a new sign, he didn't bother with going through channels — he just

went out and made one in his shop at home. The sign, which looks much like signs at national parks, was designed and hand carved by the city employe. (News Tribune Photo)

# Development Program

## City May Spend \$100,000 to Build Ball Field, Picnic, Play Facilities

A 10-year, seven section model plan for the development of the 19-acre park site in the southwest section of Brea was submitted to the city council Monday night by Harold Carver, chairman of the Park and Recreation Commission which devised the program.

The seven point program if carried to its completion over the next decade would see the undeveloped acreage, which the city has obtained in several transactions during the last few years, become a lush grass and tree covered area with two ball stadiums, picnic and play facilities, rest rooms, a civic building development, a pistol and rifle range, tennis courts and parking facilities for approximately 385 cars.

### \$100,000 To Complete

It has been proposed that the city council budget \$100,000 during the next 10 years to turn the commission's paper plans into a reality. The commission went so

far as to suggest particular projects during the next three-year period which would cost \$35,000.

Park and Recreation Chairman Carver said that it was the commission's desire that the city adopt the master plan, authorize the initial capital expenditures and direct the city engineer and park superintendent to prepare plans to expedite development of the 10-year program.

It was decided that the council and the park commission would schedule a joint meeting at some future date to discuss the entire program the commission has set forth. In the meantime, the councilmen will study the proposals.

### Seven Park Areas

As envisioned by the commission, the park falls into seven natural geographical areas. The improvement proposed for each sector is as follows: (1) the large bowl-like area at the northwest edge of the park, just off Imperial Highway. This would contain a baseball diamond and a softball field which could also be used for rodeos, camp outs and Scout activities. When money is available, seating would be constructed for 4000 people at the large field and 750 people at the softball diamond. A few seats at a time would be constructed until the total seating capacity was reached.

(2) This sector would include the main picnic and recreation facilities with parking for 300 cars adjoining. Also envisioned for this area, which is on the east side of the flood control channel near the west end of Elm Street, are two rest rooms, two tennis courts, a picnic kitchen, a bandstand and an existing barbecue.

(3) A plateau on the west side of the park and south of the ball diamond site. This would be a game area with facilities for roller skating, volley ball, square dancing, fly casting and outdoor camping.

(4) A picnic area covered by an eucalyptus grove. This section of the park might also be used for an archery range, the exact location of which would depend upon the flow of the flood control channel.

(5) Tentatively designated as a rifle and pistol range at the park's south edge.

(6) This would be a small picnic area accessible from Imperial Highway at the northerly end of the park. It would have tables for 200 people, an 85-car parking lot, playground equipment and a rest room.

(7) Area seven is located on the high ground bordered by Elm Street on the north and Madrona Avenue on the east. The plans indicate it will be reserved for buildings which would be used by civic groups and service clubs.

### Three Year Plan

During the next three years the Park and Recreation Commission proposes spending \$35,000 on a six-point program to at least start initial development in several sectors of the park.

Chairman Carver emphasized that this six-point plan was based upon the maximum estimated amount of money which would be available from tax receipts designated for the park. These initial expenditures would be designed to make the areas useable; it is felt that additional improvements might be desirable later.

The commission's report to the council suggested that the following projects be completed in the order listed: (1) baseball diamond and stadium, \$8,000; (2) rest rooms, kitchens, and picnic area, \$7,000; (3) parking, auto ramps and planting, \$4000; (4) rest rooms, \$4000; (5) rest rooms and group picnic area, \$8000; and (6) softball diamond, seating for 200, \$4000.

The amounts indicated with each project are only rough estimates of the money available and do not necessarily indicate an accurate picture of the costs, Carver stated.