

## Brea Museum & Historical Society



495 S. Brea Blvd.  
Brea, CA. 92821



*"Preserving the past...  
...educating the future"*

### OUR MISSION

The Brea Historical Society, founded in 1971, collects, preserves and displays the heritage and history of the City of Brea. Through educational programs, research studies, exhibitions, and workshops, the Brea Historical Society continues to document and promote Brea's unique contribution to an ever-changing world.

### OUR VISION

- To pursue the highest standards of collection, preservation and historical presentation.
- To provide public access to historical materials.
- To promote discussion about historical topics.
- To help visitors become witnesses to history.

## Special Thanks

We extend our deepest gratitude to all who helped make this exhibit possible. **The City of Brea**, for establishing this program, **Heather Bowling** from the Brea Gallery for taking such good care of the artifacts for so many years, **Michael Kim, Nancy Lee, Masako White, and Monica Koos** for reviewing the artifacts for display, and the many delegates from **Lagos de Moreno (Mexico), Hanno (Japan), and Anseong (South Korea)**, for making the program a success year after year.

### THE BREA MUSEUM & HISTORICAL SOCIETY



495 S. Brea Blvd., Brea, CA. 92821

## PEACE through Cultural Exchange



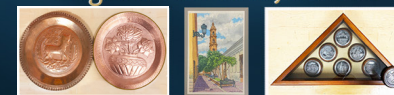
### •Hanno, Japan



### •Anseong, South Korea



### •Lagos de Moreno, Mexico



On display at 501 S. Brea Blvd. (across the street from the Museum)

## THE BREA MUSEUM & HISTORICAL SOCIETY

495 S. Brea Blvd. CA 92821 • 714-256-2283

[www.breamuseum.org](http://www.breamuseum.org)

© All Rights Reserved. Poster Designed by Kaleo Welborn - [kaleo10@att.net](mailto:kaleo10@att.net)



# PEACE - *through Cultural Exchange*

On September 11, 1956, President Dwight D. Eisenhower, gathered Americans from all walks of life to a White House Conference on citizen diplomacy. In the conference, which was the capstone of his "People to People Program" he expressed his goal to establish world peace by strengthening international friendships, learning of other cultures, and promoting citizen diplomacy. It was an ambitious idea but today, 138 countries with more than 1800 partnerships form Sister Cities International. The City of Brea has three Sister City Partnerships: Lagos de Moreno Mexico, Hanno Japan, and Anseong South Korea. The artifacts in this exhibit, represent a small portion of the beautiful gifts that have been exchanged over the years.

## Lagos de Moreno, Mexico

Founded in 1563 as Villa Santa Maria de los Lagos by Don Hernando Martel, an Andalusian conquistador, Lagos de Moreno has been an economic and cultural center for more than 400 years. Located in the State of Jalisco, Lagos de Moreno, the city remains an important cultural and tourist destination with a rich history and architectural treasures dating back to the 17th century.



On October 13, 1969, Brea City Council issued Resolution 69-59, adopting the City of Lagos de Moreno as its first Sister City, and extending a cordial invitation to said city to engage in a program to promote mutual understanding, cultural exchange, and economic cooperation.



For more than 50 years, delegates from both cities have visited each other's country, shared ideas, provided educational opportunities for students, and exchanged beautiful gifts.

## Hanno, Japan

Founded on April 1, 1889 as a town and designated a city on January 1, 1954, Hanno is bordered by Tokyo to the south and the Chichibu region to the west. With a total area of just under 75 square miles, and surrounded by mountains and rivers, the city offers a sense of tranquility amongst the hustle and bustle of modern life. Hanno is home to several pharmaceutical and electronics firms.



On September 16, 1980, Brea City Council issued Resolution 80-115 declaring its intent to establish a sister city relationship with Hanno Japan after being requested to do so by the Brea Sister City Association. On January 5, 1981, the city of Hanno Japan became our second sister city.



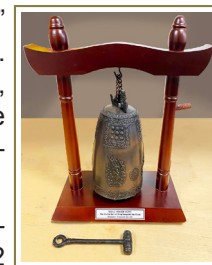
For 30 years the delegates from both cities have engaged in numerous cultural and community events in both Hanno and Brea including student exchanges.

## Anseong South Korea

After centuries of territorial border shifts and reorganizations, the county of Anseong became the city of Anseong in 1998. Located in the southernmost part of Gyeonggi-do, the city borders Pyeongtaek, Icheon, Cheonan, Jincheon, Eumseong, and Yongin. Territory in the northeastern section is considerably higher than the southwestern section where several rivers flow into the Yellow Sea.



Known as "The City of Masters" the city has a rich artisan culture. Known for brass craftsmanship, artists of the region produce some of the world's finest examples of brassware.



On July 6, 2010, Brea City Council issued Resolution 2010-72 declaring its intent to establish a sister city relationship with Anseong, South Korea.

For 10 years the delegates from both cities have engaged in numerous cultural and community events in Anseong and Brea, including several student exchanges.

