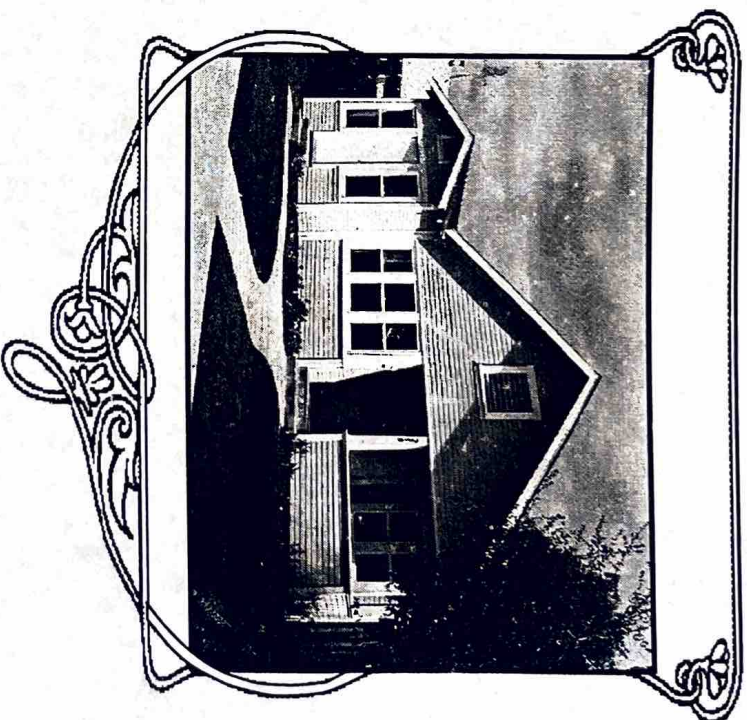


Charles E. Kinsler and Family Fact Sheet

- ◆ Charles was born in Otto, Cattaraugus County, N.Y. on Jan. 4, 1878, the son of James and Ada (Deming) Kinsler.
- ◆ His childhood was spent in the town of Bradford, McLean County, PA. There he worked for the J.T. Jones Oil Company of Bradford.
- ◆ As a result of the outbreak of the Spanish-American War, Charles enlisted in the army, joining the 13th Infantry Regiment. Fighting alongside Teddy Roosevelt on San Juan Hill, he was wounded in the left leg above the knee in July 1898 and was forced to spend the night on the battlefield. The consequent exposure and loss of blood is said to have affected his heart.
- ◆ After discharge from the army, he came to California in December 1899 and worked for about a year in the employ of the Olinde Oil and Land Company.
- ◆ He then moved to Whittier and was employed by the Home Oil Company.
- ◆ In 1901 Charles went to work at the State Reform School in Whittier. There he remained until May 1906. During that period he served as major and drillmaster.
- ◆ In 1903 he was selected to drive a ceremonial splide during the festivities when the Pacific Electric Railway (the Red Cars) reached Whittier from Los Angeles.
- ◆ On June 10, 1904 in Barre, VT he married Lena Morse of that town.
- ◆ In May 1906 he moved with his wife Lena to the Puente Oil Lease in the Puente Hills where they lived and he worked.
- ◆ Their first child, Thelma, was born on Oct. 19, 1906. Arlene Kinsler was born May 18, 1907 and Mildred on September 25, 1910.
- ◆ In 1911 he built the first house on S. Orange Ave. at 135 S. Orange. A year later he built the home next door at 129 S. Orange Ave. where he lived with his family until his death in 1934.
- ◆ The Brea Hotel belonged to him or was leased by him from approximately 1914 to 1917. During this time it was called the Kinsler Hotel.
- ◆ Charles was the first Secretary of the newly-formed Brea Chamber of Commerce.
- ◆ He was a very early member of the Brea School Board.
- ◆ In 1916 he headed Brea's drive for incorporation. On November 21, 1916 he was appointed by the Board of Supervisors of Orange County to conduct a census of Brea to see if it could qualify for incorporation. We had to have at least 500 residents, and the census found that we had 732.
- ◆ Charles was elected as Brea's first City Clerk in 1917.
- ◆ He was selected by the City's Board of Trustees (City Council) to be Brea's first City Recorder on April 25, 1917.
- ◆ He worked as a Brea real estate and insurance salesman from 1917 until his death in 1934.
- ◆ From 1917 to 1923 he served as Secretary of the Brea Oil Workers' Union.
- ◆ A charter member of Brea's Cironi Masonic Lodge No. 656 in 1917, Charles was its first secretary and continued in that capacity until he died.
- ◆ He was Brea's notary public.
- ◆ In 1920 he was chosen president of the newly-formed Orange County Central Labor Council. He remained president until 1923, being elected three times.
- ◆ In 1922 Charles and Lena adopted Ralph Leland Winchell, changing his name to Leland Charles Kinsler.
- ◆ The Board of Trustees (City Council) appointed Charles City Recorder on May 9, 1924.
- ◆ Arlene Kinsler died on March 24, 1925. She was buried at Loma Vista Cemetery in Fullerton.
- ◆ On May 2, 1928 Charles was named City Judge of Brea.
- ◆ An active member of the Imperial Highway Association, he worked to bring the highway through Brea.
- ◆ He was selected Brea's Fire Chief in January 1932.
- ◆ Chairman, Boy Scouts of America, Brea Branch. He also was a member of the County Executive Committee of the Boy Scouts.
- ◆ Charles died at his home on July 11, 1934 of heart trouble. The Mayor at the time, L.A. Hogue, issued a proclamation that appeared on the front page of the Brea Progress honoring Charles and closing all Brea businesses for two hours during his funeral. He was buried at Loma Vista Cemetery next to his daughter, Arlene.
- ◆ Lena Kinsler died May 26, 1976. She is buried at Loma Vista Cemetery

Charles E. Kinsler House Plaque Ceremony



Originally located at 129 S. Orange Avenue
Relocated to 258 S. Redwood Avenue in 1999
Brea Historic Landmark No. 13
Thursday, March 15, 2001



Charles C. Kinsler Plaquing Ceremony
March 15, 2001



Opening Remarks
Mayor Pro Tem, Marty Siminoff, City of Brea

Historical Background
Brian Saul, Vice President of the Brea Historical Society

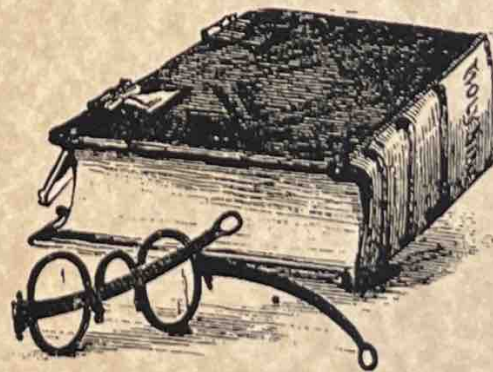
Rick Eiden, President of the Orange County Central Labor Council

*Linda Sanchez-Valentine, Executive Secretary/Treasurer of the
Orange County Central Labor Council*

Burnie Dunlap, President of the Brea Chamber of Commerce

Unveiling of the Historic Resources Register Plaque
Chuck Kinsler, Grandson of Charles and Lena Kinsler

*The relocation and rehabilitation of the Kinsler House was
made possible by funding provided by the Brea Redevelopment Agency.*



SOME FACTS ABOUT CHARLES C. KINSLER
and Family

Charles

1. ~~He~~ was born in Otto, Cattaraugus County, N. Y. on January 4, 1878, the son of James and Ada (Deming) Kinsler.
2. His childhood was spent in the town of Bradford, McLean County, Pa. There he worked for the J. T. Jones Oil Company, of Bradford.
3. As a result of the outbreak of the Spanish-American War, Charles enlisted in the army, joining the Thirteenth Infantry Regiment. Fighting alongside Teddy Roosevelt on San Juan Hill, he was wounded in the left leg above the knee in July 1898 and was forced to spend the night on the battlefield. The consequent exposure and loss of blood is said to have affected his heart.
4. After discharge from the army, he came to California in ~~approximately~~ December 1899 and worked for about a year in the employ of the Olinda Oil and Land Company.
5. He then moved to Whittier and was employed by the Home Oil Company.
6. In 1901 Charles went to work at the State Reform School in Whittier. There he remained until May 1906. During that period he served as major and drillmaster.
7. In 1903 he was selected to drive a ceremonial spike during the festivities when the Pacific Electric Railway (the Red Cars) reached Whittier from Los Angeles.
8. On June 10, 1904 in Barre, Vt. he married Lena Morse of that town.
9. In May 1906 he moved with his wife Lena to the Puente Oil Lease in the Puente Hills where they lived and he worked.
10. Their first child, Thelma, was born on Oct. 19, 1906. Arlene Kinsler was born May 18, 1907 and Mildred on Sept. 25, 1910.

SOME FACTS ABOUT CHARLES C. KINSLER
and Family

Charles

1. ~~He~~ was born in Otto, Cattaraugus County, N. Y. on January 4, 1878, the son of James and Ada (Deming) Kinsler.
2. His childhood was spent in the town of Bradford, McLean County, Pa. There he worked for the J. T. Jones Oil Company, of Bradford.
3. As a result of the outbreak of the Spanish-American War, Charles enlisted in the army, joining the Thirteenth Infantry Regiment. Fighting alongside Teddy Roosevelt on San Juan Hill, he was wounded in the left leg above the knee in July 1898 and was forced to spend the night on the battlefield. The consequent exposure and loss of blood is said to have affected his heart.
4. After discharge from the army, he came to California in ~~approximately~~ December 1899 and worked for about a year in the employ of the Olinda Oil and Land Company.
5. He then moved to Whittier and was employed by the Home Oil Company.
6. In 1901 Charles went to work at the State Reform School in Whittier. There he remained until May 1906. During that period he served as major and drillmaster.
7. In 1903 he was selected to drive a ceremonial spike during the festivities when the Pacific Electric Railway (the Red Cars) reached Whittier from Los Angeles.
8. On June 10, 1904 in Barre, Vt. he married Lena Morse of that town.
9. In May 1906 he moved with his wife Lena to the Puente Oil Lease in the Puente Hills where they lived and he worked.
10. Their first child, Thelma, was born on Oct. 19, 1906. Arlene Kinsler was born May 18, 1907 and Mildred on Sept. 25, 1910.

SOME FACTS ABOUT CHARLES C. KINSLER
and Family

Charles

1. ~~He~~ was born in Otto, Cattaraugus County, N. Y. on January 4, 1878, the son of James and Ada (Deming) Kinsler.
2. His childhood was spent in the town of Bradford, McLean County, Pa. There he worked for the J. T. Jones Oil Company, of Bradford.
3. As a result of the outbreak of the Spanish-American War, Charles enlisted in the army, joining the Thirteenth Infantry Regiment. Fighting alongside Teddy Roosevelt on San Juan Hill, he was wounded in the left leg above the knee in July 1898 and was forced to spend the night on the battlefield. The consequent exposure and loss of blood is said to have affected his heart.
4. After discharge from the army, he came to California in ~~approximately~~ December 1899 and worked for about a year in the employ of the Olinda Oil and Land Company.
5. He then moved to Whittier and was employed by the Home Oil Company.
6. In 1901 Charles went to work at the State Reform School in Whittier. There he remained until May 1906. During that period he served as major and drillmaster.
7. In 1903 he was selected to drive a ceremonial spike during the festivities when the Pacific Electric Railway (the Red Cars) reached Whittier from Los Angeles.
8. On June 10, 1904 in Barre, Vt. he married Lena Morse of that town.
9. In May 1906 he moved with his wife Lena to the Puente Oil Lease in the Puente Hills where they lived and he worked.
10. Their first child, Thelma, was born on Oct. 19, 1906. Arlene Kinsler was born May 18, 1907 and Mildred on Sept. 25, 1910.

11. In 1911 he built the first house on S. Orange Ave., it being at 135 S. Orange. A year later he built the home next door, at 129 S. Orange, where he lived with his family until his death in 1934.
12. The Brea Hotel belonged to him or was leased by him from approximately 1914 to 1917. During this time it was called the Kinsler Hotel.
13. Charles was the first secretary of the newly-formed Brea Chamber of Commerce.
14. He was a very early member of the Brea School Board.
15. In 1916 he headed Brea's drive for incorporation. On November 21, 1916 he was appointed by the Board of Supervisors of Orange County to conduct a census of Brea to see if it could qualify for incorporation. We had to have at least 500 residents, and the census found that we had 732.
16. Charles was elected as Brea's first City Clerk in 1917.
17. He was selected by the city's Board of Trustees (City Council) to be Brea's first City Recorder on April 25, 1917.
18. He worked as a Brea real estate and insurance salesman from 1917 until his death in 1934.
19. From 1917 to 1923 he served as secretary of the Brea Oil Workers' Union.
20. A charter member of Brea's Citrol Masonic Lodge No. 656 in 1917, Charles was its first secretary and continued in that capacity until he died.
21. He was Brea's notary public.
22. In 1920 he was chosen president of the newly-formed Orange County Central Labor Council. He remained president until 1923, being elected three times.
23. In 1922 Charles and Lena adopted Ralph Leland Winchell, changing his name to Leland Charles Kinsler.
24. The Board of Trustees (City Council) appointed Charles City Recorder on May 9, 1924.
25. Arlene Kinsler died on March 24, 1925. She was buried at Loma Vista Cemetery in Fullerton.
26. On May 2, 1928 Charles was named City Judge of Brea.
27. An active member of the Imperial Highway Association, he worked to bring the highway through Brea.

~~28. As of 1931, he belonged to the Citrol Lodge, F. & A. M., at Brea;~~

Fullerton Chapter, R. A. M.; Fullerton Commandery, K. T.; Al
Malaikan Temple, A. A. O. N. M. S., at Los Angeles; Brea Lodge,
K. P.; Anaheim Lodge, B. P. O. E.; Ontario Lodge, D. G. O. K.; the
Modern Woodmen of America; the United Spanish War Veterans at
Fullerton; and the Ancient Egyptian Order of Sciots at Fullerton.

- 28 ~~28~~. Selected Brea's Fire Chief in January 1932.
- 29 ~~29~~. Chairman, Boy Scouts of America, Brea Branch. He also was a member
the County Executive Committee of the Boy Scouts.
- 30 ~~30~~. Charles died at his home on July 11, 1934 of heart trouble. The
mayor at the time, L. A. Hogue, issued a proclamation that
appeared on the front page of the Brea Progress honoring Charles
and closing all Brea businesses for two hours during his funeral.
He was buried at Loma Vista Cemetery next to his daughter Arlene.
- 31 ~~31~~. Lena Kinsler died May 26, 1976. Burial was at Loma Vista Cemetery.

HISTORY OF
ORANGE COUNTY

CALIFORNIA

WITH

Biographical Sketches

OF

*The Leading Men and Women of the County Who
have been Identified with its Growth and
Development from the Early
Days to the Present*



HISTORY BY
SAMUEL ARMOR

ILLUSTRATED
COMPLETE IN ONE VOLUME

HISTORIC RECORD COMPANY
LOS ANGELES, CALIFORNIA

1921

CITY BUSINESS EXPENSES AND SALARY OF CHARLES C. KINSLER

DURING HIS TIME AS BREA CITY CLERK AND RECORDER

1917 - 1918

June 27, 1917.....	\$2.59	supplies
Sept. 5, 1917.....	\$3.25	stamps, mailing notices
Oct. 3, 1917.....	\$8.50	extra help
Nov. 7, 1917.....	\$2.60	office supplies and postage
.....	\$320.00	salary
Dec. 5, 1917.....	\$40.00	salary for Nov.
Jan. 2, 1918.....	\$40.00	salary City Clerk and Recorder
Feb. 6, 1918.....	\$1.29	office supplies
Mar. 6, 1918.....	\$40.00	salary for February
Apr. 3, 1918.....	\$40.00	salary month of March
.....	\$6.46	stamps, mailing notices
May 1, 1918.....	\$23.50	(no reason given for this expenditure or income)

Orange County Central Labor Council

Tel. (714) 532-1570
(714) 836-2156

FAX (714) 532-1397

Contact Sandra Gonzales-Castro

~~Boss~~
Director

Linda Sanchez-Valentine

Linda-Sanchez-Valentine
Exe. Sec. Secretary/Treasurer
Rick Iden - President

“

IBEW Local 441

Orange 309 N. Rampart
Chapman

by 5 freeway

hotel on corner

Maria Elena
D.O.

AFFIDAVIT OF CENSUS TAKER.

STATE OF CALIFORNIA)

SS.

COUNTY OF ORANGE)

Charles C. Kinsler, being first duly sworn,
deposes and says:

That he is a resident of the town of Brea,
County of Orange, State of California, and that he was
on the 21st day of November, 1916, appointed by the
Board of Supervisors of the County of Orange, State of
California, to take the census of the territory embraced
within the boundaries of sections eleven (11) and that part
of section fourteen (14) not situate within the City of
Fullerton;

That he is familiar with the boundary lines of
said territory and has taken the census of the inhabitants
residing within said limits;

That the persons whose names are set forth on the
pages hereto attached are each of them a resident
and inhabitant within the boundaries of the territory
above set forth.

Charles C. Kinsler

Subscribed and sworn to before me this

27th day of November, 1916.



W.B. Williams
Notary Public

Thanksgiving Day In Brea's Early History

OBSERVANCES WERE HEARTFELT IN PIONEER DAYS OF BREA

First day Thanksgiving Day observances here in Brea, while heartfelt and typical to the greatest degree possible, were far different than they exist today, this develops from a review, made by The Progress, to learn, if possible, from several first day citizens here, just what happened on those first Thanksgivings.

There were no football games to speak of, to distract the attention of the first citizens, but there was opportunity for family gatherings, turkey dinners and a genuine celebration of the occasion. The Progress herewith presents several views of that period.

"Our first Thanksgiving Day in Brea was in 1913," Mrs. Eda Hurst remembers. "At that time we were making our home at the Brea hotel, which was then operated by Charles Kinsler.

"It was some time after that we built our residence on its present location. the Christian and Congregational churches had been organized, with the latter's building located where the Oilfield's national Bank is now.

"Pomona avenue was nothing but a dirt road, which made travel and traffic bad and very difficult during bad weather periods. Ed Peterkin owned the meat market, and the Salveson grocery was at the corner of Ash and Pomona.

"We didn't have guests at dinner that first Thanksgiving Day in 1913, but instead we went into Los Angeles, where instead we were the guests of friends at a regular turkey dinner.

Was A Santa Ana

A stiff santa ana was blowing on Thanksgiving day in 1912, Harry Ray remembers. He was here at the time in a general store and went to Fullerton on that day to eat a turkey dinner with some friends.

"I think that was about the stiffest santa ana I have seen in this country," Ray remembers. "And it was so deucedly hot that it was almost unbearable, when I remember that the strong wind was mixing a lot of sand and dirt with the heat.

"There wasn't much in Brea at that time and the wind had a clean sweep everywhere and in all directions. That's twenty-six years ago, remember.

"The whole town of Brea, or what there was of it, closed down tight for Thanksgiving, including even 'Doc' Hogg's drug store. There were only four business buildings between Ash and Birch streets on Pomona avenue then. One of these was a big, wide frame structure where the Sewell block now stands. There were four rooms in it, but only one was then occupied. In that Enoch & Cowden had a pool hall. In that hall I recall also that there was a turkey raffle that Thanksgiving eve.

"All the oil leases, round about here, closed down as tightly as they could for the observance of the day. Of course, it was necessary to leave a few men in charge, but the most of them were given the day off.

"South from Birch street there were five business buildings then, one of them being Ed Peterkin's meat market. Across the street from the pool hall, which I mentioned above, was the Brea garage, a frame building. The next year a Mr. Long came here and built the rooming house, now owned by J.N. Stanger.

"There are not many people here now, who were in Brea on that 1912 Thanksgiving Day, but I do remember Mr. and Mrs. Walter Yates, and Ed Peterkins, Bill Culp, who had just arrived, the Kinslers, the T.E. Moores and the Yriartes. Of course, going to Fullerton that day to eat Thanksgiving dinner, I drove down in horse and buggy style.

FIRST CHURCH MEETINGS WERE IN A TENT ON ORANGE

Mr. and Mrs. Walter B. Yates, who are given credit with building the first residence in Brea, came in the late autumn of 1911 but observed their first Thanksgiving Day here a year later.

"The first church meetings here," said Mrs. Yates, "were held in a tent that was placed on Orange avenue across the street from where our house was built. Although the tent was there for several months prior to Thanksgiving, there were no services held there on that occasion.

"The majority of the people here at that time not only went to church in that tent, but most of the homes also were tents, placed here in various localities. Our home was built on Orange avenue in 1912.

"We had a genuine Thanksgiving dinner in our home in 1912, and we had guests, too. they includes Mrs. and Mrs. N.B. Wheeler, Miss Ruth Wheeler, Miss Annie Yates and Ray Wheeler. Turkey for the dinner was furnished by Miss Yates, who had won it on a raffle that was conducted at the local pool hall."

Living in Tent—

Ed Peterkin remembers well that he and Mrs. Peterkin and 3-year old Ralph were living in a tent, back of where the Progress offices is now located (205 S. Pomona), on their first Thanksgiving Day here in 1911.

"We had come to Brea on September 17, 1911," says Mr. Peterkin. "Of course there was no house as yet, in which to live, so we put up a tent. We were then building a barn on the back of the lot, where the Oilfields National bank is now located. After the barn was completed, we lived in it until a house was completed also, on the site of the present Progress office.

"We didn't eat dinner on that first Thanksgiving Day in Brea, but we went down to Fullerton to have such a dinner with friends. We had been living three years in Fullerton, prior to coming here. Prior to that I had a meat market in Orange.

"We cooked in the tent also, where we had a wood stove. On thing I remember well was that the fogs were unusually heavy that autumn, and every morning when we got up, everything around the tent was wet with heavy fog."

The tent living is still impressed on Mrs. Peterkin because of an incident that occurred there. The meat market building had been completed on the site of the Oilfield National, and a telephone had been installed.

One day Mrs. Peterkin was called to the telephone, leaving Ralph alone in the tent; he was playing with the fire and got some coals out on the wood and a sack of coal beside the stove. He ran into the market and called to his mother that "The barn's on fire."

Ed Peterkin ran to the tent, grabbed the sack of coal, which was on fire, and dragged it outside. There was no water, with which to fight a fire, so he took the quilt off the bed to smother out the flames and save the other tent contents.

The La Habra water company had run a pipeline to the lot, where Paul Barber's agency is now located, and it was necessary to carry all water across the street from there.

Had A Family Dinner

Mrs. A. B. Bowie recalls that their first Thanksgiving Day in Brea was not until 1920, but she does remember that the Nazarene church had then been built five years earlier. In July of the ensuing year the church will celebrate its twenty-fifth anniversary here.

On that first Thanksgiving Day for the Bowies, however, they had a genuine Thanksgiving dinner and the others present being Miss Della Bowie, Herman Bowie, Harry Rogers and Willard Moss.

**Brea Progress
December 22, 1937**

Christmas Observances In Brea's Early Day History

MRS. MITCHELL, MRS. KINSLER AND MRS. HARKEY WERE EARLY BREANS

There were no Christmas observances to speak of, when Brea was really young, according to Mrs. Stella Mitchell, Mrs. Lena Kinsler, Mrs. Mittie Harkey and T. E. Moore, first-day citizens, who are still living here. They date back, as a rule, to 1911, when everything was very new, with the oil development starting in full blast, with streets of dust or mud, according to the weather, and with numerous homes being built.

The experience of living in such a new town were (sic) new to the most of the first-day families, too, although some of them had lived in other oil producing areas, prior to coming here.

The story is told that had the citizens of Fullerton not been so set against any industry coming into their city, there would have been no Brea. To make a place for their men to live, the oil producers established Brea as an industrial center, and today it is one of the outstanding industrial centers of all Southern California. It is said that Fullerton people wanted to be a high-hat town, without industries.

It has now been thirty-six years (sic) since Stella Mitchell of 133 South Madrona avenue came to Brea and with her family observed their first Christmas in this city. The Mitchells had arrived in Brea on November 10 of that year and consequently had been here only about six weeks when Christmas arrived also for that year.

The Town Was Known as Randolph

"Our first Christmas in Brea was in 1911," says T.E. Moore, one of the fine citizens of Brea continuously since those first days. "At that time the town was known as Randolph. My brother-in-law, A.R. Bradshaw, and I started to work for the Birch Oil company in May, 1911. Birch's Well No. 5 had just come in and was the largest producing well thus far in this district.

"At that time there were no houses in town. The only buildings being the school house, now the Union Oil company office building, the Pacific Electric station, and the power house. So we lived in a tent house on the Birch lease until the middle of November. The lots on the townsite were offered for sale in the summer. We bought a lot and built a small house at 208 South Madrona avenue, which we enlarged later.

"As soon as the walls were up and part of the roof on, we moved in as it was rather cold living in a tent. The first night we could look up and see the stars, where the roof was not all on. A few days later we had a *santa ana*. As the doors and windows were only tacked in, when I came home from the work, the wife had braced them up with boxes and boards to keep them from blowing in.

"We had several *santa anas* that season, and they usually lasted two or three days,

Only One Grocery

"The only grocery store in town was Sig. Salvesson's on the corner of Ash and Pomona, now a vacant lot. J.P. Huffman had a grocery store about a quarter of a mile north of Central avenue on Brea canyon road.

"That first Christmas there wasn't any church in Brea, the Nazarenes were the first to hold services in Randolph or Brea. Their services were held in the school building. The Congregationalists started later, having Sunday school in the south room of the old Sewell building, which later burned. The Catholics held mass there early in the morning, then the Congregationalists Sunday school later in the morning, and frequently a dance would be held in the same room in the evening.

"That first Christmas there were hardly a dozen families in Randolph. Ed Peterkin had a butcher shop where the Oilfields National Bank now stands. His house and shop were the only buildings in that block. We had only vacant lots his place and ours on Madrona. Mrs. Mittie Harkey lived in the same place she does today. Roy Mitchell and wife, James Tallman and family, and Frank buell and wife lived in the one hundred block on Madrona. Charles Kinsler and family, Walter Yates and family, and the Yriarties were some of the early settlers of Randolph.

"That first Christmas there wasn't a postoffice in town. If we wanted to send any mail, we had to sit on the curb on Pomona and wait until the postman came from Fullerton. At that time we didn't have any paved roads only a dirt road to Fullerton, and sometimes the roads were pretty bad. If we wanted to get to town, we had to get a horse and buggy at Huffman's livery stable up Brea canyon, or else walk. In fact, it was easier to get to Los Angeles than to Fullerton. The only sidewalks in town were on Pomona avenue."

SOME FACTS ABOUT CHARLES C. KINSLER

1. He was born in Otto, Cattaraugus County, N. Y. on January 4, 1878, the son of James and Ada (Deming) Kinsler.
2. His childhood was spent in the town of Bradford, McLean County, Pa. There he worked for the J. T. Jones Oil Company, of Bradford.
3. As a result of the outbreak of the Spanish-American War, Charles enlisted in the army, joining the Thirteenth Infantry Regiment. Fighting alongside Teddy Roosevelt on San Juan Hill, he was wounded in the left leg above the knee in July 1898 and was forced to spend the night on the battlefield. The consequent exposure and loss of blood is said to have affected his heart.
4. After discharge from the army, he came to California in approximately December 1899 and worked for about a year in the employ of the Olinda Oil and Land Company.
5. He then moved to Whittier and was employed by the Home Oil Company.
6. In 1901 Charles went to work at the State Reform School in Whittier. There he remained until May 1906. During that period he served as major and drillmaster.
7. In 1903 he was selected to drive a ceremonial spike during the festivities when the Pacific Electric Railway (the Red Cars) reached Whittier from Los Angeles.
8. On June 10, 1904 in Barre, Vt. he married Lena Morse of that town.
9. In May 1906 he moved with his wife Lena to the Puente Oil Lease in the Puente Hills where they lived and he worked.
10. Their first child, Thelma, was born on Oct. 19, 1906. Arlene Kinsler was born May 18, 1907 and Mildred on Sept. 25, 1910.
11. In 1911 he built the first house on S. Orange Ave., it being at 135 S. Orange. A year later he built the home next door, at 129 S. Orange, where he lived with his family until his death in 1934.
12. The Brea Hotel belonged to him or was leased by him from approximately 1914 to 1917. During this time it was called the Kinsler Hotel.
13. Charles was the first secretary of the newly-formed Brea Chamber of Commerce.
14. He was a very early member of the Brea School Board.
15. In 1916 he headed Brea's drive for incorporation. On November 21, 1916 he was appointed by the Board of Supervisors of Orange County to conduct a census of Brea to see if it could qualify for incorporation. We had to have at least 500 residents, and the

census found that we had 732.

16. Charles was elected as Brea's first City Clerk in 1917.
17. He was selected by the city's Board of Trustees (City Council) to be Brea's first City Recorder on April 25, 1917.
18. He worked as a Brea real estate and insurance salesman from 1917 until his death in 1934.
19. From 1917 to 1923 he served as secretary of the Brea Oil Workers' Union.
20. A charter member of Brea's Citrol Masonic Lodge No. 656 in 1917, Charles was its first secretary and continued in that capacity until he died.
21. He was Brea's notary public.
22. In 1920 he was chosen president of the newly-formed Orange County Central Labor Council. He remained president until 1923, being elected three times.
23. In 1922 Charles and Lena adopted Ralph Leland Winchell, changing his name to Leland Charles Kinsler.
24. The Board of Trustees (City Council) appointed Charles City Recorder on May 9, 1924.
25. Arlene Kinsler died on March 24, 1925. She was buried at Loma Vista Cemetery in Fullerton.
26. On May 2, 1928 Charles was named City Judge of Brea.
27. An active member of the Imperial Highway Association, he worked to bring the highway through Brea.
28. As of 1931, he belonged to the Citrol Lodge, F. & A. M., at Brea; Fullerton Chapter, R. A. M.; Fullerton Commandery, K. T.; Al Malaikah Temple, A. A. O. N. M. S., at Los Angeles; Brea Lodge, K. P.; Anaheim Lodge, B. P. O. E.; Ontario Lodge, D. O. O. K.; the Modern Woodmen of America; the United Spanish War Veterans at Fullerton; and the Ancient Egyptian Order of Sciots at Fullerton.
29. Selected Brea's Fire Chief in January 1932.
30. Chairman, Boy Scouts of America, Brea Branch. He also was a member the County Executive Committee of the Boy Scouts.
31. Charles died at his home on July 11, 1934 of heart trouble. The mayor at the time, L. A. Hogue, issued a proclamation that appeared on the front page of the Brea Progress honoring Charles and closing all Brea businesses for two hours during his funeral. He was buried at Loma Vista Cemetery next to his daughter Arlene.
32. Lena Kinsler died May 26, 1976. Burial was at Loma Vista Cemetery.

No. _____ July 1 - 1932
Received of Chas. C. Knisen -
Five hundred fifty-one ⁰⁰/₁₀₀ Dollars
Fines for June - 1932 -
Traffic - 95.00 Liquor 456.00
\$ 551.00 Grace L. May, Clerk -

No. _____ July 1 - 1932
Received of Chas. C. Knisen
Ten and ⁰⁰/₁₀₀ _____ Dollars
Payment on cash stolen from
safe - (Liquor fine) -
\$ 10.00 Grace L. May, Clerk -

No. _____ June 1st - 1932
 Received of Chas. C. Kinsler
 Three hundred forty-eight ⁰⁰/₁₀₀ Dollars
 Fine for month of May - 1932 -
 Traffic - 148.50 - Liquor - 200.00
 \$ $\begin{array}{r} 148.50 \\ 200.00 \\ \hline 348.50 \end{array}$ Chas L. May, Clerk

No. _____ June 1st - 1932
 Received of Chas. C. Kinsler
 Ten and ⁰⁰/₁₀₀ _____ Dollars
 Payment #1 - on money stole
 out of office
 \$ $\begin{array}{r} 181.00 \\ 10.00 \\ \hline 171.00 \end{array}$ Chas L. May, Clerk

No. _____ Aug 1 1932
Received of Chas. C. Kinsler
Two hundred and twenty-two Dollars.
Traffic fines - 117.80
Liquor fines - 105.00
\$ 222.00 M. A. Glazier
Deputy

No. _____ 193
Received of Charles C. Kinsler
Ten and no/100 Dollars
Liquor fines
Refund on costs taken from
\$ 10.00 M. A. Glazier
Deputy

Fullerton Chapter, R. A. M.; Fullerton Commandery, K. T.; Al Malaikah Temple, A. A. O. N. M. S., at Los Angeles; Brea Lodge, K. P.; Anaheim Lodge, B. P. O. E.; Ontario Lodge, D. O. O. K.; the Modern Woodmen of America; the United Spanish War Veterans at Fullerton; and the Ancient Egyptian Order of Sciots at Fullerton.

29. Selected Brea's Fire Chief in January 1932.
30. Chairman, Boy Scouts of America, Brea Branch. He also was a member the County Executive Committee of the Boy Scouts.
31. Charles died at his home on July 11, 1934 of heart trouble. The mayor at the time, L. A. Hogue, issued a proclamation that appeared on the front page of the Brea Progress honoring Charles and closing all Brea businesses for two hours during his funeral. He was buried at Loma Vista Cemetery next to his daughter Arlene.
32. Lena Kinsler died May 26, 1976. Burial was at Loma Vista Cemetery.

Fullerton Chapter, R. A. M.; Fullerton Commandery, K. T.; Al Malaikah Temple, A. A. O. N. M. S., at Los Angeles; Brea Lodge, K. P.; Anaheim Lodge, B. P. O. E.; Ontario Lodge, D. O. O. K.; the Modern Woodmen of America; the United Spanish War Veterans at Fullerton; and the Ancient Egyptian Order of Sciots at Fullerton.

29. Selected Brea's Fire Chief in January 1932.
30. Chairman, Boy Scouts of America, Brea Branch. He also was a member the County Executive Committee of the Boy Scouts.
31. Charles died at his home on July 11, 1934 of heart trouble. The mayor at the time, L. A. Hogue, issued a proclamation that appeared on the front page of the Brea Progress honoring Charles and closing all Brea businesses for two hours during his funeral. He was buried at Loma Vista Cemetery next to his daughter Arlene.
32. Lena Kinsler died May 26, 1976. Burial was at Loma Vista Cemetery.

SOME FACTS ABOUT CHARLES C. KINSLER

1. He was born in Otto, Cattaraugus County, N. Y. on January 4, 1878, the son of James and Ada (Deming) Kinsler.
2. His childhood was spent in the town of Bradford, McLean County, Pa. There he worked for the J. T. Jones Oil Company, of Bradford.
3. As a result of the outbreak of the Spanish-American War, Charles enlisted in the army, joining the Thirteenth Infantry Regiment. Fighting alongside Teddy Roosevelt on San Juan Hill, he was wounded in the left leg above the knee in July 1898 and was forced to spend the night on the battlefield. The consequent exposure and loss of blood is said to have affected his heart.
4. After discharge from the army, he came to California in approximately December 1899 and worked for about a year in the employ of the Olinda Oil and Land Company.
5. He then moved to Whittier and was employed by the Home Oil Company.
6. In 1901 Charles went to work at the State Reform School in Whittier. There he remained until May 1906. During that period he served as major and drillmaster.
7. In 1903 he was selected to drive a ceremonial spike during the festivities when the Pacific Electric Railway (the Red Cars) reached Whittier from Los Angeles.
8. On June 10, 1904 in Barre, Vt. he married Lena Morse of that town.
9. In May 1906 he moved with his wife Lena to the Puente Oil Lease in the Puente Hills where they lived and he worked.
10. Their first child, Thelma, was born on Oct. 19, 1906. Arlene Kinsler was born May 18, 1907 and Mildred on Sept. 25, 1910.

SOME FACTS ABOUT CHARLES C. KINSLER

1. He was born in Otto, Cattaraugus County, N. Y. on January 4, 1878, the son of James and Ada (Deming) Kinsler.
2. His childhood was spent in the town of Bradford, McLean County, Pa. There he worked for the J. T. Jones Oil Company, of Bradford.
3. As a result of the outbreak of the Spanish-American War, Charles enlisted in the army, joining the Thirteenth Infantry Regiment. Fighting alongside Teddy Roosevelt on San Juan Hill, he was wounded in the left leg above the knee in July 1898 and was forced to spend the night on the battlefield. The consequent exposure and loss of blood is said to have affected his heart.
4. After discharge from the army, he came to California in approximately December 1899 and worked for about a year in the employ of the Olinda Oil and Land Company.
5. He then moved to Whittier and was employed by the Home Oil Company.
6. In 1901 Charles went to work at the State Reform School in Whittier. There he remained until May 1906. During that period he served as major and drillmaster.
7. In 1903 he was selected to drive a ceremonial spike during the festivities when the Pacific Electric Railway (the Red Cars) reached Whittier from Los Angeles.
8. On June 10, 1904 in Barre, Vt. he married Lena Morse of that town.
9. In May 1906 he moved with his wife Lena to the Puente Oil Lease in the Puente Hills where they lived and he worked.
10. Their first child, Thelma, was born on Oct. 19, 1906. Arlene Kinsler was born May 18, 1907 and Mildred on Sept. 25, 1910.

11. In 1911 he built the first house on S. Orange Ave., it being at 135 S. Orange. A year later he built the home next door, at 129 S. Orange, where he lived with his family until his death in 1934.
12. The Brea Hotel belonged to him or was leased by him from approximately 1914 to 1917. During this time it was called the Kinsler Hotel.
13. Charles was the first secretary of the newly-formed Brea Chamber of Commerce.
14. He was a very early member of the Brea School Board.
15. In 1916 he headed Brea's drive for incorporation. On November 21, 1916 he was appointed by the Board of Supervisors of Orange County to conduct a census of Brea to see if it could qualify for incorporation. We had to have at least 500 residents, and the census found that we had 732.
16. Charles was elected as Brea's first City Clerk in 1917.
17. He was selected by the city's Board of Trustees (City Council) to be Brea's first City Recorder on April 25, 1917.
18. He worked as a Brea real estate and insurance salesman from 1917 until his death in 1934.
19. From 1917 to 1923 he served as secretary of the Brea Oil Workers' Union.
20. A charter member of Brea's Citrol Masonic Lodge No. 656 in 1917, Charles was its first secretary and continued in that capacity until he died.
21. He was Brea's notary public.
22. In 1920 he was chosen president of the newly-formed Orange County Central Labor Council. He remained president until 1923, being elected three times.
23. In 1922 Charles and Lena adopted Ralph Leland Winchell, changing his name to Leland Charles Kinsler.
24. The Board of Trustees (City Council) appointed Charles City Recorder on May 9, 1924.
25. Arlene Kinsler died on March 24, 1925. She was buried at Loma Vista Cemetery in Fullerton.
26. On May 2, 1928 Charles was named City Judge of Brea.
27. An active member of the Imperial Highway Association, he worked to bring the highway through Brea.
28. As of 1931, he belonged to the Citrol Lodge, F. & A. M., at Brea;

11. In 1911 he built the first house on S. Orange Ave., it being at 135 S. Orange. A year later he built the home next door, at 129 S. Orange, where he lived with his family until his death in 1934.
12. The Brea Hotel belonged to him or was leased by him from approximately 1914 to 1917. During this time it was called the Kinsler Hotel.
13. Charles was the first secretary of the newly-formed Brea Chamber of Commerce.
14. He was a very early member of the Brea School Board.
15. In 1916 he headed Brea's drive for incorporation. On November 21, 1916 he was appointed by the Board of Supervisors of Orange County to conduct a census of Brea to see if it could qualify for incorporation. We had to have at least 500 residents, and the census found that we had 732.
16. Charles was elected as Brea's first City Clerk in 1917.
17. He was selected by the city's Board of Trustees (City Council) to be Brea's first City Recorder on April 25, 1917.
18. He worked as a Brea real estate and insurance salesman from 1917 until his death in 1934.
19. From 1917 to 1923 he served as secretary of the Brea Oil Workers' Union.
20. A charter member of Brea's Citrol Masonic Lodge No. 656 in 1917, Charles was its first secretary and continued in that capacity until he died.
21. He was Brea's notary public.
22. In 1920 he was chosen president of the newly-formed Orange County Central Labor Council. He remained president until 1923, being elected three times.
23. In 1922 Charles and Lena adopted Ralph Leland Winchell, changing his name to Leland Charles Kinsler.
24. The Board of Trustees (City Council) appointed Charles City Recorder on May 9, 1924.
25. Arlene Kinsler died on March 24, 1925. She was buried at Loma Vista Cemetery in Fullerton.
26. On May 2, 1928 Charles was named City Judge of Brea.
27. An active member of the Imperial Highway Association, he worked to bring the highway through Brea.
28. As of 1931, he belonged to the Citrol Lodge, F. & A. M., at Brea;

SOME FACTS ABOUT CHARLES C. KINSLER

1. He was born in Otto, Cattaraugus County, N. Y. on January 4, 1878, the son of James and Ada (Deming) Kinsler.
2. His childhood was spent in the town of Bradford, McLean County, Pa. There he worked for the J. T. Jones Oil Company, of Bradford.
3. As a result of the outbreak of the Spanish-American War, Charles enlisted in the army, joining the Thirteenth Infantry Regiment. Fighting alongside Teddy Roosevelt on San Juan Hill, he was wounded in the left leg above the knee in July 1898 and was forced to spend the night on the battlefield. The consequent exposure and loss of blood is said to have affected his heart.
4. After discharge from the army, he came to California in approximately December 1899 and worked for about a year in the employ of the Olinda Oil and Land Company.
5. He then moved to Whittier and was employed by the Home Oil Company.
6. In 1901 Charles went to work at the State Reform School in Whittier. There he remained until May 1906. During that period he served as major and drillmaster.
7. In 1903 he was selected to drive a ceremonial spike during the festivities when the Pacific Electric Railway (the Red Cars) reached Whittier from Los Angeles.
8. On June 10, 1904 in Barre, Vt. he married Lena Morse of that town.
9. In May 1906 he moved with his wife Lena to the Puente Oil Lease in the Puente Hills where they lived and he worked.
10. Their first child, Thelma, was born on Oct. 19, 1906. Arlene Kinsler was born May 18, 1907 and Mildred on Sept. 25, 1910.

11. In 1911 he built the first house on S. Orange Ave., it being at 135 S. Orange. A year later he built the home next door, at 129 S. Orange, where he lived with his family until his death in 1934.
12. The Brea Hotel belonged to him or was leased by him from approximately 1914 to 1917. During this time it was called the Kinsler Hotel.
13. Charles was the first secretary of the newly-formed Brea Chamber of Commerce.
14. He was a very early member of the Brea School Board.
15. In 1916 he headed Brea's drive for incorporation. On November 21, 1916 he was appointed by the Board of Supervisors of Orange County to conduct a census of Brea to see if it could qualify for incorporation. We had to have at least 500 residents, and the census found that we had 732.
16. Charles was elected as Brea's first City Clerk in 1917.
17. He was selected by the city's Board of Trustees (City Council) to be Brea's first City Recorder on April 25, 1917.
18. He worked as a Brea real estate and insurance salesman from 1917 until his death in 1934.
19. From 1917 to 1923 he served as secretary of the Brea Oil Workers' Union.
20. A charter member of Brea's Citrol Masonic Lodge No. 656 in 1917, Charles was its first secretary and continued in that capacity until he died.
21. He was Brea's notary public.
22. In 1920 he was chosen president of the newly-formed Orange County Central Labor Council. He remained president until 1923, being elected three times.
23. In 1922 Charles and Lena adopted Ralph Leland Winchell, changing his name to Leland Charles Kinsler.
24. The Board of Trustees (City Council) appointed Charles City Recorder on May 9, 1924.
25. Arlene Kinsler died on March 24, 1925. She was buried at Loma Vista Cemetery in Fullerton.
26. On May 2, 1928 Charles was named City Judge of Brea.
27. An active member of the Imperial Highway Association, he worked to bring the highway through Brea.
28. As of 1931, he belonged to the Citrol Lodge, F. & A. M., at Brea;

Fullerton Chapter, R. A. M.; Fullerton Commandery, K. T.; Al Malaikah Temple, A. A. O. N. M. S., at Los Angeles; Brea Lodge, K. P.; Anaheim Lodge, B. P. O. E.; Ontario Lodge, D. O. O. K.; the Modern Woodmen of America; the United Spanish War Veterans at Fullerton; and the Ancient Egyptian Order of Sciots at Fullerton.

29. Selected Brea's Fire Chief in January 1932.
30. Chairman, Boy Scouts of America, Brea Branch. He also was a member the County Executive Committee of the Boy Scouts.
31. Charles died at his home on July 11, 1934 of heart trouble. The mayor at the time, L. A. Hogue, issued a proclamation that appeared on the front page of the Brea Progress honoring Charles and closing all Brea businesses for two hours during his funeral. He was buried at Loma Vista Cemetery next to his daughter Arlene.
32. Lena Kinsler died May 26, 1976. Burial was at Loma Vista Cemetery.

1926

Thayer, Mrs. Harry E.
 Russell, Mrs. Ada K.

reader
 housewife

Brea 215 S. Orange
 Brea 111 N. Orange

1928

Russell, Mrs. Ada K.
 Thayer, Mrs. Mary E.

housewife
 housewife

Brea 111 N. Orange
 Brea 215 S. Orange

1930

Thayer, Mrs. Harry E.
 Thayer, Maynard C.
 Russell, Mrs. Ada K.

housewife Declines
 oil worker Republ.
 housewife Republ.

Brea 215 S. Orange
 Brea 111 N. Orange
 Brea 111 N. Orange

1932

Thayer, Perry J.
 Thayer, Maynard C.
 Thayer, Mrs. Harry

oil worker Republ.
 oil worker Democr.
 housewife Republ.

Brea 111 N. Orange
 Brea 111 N. Orange
 Brea 215 S. Orange

1934

Thayer, Perry J.
 (Mary not listed)

oil worker Republ.

Brea 111 N. Orange

1936

Thayer, Mrs. Harry E.
 Thayer, Perry J.

housewife Democr.
 oil worker Republ.

Brea 215 S. Orange
 Brea 212 E. Date

INDEX TO THE GREAT REGISTER OF ORANGE COUNTY
(Voter Registration)

HARRY H. and MARY E. THAYER

(Mary is the sister of Charles C. Kinsler)

OLINDA PRECINCT

1904
Thayer, Harry H. 29 laborer Fullerton R.D.2

1906
Thayer, Harry Humphrey 31 Fullerton R.D.2

1908
Thayer, Harry 33 well puller

1910
Thayer, Harry H. 35 oil man Republ.

(In 1911 women in California were given the right to vote)

1912
Thayer, Harry H. foreman Republ.
Thayer, Mary E. housewife Republ.
Kinsler, Ada E. retired Republ.

1914
Thayer, Harry H. foreman Republ. Fullerton R.F.D.2
Thayer, Mrs. Mary E. housewife Democr. Fullerton R.F.D.2

1916
Thayer, Harry H. foreman Fullerton R.D.2
Thayer, Mary E. housewife Fullerton R.D.2

1918
Thayer, Harry H. foreman Fullerton R.D.2
Thayer, Mary E. housewife Fullerton R.D.2

BREA PRECINCT NO. 2

1920
Thayer, Mrs. Mary E. landlady Brea
Thayer, Harry oil man Brea

1922
Thayer, Mrs. Harry E. landlady Brea
(Harry not listed)

1924
Thayer, Mrs. Mary housewife Brea Box 483
Russell, Mrs. Ada K. housewife Brea

COUNTERSIGNED BY
Grace L. May
CITY CLERK

IN PAYMENT OF ACCOUNTS	AMOUNTS
<i>Sal</i>	

CITY OF BREA
GENERAL FUND

No. 2171

BREA, CALIFORNIA *Nov. 1* 19 *32*

PAY TO THE ORDER OF *Chas. C. Kinsler* - \$ *50.00* $\frac{00}{100}$

Fifty and no/100 dollars

To THE OILFIELDS NATIONAL BANK
90-1181 BREA, CALIFORNIA

BY *[Signature]* CITY OF BREA
BY *[Signature]* TREASURER
PRESIDENT OF BOARD OF TRUSTEES

248720 PAT'D-1908-RECORDED-N.Y.

IN PAYMENT OF ACCOUNTS	AMOUNTS
<i>Five -</i>	
<i>Drill -</i>	

CITY OF BREA
GENERAL FUND

No. 36

Brea, California JUN 8 1933 193

Pay to the order of *Chas. C. Kinsler* - \$ *6.00*

Six and 00/100 Dollars

To The Oilfields National Bank
COMMERCIAL of Brea SAVINGS
90-1181 Brea, California

BY *[Signature]* TREASURER
BY *[Signature]* PRESIDENT OF BOARD OF TRUSTEES
COUNTERSIGNED BY *Grace L. May* CITY CLERK
SPECIAL ACCOUNT

THE UNION LITHO CO. LA

COUNTERSIGNED BY
Grace L. May
CITY CLERK

IN PAYMENT OF ACCOUNTS	AMOUNTS
<i>City Judge - Salary</i>	
<i>for July 1929</i>	
	<i>75⁰⁰</i>

CITY OF BREA
GENERAL FUND

No. **3**

BREA, CALIFORNIA *August 1* 19 *29*

PAY TO THE ORDER OF *C. C. Kinsler* \$ *75⁰⁰*

Seventy-five and 00/100 dollars

To THE OILFIELDS NATIONAL BANK
90-1181 BREA, CALIFORNIA

CITY OF BREA
BY *[Signature]* TREASURER
BY *[Signature]* PRESIDENT OF BOARD OF TRUSTEES

248780 PAYEE-TORR-REGISTERED-S-T

COUNTERSIGNED BY
Grace L. May
CITY CLERK

IN PAYMENT OF ACCOUNTS	AMOUNTS

CITY OF BREA
GENERAL FUND

No. **251**

BREA, CALIFORNIA *November 7th* 19 *29*

PAY TO THE ORDER OF *C. C. Kinsler for Brea Fire Department* \$ *72.00*

Seventy-two and 00/100 -----Dollars

To THE OILFIELDS NATIONAL BANK
90-1181 BREA, CALIFORNIA

CITY OF BREA
BY *[Signature]* TREASURER
BY *[Signature]* PRESIDENT OF BOARD OF TRUSTEES

248780 PAYEE-TORR-REGISTERED-S-T

1937

Kinsler, Lena (wid CC) h 129 S Orange, Brea
Kinsler, Mildred ins 133 S Orange r 129 same, Brea

1938

Kinsler, Lena I Mrs h 129 S Orange, Brea
Kinsler, Mildred A ins 133 S Orange r 129 same, Brea

1939

Kinsler, Leland C r 129 S Orange, Brea
Kinsler, Lena I Mrs h 129 S Orange, Brea
Kinsler, Mildred A real est r 129 S Orange, Brea

1940

Kinsler, Leland C mach r 129 S Orange, Brea
Kinsler, Lena I Mrs h 129 S Orange, Brea
Kinsler, Mildred A ins 129 S Orange, Brea

1941

Kinsler, Leland C mach r 129 S Orange, Brea
Kinsler, Lena I h 129 S Orange, Brea
Kinsler, Mildred A ins 129 S Orange, Brea

1945

Kinsler, Leland C USN r 129 S Orange, Brea
Kinsler, Lena (wid CC) h 129 S Orange, Brea
Kinsler, Marjorie V teller Bank of Am r 827 Stephens, Fullerton

1947

Kinsler, L C (Margie) h rear 12871 Wmtr, Santa Ana

1948

Kinsler, Lena (wid CC) r 129 S Orange, Brea
Kinsler, Marjorie V Mrs escrow clk B of A h 243 1/2 S Madrona, Brea

NOTE: In the entry for 1914, Kinslar was so spelled in the directory.

NOTE: In 1938 there is also the following listing:

Kinsler, Lily waitress h 318 E Center, Anaheim

(The listing only appeared in the directory for that one year. I don't know if Lily is related to C. C. Kinsler)

1927

KINSLER, Chas C (Lena I) real estate and insurance 130 S Pomona sec
Chamber of Commerce h 129 S Orange, Brea

1928

KINSLER, Chas C (Lena I) real estate and insurance 130 S Pomona sec
Chamber of Commerce h 129 S Orange, Brea

Kinsler, Mildred r 129 S Orange, Brea

1929

KINSLER, CHAS C (Lena I) real estate and insurance 203 1/2 S Pomona
av, h 129 S Orange, Brea

Kinsler, Mildred steno C C Kinsler r 129 S Orange, Brea

1930

KINSLER, CHAS C (Lena) real estate and insurance 203 1/2 S Pomona av,
h 129 S Orange, Brea

Kinsler, Mildred steno C C Kinsler r 129 S Orange av, Brea

1931

KINSLER, CHAS C (Lena) Real Estate and Insurance 203 1/2 S Pomona av,
h 129 S Orange, Brea

Kinsler, Mildred steno r 129 S Orange, Brea

1932

KINSLER, CHAS C (Lena) Real Estate and Insurance 203 1/2 S Pomona av,
h 129 S Orange, Brea

Kinsler, Mildred steno r 129 S Orange, Brea

1933

KINSLER, CHAS C (Lena) Real Estate Loans and Insurance, 133 S. Orange
h 129 same, Brea

Kinsler, Mildred steno r 129 S Orange, Brea

1934

Kinsler, Lena (wid Chas C) h 129 S Orange, Brea

Kinsler, Mildred ins r 133 S Orange, Brea

1935

Kinsler, Lena (wid Chas C) h 129 S Orange, Brea

Kinsler, Mildred ins 133 S Orange r 129 same, Brea

1936

Kinsler, Lena (wid CC) h 129 S Orange, Brea

Kinsler, Mildred ins 133 S Orange r 129 same, Brea

REFERENCES TO CHARLES C. KINSLER AND FAMILY
IN ORANGE COUNTY BUSINESS DIRECTORIES
1914 - 1948

THURSTON'S DIRECTORY
North Orange County

1914

Kinslar, Ada Mrs., r Olinda, RD 2 Fullerton
Kinsler, Charles C, tool dresser h Brea RD 4, Fullerton

- - - - -

ANAHEIM FULLERTON AND NORTHERN ORANGE COUNTY DIRECTORY
Publisher - Klassen Directory Co., Anaheim, Ca.

1919-20

KINSLER, CHAS C (Lena I) Real Estate, Insurance, Rentals and Notary
Public 120 S. Pomona Av Phone 358 J1 h 129 S Orange Av

1922

KINSLER, CHAS C (Lena I) Sec and Agt Oil Workers Union
office 138 S Pomona Av h 129 S Orange, Brea

- - - - -

ORANGE COUNTY DIRECTORY
Publisher - Western Directory Co., Long Beach, Ca.

1924

Kinsler, Chas C (Lena) real est 129 S. Orange, Brea

1925

KINSLER, CHARLES C (Lena) real estate and insurance 129 S Orange,
Brea

KINSLER, Arlene L r 129 S Orange, Brea

KINSLER, Thelma M marceller r 129 S Orange, Brea

1926

Kinsler, Chas C (Lena I) real est h 129 S Orange, Brea
Kinsler, Thelma M beauty opr r 129 S Orange, Brea

RELATIONSHIP TO CHARLES C. KINSLER.....

Ada E. Kinsler.....mother
James Kinsler.....father
Arlene Kinsler.....daughter
Lena I. Kinsler.....wife
Mildred Kinsler.....daughter
Leland "Toad" Kinsler.....son (adopted)
Harry Thayer.....brother-in-law
Mary (Kinsler) Thayer.....sister
Maynard Thayer.....nephew
Perry Thayer.....nephew
Everett "Doc" Henderson.....son-in-law
Richard Henderson.....grandson
Thelma (Kinsler) Henderson.....daughter
Marjorie Kinsler.....daughter-in-law

Anaheim Fullerton and Northern Orange
County Directory
1919-1920

**LUMBER
AND
BUILDING
MATERIALS**



ANAHEIM
Vine St. Cor E. Bway
FULLERTON
124 W. Santa Fe Ave
PLACENTIA
108 S. Melrose

L. GOODRICH
Plumber

PLUMBI

15 W. COMMONWE

CLAS

BUENA PARK—
ALLEN, HATTIE

"THE COM
Mrs. E
Real
Orange and La

OFFICE—

LA HABRA
WESTER & YOU

L. J. WESTER

WES

ORCE
INSURAN

CENTRAL A

PLACENTIA—
Christensen & R.
YORBA LINDA—
WALKER, E. R.

NOTARY PU

E.

REAL
OFF.

RURAL—
HUNT, W. M.,
Phone 7613

COLE
AERO-EIGHT
OF

358 CLASSIFIED BUSINESS DIRECTORY

REAL ESTATE—Continued
PINSON, B. F., 217 N Spadra. (See adv).

Residence 623 No. Pomona

Phone 360R

B. F. Pinson

REAL ESTATE, INSURANCE AND LOANS

Office 217 No. Spadra — Phone 314

FULLERTON

PORTER & HINCKLEY, 114 E Comwlth. (See adv).

V. A. PORTER
Phone 195J

J. H. HINCKLEY
Phone 60

Porter & Hinckley

Licensed

ORANGE COUNTY LAND SPECIALISTS

PHONE 60

114 E. COMMONWEALTH

FULLERTON

Ruddock G A 118 N Spadra
Sutherland C R 114 S Spadra

BREA—
KINSLER, C. C., 120 S Pomona Av. (See adv).

PHONE 358J1

CHAS. C. KINSLER

Real Estate — Rentals

Insurance (Board Companies) Notary Public

120 S Pomona Ave.

BREA

McGEE, MABLE, City Hall.

DIRECTORY ADVERTISING PAYS.



ANAHEIM
IGNITION
DEPOT

A. Bevellard,
Proprietor

AUTOMOBILE
—And—
TRACTOR
ELECTRICIANS

STARTER,
GENERATOR
—And—
MAGNETO
REPAIRS

140-142
South
LOS ANGELES
Street

PHONE 489

Willard



SERVICE STATION

ORANGE COUNTY IGNITION WORKS

209 No. Spadra **FULLERTON** Phone 387
AUTOMOTIVE ELECTRICIANS

Copy

(Copy)

CITY COUNCILMEN

L. A. HOQUE, MAYOR
O. S. CLOSE
W. C. BALDWIN
FRANK SCHWEITZER
J. D. WAKEMAN

City of Brea

REGULAR MEETINGS FIRST AND THIRD WEDNESDAY NIGHTS
OF EACH MONTH

BILLS CONSIDERED ONLY FIRST REGULAR MEETINGS OF EACH MONTH

Brea, California

CITY OFFICERS

GRACE L. MAY, CLERK
WALKER C. DAVIS, TREASURER
ALBERT LAUNER, ATTORNEY
R. W. PHELPS, ENGINEER
W. H. WILLIAMS, CHIEF OF POLICE
C. C. KINSLER, CITY JUDGE
E. G. BOXALL, STREET AND
WATER DEPARTMENT

OFFICE OF
CITY JUDGE

State of California,) SS
County of Orange,)
City of Brea,)

I, Grace L. May, City Clerk and Ex-Officio
Clerk of the Board of Trustee's of the City of Brea, do hereby
certify that at a meeting of said Board held on the 20th day of
April, 1933, Charles C. Kinsler was appointed
City Judge and Fire Chief of the City of Brea, California.
for the term of two years, or until the pleasure of the Board
of Trustee's.

Grace L. May
City Clerk of the City of Brea, Calif.

* - - - - -

Oath of Office

State of California.)
County of Orange) SS.
City of Brea,)

I, Charles C. Kinsler do swear to support the
Constitution of the United States of America, the constitution of
the State of California, and to perform the duties imposed on me
as City Judge and Fire Chief, of the City of Brea, California,
to the best of my ability, so help me God.

Charles C. Kinsler
City Judge and Fire Chief.

Subscribed and sworn to before me

This 21st day of April, 1933.

Grace L. May
City Clerk of the City of Brea, Calif.

OILWORKERS' FLOAT MADE HIT IN PARADE

While the float entered by the Brea Oilworkers' Local did not win a prize it made a decided hit in the Los Angeles Labor Day Parade. The novelty and effectiveness of the float, displaying an oil well actually on the pump, quickly caught the crowd and the float was frequently cheered. Brea people who were in the parade were C. C. Kinsler and family, William Cameron, B. R. Smith, William Corbit, Body Smith and Harry Love.

BREA STAR - Sept. 3, 1919

Miss Loyd, the capable secretary of Chas. Kinsler, spent the weekend visiting in Los Angeles.

BREA PROGRESS Fri., Sept. 19, 1919

To San Fernando---

Mr. and Mrs. C. C. Kinsler of Brea and the latter's father, A. D. Morse of Venice, motored to San Fernando Valley Sunday.

BREA STAR - Mon., Sept. 22, 1919

Brea has a new resident. Charley Kinsler, who has been everywhere in California but home for the past few months, will now stick around for a while. And he feels pretty well satisfied with the work accomplished.

BREA PROGRESS - Fri., Sept. 26, 1919

"BLUES" TO FEAST WHILE "REDS" SERVE

A meeting of the "Reds," losers in the recent membership contest (of the Chamber of Commerce), was held Thursday night, and it was decided that since they must be the goats they would be the best goats. They decided that they would entertain the blues with a barbecue on Friday night, October 3.

The affair will be held in the lot where the tent is now located and the good time will start at 7 p.m. The big feature of the evening will be the big feed, but a fine program is to be arranged which will be made up of local talent. Announcements will be sent to all new members.

The following committees have been appointed to arrange for the affair:

...Pit and arrangements -- Kinsler...

BREA STAR - Fri., Sept. 26, 1919

CITY BUSINESS EXPENSES AND SALARY OF CHARLES C. KINSLER
DURING HIS TIME AS BREA CITY CLERK AND RECORDER
1917 - 1918

June 27, 1917.....	\$2.59	supplies
Sept. 5, 1917.....	\$3.25	stamps, mailing notices
Oct. 3, 1917.....	\$8.50	extra help
Nov. 7, 1917.....	\$2.60	office supplies and postage
.....	\$320.00	salary
Dec. 5, 1917.....	\$40.00	salary for Nov.
Jan. 2, 1918.....	\$40.00	salary City Clerk and Recorder
Feb. 6, 1918.....	\$1.29	office supplies
Mar. 6, 1918.....	\$40.00	salary for February
Apr. 3, 1918.....	\$40.00	salary month of March
.....	\$6.46	stamps, mailing notices
May 1, 1918.....	\$23.50	(no reason given for this expenditure or income)

City of Brea
Orange County
Calif.

Entered

Property Exemption Affidavit

For the purpose of securing the benefits of the exemption provided for in section 1 1/4 of article XIII of the Constitution of the State of California, the undersigned applicant hereby swears:

That he (or she) is a legal resident of 129 So Orange Ave street
in the city of BREA, in the County of ORANGE, State of California.

FOR VETERANS: That he served in the army—navy—marine corps—revenue service—of the United States.
Enlisted September 6th, 1897, Discharged November 14th, 1898.

FOR RELATIVES: That he (or she) bears the relationship of _____
to _____ whose dates of service are given above.

That this claimant has, or the person under whose service this claim for exemption is founded had, an honorable discharge from said service;

That all of the property in the annexed list is owned by the applicant—by the applicant's wife—by the applicant and his wife.

That the applicant and his wife—and her husband—have not made and will not make application similar to this in any other county in this state this year, except as follows: _____

_____ (also give county and county seat.)

That the applicant and his wife—and her husband—owns the following property on which he (or she) have not and will not ask exemption: _____

_____ (also give state, county and county seat where located.)

That the applicant and his wife—and her husband—own no property in the State of California or elsewhere, assessable or non-assessable, including real estate, personal property, stocks, bonds, mortgages, etc., except that described in the annexed list or lists given this year to other county assessors as aforesaid, and that neither the applicant nor his wife owns, nor do both together own, property in the State of California, or elsewhere, of the value of five thousand dollars or more.

Charles C. Kunkle

_____, Claimant

Subscribed and sworn to before me this 6th day of March, 1925

By *Grace L. May*
Notary Public. *aty Clerk*

Description of property in Orange County on which exemption is asked:

Lot eight (8) block (10) ten at 129 So Orange Ave.
City of Brea, Orange County, State of California.

AFFIDAVIT OF CENSUS TAKER.

STATE OF CALIFORNIA)

SS.

COUNTY OF ORANGE)

Charles C. Kinsler, being first duly sworn,
deposes and says:

That he is a resident of the town of Brea,
County of Orange, State of California, and that he was
on the 21st day of November, 1916, appointed by the
Board of Supervisors of the County of Orange, State of
California, to take the census of the territory embraced
within the boundaries of sections eleven (11) and that part
of section fourteen (14) not situate within the City of
Fullerton;

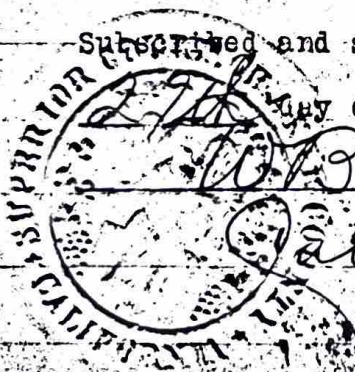
That he is familiar with the boundary lines of
said territory and has taken the census of the inhabitants
residing within said limits;

That the persons whose names are set forth on the
pages hereto attached are each of them a resident
and inhabitant within the boundaries of the territory
above set forth.

Charles C. Kinsler

Subscribed and sworn to before me this

29th day of November, 1916.



W. B. Williams
Deputy Clerk

INDEX TO THE GREAT REGISTER OF ORANGE COUNTY
BREA PRECINCT NO. 3

Voted	NAME	Occupation	Party	P. O. Address	Street
	Duling, Mrs. Angie R.	Housewife	Democrat	Brea	106 S. Orange St.
	Dyke, Mrs. Anna	Supt.	Democrat	Brea	102½ S. Orange St.
	Dilker, Francis L.	Machinist	Democrat	Brea	254 N. Pomona St.
	Dowless, Mrs. Hazel	Housewife	Democrat	Brea	407 E. Ash St.
	Dowless, Carl E.	Salesman	Democrat	Brea	407 E. Ash St.
	Dyke, Mrs. Mildred I.	Housewife	Democrat	Brea	102 S. Flower St.
	Dyer, Mrs. Orena J.	Housewife	Democrat	Brea	104 N. Orange St.
	Dyke, John H.	City Worker	Democrat	Brea	102 S. Flower St.
E					
	Epson, John	Well Puller	Republican	Fullerton	R. 1, Box 40
	Everhart, Mrs. Orra G.	Housewife	Democrat	Brea	218 N. Orange St.
	Everett, Ernest W.	Oil Worker	Democrat	Brea	122½ S. Orange St.
	Everhart, Arthur J.	Laborer	Democrat	Brea	218 N. Orange St.
	Earle, Perl D.	Mechanic	Democrat	Brea	Box 84
	Eagler, Bert	Mechanic	Democrat	Brea	129½ S. Orange
	Estes, Mrs. Catherine	Housewife	Declines	Brea	116 S. Redwood St.
	Eagler, Mrs. Lula M.	Housewife	Democrat	Brea	129½ S. Orange
F					
	Foltz, Simon	Retired	Democrat	Brea	100 N. Pomona St.
	Friend, Mrs. Lulu	Housewife	Republican	Brea	137 S. Orange St.
	Fox, Mrs. Viola J.	Housekeeper	Democrat	Brea	143 S. Orange St.
	Frye, Joe L.	Oil Worker	Democrat	Brea	150 N. Orange St.
	Friend, George	Postmaster	Republican	Brea	137 S. Orange St.
G					
	Gilmore, John W.	Machinist	Republican	Brea	107 S. Flower St.
	Gale, Mrs. Esther L.	Nurse	Republican	Brea	102 S. Redwood St.
	Gale, James E.	Supt.	Democrat	Brea	102 S. Redwood St.
	Griffith, Mrs. Mattie	Housewife	Republican	Brea	S. Orange St.
	Gilmore, Mrs. Emma K.	Housewife	Republican	Brea	107 S. Flower Ave.
	Glimpse, Mrs. Etta	Housewife	Democrat	Brea	211 E. Birch St.
	Glimpse, John J.	Oil Worker	Democrat	Brea	211 E. Birch St.
	Gordon, Lawrence E.	Printer	Declines	Brea	330 N. Orange
	Gordon, Mrs. Elsie	Housewife	Declines	Brea	330 N. Orange
H					
	Hill, Perry	Oil Worker	Democrat	Brea	121 S. Flower St.
	Hume, Mrs. Lottie	Retired	Republican	Brea	137 S. Orange St.
	Hill, Ben N.	Oil Worker	Democrat	Brea	118 S. Orange St.
	Hill, Mrs. Laura R.	Housewife	Democrat	Brea	118 S. Orange St.
	Hyde, Luther W.	Retired	Republican	Brea	142 N. Orange St.
	Holly, Frank M.	Merchant	Democrat	Brea	318 N. Orange Ave.
	Himes, Mrs. Gracie	Housewife	Democrat	Brea	350 N. Orange St.
	Himes, Sylvester	Laborer	Democrat	Brea	350 N. Orange St.
	Hirth, Mrs. Doris M.	Housewife	Republican	Brea	214 N. Orange St.
	Hirth, Wilton C.	Oil Worker	Republican	Brea	214 N. Orange St.
	Hyde, Mrs. Eva	Housewife	Republican	Brea	142 N. Orange St.
	Hamilton, Chas. W.	Oil Worker	Democrat	Brea	315 E. Birch St.
	Hough, Alcinus	R. R. Employee	Democrat	Brea	111 N. Orange St.
	Hollowell, Mrs. Oral L.	Housewife	Democrat	Brea	114 N. Orange St.
	Hollowell, James O.	Salesman	Democrat	Brea	114 N. Orange St.
I					
	Inker, Charles	Labor	Democrat	Brea	Gen. Del.
J					
	Jones, Miss Wilma	Stenographer	Democrat	Brea	100 N. Pomona St.
	Jaster, Vincent E.	Principal	Republican	Brea	215 E. Ash St.
	Johnson, Thomas J.	R. R. Opr.	Democrat	Brea	111 N. Orange St.
	Jenkins, Lyle D.	Oil Worker	Democrat	Brea	623 E. Birch St.
	Jones, Mrs. Ada	Orange Packer	Democrat	Brea	110 S. Orange
	Johnson, Mrs. Bessie	Housewife	Republican	Brea	111 N. Orange
K					
	Kinsler, Mrs. Lena	Housewife	Democrat	Brea	129 S. Orange St.
	Kinsler, Miss Mildred	Ins. Agent	Democrat	Brea	129 S. Orange St.
	Kimmons, Charles F.	W. P. A. Worker	Democrat	Brea	102 S. Orange St.
	Kimmons, Mrs. Aline	Housewife	Democrat	Brea	102 S. Orange St.
	Kuntz, Mrs. Dale	Waitress	Democrat	Brea	215 E. Ash St.
	Kearns, Mrs. Anna	Seamstress	Republican	Brea	138 S. Orange St.

1934

INDEX TO THE GREAT REGISTER OF ORANGE COUNTY

BREA PRECINCT NO. 3

Voted	NAME	Occupation	Party	P. O. Address	Street
.....	Hornaday, Otis P.	Instructor	Republican....	Brea	116 S. Redwood St.
.....	Hines, Mrs. Leota M.	Housewife	Democrat.....	Brea	506 E. Birch St.
.....	Hines, Austin E.	Oil Worker	Democrat.....	Brea	506 E. Birch St.
.....	Holdridge, Lewis	Oil Worker	Democrat.....	Brea	123 S. Laurel St.
.....	Heeme, Mrs. Charlotte	Housewife	Republican....	Brea	137 S. Orange St.
.....	Hennessey, Terrence D.	Packing House	Democrat.....	Brea	617 E. Birch St.
.....	Henderson, Everett D.	Farmer	Socialist.....	Brea	129 1/2 S. Orange Ave.
.....	Hyde, Luther W.	Machinist	Republican....	Brea	142 N. Orange St.
.....	Hyde, Mrs. Eva	Housewife	Republican....	Brea	142 N. Orange St.
.....	Hennessey, Mrs. Isabelle	Housewife	Democrat.....	Brea	507 E. Birch St.
.....	Hennessey, Joseph O.	Oil Worker	Democrat.....	Brea	507 E. Birch St.
.....	Huntington, Mrs. Phidelia	Retired	Republican....	Brea	110 S. Orange St.
.....	Hill, Elton	Baker Helper	Democrat.....	Brea	118 S. Orange St.
.....	Henderson, George H.	Laborer	Republican....	Brea	306 N. Orange
.....	Hyde, Leon	Oil Worker	Democrat.....	Brea	142 N. Orange
I					
.....	Inker, Charles	Machinist	Democrat.....	Brea	100 N. Pomona St.
J					
.....	Johnson, Mrs. Sarah A.	Housewife	Democrat.....	Brea	126 S. Redwood St.
.....	Johnson, Jacob S. P.	Merchant	Democrat.....	Brea	126 S. Redwood St.
.....	Jamison, Mrs. Martha	House Manager	Democrat.....	Brea	Casa Brea Inn
.....	Jamison, Richard	Oil Worker	Democrat.....	Brea	Casa Brea Inn
.....	Johnson, Mrs. Bessie	Housewife	Democrat.....	Brea	115 N. Orange
.....	Johnson, Thomas, J.	Engineer	Republican....	Brea	115 N. Orange
K					
.....	Kinsler, Mrs. Lena	Housewife	Republican....	Brea	129 S. Orange St.
.....	Kellogg, Mrs. Ella S.	Housewife	Democrat.....	Brea	114 N. Orange St.
.....	Kinsler, Mildred	Office Work	Republican....	Brea	129 S. Orange St.
.....	Kirkman, Charles W.	Foundry	Democrat.....	Brea	332 N. Orange St.
.....	Kruse, Fred W.	Molder	Democrat.....	Brea	324 N. Orange
L					
.....	Lynch, Mrs. Iola M.	Housewife	Democrat.....	Brea	110 N. Orange St.
.....	Long, Melvin J.	Oil Worker	Democrat.....	Brea	318 N. Orange St.
.....	Long, Mrs. Frances M.	Housewife	Democrat.....	Brea	318 N. Orange St.
.....	LePage, Bruce	Postman	Democrat.....	Brea	425 E. Birch St.
.....	LePage, Mrs. Hazel	Housewife	Democrat.....	Brea	425 E. Birch St.
.....	Long, Norman M.	Oil Worker	Democrat.....	Brea	138 S. Orange St.
.....	Long, Mrs. Della	Housewife	Declines.....	Brea	138 S. Orange St.
.....	Logsdon, Archie F.	Painter	Democrat.....	Brea	111 Laurel St.
.....	Logsdon, Mrs. Grace B.	Housewife	Democrat.....	Brea	111 Laurel Ave.
M					
.....	Millar, Mrs. Esther	Housewife	Democrat.....	Brea	209 E. Birch St.
.....	Morefield, John H.	Mechanic	Republican....	Brea	114 S. Flower St.
.....	Morefield, Mrs. Crissie	Housewife	Republican....	Brea	114 S. Flower St.
.....	Murray, Mrs. Nellie	Housewife	Democrat.....	Brea	129 S. Flower St.
.....	Meranda, Howard E.	Oil Worker	Declines.....	Brea	125 S. Flower St.
.....	Mon, Theodore E.	Ranch Hand	Democrat.....	Brea	115 S. Laurel St.
.....	Monroe, Mrs. Bertha A.	Housewife	Republican....	Brea	702 E. Birch St.
.....	Monroe, Roy W.	Janitor	Republican....	Brea	702 E. Birch St.
.....	Moore, Mrs. Margaret L.	Housewife	Republican....	Brea	116 S. Redwood St.
.....	Moore, Harvey F.	Bookkeeper	Republican....	Brea	116 S. Redwood St.
.....	Mon, Patrick	Farm Hand	Democrat.....	Brea	117 S. Laurel St.
.....	Massey, Miss Doris	Student	Democrat.....	Brea	114 S. Pomona St.
.....	Millar, Ira B.	Oil Worker	Democrat.....	Brea	209 E. Birch St.
.....	Mathews, Mrs. Alta	Housewife	Democrat.....	Brea	121 Flower
.....	Meredith, Mrs. Helene E.	Housewife	Democrat.....	Brea	141 S. Orange
.....	Meredith, Hollis E.	Dispatcher	Democrat.....	Brea	141 S. Orange
.....	Mon, Miss Jo	Clerk	Democrat.....	Brea	117 Laurel
.....	Mullins, Frank G.	Laborer	Republican....	Brea	306 N. Orange

INDEX TO THE GREAT REGISTER OF ORANGE COUNTY

BREA PRECINCT NO. 3

Voted	NAME	Occupation	Party	P. O. Address	Street
K					
.....	Kolb, Mrs. Nannie	Housewife	Democrat	Brea	137 S. Orange St.
.....	Kinsler, Mrs. Lena	Housewife	Republican	Brea	129 S. Orange St.
.....	Kinsler, Charles C.	Real Estate	Republican	Brea	129 S. Orange St.
.....	Kolb, Henry D.	Oil Worker	Democrat	Brea	137 S. Orange St.
.....	Kellogg, Mrs. Ella S.	Housewife	Democrat	Brea	114 N. Orange St.
.....	Kinsler, Mildred	Office Work	Republican	Brea	129 S. Orange St.
.....	Kinkley, William R.	Oil Worker	Liberty	Brea	117½ N. Orange St.
.....	Kinkley, Mrs. Mollie L.	Housewife	Liberty	Brea	117½ N. Orange St.
.....	Keene, Mrs. Stella	Manager	Republican	Brea	215 E. Ash St.
L					
.....	Lewis, Mrs. Della	Housewife	Declines	Brea	111 S. Flower St.
.....	Lynch, Ernest E.	Oil Worker	Democrat	Brea	110 N. Orange St.
.....	Lynch, Mrs. Iola M.	Housewife	Democrat	Brea	110 N. Orange St.
.....	Long, Melvin J.	Oil Worker	Democrat	Brea	318 N. Orange St.
.....	Long, Mrs. Frances M.	Housewife	Democrat	Brea	318 N. Orange St.
.....	Lowe, Miss Ave M.	Clerk	Democrat	Brea	219 E. Ash St.
.....	Le Page, Bruce	Postman	Republican	Brea	425 E. Birch St.
.....	Le Page, Mrs. Hazel	Housewife	Democrat	Brea	425 E. Birch St.
.....	Long, Norman M.	Oil Worker	Democrat	Brea	138 S. Orange St.
.....	Long, Mrs. Della	Housewife	Declines	Brea	138 S. Orange St.
M					
.....	Millar, Ira B.	Oil Worker	Democrat	Brea	209 E. Birch St.
.....	Millar, Mrs. Esther	Housewife	Democrat	Brea	209 E. Birch St.
.....	Morefield, John H.	Mechanic	Republican	Brea	114 S. Flower St.
.....	Morefield, Mrs. Crissie	Housewife	Republican	Brea	114 S. Flower St.
.....	Mon, Miss Josephine	Housewife	Republican	Brea	117 S. Laurel St.
.....	Mallory, Edward	Driver	Republican	Brea	315 E. Birch St.
.....	Murray, Mrs. Nellie	Housewife	Democrat	Brea	129 S. Flower St.
.....	Mon, Patrick	Ranch Work	Democrat	Brea	117 S. Laurel St.
.....	Mallory, Cecil R.	Welder	Republican	Brea	315 E. Birch St.
.....	Massey, Mrs. Alice	Housewife	Democrat	Brea	114 S. Pomona Ave.
.....	Massey, Miss Doris	Student	Democrat	Brea	114 S. Pomona Ave.
.....	Massey, Harry M.	Merchant	Republican	Brea	114 S. Pomona Ave.
.....	Meranda, Howard E.	Oil Worker	Declines	Brea	125 S. Flower St.
.....	Mon, Theodore E.	Ranch Hand	Democrat	Brea	115 S. Laurel St.
.....	Monroe, Mrs. Bertha A.	Housewife	Republican	Brea	702 E. Birch St.
.....	Monroe, Roy W.	Janitor	Republican	Brea	702 E. Birch St.
.....	Moore, Mrs. Margaret L.	Housewife	Republican	Brea	116 S. Redwood St.
.....	Moore, Harvey F.	Bookkeeper	Republican	Brea	116 S. Redwood St.
Mc					
.....	Mc Murray, Riley	Rancher	Democrat	Brea	302 E. Ash St.
.....	Mc Intyre, Mrs. Dixie L.	Housewife	Democrat	Brea	130 N. Pomona Ave.
.....	Mc Cabe, Mrs. Odessa	Housewife	Democrat	Brea	132 N. Orange St.
.....	Mc Cabe, Lawrence O.	Oil Worker	Democrat	Brea	132 N. Orange St.
.....	Mc Cabe, Mrs. Allie D.	Housewife	Declines	Brea	116 N. Orange St.
.....	Mc Intyre, Guy W.	Welder	Democrat	Brea	130 N. Orange St.
.....	Mc Farland, James W.	Truck Driver	Republican	Brea	106½ N. Pomona St.
.....	Mc Cabe, James A.	Oil Worker	Democrat	Brea	116 N. Orange St.
.....	Mc Lucas, William H.	Laborer	Democrat	Brea	106½ N. Pomona St.
N					
.....	Nicholas, Mrs. Sarah I.	Housewife	Republican	Brea	117½ S. Flower St.
.....	Niehaus, Mrs. Violette	Nurse	Republican	Brea	137½ S. Orange St.
.....	Nedderman, Lewis E.	Student	Democrat	Brea	138 N. Orange St.
P					
.....	Phillips, John B.	Publisher	Republican	Brea	Casa Brea Inn
.....	Pate, Mrs. Helen	Housewife	Democrat	Brea	118 S. Laurel St.
.....	Pickering, Mrs. Bernice	Housewife	Democrat	Brea	114 S. Laurel St.
.....	Pate, John B.	Oil Worker	Democrat	Brea	118 S. Laurel St.
.....	Phillips, Ivie M.	Oil Worker	Democrat	Brea	117½ N. Orange St.

1930

INDEX TO THE GREAT REGISTER OF ORANGE COUNTY

BREA PRECINCT NO. 3

Voted	NAME	Occupation	Party	P. O. Address	Street
F					
.....	Fogerty, Mrs. Elizabeth	Housewife	Democrat	Brea	129 S. Flower St.
.....	Fogerty, Edward Lee	Oil Worker	Democrat	Brea	129 S. Flower St.
.....	Folckemer, George C.	Jeweler	Republican	Brea	137 1-2 S. Orange Ave.
.....	Folckemer, Mrs. Sara K.	Housewife	Republican	Brea	137 1-2 S. Orange Ave.
.....	Frazer, Mrs. Grace	Nurse	Democrat	Brea	114 S. Pomona St.
.....	Frazer, Thomas	Radio Man	Democrat	Brea	114 S. Pomona St.
G					
.....	Gale, James E.	Custodian	Republican	Brea	102 S. Redwood Ave.
.....	Gale, Mrs. Esther L.	Nurse	Democrat	Brea	102 S. Redwood Ave.
.....	Graham, Mrs. Amy	Housewife	Republican	Brea	111 S. Flower St.
.....	Graham, Ferdinand D.	Oil Worker	Republican	Brea	111 S. Flower St.
H					
.....	Hall, William A.	Bookkeeper	Democrat	Brea	130 N. Pomona Ave.
.....	Hayes, Mrs. Emily	Housewife	Democrat	Brea	304 1-2 N. Orange Ave.
.....	Haynes, Frederick G.	Machinist	Republican	Brea	121 S. Flower St.
.....	Hirth, Mrs. Doris	Housewife	Declines	Brea	214 N. Orange Ave.
.....	Hill, Mrs. Laura R.	Housewife	Democrat	Brea	118 S. Orange Ave.
.....	Hill, Benjamin N.	Oil Worker	Democrat	Brea	118 S. Orange Ave.
.....	Hill, Miss Cuba	Missionary	Republican	Brea	118 S. Orange Ave.
.....	Hill, Mrs. Ione I.	Housewife	Democrat	Brea	102 S. Orange Ave.
.....	Hill, Arvil J.	Blacksmith	Democrat	Brea	102 S. Orange Ave.
.....	Hill, Byron	Oil Worker	Democrat	Brea	118 S. Orange Ave.
.....	Himes, George W.	Oil Worker	Democrat	Brea	238 N. Orange St.
.....	Hirth, Wilton C.	Oil Worker	Republican	Brea	214 N. Orange St.
.....	Himes, Mrs. Cora	Housewife	Democrat	Brea	238 N. Orange St.
.....	Himes, Mrs. Katherine	Housewife	Democrat	Brea	238 N. Orange St.
.....	Hart, Mrs. Merlyn	Housewife	Democrat	Brea	306 1-2 N. Orange St.
.....	Holly, Frank M.	Radio Operator	Democrat	Brea	318 N. Orange St.
.....	Hart, Willard E.	Oil Worker	Democrat	Brea	306 1-2 N. Orange St.
I					
.....	Iler, Mrs. Lillie R.	Housewife	Republican	Brea	234 N. Orange St.
.....	Iler, Arthur S.	Oil Worker	Democrat	Brea	234 N. Orange St.
.....	Inker, Charles	Machinist	Democrat	Brea	101 E. Ash St.
J					
.....	Jackson, Wallace	Draftsman	Republican	Brea	Casa Brea Inn
.....	Johnson, Jacob S. P.	Merchant	Democrat	Brea	126 S. Redwood St.
.....	Johnson, Mrs. Sarah A.	Housewife	Democrat	Brea	126 S. Redwood St.
K					
.....	King, Mrs. Pearl	Housewife	Democrat	Brea	506 E. Birch St.
.....	King, William W.	Oil Worker	Democrat	Brea	506 E. Birch St.
.....	Kinsler, Charles C.	Real Estate	Republican	Brea	129 S. Orange St.
.....	Knowles, Carter L.	Store Manager	Democrat	Brea	254 N. Pomona St.
.....	Kinsler, Mrs. Lena	Housewife	Republican	Brea	129 S. Orange St.
.....	Kolb, Henry D.	Oil Worker	Democrat	Brea	137 S. Orange St.
.....	Kolb, Mrs. Nan	Housewife	Democrat	Brea	137 S. Orange St.
.....	Kellogg, Mrs. Ella S.	Housewife	Democrat	Brea	114 N. Orange St.
.....	Keene, Mrs. Stella	Merchant	Republican	Brea	136 S. Pomona Ave.
L					
.....	Long, Mrs. Della E.	Housewife	Republican	Brea	138 S. Orange Ave.
.....	Leech, Mrs. Helen M.	Housewife	Republican	Brea	101 S. Redwood St.
.....	Leech, James	Oil Worker	Republican	Brea	101 S. Redwood Ave.
.....	Long, Norman M.	Oil Worker	Democrat	Brea	138 S. Orange Ave.

1928

INDEX TO THE GREAT REGISTER OF ORANGE COUNTY
BREA PRECINCT NO. 3

Voted	NAME	Occupation	P. O. Address	Street
.....	Darm, George C.	Yard Man	Brea	334 N. Orange St.
.....	Daugherty, Mrs. Ethel	Stenographer	Brea	304 N. Orange St.
.....	Davies, William	Shop Helper	Brea	104 S. Flower St.
.....	Daugherty, John	Truck Driver	Brea	304 N. Orange St.
.....	Dunkle, Glenn R.	Oil Worker	Brea	127 Redwood St.
.....	Darm, Mrs. Lillie D.	Housewife	Brea	305 N. Orange St.
.....	De Paiva, Ann	Housewife	Brea	104 N. Orange St.
.....	De Paiva, Antone	Molder	Brea	104 N. Orange St.
.....	Davis, Joseph Burton	Oil Worker	Brea	133½ S. Flower St.
E				
.....	Epla, Mrs. Minnie B.	Housewife	Brea	135 S. Orange St.
.....	Epla, Harlan A.	Oil Worker	Brea	135 S. Orange St.
.....	Everhart, Mrs. Orra G.	Housewife	Brea	218 N. Orange St.
.....	Everhart, Arthur J.	Oil Worker	Brea	218 N. Orange St.
.....	Everett, Mrs. Frankie	Stenographer	Brea	121 S. Redwood St.
.....	Evans, Ray H.	Stenographer	Brea	306½ W. Orange St.
.....	Evans, Mrs. E. Ione	Housewife	Brea	306 W. Orange St.
F				
.....	Fogerty, Mrs. Elizabeth	Housewife	Brea	129 S. Flower St.
G				
.....	Gheen, Robert Lee	Butcher	Brea	102 S. Orange St.
.....	Gale, Mrs. Esther L.	Nurse	Brea	Casa Brea Inn
.....	Glimpse, John J.	Oil Worker	Brea	211 E. Birch St.
.....	Gale, James E.	Custodian	Brea	Casa Brea Inn
.....	Gray, Vivian E.	Oil Worker	Brea	206 N. Orange St.
.....	Gesterling, Edward	Electrician	Brea	115 S. Laurel St.
H				
.....	Hall, William A.	Asst. Mgr.	Brea	130 N. Pomona St.
.....	Higgins, Mrs. Elda	Housewife	Brea	106½ N. Pomona St.
.....	Herrick, Walter	Clerk	Brea	Ash St.
.....	Herrick, Mrs. Margery	Housewife	Brea	214 E. Ash St.
.....	Hirth, Mrs. Doris M.	Housewife	Brea	214 N. Orange St.
.....	Hirth, Wilton C.	Oil Worker	Brea	214 N. Orange St.
.....	Himes, Mrs. Ella	Housewife	Brea	238 N. Orange St.
.....	Himes, Mrs. Cora	Housewife	Brea	110 S. Orange St.
.....	Hill, Perry	Carpenter	Brea	124½ S. Flower St.
.....	Himes, George W.	Oil Worker	Brea	238 N. Orange St.
.....	Himes, William A.	Oil Worker	Brea	110 S. Orange St.
.....	Hill, Mrs. Laura	Housewife	Brea	118 S. Orange St.
.....	Hill, Ben N.	Oil Man	Brea	118 S. Orange St.
.....	Horton, Donald J.	Oil Worker	Brea	215 E. Ash St.
.....	Horton, Mrs. Grace	Stenographer	Brea	215 E. Ash St.
.....	Hill, Emmett	Oil Worker	Brea	439 S. Madrona St.
.....	Henderson, Everett	Rancher	Brea	129 S. Orange St.
I				
.....	Iler, Mrs. Lillie	Housewife	Brea	234 N. Orange St.
.....	Iler, Arthur S.	Oil Worker	Brea	234 N. Orange St.
.....	Inker, Charles	Tool Maker	Brea	101 E. Ash St.
K				
.....	Kinsler, Mrs. Lena I.	Housewife	Brea	129 S. Orange St.
.....	Kellogg, Mrs. Ella S.	Housewife	Brea	114 N. Orange St.
.....	Kinsler, Charles C.	City Judge	Brea	129 S. Orange St.
.....	Knapp, Fay Robert	Oil Worker	Brea	106 N. Pomona St.
.....	Knowles, Carter L.	Asst. Mgr.	Brea	254 N. Pomona St.
L				
.....	Leuzinger, John A.	Contractor	Brea	128 S. Orange St.
.....	Lacey, Fred M.	Carpenter	Brea	112 S. Pomona St.
.....	Long, Melvin J.	Oil Worker	Brea	318 N. Orange St.
.....	Long, Mrs. Frances M.	Housewife	Brea	318 N. Orange St.

1926

INDEX TO THE GREAT REGISTER OF ORANGE COUNTY
BREA PRECINCT NO. 3

No.	Voted	NAME	Occupation	P. O. Address	Street
H					
58		Higgins, Mrs. Elda	Housewife	Brea	106½ W. Pomona
59		Hirth, Mrs. Doris M.	Housewife	Brea	214 N. Orange
60		Hirth, Welton C.	Oilworker	Brea	214 N. Orange
61		Hall, Mrs. Mae	Housewife	Brea	Sterns Lease
62		Hill, Orvil J.	Oilworker	Brea	257 S. Redwood
63		Hall, Wm. A.	Salesman	Brea	130 W. Pomona
64		Helmick, Carl F.	Salesman	Brea	130 N. Pomona
65		Hill, Byron B.	Oilworker	Brea	114 N. Orange
66		Hill, Benjamin N.	Oilworker	Brea	114 N. Orange
67		Hill, Mrs. Laura R.	Housewife	Brea	114 N. Orange
68		Hopper, Howard	Oilworker	Brea	115 N. Orange
I					
69		Iler, Arthur S.	Oilworker	Brea	234 N. Orange
70		Iler, Mrs. Lillie F.	Housewife	Brea	234 N. Orange
J					
71		Jones, Charley	Oilworker	Brea	102½ S. Orange
72		Jones, Mrs. Lauannie	Housewife	Brea	102½ S. Orange
73		Jackson, Fred	Oilworker	Brea	310 N. Orange
K					
74		King, William J.	Oilworker	Brea	210 E. Dedora
75		Kinsler, Mrs. Lena	Housewife	Brea	Box 186
76		Kinsler, Charles C.	Real Estate	Brea	Box 186
L					
77		Long, Mrs. Frances M.	Housewife	Brea	318 N. Orange
78		Lane, Mrs. Mary E.	Housewife	Brea	146 Orange
79		Lane, Earl D.	Oilworker	Brea	146 Orange
80		Lane, David	Janitor	Brea	146 Orange
81		Lester, William B.	Shoemaker	Brea	111 E. Ash
82		Lester, John F.	Shoemaker	Brea	111 E. Ash
83		Long, Mrs. Della E.	Housewife	Brea	128 Orange Ave.
84		Long, Norman M.	Gas Engineer	Brea	128 Orange Ave.
M					
85		Murphy, William	Manager	Brea	111 S. Flower
86		Marcy, Mrs. Opal M.	Housewife	Brea	217 N. Orange
87		Marcy, Herbert S.	Oilworker	Brea	217 N. Orange
88		Meranda, Mrs. Maud	Housewife	Brea	125 Flower
89		Meranda, Howard E.	Oilworker	Brea	125 Flower
90		Mitchell, W. E.	Oilworker	Brea	128 S. Orange
91		Murphy, Lester C.	Meat Cutter	Brea	111 S. Flower
92		Murphy, Mrs. Lizzie	Housewife	Brea	111 S. Flower
93		Murphy, Earl A.	Oilworker	Brea	111 S. Flower
94		Murray, Earnest L.	Oilworker	Brea	129 S. Flower
95		Morefield, Mrs. Hannah	Housewife	Brea	121 S. Redwood
96		Morefield, James A.	Carpenter	Brea	121 S. Redwood
Mc					
97		McCabe, Edward F.	Merchant	Brea	212 E. Ash
98		McCabe, Mrs. Allie D.	Housewife	Brea	116 N. Orange
99		McCabe, James A.	Oilworker	Brea	116 N. Orange
100		McBride, James B.	Oilworker	Brea	142 S. Orange
N					
101		Nesbitt, Mrs. Lura Lee	Housewife	Brea	110 S. Flower
102		Nesbitt, George E.	Oilworker	Brea	110 S. Flower
P					
103		Petersen, Jim A.	Oilworker	Brea	121 S. Flower
104		Potter, Mrs. Mable	Housewife	Brea	117 S. Orange
105		Potter, Sidney B.	Garage Owner	Brea	117 S. Orange
106		Perry, James P.	Tailor	Brea	102 N. Pomona

1924

INDEX TO THE GREAT REGISTER OF ORANGE COUNTY

BREA PRECINCT NO. 2

No.	VOTED	NAME	OCCUPATION	P. O. ADDRESS	STREET
157	Hurst, Mrs. Ivy	Housewife	Fullerton	R. D. No. 3
158	Hulsy, Jack	Oilworker	Brea	Box 3
159	Hollingsworth, Oak B.	Oilworker	Brea	
160	Horrocks, Lloyd C.	Carpenter	Brea	
161	Hall, William A.	Store	Brea	Box 154
162	Hemus, Benjamin	Miner	Brea	
163	Howe, Mrs. Ethel M.	Housewife	Brea	Box 285
164	Hill, Byron	Oilworker	Brea	Box 586
165	Hill, Benjamin U.	Oilworker	Brea	Box 586
166	Hamilton, Charles	Oilworker	Brea	
167	Hill, Arvil J.	Oilworker	Brea	
168	Howe, Thomas H.	Oilworker	Brea	
169	Haldding, William M.	Laborer	Brea	General Delivery
170	Horan, Michael J.	Cement	Brea	
171	Horan, Mrs. Johanna	Housewife	Brea	
172	Hemus, Solomon	Oilworker	Brea	
173	Hamilton, Alexander	Cook	Brea	

I

174	Iler, Mrs. Lillie	Housewife	Brea	Box 342
175	Iler, Arthur S.	Oilworker	Brea	Box 342

J

176	Johnson,, Mrs. Rosanna	Housewife	Brea	
177	Johnson, Mrs. Elizabeth	Housewife	Brea	
178	Jackson, James	Driver	Brea	
179	Jesser, Mrs. Emma	Housewife	Brea	Box 498
180	Johnson, Charles R.	Oilworker	Brea	

K

181	Kiger, Virgil	Oilworker	Brea	Box 523
182	Kimmons, Charles F.	Oilworker	Brea	
183	Kinsler, Charles C.	Oilworker	Brea	
184	Kautz, Raymond	Machinist	Brea	
185	Krepps, Frank S.	Plumber	Brea	Box 333
186	Killebew, D.	Electrician	Brea	
187	Kaylor, Chester E.	Oilworker	Brea	
188	Kinsler, Mrs. Lena	Housewife	Brea	

L

189	Lester, William B.	Shoemaker	Brea	
190	Lanc, Mrs. Mary	Housewife	Brea	
191	Lane, David	Gardner	Brea	
192	Looney, James C.	City Marshal	Brea	
193	Larson, Roy A.	Oil Station	Brea	
194	Long, Mrs. Francis M.	Housewife	Brea	
195	Long, Mrs. Della E.	Housewife	Brea	Box 255
196	Looney, Mrs. Dolly C.	Housewife	Brea	
197	Long, Melvin J.	Oilworker	Brea	
198	Lester, John F.	Repairer	Brea	
199	Long, Norman M.	Oilworker	Brea	

M

200	Mann, Mrs. Francis A.	Housewife	Brea	
201	Martin, Walter	Oilworker	Brea	
202	Marcy, Miss Mildred	Housewife	Brea	

1922

INDEX TO THE GREAT REGISTER OF ORANGE COUNTY

BREA PRECINCT NO. 2

No.	VOTED	NAME	OCCUPATION	P. O. ADDRESS	STREET
149	King, Mrs. Louisa K.	Housewife	Brea
150	Krepps, Frank S.	Plumber	Brea
151	Kipp, George D.	Supply Man	Brea
152	Klassen, Mrs. Frieda E.	Housewife	Brea
153	King, Miles	Pumper	Brea
154	Kaylor, A. F.	Oil Man	Brea
155	Kinsler, Charles C.	Realtor	Brea
156	Kinsler, Mrs. Lena	Housewife	Brea

L

157	Lester, Mrs. Mamie	Housewife	Brea
158	Lester, William B.	Shoemaker	Brea
159	Lookabaugh, Mrs. Gertrude ...	Housewife	Brea
160	Long, Mrs. Della E.	Housewife	Brea
161	Lowe, George	Helper	Brea
162	Logsdon, Mrs. Charlotte B.	Housewife	Brea
163	Logsdon, Archibald M.	Rotary Helper	Brea
164	Lester, John F.	Shoe Repairer	Brea

M

165	Martin, Mrs. Lois	Housewife	Brea
166	Munyon, Mrs. Emma M.	Housewife	Brea
167	Mathews, Mrs. Florence	Housewife	Brea
168	Mathews, Lawrence J.	Cook	Brea
169	Mon Santa Mrs. Achsah	Housewife	Brea
170	Murphy, Mrs. Edna I.	Housewife	Brea
171	Murphy, Samuel M.	Oil Worker	Brea
172	Murray, Mrs. Myrville	Housewife	Brea
173	Metzger, Mrs. Adeline	Housekeeping	Brea
174	Monfield, James A.	Carpenter	Brea
175	Meissner, Mrs. Maple L.	Housewife	Brea
176	Morein, Sol	Merchant	Brea
177	Mitchell, Watson E.	Driller	Brea
178	McCabe, Mrs. Allie D.	Housewife	Brea
179	McCabe, James A.	Blacksmith	Brea
180	McIntyre, Myron L.	Oil Worker	Brea
181	McIntyre, Mrs. Sadie J.	Housewife	Brea
182	McIntyre, Mrs. Mary C.	Housewife	Brea
183	McIntyre, Mrs. Lucina B.	Housewife	Brea
184	McIntyre, Lincoln L.	Carpenter	Brea
185	McVeigh, Mrs. Anna M.	Librarian	Brea
186	McGraw, Mrs. Ella H.	Homekeeper	Brea
187	McGraw, Charles R.	Molder	Brea
188	Murray, Jack L.	Welder	Brea
189	Martin, Dexter	Mechanic	Brea
190	McCart, William E.	Mechanic	Brea

N

191	Nicklet, John A.	Engineer	Brea
192	Nicklet, Mrs. Eleanor	Housewife	Brea
193	Nay, Lester	Oil Worker	Brea
194	Nay, Mrs. Jennie	Housewife	Brea
195	Naley, Peter	Blacksmith	Brea
196	Nasatir, Julius	Druggist	Brea

O

197	Owens, John C.	Engineer	Brea
198	Owens, Mrs. Marie	Housewife	Brea

1920

INDEX TO THE GREAT REGISTER OF ORANGE COUNTY
BREA PRECINCT NO. 2

No.	VOTED	NAME	OCCUPATION	P. O. ADDRESS	STREET
97		Hambleton, Walter N.	Rancher	Brea	
98		Hambleton, Samuel C.	Rancher	Brea	
99		Hyde, Eve I.	Housewife	Brea	
100		Hyde, L. W.	Machinist	Brea	
101		Hurst, I. N.	City Marshal	Brea	
102		Hurst, Mrs. Mary C.	Housewife	Brea	
103		Hurst, Mrs. Eda	Housewife	Brea	
104		Hurst, Mrs. Geneva	Housewife	Brea	
105		Hurst, Isaac N.	Retired	Brea	
106		Holdding, Mrs. May	Housewife	Fullerton	R. D. 3
107		Hollingsworth, George	Oil Worker	Brea	
108		Harold, R. H.	Druggist	Brea	
109		Harris, Robert V.	Oil Man	Brea	

I

110		Illingworth, John H.	Oil Man	Brea	
111		Illingworth, Mrs. Jennie H.	Housewife	Brea	
112		Iler, Mrs. Lillie F.	Housewife	Brea	
113		Iler, Arthus S.	Fireman	Brea	

K

114		Keesecker, Zera E.	Mechanic	Brea	
115		Keith, Mrs. Grace A.	Housewife	Brea	
116		King, Miles	Oil Man	Brea	
117		King, Mrs. Louisa K.	Housewife	Brea	
118		Kinsler, Charles C.	Real Estate	Brea	
119		Kinsler, Mrs. Ada	Housewife	Brea	
120		Keith, Charles	Laborer	Brea	
121		Kinsler, Mrs. Lena	Housewife	Brea	
122		Keith, Mrs. Jenny	Housewife	Brea	
123		Keith, Edwin E.	Oil Man	Brea	

L

124		Lloyd, Miss Alberta A.	Clerk	Brea	
125		Logsdon, Archibold Mac.	Oil Worker	Brea	
126		Logsdon, Charlotte B.	Housewife	Brea	
127		Lester, Mrs. Mamie	Housewife	Brea	
128		Love, I. H.	Oil Man	Brea	
129		Long, Mrs. Della E.	Housewife	Brea	
130		Love, Mrs. Ruby	Housewife	Brea	
131		Lephram, Elmer D.	Oil Man	Brea	
132		Lapham, Mrs. Mary	Housewife	Brea	
133		Long, Norman M.	Engineer	Brea	

M

134		Munger, Mrs. Frances H.	Housewife	Brea	
135		Munger, Ellwood J.	Time Keeper	Brea	
136		Moore, Joseph A.	Oil Man	Fullerton	R. D. 3
137		Merrifield, Cyrus R.	Rancher	Fullerton	R. D. 3
138		Merrifield, Mrs. Nellie W.	Housewife	Brea	
139		Moseley, Charles T.	Oil Man	Brea	
140		Mitchell, Watson E.	Oil Man	Brea	
141		Martin, Dexter	Garage Keeper	Brea	
142		Martin, Mrs. Lois	Housewife	Brea	

1918

**Index to the Great Register of Orange County
Brea Precinct No. 2**

No.	VOTED	NAME	OCCUPATION	P. O. ADDRESS	STREET
E					
48	Evans, Robert	Engineer	Brea	
49	Epson, John	Pumper	Brea	
50	Edeburn, Edward B.	Driller	Brea	
51	Edeburn, Mrs. Olive D.	Housewife	Brea	
F					
52	Finch, Robert L.	Oiler	Brea	
53	Finch, Mrs. Rosa M.	Housewife	Brea	
54	Fife, James J.	Laborer	Brea	
55	Ford, George W.	Driver	Brea	
G					
56	Gurley, Mrs. Winifred	Housewife	Brea	
57	Gurley, Elmer A.	Oiler	Brea	
58	Goodell, John A.	Oil Man	Fullerton	R. D. 3
H					
59	Hollis, Mrs. Erma L.	Housewife	Brea	
60	Hollis, Jack R.	Driller	Brea	
61	Hambleton, Samuel G.	Rancher	Brea	
62	Hauser, Samuel	Oil Man	Brea	
63	Hurst, Isaac N.	Laborer	Brea	
64	Hosmer, Mrs. Mary J.	Housewife	Brea	
65	Hosmer, Chester C.	Machinist	Brea	
66	Hurst, Willis E.	Boiler Maker	Brea	
67	Hurley, Miss Lillian	Teacher	Brea	
68	Hardison, Lewis A.	Oil Man	Brea	
69	Hurst, Edwin F.	Garage Man	Brea	
70	Hardison, Mrs. Margaret	Housewife	Brea	
71	Hollowell, Jas. O.	Clerk	Brea	
72	Hemenway, Edwin A.	Oil Man	Brea	
73	Hines, Clarence	Laborer	Brea	
74	Hurst, Lafayette	Boilermaker	Brea	
I					
75	Isbell, Lester L.	Clerk	Brea	
J					
76	Jamison, Mrs. Martha J.	Housewife	Fullerton	R. D. 4
77	Jamison, Elmer W.	Oil Man	Fullerton	R. D. 4
K					
78	Kearns, Dan A.	Driller	Brea	
79	Kinsler, Charles C.	City Clerk	Brea	
80	Kearns, Mrs. Anna	Housewife	Brea	
81	Kinsler, Mrs. Lena	Housewife	Brea	
82	Kinsler, Mrs. Ada	Cook	Brea	
83	Koontz, Rollie	Oil Man	Brea	
84	Koontz, Mrs. Rosetta	Housewife	Brea	
85	Kearns, Archibald F.	Truck Driver	Brea	
86	Kerns, Mrs. Emma A.	Housewife	Brea	
87	Keyster, Elza C.	Blacksmith	Brea	
88	Kidd, John S.	Oil Worker	Fullerton	R. D. 4

1916

**Index to the Great Register of Orange County
Brea Precinct No. 1**

No.	VOTED	NAME	OCCUPATION	P. O. ADDRESS	STREET
157	Hambleton, Walter N.	Dairyman	Brea	
158	Hurst, Isaac N.	Real Estate	Brea	
159	Hambleton, Miss Laura		Brea	
160	Hambleton, Mrs. Clara A.	Housewife	Brea	
161	Hambleton, Mrs. Esther	Housewife	Brea	
162	Hardin, Mrs. Maude E.	Housewife	Brea	
163	Huddleston, Pliny C.	Truckman	Brea	
164	Hunter, Martin	Engineer	Brea	
165	Hollowell, Berrel G.	Pipefitter	Brea	
166	Hurst, Willis E.	Boilermaker	Brea	
167	Hosmer, Mrs. Mary J.	Housewife	Brea	
168	Hosmer, Chester C.	Machinist	Brea	
169	Harkey, Levi J.	Laborer	Brea	
170	Hollis, John R.	Driller	Brea	
171	Hollowell, Isaac P.	Oilman	Brea	
172	Hollowell, Edmund W.	Oilman	Brea	
173	Husted, John J.	Postmaster	Brea	
174	Harris, Mrs. Mae E.	Housewife	Brea	
175	Hollowell, James O.	Clerk	Brea	
176	Hendry, John A.	Oilman	Brea	
177	Hardin, Elmer E.	Teamster	Brea	
178	Hood, Mrs. Anna Z.	Housewife	Brea	
179	Hood, Richard A.	Oilman	Brea	
180	Hendry, Alex	Laborer	Brea	
181	Husted, Mrs. Clara P.	Housewife	Brea	
182	Hamel, Leslie B.	Oilworker	Brea	
183	Hurst, Mrs. Eda P.	Housewife	Brea	
184	Huddleston, Mrs. Pearl	Housewife	Brea	
185	Hardison, Mrs. Margret	Housewife	Brea	

I

186	Isbell, Mrs. Gertrude E.	Housewife	Brea	
187	Isbell, Jonas B.	Clerk	Brea	

J

188	Jeffries, Lester A.	Clerk	Brea	
189	Jamison, William	Oil Man	Brea	
190	Jewell, Walter J.	Machinist	Brea	
191	Jamison, Mrs. Martha J.	Housewife	Brea	
192	Jennings, Charles Frank	Engineer	Brea	
193	Jamison, James A.	Asst. Engineer	Brea	
194	Jamison, James W.	Carpenter	Brea	
195	Jarvis, Mrs. Eva M.	Housewife	Brea	
196	Jarvis, Clarence C.	Dentist	Fullerton	R. D. 4
197	Jamison, Elmer W.	Teamster	Brea	
198	Johnson, Ora	Laborer	Brea	
199	Jaques, George	Machinist	Brea	
200	Jamison, Harry H.	Janitor	Brea	
201	Jamison, Mrs. Bessie	Housewife	Brea	
202	Jennings, Mrs. Nora A.	Housewife	Brea	

K

203	Kinsler, Charles C.	Oil Man	Brea	
204	Kinsler, Mrs. Lena	Housewife	Brea	
205	Koontz, Mrs. Rosetta	Housewife	Brea	
206	Keith, Mrs. Grace A.	Housewife	Brea	
207	Kinsler, Mrs. Ada	Housewife	Brea	
208	Koontz, Rollie W.	Oil Man	Brea	

1914

Index to the Great Register of Orange County Brea Precinct

NO.	VOTED	NAME	OCCUPATION	PARTY	P. O. ADDRESS	STREET
J						
265	Johnson, George Wm.....	Driller.....	Declines to state	Brea	
266	Johnson, Glenn M.....	Blacksmith.....	Progressive	Brea	
267	Johnson, Mrs. Amy Viola.....	Housewife.....	Republican	Brea	
268	Johnson, Chris	Machinist.....	Republican	Fullerton	R.F.D.4
269	Jones, Harley J.....	Rig Builder.....	Democrat	Fullerton	R.F.D.4
270	Jennings, Charles F.....	Oilman.....	Democrat	Brea	
271	Jones, Austin S.....	Pipelinier.....	Democrat	Fullerton	R.F.D.4
272	Jackroy, Ed. A.	Oil Worker	Democrat	Brea	
273	Johnson, John B.	Oil Man	Progressive	Brea	
274	Jamison, James	Oil Worker	Declines to state	Brea	
275	Johnston, Sidney	Driller	Democrat	Brea	

K

276	Kammerdiner, James A.....	O. W. Foreman.....	Republican	Fullerton	R.F.D.4
277	Keith, Mrs. Grace.....	Housewife.....	Declines to state	Fullerton	R.F.D.4
278	Kuenzli, Alexander	T. P. Operator.....	Progressive	Fullerton	R.F.D.4
279	Kane, James J.....	Boilermaker.....	Democrat	Fullerton	R.F.D.3, Box 80
280	Keith, Mrs. Jennie Jessie.....	Housewife.....	Democrat	Brea	
281	Kuhn, Joseph	Teamster.....	Republican	Brea	
282	Kuenzli, Mrs. Mabelle May.....	Housewife.....	Progressive	Fullerton	R.F.D.4
283	Kellogg, Mrs. Ella S.....	Bakery.....	Democrat	Brea	
284	Keith, Charles N.....	Oilman.....	Republican	Fullerton	R.F.D.4
285	Kerr, Frank E.....	Driller.....	Republican	Fullerton	R.F.D.4
286	Keith, Edwin E.....	Engineer.....	Republican	Brea	
287	Kellerman, John	Pipefitter.....	Democrat	Brea	
288	King, John R.....	Toolie.....	Democrat	Fullerton	
289	Kammerdiner, Mrs. Myrtle B.....	Republican	Fullerton	
290	Kimmons, Charles F.....	Teamster.....	Socialist	Fullerton	
291	Kimmons, James	Teamster.....	Socialist	Fullerton	
292	Kammerdiner, James A.....	Foreman.....	Republican	Fullerton	
293	Kearns, Dan A.....	Truck Driver.....	Republican	Brea	
294	Kerr, Ralph B.....	Driller.....	Republican	Fullerton	R.F.D.4
295	Kerr, Mrs. Dorothy.....	Housewife.....	Republican	Fullerton	R.F.D.4
296	Koontz, Rollie.....	Oilman.....	Progressive	Brea	
297	Kerr, Mrs. Mary I.....	Housewife.....	Republican	Fullerton	R.F.D.4
298	Kearns, Mrs. Anna R.....	Housewife.....	Republican	Brea	
299	Kinsler, Mrs. Lena I.....	Housewife.....	Republican	Brea	
300	Kinsler, Charles C.....	Hotel.....	Republican	Brea	
301	Klocker, Jos. B.	Tool Dresser	Declines to state	Brea	
302	Kelly, Martin J.	Tool Dresser	Declines to state	Fullerton	R. D. 3
303	Kelly, Lewis	Tank Worker	Declines to state	Fullerton	R. D. 3
304	King, Arthur A.	Oil Man	Declines to state	Brea	
305	Koontz, Mrs. Rosetta	Housewife.....	Prohibition	Brea	
306	Koenig, Ed. G.	Tool Dresser	Declines to state	Brea	

L

307	Leyman, John	Pumper.....	Democrat	Fullerton	
308	Latshaw, Charles C.....	Barber.....	Republican	Brea	
309	Long, John N.....	Retired.....	Democrat	Brea	
310	Long, Mrs. Lydia A.....	Housewife.....	Declines to state	Brea	
311	Linebarger, Mrs. Sophie L.....	Housewife.....	Democrat	Fullerton	R.F.D.4
312	Linebarger, William L.....	Rancher.....	Democrat	Fullerton	R.F.D.4
313	Lofthouse, James C.	Oil Man	Declines to state	Fullerton	
314	Lewis, Malvin	Oil Man	Declines to state	Fullerton	
315	Latshaw, Edwin S.	Liveryman	Declines to state	Brea	

1912

Index to the Great Register of Orange County Brea Precinct

No.	VOTED	NAME	OCCUPATION	PARTY	P. O. ADDRESS	STREET
110	Harkey, Mittie	Housewife	Republican	Fullerton	R. D. 4
111	Hambleton, Chas. Arthur	Clerk	Republican	Fullerton	R. D. 4
112	Huddleston, Pearl S.	Housewife	Republican	Fullerton	R. D. 4
113	Hatfield, George Thurston	Oilman	Fullerton,	R. D. 4
114	Hogg, Tony	Oilman	Fullerton	R. D. 4

J

115	Johnson, Chris	Machinist	Republican	Fullerton	R. D. 4
116	Jones, Grafton	Tool Dresser	Socialist	Fullerton	R. D. 4
117	Johnson, James M.	Pumper	Republican	Fullerton	R. D. 4
118	Jorgensen, Katie	Cook	Republican	Fullerton	R. D. 4
119	Jewell, William H. R.	Tool Dresser	Socialist	Fullerton	R. D. 4
120	Johnston, Mary E.	Homekeeper	Republican	Fullerton	R. D. 4
121	Johnston, William H.	Driller	Republican	Fullerton	R. D. 4
122	Johnson, Evan A.	Bookkeeper	Progressive	Fullerton	R. D. 4, Box 7a
123	Johnston, Eugene D.	Salesman	Progressive	Fullerton	R. D. 4
124	Justus, Millard Fillmore	Barber	Fullerton	R. D. 4

K

125	Kinsler, Lena I.	Republican	Fullerton	R. D. 4
126	Kinsler, Charles C.	Oilman	Republican	Fullerton	R. D. 4
127	Classen, Gus L.	Teamster	Republican	Fullerton	R. D. 4
128	Kuhn, Lawrence J.	Driller	Republican	Fullerton	R. D. 4
129	Koontz, Rollie W.	Laborer	Declines to state	Fullerton	R. D. 4
130	Kuhn, Carlene P.	School Teacher	Declines to state	Fullerton	R. D. 4
131	Kammerdiner, James Allen	Oilman	Democrat	Fullerton	R. D. 3
132	Kinsler, Chas. Clement	Oilman	Republican	Fullerton	R. D. 4
133	Kinsler, Lena	Housewife	Republican	Fullerton	R. D. 4
134	Kammerdiner, Myrtle V.	Housewife	Fullerton	R. D. 4, Box 123
135	Kuenzli, Alexander	Oilman	Republican	Fullerton	R. D. 4

L

136	Lawrence, Bertram	Tool Dresser	Republican	Fullerton	R. D. 4
137	Lockausen, James Monroe	Oilman	Fullerton	R. D. 4
138	Luzo, Joseph M.	Driller	Fullerton	R. D. 4, Box 121
139	Lowry, John T.	Oilman	Fullerton	R. D. 2
140	Lemley, LaFayette	Tool Dresser	Progressive	Fullerton	R. D. 4

M

141	Mesner, James Madison	Oilman	Republican	Fullerton	R. D. 4
142	Mackay, Robert A.	Gardener	Republican	Fullerton	R. D. 4
143	Manson, Jesse M.	Oil Well Worker.	Declines to state	Fullerton	R. D. 4
144	Marshall, Ruth A.	Homekeeper	Socialist	Fullerton	R. D. 4
145	Marple, Henry M.	Accountant	Republican	Fullerton,	R. D. 4
146	Meranda, Lillie Maud	Homekeeper	Republican	Fullerton,	R. D. 4
147	Murphy, Charles W.	Fireman	Republican	Fullerton,	R. D. 4
148	Meranda, Robert B.	Blacksmith	Democrat	Fullerton	R. D. 4
149	Meranda, Bessie M.	Homekeeper	Republican	Fullerton	R. D. 4
150	Manson, Caroline M.	Homekeeper	Republican	Fullerton	R. D. 4
151	Marple, Marian Butler	Homekeeper	Republican	Fullerton	R. D. 4
152	Meranda, George	Laborer	Socialist	Fullerton	R. D. 4
153	McCarren, Annie M.	Homekeeper	Republican	Fullerton	R. D. 4
154	Marsh, Charles W.	Clerk	Republican	Fullerton	R. D. 4
155	Marsh, Arthur Orlo	Tool Dresser	Republican	Fullerton	R. D. 4
156	Maley, William	Pumper	Democrat	Fullerton	R. D. 4
157	Moore, Clara M.	Homekeeper	Socialist	Fullerton	R. D. 4
158	Mesner, Ada V.	Homekeeper	Republican	Fullerton,	R. D. 4
159	McCarren, Michael	Farmer	Republican	Fullerton,	R. D. 4
160	Meranda, Howard E.	Laborer	Independent	Fullerton,	R. D. 4
161	McWreath, Frank	Pumper	Republican,	Fullerton	R. D. 4
162	Miller, Charles	Manager	Democrat	Fullerton	R. D. 4
163	Miller, Alma C.	Housewife	Democrat	Fullerton	R. D. 4

On June 10, 1904, in Barry, Vermont, Mr. Kinsler was married to Miss Lena Morse, a native of Vermont and a daughter of A. D. Morse and Laura (Lovering) Morse. Mr. and Mrs. Kinsler are the parents of the following children: Thelma, the wife of Everett Henderson, of Compton, California, and the mother of a son, Richard; Arlene, who died on March 24, 1925, at the age of sixteen years; Mildred, and Leland C., an adopted son.

In his political views Mr. Kinsler is a Republican and has always evinced a deep interest in matters relating to the welfare of the community. He attends the Congregational church. He belongs to Citrol Lodge, F. & A. M., at Brea; Fullerton Chapter, R. A. M.; Fullerton Commandery, K. T.; Al Malaikah Temple, A. A. O. N. M. S., at Los Angeles; Brea Lodge, K. P.; Anaheim Lodge, B. P. O. E.; Ontario Lodge, D. O. O. K., at Ontario, California; the Modern Woodmen of America; the United Spanish War Veterans at Fullerton and Ancient Egyptian Order of Sciots at Fullerton. He is a man of earnest purposes, is sincere and straightforward in all things and is one of Brea's most highly respected citizens.

CHARLES C. KINSLER.

Charles C. Kinsler, who has served in an able and acceptable manner for the past seven years as city judge of Brea, is one of that city's representative men, having long been prominent in business and official life, while as a private citizen he has done his full share in promoting the welfare of the community, of which he is one of the real pioneers. He was born at Otto, Cattaraugus county, New York, on the 4th of January, 1878, and is a son of James and Ada (Deming) Kinsler. The father, who was a native of Pennsylvania, came to Orange county in 1900 and engaged in the oil business, operating in the old Puente field. His death occurred here in 1919. His widow, who is a native of New York, now lives in Brea. To these parents were born two children, Charles C., and Mary, who is the wife of Harry Thayer, of Costa Mesa, California.

Charles C. Kinsler was reared in Bradford, McKean county, Pennsylvania, and he received his education in the public schools of that city. While still a boy, he went to work for the J. T. Jones Oil Company, of Bradford. At the outbreak of war between the United States and Spain, Mr. Kinsler enlisted in the regular army, joining the Thirteenth Infantry Regiment. He was one of the heroes of San Juan hill, Cuba, in which engagement he served alongside the late Theodore Roosevelt, and received a leg wound during his service. After his discharge from the army, in December, 1899, he came to Olinda, Orange county, California, and entered the employ of the Olinda Oil and Land Company, with which concern he remained about a year. He then moved to Whittier and entered the employ of the Home Oil Company. Afterwards he became major and drillmaster at the State Reform School at Whittier, which position he retained three years. He then went to the Puente oil district and went to work for the Birch Oil Company. In 1912 he bought land in Brea, buying the third lot that was sold in the town and building one of the first homes on the townsite. He filled the office of city clerk of Brea and was the first secretary of the Chamber of Commerce after the organization of that body, but resigned the position in 1920, and engaged in the real estate and insurance business, in which he has continued to the present time. He also served as secretary of the Brea Oil Workers Union. On May 9, 1924, Mr. Kinsler was appointed city judge of Brea and has held that position continuously since. He has shown himself in every respect qualified for this judicial position and his conduct of the court has been very satisfactory.

HISTORY
of
ORANGE COUNTY
CALIFORNIA

By
MRS. J. E. PLEASANTS

BIOGRAPHICAL

VOLUME II

PUBLISHERS:

J. R. FINNELL & SONS PUBLISHING CO.,
LOS ANGELES, CALIFORNIA

RECORD PUBLISHING COMPANY,
PHOENIX, ARIZONA

1931

HISTORY OF ORANGE COUNTY

CHARLES C. KINSLER.—A pioneer of Brea and one of the first men who settled there, Charles C. Kinsler is well known as a prominent citizen who always takes an active lead in the advancement of the interests of his home town.

He is a native of the Empire State, and was born January 4, 1878, at Otto, N. Y., but was reared at Bradford, Pa., where his education was acquired in the public schools of that place, and as a boy he was in the employ of the J. T. Jones Oil Company of Bradford. He is a veteran of the Spanish War, having enlisted as a regular in the Thirteenth United States Infantry when the trouble with Spain arose. One of the heroes of San Juan Hill, Cuba, he served alongside the late Theodore Roosevelt and was wounded in the leg during service. After his discharge from the army he came to Olinda, Orange County, Cal., December, 1899, where he worked for the Olinda Oil and Land Company for one year. He then located at Whittier, and was in the employ of the Home Oil Company at that place. Afterward he became major and drill master at the Whittier State Reform School, retaining the position three years. He then went to the Puente oil district, where he was engaged with the Birch Oil Company. In 1912 he purchased land at Brea, buying the third lot that was sold in the town, and he built one of the first homes on the townsite. He held the office of city clerk of Brea and was the first secretary of the Chamber of Commerce after its inauguration, resigning the position in 1920. At present he is engaged in the real estate and insurance business and is also secretary of the Brea Oil Workers' Union.

Mr. Kinsler's marriage united him with Miss Lena Morse, a native of Vermont, and they are the parents of three daughters: Thelma, Arlene, and Mildred. Fraternally Mr. Kinsler is very prominent in Masonic circles. He is a member of the Blue Lodge and Chapter at Fullerton, the Whittier Commandery, and the Shrine at Los Angeles. He is further affiliated with the Knights of Pythias at Brea, the D. O. O. K. at Los Angeles, the B. P. O. Elks at Anaheim, and is a Modern Woodman. He takes a keen interest in the welfare of Brea, is a dominant factor in its business life, ever on the alert to advance its best interests, and justly enjoys the comforts worthily earned by his labors, and the esteem and respect of his fellow-citizens.

HISTORY OF
ORANGE COUNTY

CALIFORNIA

WITH

Biographical Sketches

OF

*The Leading Men and Women of the County Who
have been Identified with its Growth and
Development from the Early
Days to the Present*



HISTORY BY
SAMUEL ARMOR

ILLUSTRATED
COMPLETE IN ONE VOLUME

HISTORIC RECORD COMPANY
LOS ANGELES, CALIFORNIA
1921

HISTORY OF ORANGE COUNTY

CHARLES C. KINSLER.—A pioneer of Brea and one of the first men who settled there, Charles C. Kinsler is well known as a prominent citizen who always takes an active lead in the advancement of the interests of his home town.

He is a native of the Empire State, and was born January 4, 1878, at Otto, N. Y., but was reared at Bradford, Pa., where his education was acquired in the public schools of that place, and as a boy he was in the employ of the J. T. Jones Oil Company of Bradford. He is a veteran of the Spanish War, having enlisted as a regular in the Thirteenth United States Infantry when the trouble with Spain arose. One of the heroes of San Juan Hill, Cuba, he served alongside the late Theodore Roosevelt and was wounded in the leg during service. After his discharge from the army he came to Olinda, Orange County, Cal., December, 1899, where he worked for the Olinda Oil and Land Company for one year. He then located at Whittier, and was in the employ of the Home Oil Company at that place. Afterward he became major and drill master at the Whittier State Reform School, retaining the position three years. He then went to the Puente oil district, where he was engaged with the Birch Oil Company. In 1912 he purchased land at Brea, buying the third lot that was sold in the town, and he built one of the first homes on the townsite. He held the office of city clerk of Brea and was the first secretary of the Chamber of Commerce after its inauguration, resigning the position in 1920. At present he is engaged in the real estate and insurance business and is also secretary of the Brea Oil Workers' Union.

Mr. Kinsler's marriage united him with Miss Lena Morse, a native of Vermont, and they are the parents of three daughters: Thelma, Arlene, and Mildred. Fraternally Mr. Kinsler is very prominent in Masonic circles. He is a member of the Blue Lodge and Chapter at Fullerton, the Whittier Commandery, and the Shrine at Los Angeles. He is further affiliated with the Knights of Pythias at Brea, the D. O. O. K. at Los Angeles, the B. P. O. Elks at Anaheim, and is a Modern Woodman. He takes a keen interest in the welfare of Brea, is a dominant factor in its business life, ever on the alert to advance its best interests, and justly enjoys the comforts worthily earned by his labors, and the esteem and respect of his fellow-citizens.

written June 5, 1923
Box 186 Brea, Ca.

FAMILY RECORD OF C. C. KINSLER AND FAMILY

Charles C. Kinsler - Date of Birth - Jan. 4, 1878

Lena Kinsler = Date of Birth - 1879 (Maidan Name Lena Morse)

Charles Kinsler and Lena Kinsler married - June 10, 1904 - Barre, Vermont

Parties Present: *by Asa M. Bradley*

Harold J. Morse, Whittier, Ca
Ula A. Darling, Whittier, Ca
Frank McWhorter Whittier, Ca
Laura Morse Vehice, Ca
A. D. Morse Whittier, Ca
Fritz W. Jackson Barre, Vermont
Mrs. Fritz Jackson Barre, Vermont

Soldiers Record:

Spanish ~~American~~ War
Company G. 13th U. S. Infantry - Fort Porter, Buffalo, N. Y.
~~Date~~ enlisted - Sept. 6, 1897
Date Discharged - Nov. 14, 1898

Served ~~with~~ ⁱⁿ the War with Spain with army in Cuba
~~Was in battle of~~ ^{up} San Juan Hill ~~and~~ all other battles and skirmishes during
the war.
Received gunshot wound on San Juan Hill of left leg above knee on July 1, 1898
Received pension in 1899 and still draw the amount of \$12.00 per month - U. S.
Treasurer Dept.

Correct names and dates of birth of children:

Thelma Kinsler October 19, 1906
Arlene Kinsler May 18, 1907
Mildren Kinsler Sept. 25, 1910
Leland Chas. Kinsler - Feb. 19, 1920 (adopted)

Charles Kinsler was born in Otto - Cattaraugus County, New York (1878)

Lena Kinsler Barre, Vermont (1879).

Parents of C. C. Kinsler mother lives at Brea of Lena Kinsler at Venice, Calif.

Charles C. Kinsler was Major and Army drill instructor of the Whittier State
Reformatory School - years 1901 to 1905, Whittier, Ca

Charles C. Kinsler was in hotel and resturant business 1910 to 1913 - Brea, Ca

Charles C. Kinsler was in real estate and insurance 1913 to now Aug 10, 1923.

Worked at various times at the oil industry in all branches

On Oct. 15, 1922 went out on B. G. T. Oil Co. at Santa Fe Springs, Ca on a rotary drilling
crew.

On December 26, 1922 went out for McKeon Drilling Co. at Santa Fe Springs, Ca as cat head
man.

2 - Charles C. Kinsler diary

Quit work for McKeon Drilling Co. and started in real estate business at 129 $\frac{1}{2}$ S. Orange, Brea, Ca Jan 12, 1924.

Was appointed City Recorder, City of Brea May 19, 1924.

Member of Masonic Lodge Fullerton, Ca

Member of Knights of Templar Fullerton

Member Shrine Al Malakiah Los Angeles

Member of B. P. O. Els, 1345 Anaheim, Ca

Member of United Spanish War Veterans - Santa Ana, Ca

Notary Public - 3 terms of 4 yrs each Brea, Ca

Appointed - City Recorder, City of Brea May ^{9th}~~12~~, 1924

Appointed City Judge City of Brea June 1928 - still city judge as of June 10, 1930

On June 10, 1904, in Barry, Vermont, Mr. Kinsler was married to Miss Lena Morse, a native of Vermont and a daughter of A. D. Morse and Laura (Lovering) Morse. Mr. and Mrs. Kinsler are the parents of the following children: Thelma, the wife of Everett Henderson, of Compton, California, and the mother of a son, Richard; Arlene, who died on March 24, 1925, at the age of sixteen years; Mildred, and Leland C., an adopted son.

In his political views Mr. Kinsler is a Republican and has always evinced a deep interest in matters relating to the welfare of the community. He attends the Congregational church. He belongs to Citrol Lodge, F. & A. M., at Brea; Fullerton Chapter, R. A. M.; Fullerton Commandery, K. T.; Al Malaikah Temple, A. A. O. N. M. S., at Los Angeles; Brea Lodge, K. P.; Anaheim Lodge, B. P. O. E.; Ontario Lodge, D. O. O. K., at Ontario, California; the Modern Woodmen of America; the United Spanish War Veterans at Fullerton and Ancient Egyptian Order of Sciots at Fullerton. He is a man of earnest purposes, is sincere and straightforward in all things and is one of Brea's most highly respected citizens.

CHARLES C. KINSLER.

Charles C. Kinsler, who has served in an able and acceptable manner for the past seven years as city judge of Brea, is one of that city's representative men, having long been prominent in business and official life, while as a private citizen he has done his full share in promoting the welfare of the community, of which he is one of the real pioneers. He was born at Otto, Cattaraugus county, New York, on the 4th of January, 1878, and is a son of James and Ada (Deming) Kinsler. The father, who was a native of Pennsylvania, came to Orange county in 1900 and engaged in the oil business, operating in the old Puente field. His death occurred here in 1919. His widow, who is a native of New York, now lives in Brea. To these parents were born two children, Charles C., and Mary, who is the wife of Harry Thayer, of Costa Mesa, California.

Charles C. Kinsler was reared in Bradford, McKean county, Pennsylvania, and he received his education in the public schools of that city. While still a boy, he went to work for the J. T. Jones Oil Company, of Bradford. At the outbreak of war between the United States and Spain, Mr. Kinsler enlisted in the regular army, joining the Thirteenth Infantry Regiment. He was one of the heroes of San Juan hill, Cuba, in which engagement he served alongside the late Theodore Roosevelt, and received a leg wound during his service. After his discharge from the army, in December, 1899, he came to Olinda, Orange county, California, and entered the employ of the Olinda Oil and Land Company, with which concern he remained about a year. He then moved to Whittier and entered the employ of the Home Oil Company. Afterwards he became major and drillmaster at the State Reform School at Whittier, which position he retained three years. He then went to the Puente oil district and went to work for the Birch Oil Company. In 1912 he bought land in Brea, buying the third lot that was sold in the town and building one of the first homes on the townsite. He filled the office of city clerk of Brea and was the first secretary of the Chamber of Commerce after the organization of that body, but resigned the position in 1920, and engaged in the real estate and insurance business, in which he has continued to the present time. He also served as secretary of the Brea Oil Workers Union. On May 9, 1924, Mr. Kinsler was appointed city judge of Brea and has held that position continuously since. He has shown himself in every respect qualified for this judicial position and his conduct of the court has been very satisfactory.



*WE ARE PROUD TO ANNOUNCE THE
INDUCTION OF
THE KINSLER HOUSE
INTO THE CITY OF BREA'S
HISTORIC RESOURCES REGISTER.*

*THE CITY OF BREA REDEVELOPMENT AGENCY
CORDIALLY INVITES YOU TO ATTEND A
CEREMONY AT
258 SOUTH REDWOOD AVENUE, BREA
ON THURSDAY, MARCH 15, 2001 - 4:30 P.M.*

City Council

Roy Moore
Mayor

Marty Simonoff
Mayor Pro Tem

Tim Harvey
Councilmember

Bev Perry
Councilmember

Steve Vargas
Councilmember

Historical Society wants to preserve 1st city clerk's house

By Cerise A. Valenzuela
The Orange County Register

BREA — If members of the Brea Historical Society were willing to lie in front of the bulldozers to save any historical house downtown, it would be the Kinsler House on Orange Avenue.

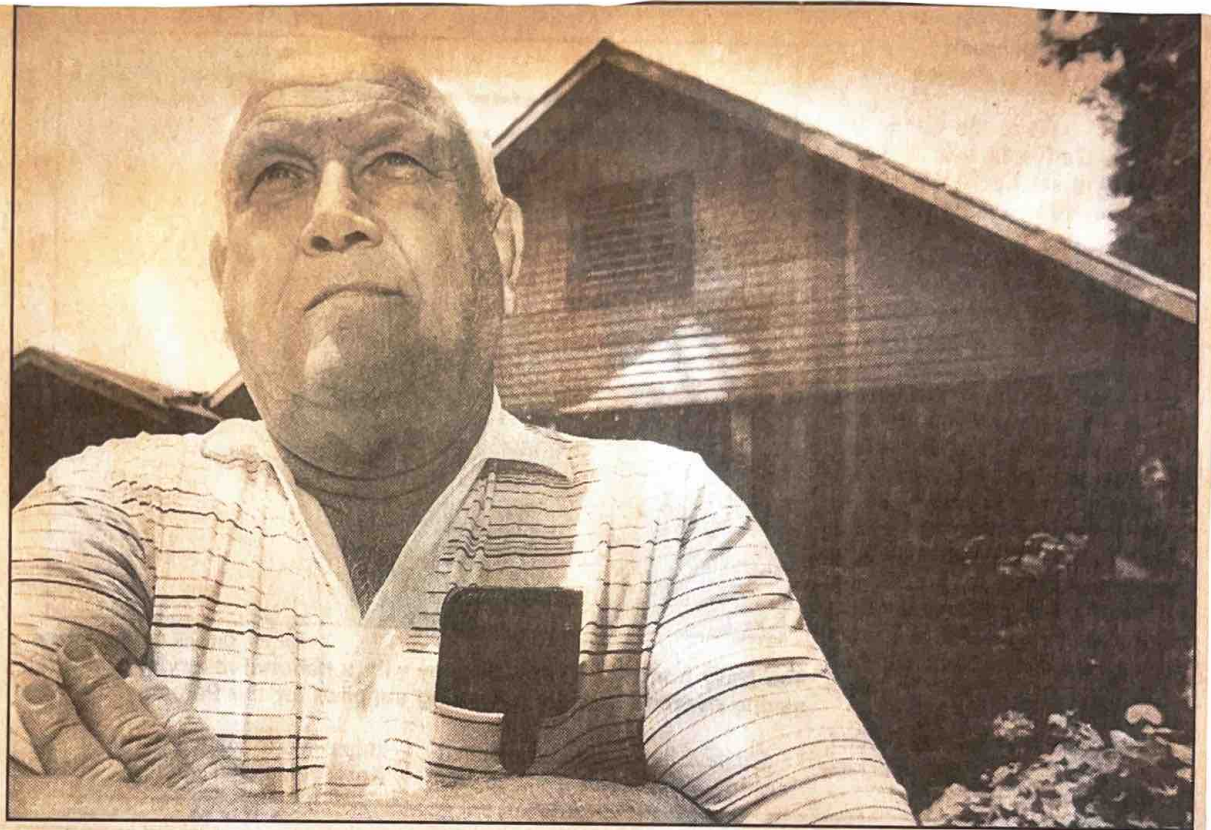
Nothing about the haggard, single-story beige house with brown trim grabs the attention of passers-by, except perhaps the gleaming tin foil that lines the three front windows for warmth. But its modest appearance is deceptive, society vice president Brian Saul said.

"There's so much of Brea's history in that house," Saul said. "We want to make sure people of Brea have a chance to learn it."

The single-story, two-bedroom wood-frame house, built in 1912, was the home of the city's first census taker and city clerk, Charles Kinsler, who took the city's first population count in 1916. A year later, residents voted 204-45 to incorporate.

Kinsler was a major in the Army and a drill instructor at the Whittier State Reform School in 1901-05. He drove the golden spike into the last rail of the Pacific Electric Railway in 1903, at Philadelphia Street and Greenleaf Avenue in Whittier.

Kinsler also managed the Brea Hotel, then called the Kinsler Hotel. He ran a restaurant in the same building on South Brea Boulevard during the 1920s. He was appointed the city's judge in 1924 and was a volunteer firefighter. He died in 1934.



Leland Kinsler stands in front of his childhood home, slated for demolition. He sold the Brea house years ago.

Ed Compean/The Orange County Register

The historical society has asked the city to restore the house and move it to the city's historic residential row on Redwood Avenue. The house is typical of other Brea pioneer houses in that it is of simple design and served as a combination home-office.

Kinsler added a shacklike office to the front of his house in 1931, when he was too weak from a heart condition to walk to his office in the in the Oilfields National Bank (now the Gobar building) at 201 S. Brea Blvd.

Half the front porch was enclosed in the early 1920s to serve as

a beauty salon for Kinsler's daughter Thelma, a hairdresser.

Charles and Lena Kinsler had two other daughters, Mildred and Arlene, and a son, Leland. Arlene Kinsler died when she was 16; the other three remain alive.

Leland Kinsler, 71, lived in the house on Orange Avenue until he sold the property 10 years ago. It now is rented.

He said the house might be less important to the city than the history behind the man who lived in it.

"I don't like the thought of them tearing the house down at all, but the house is immaterial to me," the

retired machinist for La Habra-based Chevron Oil Co. said.

"I have my own museum here, in my house" on Magnolia Avenue, Kinsler said.

Two large walls are covered with photos of his father and of old Brea. His bookshelves are stacked high with old telephone registries and notebooks that belong to his father.

One of his most guarded possessions is a scrapbook his father put together in the early 1920s. Tattered family snapshots are pasted on brown butcher paper, next to tales of downtown Brea in his father's handwriting.

Copy

(Copy)

CITY COUNCILMEN

L. A. HOGUE, MAYOR
O. S. CLOSE
W. C. BALDWIN
FRANK SCHWEITZER
J. D. WAKEMAN

City of Brea

REGULAR MEETINGS FIRST AND THIRD WEDNESDAY NIGHTS
OF EACH MONTH

BILLS CONSIDERED ONLY FIRST REGULAR MEETINGS OF EACH MONTH

Brea, California

CITY OFFICERS

GRACE L. MAY, CLERK
WALKER C. DAVIS, TREASURER
ALBERT LAUNER, ATTORNEY
R. W. PHELPS, ENGINEER
W. H. WILLIAMS, CHIEF OF POLICE
C. C. KINSLER, CITY JUDGE
E. G. BOXALL, STREET AND
WATER DEPARTMENT

OFFICE OF
CITY JUDGE

State of California,))
County of Orange,) SS
City of Brea,)

I, Grace L. May, City Clerk and Ex-Officio
Clerk of the Board of Trustee's of the City of Brea, do hereby
certify that at a meeting of said Board held on the 20th day of
April, 1933, Charles C. Kinsler was appointed
City Judge and Fire Chief of the City of Brea, California.
for the term of two years, or until the pleasure of the Board
of Trustee's.

Grace L. May
City Clerk of the City of Brea, Calif.

Oath of Office

State of California.))
County of Orange) SS.
City of Brea,)

I, Charles C. Kinsler do swear to support the
Constitution of the United States of America, the constitution of
the State of California, and to perform the duties imposed on me
as City Judge and Fire Chief, of the City of Brea, California,
to the best of my ability, so help me God.

Charles C. Kinsler
City Judge and Fire Chief.

Subscribed and sworn to before me

This 21st day of April, 1933.

Grace L. May
City Clerk of the City of Brea, Calif.

TRAIN NOT STANLEY

One of Brea's First Families Arrived From East in Steam Car

BREA—Since there were no airplanes in those days, or very few, newly weds, Mrs. and Mrs. C.C. Kinsler came to Brea from Connecticut 54 years ago via Steam Cars.

Steam cars? "Sure," says 86-year-old Mrs. Kinsler. "Made the trip in six days. But steam cars? "Yes," she said, "Course they did break down quite frequently."

Steam car like in Stanley Steamer? "No," says Mrs. Kinsler, "Steam car like in railroad train." Oh.

The Kinsler's were one of the first families to settle in Brea. They purchased two lots of land from a real estate office which was housed in a tent.

There first home was built in 1911. It still stands next to the present home which was built a year later at 129 S. Orange Ave.

CAN'T TALK

She has a neighbor who lives next door. They have been living next door for over 50 years but rarely speak to one another. The neighbor is Spanish-American and Mrs. Kinsler says the only reason they don't speak to one another is because they can't understand each other. "Must be the difference between my Yankee accent and her Spanish accent," she muses.

Mrs. Kinsler remembers the days of 1912-1915 when nearly the entire town used to go into

Los Angeles to watch the burlesque Saturday night. "We used to make the trip in an hour," she remembers. An hour? "Yes, we all went by street car and it would always wait until the show was over to bring us back."

Los Angeles in those days could claim a population of a half-a-million persons.

SHOPPED ELSEWHERE

Most of the shopping was done in the two large neighboring cities to the south, Anaheim, 5,000 and Fullerton, 4,000 persons. The grocery shopping was done at Stearns-Goodman in Fullerton.

Mr. Kinsler, who died in 1933, was the city's first city clerk. He also served as fire chief and for 10 years was recording judge. He was a member of the elementary school district board of trustees.

Both he and Mrs. Kinsler circulated petitions for Brea's incorporation. There were 732 inhabitants of the city at that time, Nov. 27, 1916.

Today Mrs. Kinsler is recovering from an ear infection which has disturbed her equilibrium. As a result she can not get around too well and spends most of her time watching television.

"I like all the programs," she says, "But things are not quite the way they used to be—everyone I've known is gone now."



129

ANOTHER ERA — Brea's Mrs. C. Kinsler waves from her 53-year-old home on 129 S. Orange Ave. She has been a resident of Brea since 1911, coming from Connecticut with her husband. The home, which stands next to her original home, was built in 1913.

(News Tribune Photo)

Prior to coming to this city the Mitchells had lived back in Pennsylvania until 1910, when they made the trek to California and located to start with in Coalinga. Then they came to Brea, stopping in Fullerton, however, for a three months residence until arrangements could be made here.

House Being Built

Mrs. Mitchell remembers today that there were many houses in course of construction and they had built their own home on Madrona avenue, where she and her daughter, Miss Kathryn Mitchell, are still living.

Mrs. Mitchell does not recall any observance whatever of Christmas day, excepting that each family did the best it could to provide some celebration for itself. That is what the Mitchells did.

"At that time," says Mrs. Mitchell, "there were no paved streets and dust storms were bad. The first big asset to the community was the paving of Pomona avenue. During the winters, prior to the streets being paved, the muddy streets were almost impassable."

Charles Kinslers

Came From Olinda

Some of the families, who came to Brea in those days — back in 1911 — had lived in the Olinda community, and among those were the Charles Kinslers. Olinda has seen the first oil production in this locality and the settlement there was the first to spring up. And many families, where the men were employed in the oil fields, located in Olinda. Some of them of course are still there. Some came into Brea or went to other points.

Among the first day Olindans to come were the Charles Kinslers. They had lived there for six months and then decided to move here. They had the Brea hotel, which was a prominent institution throughout this oil area and the center of much of the social activities of the community. The most of the first day folks here had meals with the Kinslers.

Mrs. Lena Kinsler, who with her family is still living at 129 South Orange avenue, says they spent their first Christmas here in 1911. She also has now lived here for twenty-six years. She remembers also there were only six homes completed here when they arrived although others were building. The Kinsler's home, where she continues to live, was one of only two in that locality.

"There was not much Christmas observance that year," says Mrs. Kinsler, "mostly because of there being such a limited population. We did not have any guests at dinner that day, just the family."

"There was no Christmas observance in the churches, for the reason there were as yet no churches — no place to hold a Christmas program. However, church meetings or religious gatherings were just beginning to be organized."

The Harkeys Had A

Family Dinner

Mrs. Mittie Harkey, who with her husband came to Brea on October 11, 1911, says there were but two finished houses that she remembers, when they arrived here. One was the Kaufman home on Walnut avenue and the other that of W.B. Yates, who has been given the distinction of having built the first residence here.

"I do remember also," says Mrs. Harkey, "that the while the Kaufman home was painted red, the Yates residence had been given a green color." This made the two stand out particularly in the community.

Mrs. Harkey, living here at 219 West Birch lane, says there were other houses being built here at that time, and they continued being built right along thereafter.

"We had a Christmas observance all of our own in our house here," remembers Mrs. Harkey. "We lived then in a house directly across from the lumber yard on East Ash street. We lived there for two months, prior to having our own house completed, and we spent that Christmas there."

"We had a nice Christmas day, with a dinner and gifts, of course, but only my husband and our daughter, Hortense, were present. I mean we had no outside guests."

From Indian Territory

Mrs. Harkey is a native of Oklahoma or what was Indian territory at that time, and she came directly to California from that state. A resident here now for over thirty-six years (sic), she recalls the first days' experience with much pleasure. The pioneering did not bother her, for she had been accustomed to that type of life in the Territory.

Mrs. Harkey has been a widow for seventeen years, but has a daughter living in Huntington Park and another in the old home town of Ardmore, Oklahoma.

Mrs. Harkey says she came to California with her husband and children in 1906 from Ardmore, not long after the San Francisco earthquake had happened. They came directly to Orange county, and she had lived in the county ever since. She remembers that, not long after locating in this county, the family drove overland to Imperial valley and that the roads were so rough, following a trail, that it required eleven days to make the trip one way.

TRAIN NOT STANLEY

One of Brea's First Families Arrived From East in Steam Car



ANOTHER ERA — Brea's Mrs. C.C. Kinsler waves from her 53-year-old home on 129 S. Orange Ave. She has been a resident of Brea since

1911, coming from Connecticut with her husband. The home, which stands next to her original home, was built in 1913.

(News Tribune Photo)

BREA—Since there were no airplanes in those days, or very few newly weds, Mrs. and Mrs. C.C. Kinsler came to Brea from Connecticut 54 years ago, via Steam Cars.

Steam cars? "Sure," says 86-year-old Mrs. Kinsler. "Made the trip in six days. But steam cars? "Yes," she said. "Course they did break down quite frequently."

Steam car like in Stanley Steamer? "No," says Mrs. Kinsler. "Steam car like in railroad train." Oh.

The Kinslers were one of the first families to settle in Brea. They purchased two lots of land from a real estate office which was housed in a tent.

There, first home was built in 1911. It still stands next to the present home which was built a year later at 129 S. Orange Ave.

CANT TALK

She has a neighbor who lives next door. They have been living next door for over 50 years but rarely speak to one another. The neighbor is Spanish-American and Mrs. Kinsler says the only reason they don't speak to one another is because they can't understand each other.

"Must be the difference between my Yankee accent and her Spanish accent," she muses.

Mrs. Kinsler remembers the days of 1912-1915 when nearly the entire town used to go in to

Los Angeles to watch the burlesque Saturday night. "We used to make the trip in an hour," she remembers. An hour? "Yes, we all went by street car and it would always wait until the show was over to bring us back."

Los Angeles in those days could claim a population of a half-a-million persons.

SHOPPED ELSEWHERE

Most of the shopping was done in the two large neighboring cities to the south, Anaheim, 5,000 and Fullerton, 4,000 persons. The grocery shopping was done at Stearns-Goodman in Fullerton.

Mr. Kinsler, who died in 1933, was the city's first city clerk. He also served as fire chief and for 10 years was recording judge. He was a member of the elementary school district board of trustees.

Both he and Mrs. Kinsler circulated petitions for Brea's incorporation. There were 732 inhabitants of the city at that time, Nov. 27, 1916.

Today Mrs. Kinsler is recovering from an ear infection which has disturbed her equilibrium. As a result she cannot get around too well and spends most of her time watching television.

"I like all the programs," she says. "But things are not quite the way they used to be—everyone I've known is gone now."