

Mape Sells Interest In 2 Brea Industrial Plants

By KATIE DEAN

Star-Progress Staff Writer
BREA — BMA (Business Men's Assurance) Corp. of Kansas City Mo. has taken over complete ownership and development of two major industrial projects, Pacific Intrapak and Brea Industrial Complex, both which had been joint ventures between BMA and Mape Industries, officials said Wednesday.

According to Steve Moore, general manager of the Pacific Intrapak project, the change "shouldn't result in any problems." Moore, who had been with Mape Industries for over two years, is now employed by BMA.

Moore indicated that Mape sold its share in both projects because of "business dealings elsewhere." He added that the firm is still active in the Brea

area, but doesn't own any property at the present time.

City Manager Wayne Wedin confirmed that the city is officially aware of the negotiations going on and "in no way do we see this as something negative." He added that such changes in ownership are not unusual.

"We have appreciated the working relationship we have had with BMA and we will continue to work with them," Wedin added.

When completed, the 110 acre Pacific Intrapak project will be the nation's largest, most comprehensive and advanced food processing, warehousing and distribution center. Located on Imperial Highway between Valencia and Kramer Boulevard, the \$75 million development will provide 2,000 to 4,000 jobs for skilled and semi-skilled workers.

Presently a 100,000 square foot controlled temperature warehouse is in operation. Moore said he has been negotiating with prospective tenants and hopes to start construction on other buildings in the near future.

The 35 acre Brea Industrial

Complex, located on Lambert Road and Oak Place includes buildings for lease or sale. Three buildings have been completed in the first tract. Two additional lots have been sold with three buildings in the planning phase.

BMA Corporation is an international diversified company that includes two major subsidiaries, including a real estate corporation that is involved a number of ventures in condominiums, hotels, apartment complexes, industrial projects and other retail, residential and commercial properties throughout the United States.

The corporation's largest subsidiary is BMA Company of America, a major life, health and group insurance company

operating in 48 states, United States territories and Australia.

Originally, BMA had been the financial partner in the Pacific Intrapak project, with Mape Industries as the developer.

BMA has several regional offices including one in Palo Alto,

Park Work Starts

BREA — City and county officials will be on hand at groundbreaking ceremonies for Carbon Canyon Regional Park Thursday at 11 a.m.

The groundbreaking marks the start on the second regional park within North Orange County's 3rd Supervisorial District. Last week, Ted Craig Regional Park was dedicated and opened to the public.

"This will be a very high activity park," Rhoads said. Included are plans for a small man-made lake, runways for remote control and self-controlled model airplanes, tennis courts, archery ranges, equestrian and biking trails as well as picnic areas and hiking trails.

Rhoads says the runway for remote-control model airplanes will be the only one of its kind in the area and will probably attract state and national contests.

The \$2 million dollar park will be jointly constructed and paid for by the county and the U. S. Army Corps of Engineers, which owns most of the park land.

The county bought four parcels of land above the high-water mark on which to locate permanent buildings.

Phase two of park construction will expand the facility to 309 acres. The regional park might eventually include Telegraph Canyon, depending on recreational needs.

NEWS OF BRETA
on this page



A Freedom Newspaper

Good Evening!

66TH YEAR
 NO. 118
 ONE SECTION
 (16 PAGES)

The Weather

Clear, except for a chance of coastal fog and low clouds very late tonight, clearing to sunny Wednesday and warm. Highs Wednesday 74 to 84. Lows tonight 57 to 62.

Quotable Quotes

Praising what is lost makes the remembrance dear. — William Shakespeare, English playwright (1564-1616).

Of Historical Note

Three father-son combinations have served Brea on the City Council, Isaac Craig and son, Ted; William D. Steffer and son, Donald; and Frank Schweitzer Sr. and son, Frank Jr.

Index

- Ann Landers.....A-16
- Bridge.....A-7
- Business.....A-6
- Classified.....A-13, 15
- Comics.....A-14
- Crossword.....A-15
- Editorial.....A-12
- Funeral Notices.....A-13
- Horoscope.....A-7
- House Call.....A-7
- Senior Life.....A-7
- Sports.....A-10, 11
- Television.....A-13
- Theaters.....A-14
- Today's Lifestyles.....A-8
- Tween 12 & 20.....A-16

Inside The Daily Star-Progress

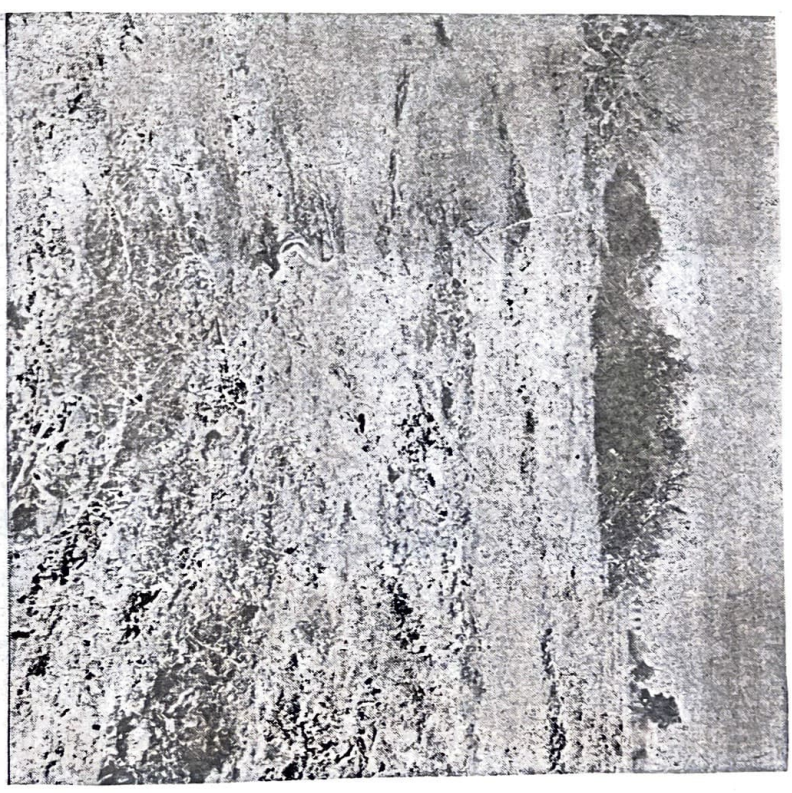
- Americans Dreaming Again.....A-6
- Corona, Juror Treated.....A-7
- Challenge To "Victim's Bill".....A-16



TOUR RESERVOIR — Milo Keith, Brea City engineer (left in dark suit), explains to members of the Brea Rotary club what the new city reservoir at Lambert and Berry means to the city as he takes the club on a tour around the rim of the 30 million gallon facility. The photo was taken from near the bottom of the pit, shooting up.

toward the rim. Keith said the reservoir is not a cure-all to Brea's water problem, but will serve as a backbone for the entire system. He said new transmission and fire lines are needed in some areas of the city to bring the system to one of more efficiency.

(Photo by Joannia Malos)



PASSING LANDMARK — Another orange grove is a thing of the past where once the entire area north of Brea was planted to citrus. Shown above, the grove on Imperial Hwy. at Arovista St. has been pulled out. Another grove at Imperial and Puente St. has been replanted, but owners

said the one above will remain vacant until development later. They said the grove no longer paid its way because most of the trees were dead from slow decline. The entire area is zoned for industrial. Note American's new plant in the background. (News Tribune Photo)



FOUR RESERVOIR — Milo Keith, Brea City engineer (left in dark suit), explains to members of the Brea Rotary club what the new city reservoir at Lambert and Berry means to the city as he takes the club on a tour around the rim of the 30 million gallon facility. The photo was taken from near the bottom of the pit shooting up

toward the rim. Keith said the reservoir is not a cure-all to Brea's water problem, but will serve as a backbone for the entire system. He said new transmission and fire lines are needed in some areas of the city to bring the system to one of more efficiency.

(Photo by Joanna Matos)



PASSING LANDMARK — Another orange grove is a thing of the past where once the entire area north of Brea was planted to citrus. Shown above, the grove on Imperial Hwy. at Arivista St. has been pulled out. Another grove at Imperial and Puente St. has been replanted, but owners

said the one above will remain vacant until development later. They said the grove no longer paid its way because most of the trees were dead from slow decline. The entire area is zoned for industrial. Note American's new plant in the background.

(News Tribune Photo)

Four Bred

Trustees recalled

Four Brea-Olinda Unified School Board members were served with recall charges at Wednesday's night school board meeting.

Notices were given to board president Clea Harder, and trustees Shirley Beach, Charles Bates, and Bud Timblin by Forrest Darling, spokesman for the group of parents who opposed the selling of the district's buses in September.

Some of the recall charges include their failure to develop long-range plans, lack of policy for financing, over-budgeting, projected state and local tax income for the district in 1977-78 by 701 students, and actions resulting in dissention among the teachers.

The trustees named in the petition have seven days to respond to the charges listed in the recall notices, once the notices are filed. Darling filed the notices with the county Monday.

Darling said the group's goal was to place new members on the school board. When questioned if Darling planned to run for the board, he responded that he was not a political person, and he would like to see people run who were knowledgeable in the administrative and financial aspects, but he would make a decision soon. Ralph Sage, another member of the

committee called

"BREANS," said he hadn't given it any thought and it was way too early in the game to make such a decision. William Strowbridge said he was currently more interested in the planning commission than the school board, and someone may be appointed to a committee to report to the planning commission representing Olinda. Garrett Diltmar said he had been

approached to run again, but pointed out that several board members' terms will be up in November, so some people running could only be on the board for six months, so he doubted if he would consider running for a board position. Randy Brooks said he was thinking about running for the board, but wanted to consider the expense.

Forrest Darling said he has received good response to his recall campaign, but he needs all the help he can get. He expects to talk to various groups and clubs in the community.

The recall committee must gather 2,500 registered voters signatures within the school district. Forrest Darling said he feels he will have no trouble getting the signatures and expects a recall election next Spring.

In response to the recall charges, Shirley Bea ch,



(News-Times Photo by Susan Goede)

SPOKESMAN INTERVIEWED - Larry Carroll of Channel 7 news listens as Forrest Darling expresses his views in light of the recall of four Brea trustees. "The district is in a mess," Darling noted.

president of the Orange County School Boards Association said, "I am certainly not upset by the Notice of Intention to Recall. To best describe my feelings I would have to say they are rather mixed. I see humor in the situation, but also, it is rather sorrowful.

"The humor being the particular four board members they chose to recall. I predicted who they would be when it was stated there would be only four rather than six selected for this dubious honor. The changes I find humorous also. Some are so broad and others very misleading and untrue.

"The sorrow I feel is the timing of this action. It will slow down the process of obtaining funds through Redevelopment C that would be used to alleviate the problem that have these people so upset, that problem being a need for a school in their area for their children to attend. Also, some people can be so easily taken in when they are in a state of emotion. These people were originally upset about the busing issue, but since they were joined by a small segment of disgruntled voters from the last election, the charges have expanded. The voters of this school district did not want this small segment to get control of the board at that time. I am assuming this group feels the time is ripe not to try again. Spending precious educational dollars on a special election is repulsive to me but certainly points out

Bud Timblin said there was no substance to the recall charges which are a matter of public records. The charges are based on untrue facts. The recall is politically motivated. The proponents stated to the media they are recalling the board because they sold the buses. Yet they are recalling a member who voted to keep the buses, and two members who voted to sell the buses.

Clea Harder, president of the board of trustees said, "I absolutely refuse to submit to a minority of self-serving individuals who seek to undermine one of our outstanding public school systems without any positive ideas for improvement. I urge Breans to find out the facts themselves and to help us continue to raise the achievements of our students." Harder also commented on the charge concerning academic achievement, noting tests scores have gone up each year she has been on the board. "The expected achievement level is at 50 percentile, and our classes at

all levels have consistently scored from the 70th to the 90th percentile," Harder noted. Warren Johnson, chairman of the transportation committee, appointed by the board to solve some of the problems, said he has withdrawn his support for the movement because some of the charges are inaccurate.

BREA NEWS TIMES
NOV. 15, 1978

"YOUR PERSONALIZED SHOPPING PLACE"

OVER 30 SHOPS TO SERVE YOU

Located At The Northeast Corner Of
The New Orange (57) Freeway at Imperial Hwy.
ACROSS FROM BREA MALL

Discover exclusive shops, boutiques, parlors, new fashions, creative gift ideas, Entertainment, friendly faces, all surrounded by the beautiful outdoors of your plaza. Enjoy fine foods for lunch or dine in elegance.

4 Wednesday, November 1, 1978 OUTLOOK

Brea Plaza proves amazing

business stimulator for area

Not only did Brea Plaza introduce Northern Orange County to its significant new role as a regional commercial entity, but it has enjoyed unparalleled success as a traffic attention compeller which has generated an amazing business momentum.

According to Tim Von-Delt, president of the Plaza's merchants association and a charter member of the complex, the new shopping center formally opened in the spring of 1977, almost immediately attaining 100 per cent occupancy.

Brea Plaza is strategically located at convenient outpouring points of the Orange (No. 57) Freeway, being at the northeast corner of the freeway and Imperial Highway, just off Associated Road.

The Plaza was an instant success as it lived up to its promise of being composed of "warm, friendly, community-oriented merchants" who were dedicated to placing their major emphasis on "personal service to the people."

Customers already have

noted a situation that may well become an unwritten slogan...Brea Plaza is "small enough to know you, yet complete enough to serve you!"

Von-Delt acknowledges, Brea Plaza covers a 25-acre area, featuring close to a million square feet of well laid out parking accommodations, attractively accentuated with landscaping design.

There are more than 30 facilities, impressively anchored by such majors as a 24-hour Albertson's super food store, Thrifty Drug regional headquarters of Allstate (financial service arm of Sears), 4300-seating capacity Mann Theaters and a financial center including Home Bank and Financial Savings.

One of the more remarkable things about the center is that it features Brea's finest restaurants, including four major units among seven sit-down eating places.

Further among its shops are men's and women's stores, a men's specialty clothing shop, a large

gourmet spirits shop, shoe repairs, dry cleaners, gift and card shops, electronics supply store, a tobacconist, a soon-to-open custom woodwork furniture store, hair styling and beauty supply facilities, and such offices as professional utility, real estate and travel facilities.

Current officers of the Brea Plaza Association are Tim Von-Delt, president; Carl Fisher, vice president; Ron Johnson, secretary, and Louis Scharrota, treasurer.

The entire center prides itself on retaining a status in keeping with the community orientation it emphasizes. For instance, many of the shop-keepers and employees are deeply involved in community affairs.

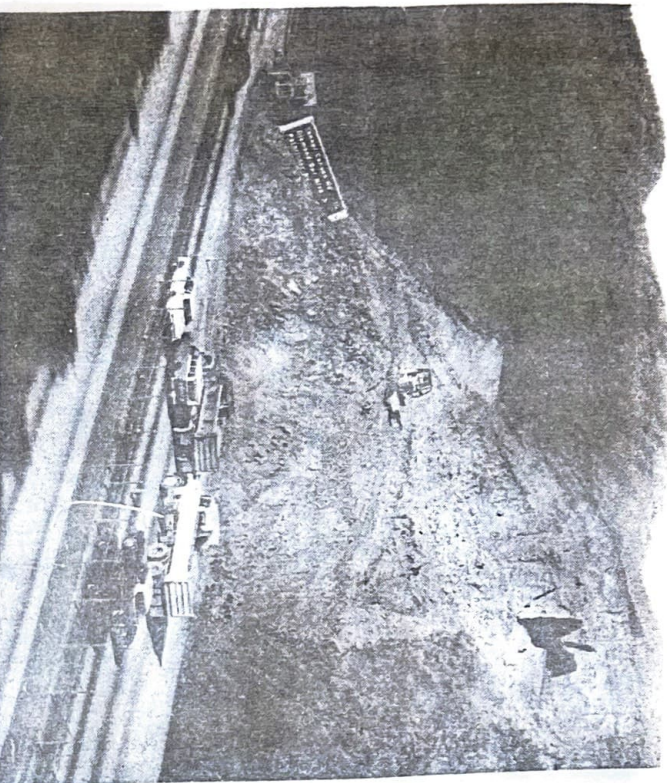
Their memberships include such organizations as the Chamber of Commerce, Rotary International, Kiwanis Club, Lions Club, several fraternal groups, and they usually play an active role. Brea Plaza tenants also maintain a vivid interest in youth activities.

Wednesday, April 4, 1979



MUD SLIDE — Northbound traffic was blocked last Tuesday night by a mud slide that closed the two outside lanes of the Orange Freeway, just north of Lambert Road in Brea, according to California Highway Patrol. Traffic was delayed for several days while the California Transportation Department removed the dirt. A rain-soaked hill gave way during the storm after more than an inch of rain fell in Brea. A directional sign was damaged by the dirt slide, authorities reported.
(News-Times Photo by Gert W. Eichrodt)

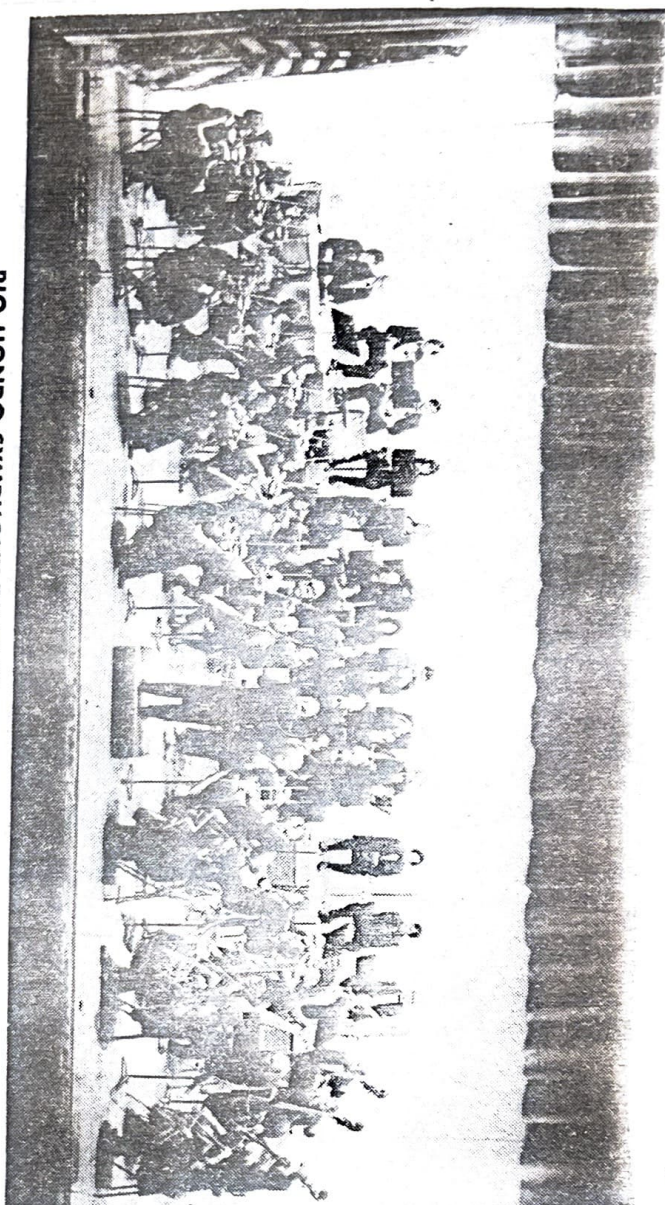
Wednesday, April 4, 1979



MUD SLIDE — Northbound traffic was blocked last Tuesday night by a mud slide that closed the two outside lanes of the Orange Freeway, just north of Lambert Road, in Brea, according to California Highway Patrol. Traffic was delayed for several days while the

California Transportation Department removed the dirt. A rain-soaked hill gave way during the storm after more than an inch of rain fell in Brea. A directional sign was damaged by the dirt slide, authorities reported.

(News-Times Photo by Carl W. Eichrodt)



RIO HONDO SYMPHONY TO PLAY BICENTENNIAL CONCERT

Bicentennial Concert Sponsored in Brea

BREA — The City of Brea's Bicentennial Committee is sponsoring a bicentennial concert to be held on April 3, at 3 p.m. at Brea-Olinda High School Auditorium, 803 East Birch Street.

The outstanding Rio Hondo Symphony Orchestra will perform a medley of arrangements including "The Royal Fireworks Suite," "Concerto," "Fugue and Chorale on Yankee Doodle," "Mississippi Suite," and "The Stars and Stripes Forever."

Admission is free to the general public; no tickets necessary. Doors will open at 2:30 p.m.

The Rio Hondo Symphony is in its third season as a community symphony orchestra. It was originally known as the Whittier Symphony.

Members of the orchestra who live in the north county area are Marjorie Greek, Brea; Stephanie Ives and David Turovsky, La Habra; Linda Owen and Brian Furione, Placentia; Vic Sagerquist, Fullerton; Richard Cruz and Lou Anne Barth, Fullerton College faculty.

Further information regarding the concert is available from the Community Services Department, City of Brea, 529-4951, Ext. 25.

Daetweiler, Schweitzer Coordinate Bicentennial

BREA — Heading up Brea's Bicentennial Committee are Laveta Daetweiler and Frank Schweitzer, who are in charge of coordinating the many events and activities planned for the coming year.

"At a time in history when society is concerned with so many problems, we have been given a unique opportunity to reaffirm our patriotic and

faith in our country, and a chance to focus on those principles and objectives set forth by our forefathers who made our nation great," Mrs. Daetweiler emphasized.

"A three-pronged celebration is being planned for the coming year," she explained. "To honor the past (Heritage), Celebrate the present (Festival) and Look to the future (Horizon). The

citizens of Brea can make this possible through community involvement and dedication," she added.

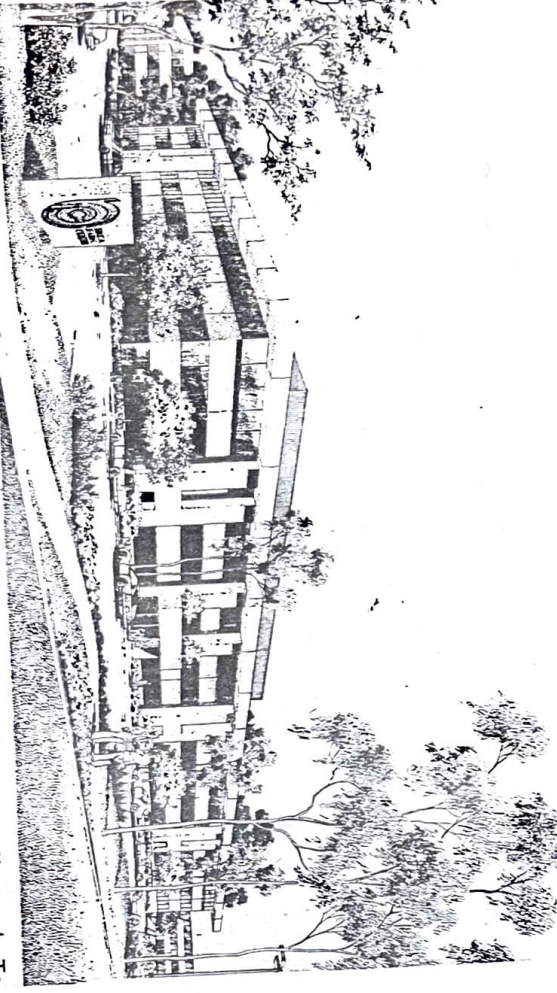
Some of the activities and projects planned for the Bicentennial year in Brea include the gazabo in the park, the 1,776 tree project, the reenactment of the Don Gaspar de Portola Trek, Brea's Birthday Party, wagon train visit, U.S. Armed Forces Caravan visit, youth involvement day, Bicentennial Sunday, 1876 Fourth of July family picnic and fireworks display and the sounds of freedom.

The committee is also planning to carry out the continuation of the oral history tapes, a Bicentennial symposium, concert, dedication of the Junior High Park, Bicentennial gardens, merchants window display, historical slide presentation for the school district, festival of arts, Mexican heritage and cultural display, essay contest, placement of the Liberty Bell and the Bicentennial Concert in the Park.

"We hope the entire community will get the spirit, get involved and join us in our wish for a Happy Birthday USA from the people of Brea."

Brea's Balanced Growth Program Showing Results

BY RUTH BYRON



LARGEST BUILDING—St. Paul Fire and Marine Insurance Co. will have its Southern California headquarters in this 93,000-square-foot L-shaped office building, the largest of three structures being built in Brea Park Centre, called

North Orange County's largest office park. To be completed in April, the building will be the second to be ready for occupancy in the \$10-million project being developed by H. T. Greene & Associates on an 8.65-acre site in Brea.

Black gold put Brea on the map. Commerce is expected to keep it there.

Except for an oil fire that shot flames into the air for days in 1926, Brea (meaning "tar" or "asphalt" in Spanish) was a sleepy little town from the time it was incorporated in 1917 until the 1960's. Then city officials adopted a master plan dedicated to balanced growth and initiated a program to court developers and financiers—a tour that last October attracted 400 persons.

The efforts have paid off. In fewer than 20 years, the population has nearly quadrupled, homes have been constructed where orange groves flourished, and industry has risen on former oil company land.

Brea Park Centre is the latest project. Called the largest office park in North Orange County, the \$10-million, 172,000-square-foot development is also symbolic of Brea's rapid growth. More than a million square feet of commercial space and more than two million square feet of industrial space is under construction there now.

"And we anticipate generating 7,500 to 10,000 new industry jobs within the next five years," Wayne D. Weidman, Brea city manager, said. Situated on 8.65 acres at the southeast corner of Imperial Highway and Kraemer Blvd., Brea Park Centre is being built on property once owned by Union Oil Co. "But it was not a producing oil field," said Weidman, who explained that many petroleum firms

have "large acreages in their inventories."

"Most of the major oil companies in the world are located here," he added. Owned and developed by H.T. Greene & Associates, Brea Park Centre will consist of three 3-story, elevator-served buildings ranging from 30,000 to 93,000 square feet in size. Two of the buildings are under construction, including the largest—an L-shaped structure that will house the Southern California headquarters of the St. Paul Fire and Marine Insurance Co.

The first building will be ready for occupancy Dec. 1, and St. Paul Insurance Co. is scheduled to move into a third of the largest building in April. Leasing is being handled by Grubb & Ellis Commercial Brokerage Co.

The McDonald Interests is building the project with interim financing provided by Lloyd's Bank and permanent financing arranged by Wells Fargo Mortgage Co. and the Mutual Life Insurance Co. of New York.

Designed by McClellan Cruz Gaylord & Associates of Pasadena, Brea Park Centre will feature 20-foot wide landscaped setbacks that will emphasize the garden setting of the low, undevastated structures. Exterior columns grouped in pairs will form a strong vertical element to complement the horizontal line while 6-foot, 8-inch overhangs will give shade and provide a strong visual image. Solar bronze glass and stucco in brown and beige will mark the exterior.

Complying with the city's request that developers include an artwork in every major project, Greene & Associates has decided to commission a sculpture for Brea Park Centre.

"We are seeking a prominent sculptor to design a contemporary piece that will be compatible with the architecture," Lisa Greene, project manager, said.

"Officials of the City of Brea have helped us tremendously with their insistence on quality development," H.T. Greene, president of H.T. Greene & Associates, commented. "The surrounding area will comprise first-rate projects that will enhance the character of the entire region."

Within a mile of Brea Park Centre Suzuki is planning its west coast regional headquarters, Beckman Instruments is building its Diagnostic Division headquarters, Union Oil Co. is constructing a \$20-million addition to its research center, and Brea Data Sun has just opened a new dealership.

Across the nearby Orange Freeway, the Brea Civic and Cultural Center is under construction, and a Center are under way at Brea Meadows. The area's prime shopping center is being developed by Homart Development Corp. The center features the major department stores—Sears, Nordstroms, and the addition of Broadway—and the additional project more than 1.2 million sq. feet of retail space.

The Brea Financial Center is close to Brea Park Centre.

LATEST PROJECT—Brea Park Center, \$10-million, 172,000,000-square-foot office complex, is newest project in city's program.

NOV. 1, 1978

FMC of Brea enters its second half century

FMC's Fluid Control Operations in Brea is launching its second half century on the local scene . . . having moved here from Fullerton in 1928 to the present headquarters site at 265 S. Puente St.

Originally known as the Chiksan Co., FMC Brea has gravitated from the role of a small engineering-oriented company whose product lines lead to significant advances in oil field exploration.

They are now involved in many different products which have been marketed by sales offices internationally, as well as being manufactured abroad under manufacturing licenses they have issued in Japan, France, England and

Mexico.

Actually, "Chiksan" started out in 1906 as a small gold mining company in Korea (having the meaning of "Mountain of Gold") and the founding engineers re-

established their firm in the United States after World War I to serve oil field activities in Long Beach, Huntington Beach and Santa Fe Springs.

The firm now utilizes a total of 149,000 square feet of covered space on a 17-acre complex.

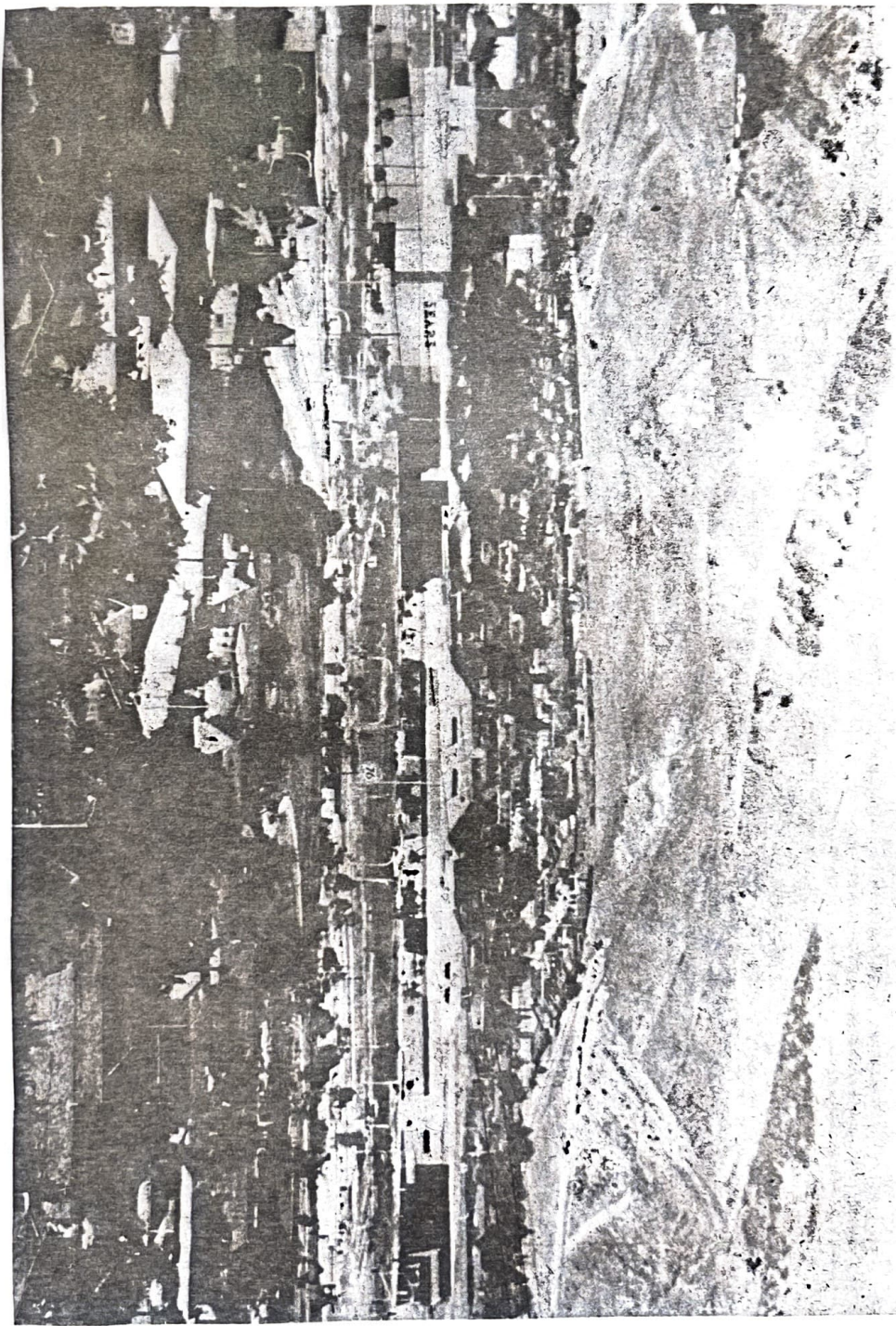
They have expansion plans for the production department, with construction completion projected sometime in 1979. This would bring to almost double the original area in Brea, which totaled 90,000 square feet at

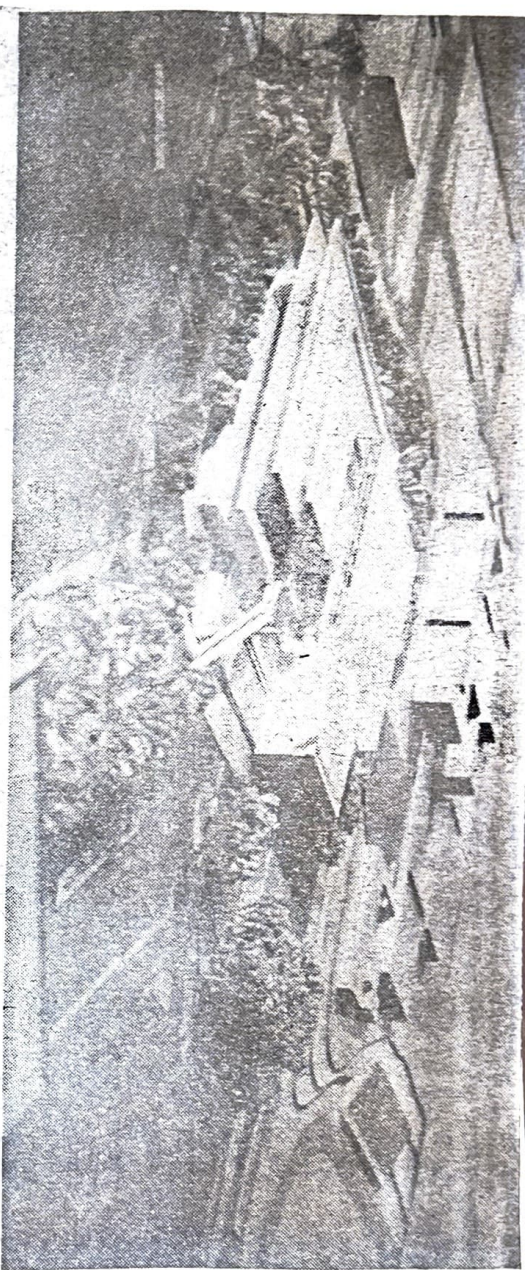
the outset.

Brea production lines feature the swivel joint, a pressure seal between two rotating pieces of pipe used as drill string in oil well operations as well as having sophisticated applications in the steel processing industry, and in plastic injection molding machines.

They also have a ball joint with flexibility comparable with rubber or metallic hose which is used in oil field operations as well as by other industries.

Approximately 400 employees serve at the Brea plant, where their paychecks add up to a contribution of close to \$6 million a year for the area's economy.





PLANS FOR CIVIC-CULTURAL CENTER UNVEILED
\$10 Million Facility in Brea Is Planned Near Brea Mall

Plans For Civic-Cultural Center To Be Built in Brea Unveiled

BREA — Plans for the \$10 million civic-cultural center on four acres northwest of the Brea Mall regional shopping center are scheduled to be completed by the end of this year, City Manager Wayne Wedin said.

The architect, Warncke Dworsky, is half through schematic drawings, and work with the financial consultant is on schedule, Wedin said.

After they are completed it will take at least a year to finish the structure.

Wedin was questioned about the time schedule after the architect distributed several pages of information and a photograph of the structure.

The project will be physically connected to the mall by a totally enclosed pedestrian connector. It will provide office space for city

branch of the Orange County Library, now located at 642 S. Brea Blvd., little theater, cable television studio, art gallery, museum and community meeting rooms. The structure is antedated to include 120,000 square feet of floor area and 120,000 square feet of parking garage.

Warncke/Dworsky said "it represents a bringing together and

focusing of life of the city in one place."

Combining of civic and cultural facilities should allow, the firm said, for implementation of training and exhibit programs not possible in isolated facilities.

The plan will provide adequate space to meet needs in the years 1980 or 2000 and the needs of a city of 80,000 people. Under the plan the high

school library will remain at the high school, since public and private book stacks can't be combined under current law.

The cultural portion of the facility is planned to contain space for city council-school board meetings and public hearings. It would not be combined with a little theater or conference training center.

AP/Wide World

Unfiled

JULY 1, 1976

Jeweler Has Eye For July 4

By DAVE TAYLOR
News Tribune Writer

BREA — Everybody seems to be joining into the Bicentennial spirit — the closer the 200th Anniversary of the Declaration comes into view. It is Sunday, July 4.

Nobody in Brea may have a closer tie to independence, aside from Mrs. La'Vita Daetweiler, a descendant of

the Adams family and Revolutionary War heroine Molly Pitcher, than Jack Semless, local jeweler, who comes from Philadelphia, where the American eagle was hatched.

The Semless store at 118 S. Brea Blvd., has a window-full of Bicentennial oriented items including a Civil War discharge, "fire marks" dating

to Benjamin Franklin's time, ancient lead soldiers and glasses which could have been worn by Franklin himself.

Also are some of Semless's wife's collection of 50,000 post cards, which celebrate Independence Day, with appropriate pictures and messages, just like for Christmas, Easter, Thanksgiving or other occasions.

"We had a combination antique and jewelry store in Philadelphia, which was condemned in 1982," said Semless the other day. This was done, he added to make room for Independence Hall Mall.

The "fire marks" were allowed to be taken from the building, each of which was either protected by a fire association paid for by the landlord and/or occupant, or he had to provide his own protection.

Along the Boulevard

By DAVE TAYLOR



Property prices have gone up four times since Don McBride started selling real estate in Brea, back in 1956, he told fellow Rotarians recently.

His first subdivision was the one behind the Brea-Olinda High School. At that time three bedroom homes sold for \$10,000 with \$295 down. A four-bedroom home sold for \$11,000. And a larger four-bedroom home with family room was priced at \$11,850.

Now the houses are worth \$40,000, he remarked. They're only a couple of blocks away from Brea Mall regional shopping center.

(At one time the homes were in the path of the east-west freeway, which has since, for all practical purposes, been abandoned.)

McBride said it "is a real luxury" for young couples to afford a house today.

The most inexpensive home in Brea is \$35,000. He suggested those who are interested in large scale projects such as apartments should do it as a group investment with professionals who know management techniques.



News Tribune Photo

ANTIQUe GLASSES USED BY BREAN JACK SEMLESS TO PEER AT CIVIL WAR DISCHARGE Paper And Spectacles Plus Fire Marks' Are Part of

Brea Bicentennial Salute to Cap Fireworks Salute to Cap

A-12 Thursday, July 1, 1976

The POST

BREA — In salute to America's Bicentennial a "God Bless America" 200-shell aerial salute will complete the Independence Day fireworks show at Brea-Olinda High School Stadium.

It is sponsored by the Brea Firemen's Association.

Gates open at 7 p.m., the preshow starts at 7:30 p.m., the fireworks show at 9 p.m. and finale at 10:10 p.m.

Special guests will be the mayor of Lagos de Moreno, Jorge Santroman

and his entourage, Lagos de Moreno, in Jalisco, Mexico, is Brea's Sister City.

Among the 10 set pieces (frames) to be presented is a pyrotechnic recreation of the Neil Armstrong moon walk, including a recording of the first moon landing, obtained from the Lyndon B. Johnson Space Center in Houston, Tex.

In order, the set pieces are: American Flag, Mayflower the Pilgrim ship, Paul Revere's ride, the Liberty Bell, President

Washington and Lincoln, "Shot Heard 'Round the World", Covered Wagon, Statue of Liberty, Battle of Iwo Jima and the Moon Walk.

Preshow festivities include the all-church chorale composed of members from the Brea Baptist Church, Brea Congregational Church and United Methodist Church, the Paul Zen Quartet with Frances Alva; clowns; "Uncle Sam" (Jeff Winters), speech contest award presentations and door prizes.

Bang Up Bicentennial Planned For Brea Residents

Touching off the Bicentennial activities in Brea as a raffle held by its Senior Citizens for a beautiful handmade bicentennial quilt. Made by the Seniors, the quilt was won by Terry Phillipa, grand-daughter of a Senior citizen.

RAZEBO
A week-end-long celebration will take place Saturday and Sunday, July 1 and 4, starting with Dedication of the new "Gazabo" in City Hall Park. This gazebo, a lovely addition to the park, will be a gift from the Soporistic Club, who worked very hard on various fundraising projects so that the gazebo might be built.

PICNIC
Immediately following the Gazabo Dedication, the Family Bicentennial picnic will start. This old-fashioned picnic is for EVERYONE in the entire community and will run from 12:00 noon to 6:00 p.m. It is sponsored by the city of Brea with co-operation from all the local churches, PTAs and civic groups. The entire afternoon will be filled with entertainment and games, contests for adults as well as children.

Among the activities will be a corn-shucking contest, corn donated by Alpha 364, salt and butter by (a few), a watermelon eating contest (melons donated by Albertson's) and a greased pig chase pig from local FFA student, local FFA student, winner gets to keep the pig. Many prize trophies have been donated by "emless" Jewelers and are on sale.



WILL THIS PIG RUN.....June and Danny Prewitt try to decide if this little piggy will run fast for the greased pig race during Brea's festivities for the Fourth.

engraved for the lucky winners.
Pack a picnic lunch and come down to Arovista Park for all the fun. As you can see by the schedule, there's something for everyone!

DANCE

After spending the afternoon at Arovista Park, enjoying all the Bicentennial Picnic activities, drop the kids off at home, and get yourself ready for the street dance which starts at 9:00 p.m. in St. Angela's Catholic Church parking lot. There will be good music to dance to and lots of food and beverages on sale.

BELLS
If you planned to sleep very late on Sunday, July 4, forget it! There's Church services, remember? Then at 12:00 noon you will hear Freedom Sounds when all the church bells will ring in commemoration of America's 200 year celebration.

A brass casted replica of the Liberty Bell has been purchased by the Brea Bicentennial Committee and will be presented to the city soon.

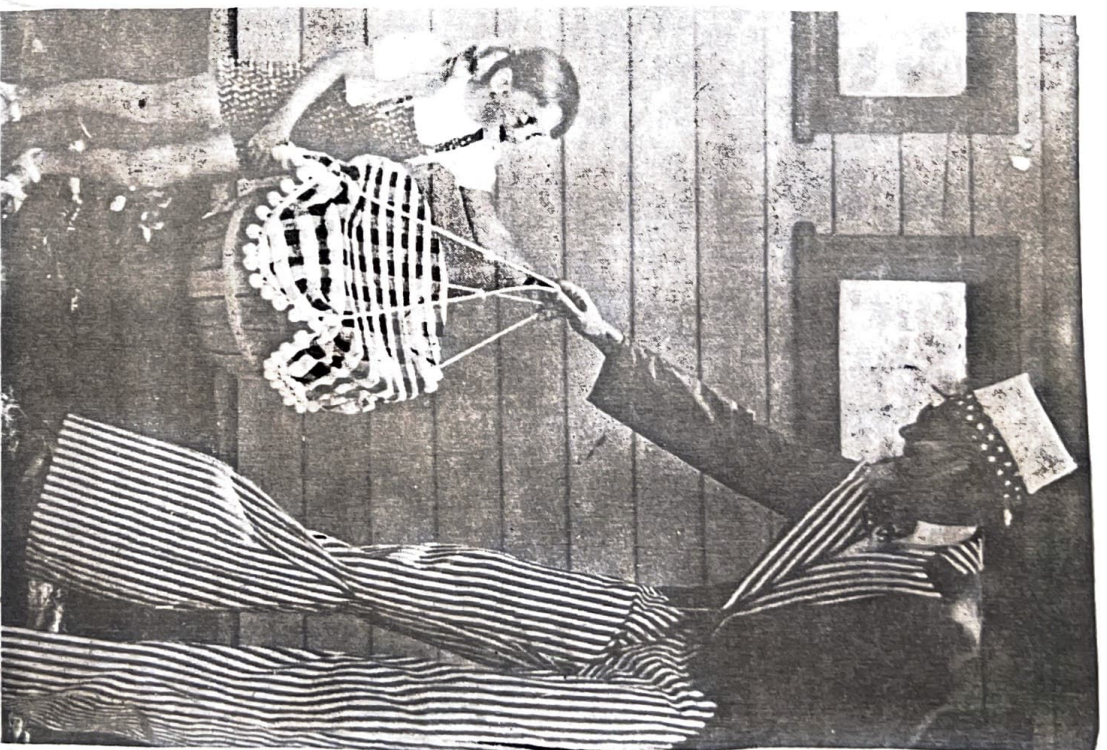
FIREWORKS

You better catch a quick nap in the afternoon, so you're ready for the Outstanding Fireworks Program at Brea Olinde High School Stadium Sunday evening, July 4. Gates open at 7:00 p.m. with the Preshow Festivities starting at 7:30. There will be clowns, and a musical presentation by the All-Church Chorus.

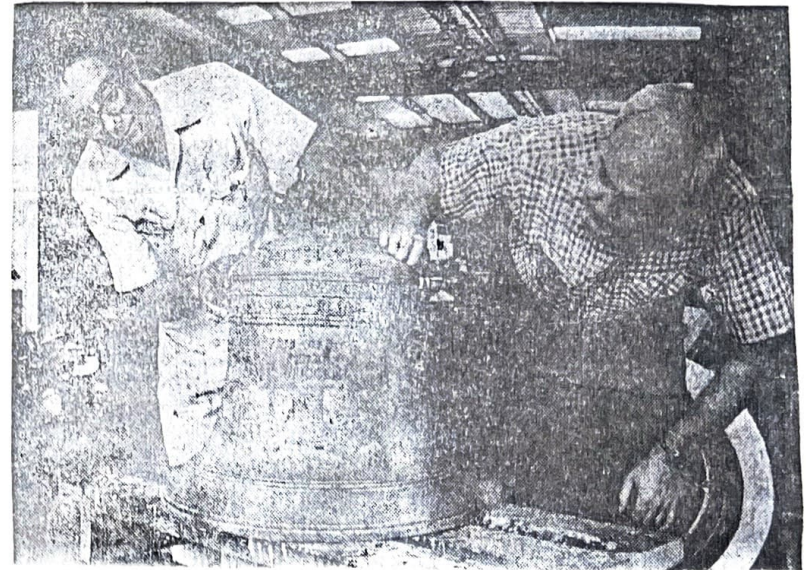
Entertainment also includes a group from Col State Fullerton, The Paul Zen Quartet and Francis Alva. Shortly before 9:00, Savings Bonds for \$25 each will be given out. The first 3 Bonds will go to the Bicentennial Speech Contest winners and will be given by the Brea Firemen's Association and winners will be chosen from numbers on entry tickets.

By 9:00 LOOK OUT! The fireworks you'll see will dazzle your eyes and your heart. Captain Richard Francesconi and his crew from the Brea Fire Department have quite a show in store. It will include ten set pieces (American Flag, Mayflower Ship, Paul Revere, Liberty Bell, Washington and Lincoln Busts, Covered Wagon, Statue of Liberty, Hiroshima, Moon Landing, Crossing Comets Finale). In-between each of the sets, 15 - 20 aerial shells will be fired.

At intermission, three more bonds will be given away by the Fireman's Association -- two \$50 bonds and one \$100 bond. The finale set will consist of a 200 shell salute to America. Tickets are \$1.50 per person and are on sale now at City Hall, Chamber of Commerce, Fire Station #1 (Berry St.), Fire Station #4 (Olinde Village), 7-11 store on Lambert Rd.



OFF TO THE FOURTH OF JULY PICNIC.....Uncle Sam (Jack Winter) is ready to help Rachel Morgan with her basket as Brea residents get ready for their really big Fourth of July Bicentennial Picnic.



FOR WHOM THE BELL TOLLS — Students at Brea-Olinda High School will present this half-size replica of the Liberty Bell to the city of Brea during an Independence Day fireworks show at the school's stadium. Frank Schweitzer, co-chairman of the Brea bicentennial commission, displays the wooden mold for the bell at top left. At top right, Schweitzer and Aubrey Shafer Jr., owner of McGraw and Son Founders, Brea, prepare for the casting of the bell. The completed product is examined at right by Shafer and Andy Saavedra, the shop superintendent.

JULY 3, 1975



SNEAK PREVIEW — Fire Chief Ken Staggs, left, Councilman Carol Weddle and Captain Dick Francesconi take an early look at some of the shells that will be fired in Friday night's fireworks show at Brea-

Oinda High School. The show will be a salute to Mexico and America. Tickets are \$1.25 each and are available at local businesses and the Fire Station.

(Star-Progress Photo)

MAYOR'S MESSAGE

Breans A Proud People

By
MAYOR LEONARD H.
MACKAIN
City of Brea

As we enter our Country's Bicentennial Year, we in the City of Brea are proud to have been one of the first cities to be sanctioned a Bicentennial Community. Breans are traditionally a proud people, proud of their city, proud of their State and proud of their Country.

In keeping with this pride we have designated the coming year as "Brea's Bicentennial Festival". A variety of community oriented events are being planned under the co-chairpersonship of former Mayor Frank Schweitzer and Recreation and Parks Commissioner LaVeta Daetweiler. These events will emphasize community and family life in Brea, the history of Brea and the progress toward our community goal of keeping Brea a well balanced and economically stable city in which to live, work and raise a family.

We Americans are constantly being bombarded with criticism from home and abroad on every conceivable issue. While, I am sure, we would all agree America has its share of problems there is a song that goes, "we must be doing something right to last two hundred years". I know of no other



Mayor MacKain

active government today that has survived that long.

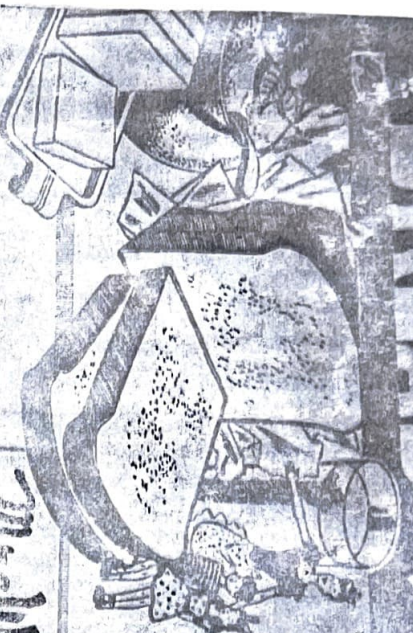
Our Country is going to have a birthday — a two hundredth birthday and we have a need to celebrate.

American Revolution Bicentennial administrator John V. Warner, has stated "The success of the celebration recognizing this most significant period in our history will be more dependent on the numbers of participants than on the numbers of spectators".

It is my hope that all Brea residents will become participants in the coming events scheduled in our City during the Bicentennial Year.

BREAD

a basic food... goes with everything
Buy an extra loaf today at 5¢



No meal is complete without bread... the perfect partner for other foods...
APRIL 11, 1945

CHECK THESE SATEWAY VALUES

- Black-eyed Beans 1-lb. can, 15¢
- Sweetened Milk 1-lb. can, 21¢
- Chili Pickles 2-lb. jar, 32¢
- Cucumber Pickles 1-lb. jar, 37¢
- California Rice Golden Feed 1-lb. can, 14¢
- California Prunes 40-50 size 2-lb. pkgs., 45¢
- Sno-White Salt 25-oz. pkg., 6¢
- Morton Salt Plain or Iodized 25-oz. pkg., 7¢
- Large Walnuts Diamond brand 1-lb. can, 45¢
- Egg Noodles Cold Medal brand 1-lb. pkg., 29¢
- Liquid Starch Vanco brand 21¢
- Oleomargarine Sunnybank brand 1-lb., 45¢
- Moth-Ded with DDT 16-oz. bottle, 39¢
- Healthway Dog Food 5-lb. bag, 32¢

CAROL DRAKE'S SPECIAL MOTHER'S DAY TABLETS ARE READY—Just drop us a post-card and we will send you our free gifts—FAMILY SPECIAL FOR MOTHER'S DAY, MAYTIME TEA FOR MOTHERS, and MOTHER-DAUGHTER LUNCHEON. The address is Carol Drake, The Homemaker, Bureau, Box 2110, Dept. MD, San Francisco 26, California.

PRODUCE

Many of your favorite Spring fruits and vegetables are now on display at Safeway. Stop today and choose from our wide assortment.

GREEN PEAS

Pods are dark. Full of sweet, tender peas. Serve hot!

1 lb. **12¢**

NEW POTATOES

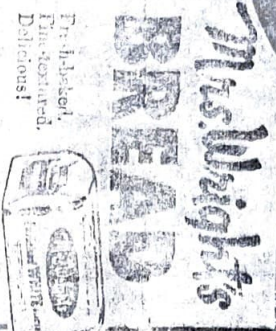
Small size. Perfect for cream and wild peas. White Rose variety.

1 lb. **8¢**

PIPER APPLES

Excellent for cooking. Bake apple pie often.

1 lb. **9¢**



Mrs. Wright's BREAD
 Delicious!
 Enriched white or whole wheat
 Enriched white or wheat sliced
 Sliced sandwich loaf
 White or wheat

1-lb. loaf **11¢**
 2-lb. loaf **16¢**
 2-lb. loaf **16¢**



Safeway buys only top grades of beef, pork, lamb and veal. You get grand-tasting meats every time you buy!

TENDER MEATS

LEG OF LAMB 1 lb. **59¢**
 Short cut and fully trimmed. Top grades of lamb.

BEEF SHORT RIBS 1 lb. **10¢**
 Top U.S. Government graded beef. Tender and delicious!

SMOKED PICNICS 1 lb. **49¢**
 Enjoy the grand flavor often.

HEN TURKEYS 1 lb. **59¢**
 Enriched. Oven-ready.

Meat prices subject to change after Wednesday of this week.

CANNED FRUITS, VEGETABLES

- Peeled Apricots Delma Pak brand 30-oz. can, 30¢
- Prepared Prunes 50-oz. can, 19¢
- Cul Green Beans Halfway brand 15-oz. can, 17¢
- Sugar Peas Pillsbury 20-oz. can, 19¢

BEVERAGES

- Nascote 5-oz. can, 37¢
- Cocoma 1-lb. jar, 41¢
- Hershey Cocoa 1-lb. can, 14¢

JULY 3, 1975

MAYOR'S MESSAGE

Brea's A Proud People

By
MAYOR LEONARD H. MACKAIN
City of Brea

As we enter our Country's Bicentennial Year, we in the City of Brea are proud to have been one of the first cities to be sanctioned a Bicentennial Community. Brea's are traditionally a proud people, proud of their city, proud of their State and proud of their Country.

In keeping with this pride we have designated the coming year as "Brea's Bicentennial Festival". A variety of community oriented events are being planned under the co-chairpersonship of former Mayor Frank Schweitzer and Recreation and Parks Commissioner LaVeta Daetweiler. These events will emphasize community and family life in Brea, the history of Brea and the progress toward our community goal of keeping Brea a well balanced and economically stable city in which to live, work and raise a family.

The Americans are constantly being bombarded with criticism from home and abroad on every conceivable issue. While, I am sure, we would all agree America has its share of problems there is a song that goes, "we must be doing something right" to last two hundred years". I know of no other

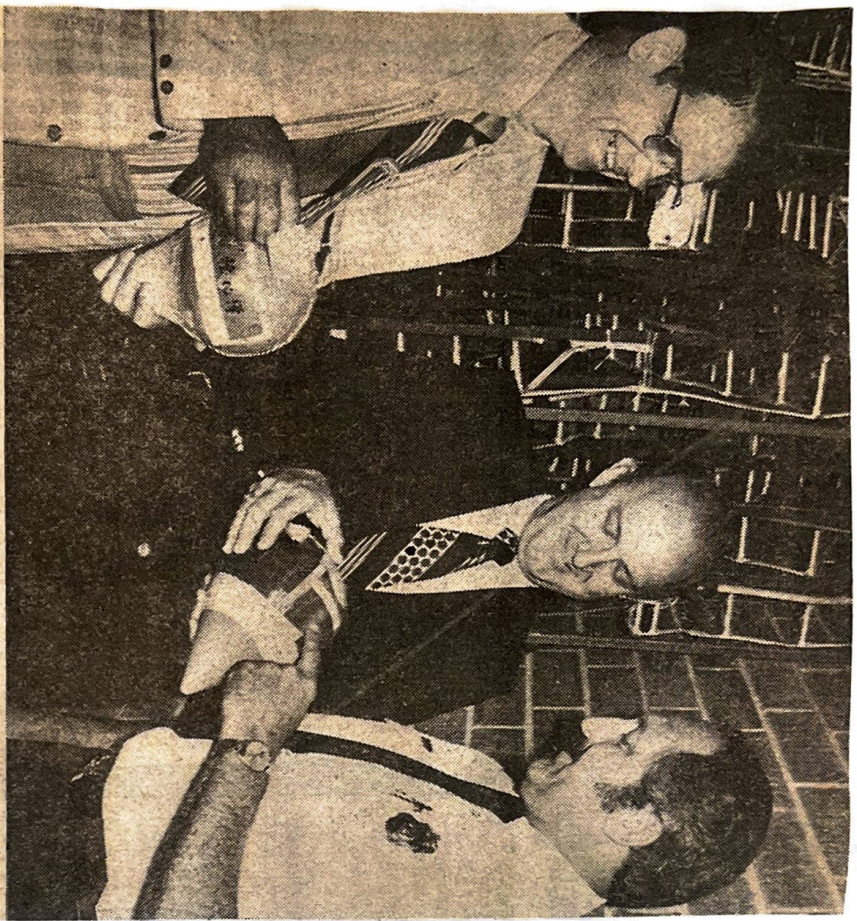


Mayor Mackain

active government today that has survived that long. Our Country is going to have a birthday — a two hundredth birthday and we have a need to celebrate.

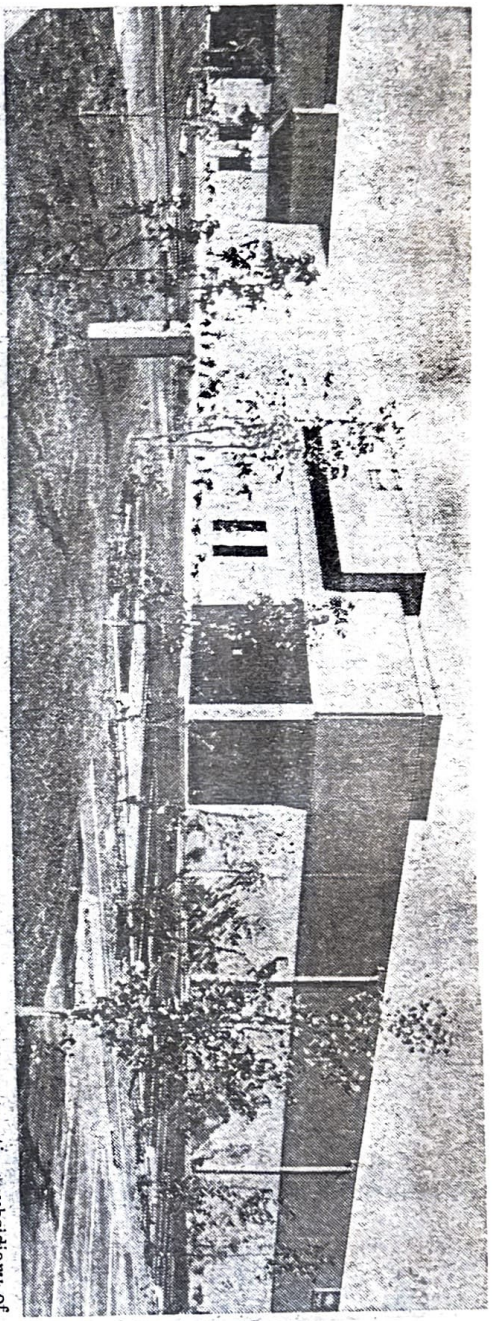
American Revolution administrator John V. Warner, has stated "The success of the celebration recognizing this most significant period in our history will be more dependent on the numbers of participants than on the numbers of spectators".

It is my hope that all Brea residents will become participants in the coming events scheduled in our City during the Bicentennial Year.



SNEAK PREVIEW — Fire Chief Ken Slaggs, left, Councilman Carol Weddle and Captain Dick Francesconi take an early look at some of the shells that will be fired in Friday night's fireworks show at Brea-

Olinda High School. The show will be a salute to Mexico and America. Tickets are \$1.25 each and are available at local businesses and the Fire Station. (Star-Progress Photo)



BREA INDUSTRIAL COMPLEX warehouse is first building sold in \$6 million, 11-unit project. Mape Industries is developer for the complex, which is Brea's first major industrial park. Johnson &

Mape Construction Company, general contracting subsidiary of the development firm, is the builder.

First Warehouse In Brea Industrial Complex Is Sold

Stanley of Coldwell Banker
Commercial Brokerage Com-
pany, Santa Ana.

Mape Industries today announced the sale of a 36,000 square foot warehouse at 340 North Cliffwood Park Street in its \$6 million Brea Industrial Complex. The property is the first of three buildings already completed in the 11-unit project and was purchased by investor Ryvers C Reeder of Fullerton. The \$435,000 transaction was handled by John P. McDonald and Jim Elsmar of the J.W. Lewis Company of Los Angeles.

The architecturally controlled single story building is part of a master-planned 35-acre development that includes such features as rail service access, truck loading facilities and fire sprinkler protection. The complex itself is Brea's drive of the city. "Other buildings in the complex are available for sale or lease, and sites are available for build to suit." Located off Lambert Road and Oak Place, approximately one-quarter mile from the Orange Freeway, the complex will be built over the next two years by Johnson & Mape Construction Company, general contracting subsidiary of the development firm. The site was originally purchased in 1973 from Monterey Park Land Company in a transaction negotiated by James

NEWS OF BREA

on this page

Story and Photos By DAVE TAYLOR News Tribune Writer

Craig Regional Park to Open Soon

BREA — Dedication ceremonies are scheduled Aug. 1 at 11 a.m. for the first 60-acre phase of the Craig Regional Park, on State College Boulevard south of Imperial Highway.

It is the first regional park in the Third Supervisorial District of Ralph Dietsch, but not the last. As many as four such parks will be constructed in the district at the same time in the near future, timing indicates. They are Craig, Carbon Canyon, Yorba and Los Coyotes.

Eventually the park will cover about 130 acres. It is named for Edward "Ted" Craig, former mayor of Brea who was the youngest speaker of the State Assembly. He is now a legislative advocate for Orange County and the City of Brea. The park is across State College Boulevard from his residence, the "Craig Ranch," nestled amongst a grove of oranges, one of the last in Brea.

Admission to bicyclists and walkers will be free but there is a nominal charge for motor vehicles, including motorcycles. There will be another entrance, on Associated Road.

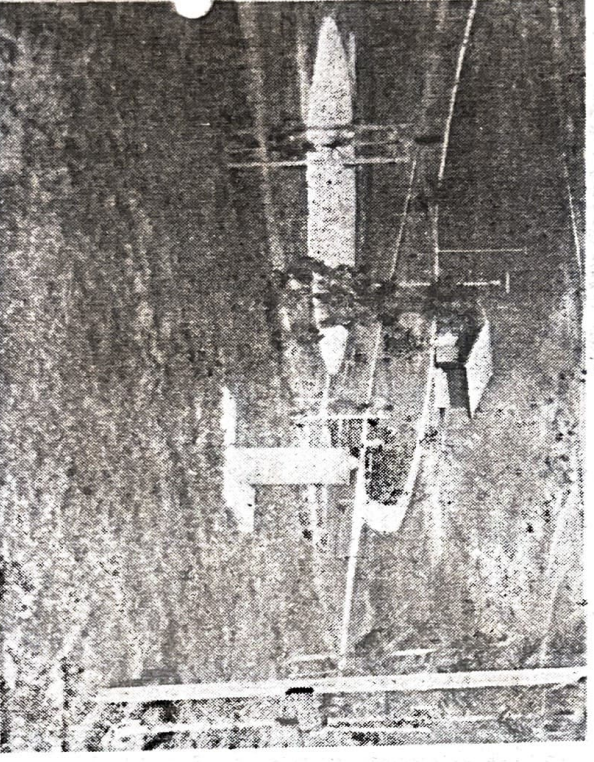
First phase of the park includes a natural amphitheater which is lighted, together with plenty of drinking fountains and restroom facilities.

There are wide sidewalks which can be used for bicycling as well as walking and view sites. You won't see any asphalt jungle of parking lots since there are two major ones interspersed with smaller ones. Already birds, frogs and squirrels have found the wildlife sanctuary and more are expected to scurry across Imperial Highway when the new Homart Regional Shopping Center begins construction, on the north side of Imperial.

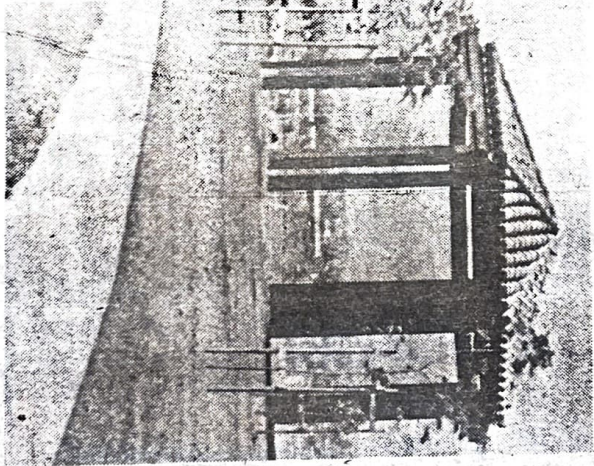
Ray Rhoads, Dietsch's administrative assistant, said modestly, the park's location across from the regional shopping center was "a happy accident."

One of the most enjoyable features is the scattering of boulders as natural seating which also breaks up the park, a rolling area, northwest of Fullerton Dam. It is geared to people bringing in their own recreation equipment. The southern phase, near the dam flood control plant, is planned for high activity with ball diamonds. Water enters the park from two directions, under State College on the west side and under Imperial Highway from the north.

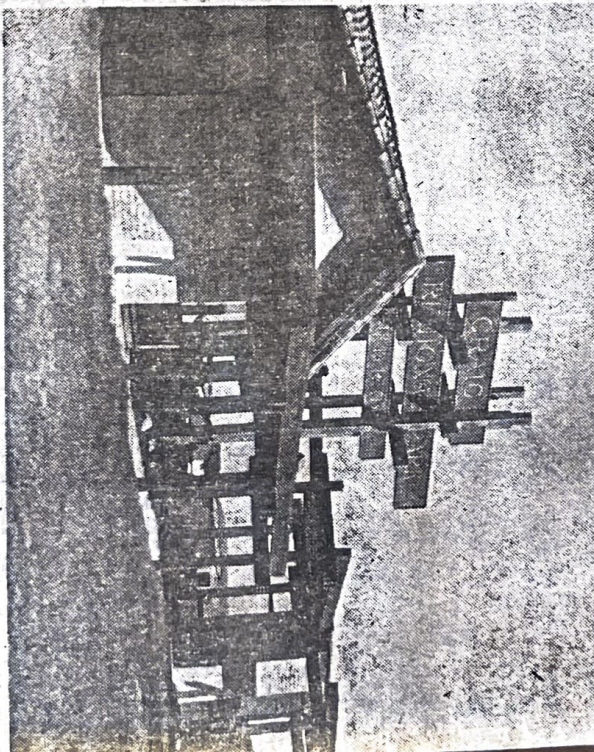
The park is being built with federal assistance and was fortunately just barely negotiated with an oil company for removal of the wells, and pumps at a cost of \$250,000 just as the oil shortage hit. Once the trees are full-grown it can be seen it will be a pleasant retreat from urban development.



AMPHITHEATER — Part of the a natural amphitheater with construction phase of Craig Regional Park is in crete stage.



VIEW SITE — One of the unusual attractions of Craig Regional Park, is a shaded, pagoda-like view point in the northeast area. It can be approached via walking and bicycling paths.



ADMINISTRATION AREA — Entrance will be officially opened Aug. 1, at 11 a.m. to the way to Craig Regional Park, will

7/16/74

Mape Industry Official Tells Brea Industry Story



ON THE MAP—Mayor Leonard Mackain, Debble Priest, Miss Welcome to Brea and Chamber President George Thornton take a look at a map showing the location of Pacific Intrapak, Brea's future frozen food

processing, warehousing and distribution center. Work on first phase of the project, located on Imperial Highway and Kraemer Boulevard is already underway. (Star-Progress Photo)

BREA — The Mape Industry story as it relates to the City of Brea was presented at this week's Rotary luncheon by Richard L. Peterson, development manager, southern division, Mape Industries, and his sidekick Roger Gregg.

The picture painted by Peterson of Mape and Brea was a rosy one. Rotarians were treated to some fantastic figures, including the opening of ground for a new \$20 million-plus frozen food facility plus work being done on Mape's Brea Industrial Complex.

Mape presently has projects underway in Brea, Buena Park, Anaheim, Cerritos and Garden Grove, according to Peterson. "But the greatest growth in Orange County is in Brea," he said.

"Brea," he said, "is near the population center of the county and there are eight freeways within 15 minutes drive of the city."

"Brea also has a progressive citizenry and city government."

Peterson said that Mape's Brea Industrial Complex between Lambert Road and the Southern Pacific railroad, was begun with the breaking of

ground last March. He noted that the first phase of the some 100-acre tract will include 150,000 square feet of office and light manufacturing space, with a potential of 700,000 square feet of usable space.

Value of the project, he added, will be between \$8 and \$9 million. When completed, the industrial park will have a work force of between 500 and 1500 persons with an annual payroll of \$15 million.

When completed the building will house two million square feet with 800,000 square feet devoted to warehousing and the remaining 1.2 million square feet to the frozen food processing.

Pacific Intrapak's decision to locate the world's largest frozen food processing and storage plant was not a fly-by-night venture, according to Peterson. "We studied the project for about three and a half years, producing thoughts and developing plans in that time. And we came up with a total concept for a frozen food processor."

The plant will be built in three phases, he said. Peterson forecasts up to 4,500 will be employed at the new facility with an estimated annual payroll of \$45 million, based on today's payroll standards. Value of the property when completed will be about \$40 to \$100 million, he said.

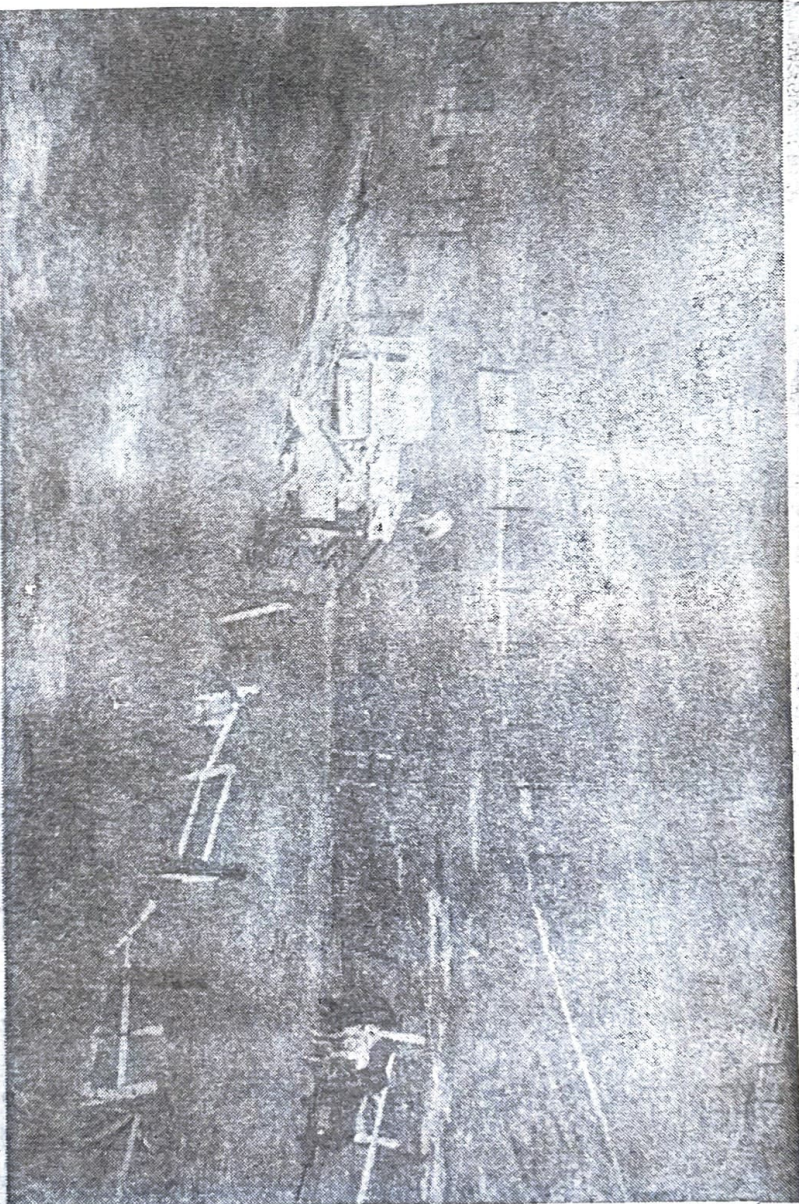
"Brea, he said, 'is near the population center of the county and there are eight freeways within 15 minutes drive of the city.'"

Peterson praised the city government of Brea and its fine cooperation with Mape during the trying times when Mape was searching out and developing location plans for its two Brea projects. He said Brea has one of the finest city governments with which his company has become involved.

Peterson said that Mape's Brea Industrial Complex between Lambert Road and the Southern Pacific railroad, was begun with the breaking of

Next week's Rotary program will be an address on "Boys" by Tom Sander, director of the Boys' Club of La Habra.

It's Home Now, But ...



A THING OF THE PAST? — An old dirt road winds down into the gully past the horse corrals in what appears to be a pastoral scene of the old west. Actually, old tobbin reaching through the fence for that select bit of grass is unaware that the spot where he is standing, between Ran-

dolph and Poplar Streets near Imperial Highway, may be the exact location of the Brea Town Center some five years from now, and he and his pasture cohorts may be evicted.

(Daily Star-Progress Photo)

\$6-Million Development Under Way in Brea

Work has started on a \$6-million Brea Industrial Complex at Lambert Road and Oak Place in Brea. Mape Industries of Newport Beach is the developer and Johnson and Mape

stated for completion in the spring. Mayor Donald Fox of Brea said the industrial park will generate 1,000 jobs when fully developed.

Sites are available for sale and structures will be built to suit or buildings may be leased, according to the developer.

INDUSTRIAL PARKS

Construction Co. is the general contractor.

The project is on 35 acres and is served by the Southern Pacific Railroad. It will be developed over the next three years with the first three buildings

Covington Brothers and Moran Properties Inc.

One building will have 175,000 square feet of floor space and the other will have 63,000. There will be off-street parking and dock-height loading for 28 trucks. The larger building will be served by the Santa Fe Railway.

The project will be financed by Union Bank and Occidental Life Insurance Co. and sales and leasing agent will be Coldwell Banker.



Construction is nearing completion on a 25,000-

square-foot building at Rancho California Industrial Park for Clay Industries Inc., cosmetic manufacturers, which will move from Santa Monica and consolidate its research development, laboratory manufacturing, sales and distribution operations under one roof.

The building is of concrete and is located on Front St. in the park. It will cost an estimated \$350,000. General contractor is Morgan Lupper and Co., Los Angeles. Rancho California is on Interstate 15 midway between Riverside and San Diego.



PACIFIC OIL WORLD MOVES TO BREA

Pacific Oil World, the nation's second oldest oil magazine established as California Oil World in 1908, has moved its administrative headquarters from Los Angeles to the historic oil town of Brea which is located 26 miles Southeast of Los Angeles in Orange County. The

publication was started in Bakersfield in newspaper form and relocated in Los Angeles in 1917. It had occupied offices in the Park View Building on 7th Street across from MacArthur Park for the last 28 years. Over the period of years POW has absorbed into its operation all other California based oil magazines which included Western Oil & Refining, Petroleum World, Oil, the Oilman's Newspaper, Petroleum Industries, etc. The name "Brea" is derived from the Spanish language meaning "asphalt" or "tar" and the town was renamed this in 1911 because of the oil seepage in Brea Canyon. It had previously been designated "Randolph" as a Pacific Railroad station stop. The Brea-Olinda fields were major factors in the California oil boom of the early 1900s with such operators as Brea Canyon Oil Co., Columbia Oil Productions Co., E. L. Doheny, Chanslor-Western Oil Co., Shell Oil Co., Birch Oil Co. and Union Oil Co. Union Oil remained a prime developer and its people and property have been important in the growth of the town. At this time in Brea and adjacent areas of La Habra, Yorba Olinda, and Placentia all phases of oil activity continue and there are major facilities for Union Oil Research Center, Standard Oil Co. Western Operations, Chevron Research Labora-

tories, Collier Carbon & Chemical Co. along with such leading petroleum equipment manufacturers as Shafco Industries, Inc. (originally Shaffer Tool Works), started in 1923 by W. D. Shaffer, Tretolite Div. Petrolite Corp., FMC Petroleum Equipment Div. (came to



Jack M. Rider



M. Kinzie Miller

in 1928 as Chiksan), Depthograph, Rockman Instruments, Ameron, and Rucker. Baash-Ross Tool Co. was also started in Brea before its move to Huntington Park and subsequent sale to Joy Mfg. Co. Many other small tool and service companies that were sold or split up had their beginnings in Brea. Principals in the publication are M. Kinzie Miller, magazine publisher and president of the corporation Petroleum Publishers, Inc. and Jack Rider, advertising director and corporation vice president. Miller is widely known in the California oil industry besides being associated with POW since 1936 in such capacities as editor and publisher, his career includes being an independent oil operator, an investment counselor specializing in oil & gas, and a sales manager for a petroleum metering manufacturer. He has also been active in industry associations and general business and philanthropic groups. Rider has been with oil publications since 1954, affiliating with POW in 1962. His entire business life has been in the press communications field starting as a teenage ad salesman and sports writer for his hometown newspaper, the Delano Record. He is a graduate of Bakersfield College and USC. His service in such organizations as the API, SPE, R. M. Pyles Boys Camp, BPAA, NOMADS, Mr. & Mrs. has earned several awards of merit.

POW enjoys an experienced and dedicated business staff with H. H. "Bob" Roberts as Editor. His enlightening articles on government, politics and overseas come from a career with Standard Oil Co. where he retired as So. California director of public relations. Bob recently received a certificate of merit from Los Angeles Public Relations Society with whom he has served as past president and is one of the founders. No other magazine can boast a group of editorial specialists of expertise such as POW has in Dick Sneddon, Bill Rintoul and Averill Munger. Sneddon, a popular personality in the oil industry through his work for Union Oil Co., Los Angeles Petroleum Club, PPP'ers, 19'ers, etc., has a unique style of writing as seen in his regular "The Grapevine" column in POW. His many world-wide oil friends over the years and his keen memory of the industry development make him an invaluable source of written and verbal oil industry lore. Bill Rintoul, with whom Jack Rider worked at the News of Delano and Bakersfield California, is recognized as the finest free lance photo-journalist in the industry having had his articles published in all leading oil and energy related magazines, newspapers, house organs, etc. Bill, operating out of Bakersfield is drilling, production & offshore specialist and also covers Alaskan events

for POW while maintaining a syndicated oil column in a chain of newspapers and is oil editor for the Bakersfield Californian. Av Munger, president of Munger Oil Information Service Inc., publisher of daily California oil scout reports and most modern graphic oil map books, has traveled throughout the international oil scene besides being the authority in the Far West on leasing and drilling activities. His company goes back a generation of Mungers when the scout reports were obtained by bicycling from one rig to another to collect data in the days of "tight hole" policy. POW has had 5 ownership groups over the years and Alice Leithead has been with the magazine to serve 4 of them over a span of 48 years. Her business life after graduating from Woodbury College has been spent with POW and her telephone voice is known throughout the oil patch to anyone having any business with POW. She is production manager and general office manager and is a friend of many people who seem to call POW with all sorts of questions about the oil industry and where to locate companies, lease forms, etc. Retiring after a 28 year span as circulation director is Margaret K. McNaughton, affectionately known as Maggie in POW's ranks and to the many business friends of POW. Maggie was in the publicity department of Warner Bros. prior to joining POW and this interesting job brought her into contact with many of Hollywood celebrities of the movies' most glamorous era. She also was with Hearst Newsreel. Maggie still helps from time to time at POW on a consultant basis. New circulation director and production assistant is Rachelle Peyser who has a wealth of experience from such publishing companies as Conde-Nast, Lane & Wiley and who is a welcome pleasant addition to the staff. John Dobry, veteran newspaper production expert, is the editorial production specialist for POW. The clerical staff now includes Rider's wife, Schaloiaas, and daughter, Kelly, who aid in all special projects. The actual printing of the magazine continues at Gibbs-Inman Co., Louisville, KY, with mailing from All Mailing Service, Los Angeles. Engravings and negatives and reproduction work have been handled for over 20 years by Eddie Collins, veteran engraver, of Publication Photo-Engravers, Los Angeles. Our industry friends and readers are invited to visit the new headquarters at 222 So. Brea Blvd., Brea (intersection Imperial Hwy. & Brea Blvd. A half-mile West of the Orange 57 Frwy). Mailing address is P. O. Box 129, Brea, CA 92621; telephones (213) 691-1419 and (714) 990-3033.

(See Dick Sneddon's column in the Grapevine for his personalized article of Brea oil days.)

NEW

POW

Subscription Rates

For only the second time in 20 years, PACIFIC OIL WORLD has been forced to increase its yearly subscription rates in the face of inflating postal, printing, paper, production and labor costs. Effective September 1 the new rates are as follows:

U.S. & Possessions

\$3.00 per year

\$5.00 for two years

\$6.00 for three years

Foreign & Canada

\$4.00 per year

(1st class extra)

Single Copies

\$.50 each

January Annual Review

\$2.00

All circulation correspondence to attention of R. L. Peyser, Circulation Director.

Brea Citizen Accuses City Of Breaking Own Rules

350
By LAURA WINGARD
DSP Staff Writer

BREA — Ralph Sage of Brea is little annoyed that local city and school district officials might have sidestepped some minor rules in moving into the new Civic - Cultural Center.

But Sage, an active citizen in the community, is not about to let the supposed violations go by unnoticed.

Instead, after taking a one-day tour of the cultural center Tuesday with Fire Chief Dick Francesconi, Sage made a formal complaint to the state Occupational Safety and Health Administration.

Specifically, Sage alleges that operating permits are posted

in the center's elevators and that none are on file in City Hall.

Also, he claims no occupancy permits exist for the Brea - Olinda school district office or the law offices of Jim Markman, Brea's city attorney. Both spaces are on the fourth floor of the Civic - Cultural Center.

Sage also says the school district has exposed electrical wires and lacks heating and air conditioning for proper ventilation.

The problem with Sage's charges is officials at OSHA and City Hall claim they just don't hold water.

For instance, Frank Averna, senior safety engineer for OSHA, said the elevators at the cultural center were inspected in Sep-

tember and a permit was issued Dec. 15.

Although the city operated the elevators before Dec. 15 and still don't display the permit, Averna said the law was not violated.

At the initial inspection when "no imminent hazard" is detected, Averna said, an applicant is allowed to use the elevator while the permit fee is being paid and other work completed.

That, he said, is what happened at the Civic - Cultural Center.

Also, after Sage's visit with Francesconi, the chief contacted OSHA to find out if copies of the permit had to be in the elevators.

Francesconi said he was told as long as the original exists, there is no need to display it. Besides, OSHA officials told him the permits usually are ripped down or become riddled with graffiti.

As for the lack of occupancy permits, OSHA does not handle this since it deals only with violations that threaten the safety of workers.

However, the city does issue

opening the business is not.

"We don't want to hold them up," explained Francesconi while the city checks out a company's safety procedures.

Francesconi admitted that Markman's law offices lack an occupancy permit, but he is concerned since the attorney's law books are no threat to the cultural center's structure.

When asked if Markman was breaking any law by not having one, Francesconi said, "No. More than anybody else has. Some cities, he added, don't even issue occupancy permits as much more because it is too time consuming.

The school district office lacks the permit, but the chief said until the office is completed it falls under the jurisdiction of the state division of chitecture. He is not responsible for it.

Sage's complaints about exposed wiring and poor ventilation in the district office will, however, be investigated by OSHA, but officials there probably not responsible for the supposed

charges made to OSHA according to the named Jim Brown, manager at OSHA office where Sage made his charges.

When compared with opening unsafe machines, Brown said Sage's grievances are considered "generally not very severe."

Although Brown could not specifically discuss Sage's charges due to privacy regulations, he did say OSHA usually

(Continued on A-2)

Brea Citizen...

(Continued from A-1)

can't do anything about poor ventilation.

While missing heating and air conditioning services make it uncomfortable to work, unless the poor ventilation is causing toxic fumes in the working area OSHA can't do anything, he said.

But Sage is convinced minor rules have been broken at the Civic - Cultural Center and that city officials would not tolerate such law violations of local businesses were the rule breakers.

"Just because they issue their own permits," said Sage, "they should have to go through the same rigamortale I do."

And while he appreciated the time and effort put forth by Francesconi to explain all the questions he asked, Sage still wants the city and school district to play by the same game plan set for businesses.

"If private industry has to display a permit," he said, "then I understand that they have to have permits, too."

tl
of
ta

FROM
24-79 FILE
ing hazard
liquids have

application for the permit is rather simple, Francesconi said, and asks if flammable liquids such as gasoline or spray paint will be kept on the premises.

If the applicant answers yes to any of these questions, the issuing of the permit is delayed but