

○ History of FMC Brea (Chiksan)

The name Chiksan was originally give to a gold mining company founded near the village of Chiksan, Korea, in 1906, by a group of American engineers. Translated, the word Chiksan means "mountain of gold". The mining operation prospered in Korea until shortly after World War I when it was dissolved and the group of engineers moved to the United States.

In Fullerton, California, they formed a small oil company and once again gave their company the name Chiksan. Just as the Chiksan Mining Company prospered in Korea, so did Chiksan Oil company prosper in California with producing oil wells in the Huntington Beach and Long Beach areas. During this period Chiksan developed, for its own use, a number of tools and pieces of machinery that brought significant advances in oil well drilling. These tools were so successful that in 1928 the company devoted itself exclusively to the manufacture of oil tools. New offices were established in Brea, California.

As the company prospered, new items were introduced to the market. Among these items was the ball bearing swivel joint, a special pipe fitting used to interconnect metal piping so that it becomes as flexible as rubber or metallic hose.

From the beginning, the swivel joint was a success, and it quickly became evident that it could be used in a wide range of applications in a great many industries other than the oil industry. One good example of this versatility of the swivel joint is its use in large loading arms for loading liquid cargo into ocean-going tankers where it must withstand temperatures as low as -150°F , and as high as $+250^{\circ}\text{F}$.

So, in the early 1930's, the company name was changed to a less restrictive Chiksan Tool Company, and sales outlets were introduced to the industrial markets throughout the United States and Canada. In the ensuing years, manufacturer's representatives were appointed throughout the world, and manufacturing licensees were established in England, Japan, France and Mexico.

In 1945, the company name was again changed, this time to the Chiksan Company, and in 1946 expansion began with the acquisition of Well Equipment Manufacturing Company (WECO) in Houston, Texas. Chiksan was acquired by FMC Corporation in 1955 and currently operates as a part of Fluid Control Division.

FMC Brea is part of the Petroleum Equipment Group of FMC which includes Fluid Control and Wellhead Equipment Divisions located in Houston, Texas, Sens, France and numerous other divisional offices throughout the world.

Plant, Office Expansion

Expansion of the Chiksan company plant in Brea is under way to increase office area and warehouse and assembly facilities.

A new building will be constructed adjacent to the present main office building. The new structure will have 28,000 square feet of working area and will consist of a finished material warehouse and assembly section, with an area to accommodate

Purchasing, Personnel, Cost Accounting, Price Estimating, Production and Material Control, and Sales Development departments.

J.O.S. Board Delays Action On Brea Contract

Permission for Brea to dispose of its sewage in the Joint Outfall sewer line running through Fullerton was delayed when the question came before the J.O.S. board at a meeting last Thursday night, Jan. 8. The board explained the delay by stating that they wished to receive bids on the new land section of the sanitation system and see if they were acceptable before granting any further rights on the outfall sewer.

J.O.S. Must Approve

The appearance of the Brea representatives before the J.O.S. group was only one step in lengthy efforts to improve local sewage disposal. After several weeks' negotiation, the city of Brea approved a contract with Fullerton in which Fullerton agreed to sell to Brea certain capacity rights in the outfall sewer's Euclid avenue line. This line runs through Fullerton, but before any J.O.S. member released part of their rights in the outfall system, the sale must be approved by all of the other mem-

Brea city administrator, A. W. DeLoach, attorney, Harold McCracken, and engineer, Sid Lowry, attended to win this approval when they went before the board last Thursday night.

Bids Received

According to Mr. Studebaker, bids on the land section of the sanitation system were received by the board yesterday. Brea must now wait until the board approves the bids as being satisfactory before negotiations can take

Wildcat Five Plays at Local Gym Tomorrow

The Wildcat Five will get their first experience in the state basketball competition when they play at the Garden City gymnasium at the high school at 10 o'clock tomorrow night. The game will be an open action affair and the Wildcat Five will be seeking to

win a record in Orange County. They were defeated Tuesday night by the Garden City team on their first league game. Capt. Captarano, 41-

They will be seeking to win a record in Orange County. They were defeated Tuesday night by the Garden City team on their first league game. Capt. Captarano, 41-

Included will be a large sales conference room which will also serve as a display room for plant visitors.

By July of This Year

Existing office and warehouse facilities on the building site are now being removed preparatory to construction of the new building. It is expected that the expansion will be completed By July of this year.

The new structure will incorporate the latest features of architectural design. The most modern sprinkler and fire protection system will be used throughout.

New equipment will be used in the warehouse section for rapid handling and storing of Chiksan ball-bearing swivel joints, all-metal hose, and other products. Installed in the Assembly depart-

Liquor Store Closed For Law Violation

The Imperial Liquor store at 221 South Pomona, was closed January 12 by order of the Board of Equalization because of a violation of regulations by the previous owner. It must remain closed for 15 days, or until January 27, Tony Haro, present proprietor, said.

Mr. Haro had no connection with the liquor store when the violation occurred, but must abide by the license suspension which is the penalty imposed for the violation.

He said he is planning a grand opening of the liquor store for the end of this month. However, the store will be open again for business as usual on Tuesday morning, January 27.

Two Breans Named For 'Y' Legislature At Sacramento

Lynn Blystone has been selected as one of the assemblymen who will represent this district at the Fifth Annual YMCA Model Legislature in Sacramento from Feb. 19 to 21. His name was announced today by Howard O. Campbell, general secretary of the North Orange County YMCA.

Brea will have another representative at the meeting in the state capital in Vic Millar. He and several other boys from this area will attend as delegates in training.

The "Y" delegates from this sector presented their proposed bills to the District Board meeting last Monday night. Members from Brea who heard the reading of the bills were Howard Stuart, John Daugherty and Frank Schweitzer, Jr.

Door Mail Delivery Starts on Locust, Alder Streets Monday

Residents in the 100, 200, and 300 blocks on E. Locust and those in the 500 and 600 blocks on E. Alder will be getting their mail delivered to their doors starting next Monday, according to an announcement made today by Brea postmaster Leonard DeGross.

Authorization for the city delivery service in the new residential areas came from the post office department early this week.

Postmaster DeGross reminded residents that they must have suitable mail receptacles or door boxes installed and each home must be inspected if they desire the new service.

ment will be the most modern equipment for cleaning, processing, and assembling material.

Increased Efficiency

Completion of the new building will increase the efficiency of plant operations and improve customer service, according to plant officials.

Ralph S. McLean, structural engineer of Fullerton, is handling details of the construction. The architect is Everett Lynn Child of Fullerton. Wherever possible, local contractors and suppliers will be used.

Latest Step

The addition to the Brea plant is the latest step in the steady expansion program under way at Chiksan company. Production area was increased and additional machinery installed at the plant last year. Similar expansion took place at the Houston plant of Well Equipment Mfg. Corp., a division of Chiksan. The company recently announced that property had been purchased in Brantford, Ontario, Canada to be used as a site for a new manufacturing plant. The new Canadian subsidiary will operate under the name of Chiksan of Canada, Ltd.

P.E. Will Keep Brea Rail Line, Mayor Learns

A letter from the Pacific Electric Railway company was received by Brea Mayor Charles McCart relative to the recent zoning of land adjacent to the P.E.'s tracks late last week.

It should dispel fears, expressed by some people recently, that the rail line was due for abandonment since it states that P.E. "has no intention of abandoning its line to Brea . . ."

The full text of the letter follows:

Mr. Charles O. McCart
Mayor, City of Brea
415 West Elm Street
Brea, California
Dear Mr. McCart:

This is written to confirm matters discussed in recent conversation of our Engineer, Mr. R. E. Moyer, with you relative to zoning matters in the City of Brea.

Pacific Electric Railway Company looks for its future development to those areas which as yet have not been fully utilized for industrial purposes, and the territory in and adjacent to your city is among those which will undoubtedly be developed at an early date. This Company has no intention of abandoning its line in Brea and hopes that it may have a long period of service to your community as a common carrier serving industrial developments in and adjacent to your city.

The manner in which the right of way and property adjacent to our tracks in the city of Brea has been zoned is quite satisfactory to this company, and I trust that your planning group will continue with progressive zoning.

Very truly yours,
F. W. SPENCER,
Chief Engineer

Money Alloted By School Board For New Land

...sited are located in Santa Fe Springs
 ...ment and Taft, California. Sales of
 ...built offices are located throughout the
 ...time. United States, Mexico and Cana-
 ...a of United States, Mexico and Cana-
 ...are scattered throughout the world.
 ...of In the past 44 years of Shaf-
 ...fer Tool Works existence the
 ...number of its employees have in-
 ...creased to over 1000, many
 ...ants of them in the Brea home plant.

ncies don't
 payday.

ash - instantly -
 balance Plus
 ount.

UNITED
 CALIFORNIA
 BANK
 LITTLE MORE FOR YOU

Polar Makes Orange Juice, Fruit Bases

Brea adds a lot of liquid sunshine to the country with more than 350,000 gallons of orange juice per month produced by Polar Chilled Products, 237 N. Orange St., Brea.

The local company which employs some 38 people in a major producer of orange products distributed by dairies in California, Nevada and Arizona.

The company also manufactures canned frozen juice products and fruit bases for novelty bars.

Key owners in the company include Frank Gilbert, president, J. Lee Abbott, vice president, and B. L. Carruth, secretary.

With sales of nearly six million predicted for the next 12 month period, the growing organization shows a rate of increase in sales of some one million dollars per year.

Organized in Dec. of 1953, Polar Chilled products at first were manufactured by four of the original corporation owners.

Esco Rubber Moves Here In 1949

E. W. Sullivan, owner and founder of Esco Rubber Products, and Esco Rubber Company moved from Los Angeles in 1949, choosing Brea to locate in, because of the friendly, congenial people and the ideal climate. Sullivan started Esco Rubber Company in 1949, in a 800 sq. ft. building, located on Brea Blvd. (formerly Pomona Avenue) with one employee, the owner. Over the past 11 years, Esco has grown to 14,000 sq. ft. of floor space with 25 employees.

Esco Rubber Company manufactures small Rubber

Chiksan Co. Grows With Brea

Chiksan, a familiar name and a familiar landmark in Brea, has been sharing Brea's progress for the past 39 years. The plant, currently located at Deodora and Brea Boulevard on approximately 3 1/2 acres of land, has been in operation since 1928. From a few employees and a small plant, Chiksan has been expanded to its present size with other plant locations in Houston, Texas, licensees in Tokyo, Japan, Stockport, England, and Monterrey, Mexico. A plant was established in Sens, France and is now a division of the FMC corporation; branch sales offices in New York, Chicago, Cleveland, Pittsburgh, Cincinnati, Memphis, Oakland, and manufacturers' representatives in all other major cities.

The Weco Division, located in Houston, Texas, has salesmen contacting the industrial and oil field markets in the Mid-Continent area.

Chiksan's subsidiary, Chiksan of Canada, has offices in Edmonton and Montreal with manufacturers' representatives covering the Maritime Provinces and oil field supply stores supplying the oil fields of Western Canada.

The International Division, located in Houston, Texas, has branch offices in Holland, Venezuela, and representatives in every major country in the world, particularly those countries rich in oil field drilling and production.

The main office in Brea, California directs the activities of this far-flung organization, channeling the orders for our products to the various licensees' plants and directing engineering and sales development.

The founders of Chiksan was a group of mining engineers who were given a lease to do gold mining in Korea. In 1906, this venture was started in the town of Chiksan, Korea. The name of the company was taken from the town, and Chiksan is a Korean word meaning mountain, or hill of gold. This mining operation prospered for many years, but discontinued

United States. Offices were set up in nearby Fullerton and new company was formed and named Chiksan Oil Company. Chiksan Oil Company had producing wells in the Huntington Beach and Long Beach areas and continued activity in the oil industry for a number of years. During this period of time, the engineering group developed many tools and pieces of machinery that brought about great advances in the drilling of oil wells. Patents were obtained on many of these devices and in 1928 the Chiksan Oil Tool Company was formed and a manufacturing plant was established in Brea. It was at this point that its present manufacturing had its beginnings.

During the early years, activities were directed at the manufacturing of oil well drilling equipment and, as the company prospered, new items were designed, developed and introduced to the market. During this development stage, the ball bearing swivel joint was developed and introduced to the oil industry. From the beginning, the swivel joint was a success and it could be seen that the swivel joint could be used for a wide range of applications in a wide range of industries.

The swivel joint is a special pipe fitting used to interconnect piping and allow rotation of the pipe. By using one, two, or three swivels, steel piping can be made as flexible as hose and this flexibility can be controlled so that the pipes can be swung into various positions with a minimum of manpower. The joint consists of a series of metal parts connected and locked together with two rows of ball bearings which allow rotation. An elastomeric seal ring or other packing material is placed between the rotating parts to seal against leakage of vacuum or pressure. These packing units are many and varied so that many different liquids, gasses, or chemicals can be handled. The metals in the body portion range from steel to aluminum, bronze, monel, and

size to 48" pipe size in a variety of styles containing one, two, or three swivel within a given swivel joint. These combination provide innumerable possibilities for applications through a wide range of industries. In 1939, the company name was changed to Chiksan Tool Company and our Chiksan group structure took form. In the early 30's, the swivel joint was introduced to the industrial market through the appointing of manufacturers' representatives in the eastern industrial cities and in the ensuing years additional manufacturers' representatives were appointed throughout the world. Licensee agreements were made in England, Japan, and Mexico and a manufacturing plant established in Sens, France.

In 1945, the name was changed to Chiksan Company. All the manufacturing activities had been carried on at the Brea site until 1946 when Well Equipment Manufacturing Company, Houston, Texas was purchased. This was the first major expansion and Chiksan Company began its steady growth.

In 1955, Chiksan Company was acquired by FMC Corporation and headquartered in San Jose, and

and we became a division of FMC in 1961.

Today, Chiksan stands No. 1 in its industry. The products manufactured have progressed from the oil tools to swivel joints to assemblies, consisting of swivel joints and piping to load tank cars and tank trucks of chemicals and other products ranging from liquid sulphur at 256° above zero to cryogenic gases at 258° below zero. Other product lines are marine loading equipment ranging in size from 6 inch pipe by 20 feet long to 16 inch pipe by 70 feet long. This marine loading equipment is used to load barges on the inland waterways and super-tankers at major sea ports, requiring thousands of barrels of crude oil to fully load them. Other products are designed for work in the oil fields handling cement, acid, muds, and other liquids used in the drilling oil wells.

These joints are subjected to pressure to 20,000 psi. Thousands of joints are sold throughout the steel industry, chemical industry, food processing industry and virtually every other type of industry that handles water, chemicals, gas, oil and other fluids in their processing.

Research and development programs are constantly carried out to develop new products for introduction to the market to insure continued growth for Chiksan and maintain Chiksan's position in the swivel joint industry. These R & D programs have developed numerous new products for sale in the world markets and are constantly improving standard products to better suit the demands of today's industry. These new and improved products insure continued growth of Chiksan and will provide more jobs and stability for the community. By pursuing this research and development plan, we insure continued growth for Chiksan.

We look forward to help Brea celebrate its 50th birthday.

Earthquakes and volcanoes have killed an estimated 3 to 5 million persons in the past 1,000 years.

Kentucky is one of 25 states aiming at a "hog cholera free" Finland's 60,000 lakes make

Less than 7 per cent of the British countryside is wooded.



PLANS CILITY

is re-
com-
y did
s for
to be

wner
s ex-
City
t.
eum
wned
hica-
y lo-

cated on about 20 acres on Brea Boulevard and Lambert Road. It employs 300 persons.

Reports earlier this year indicated that Chiksan was eyeing property for relocation in the City Of Industry.

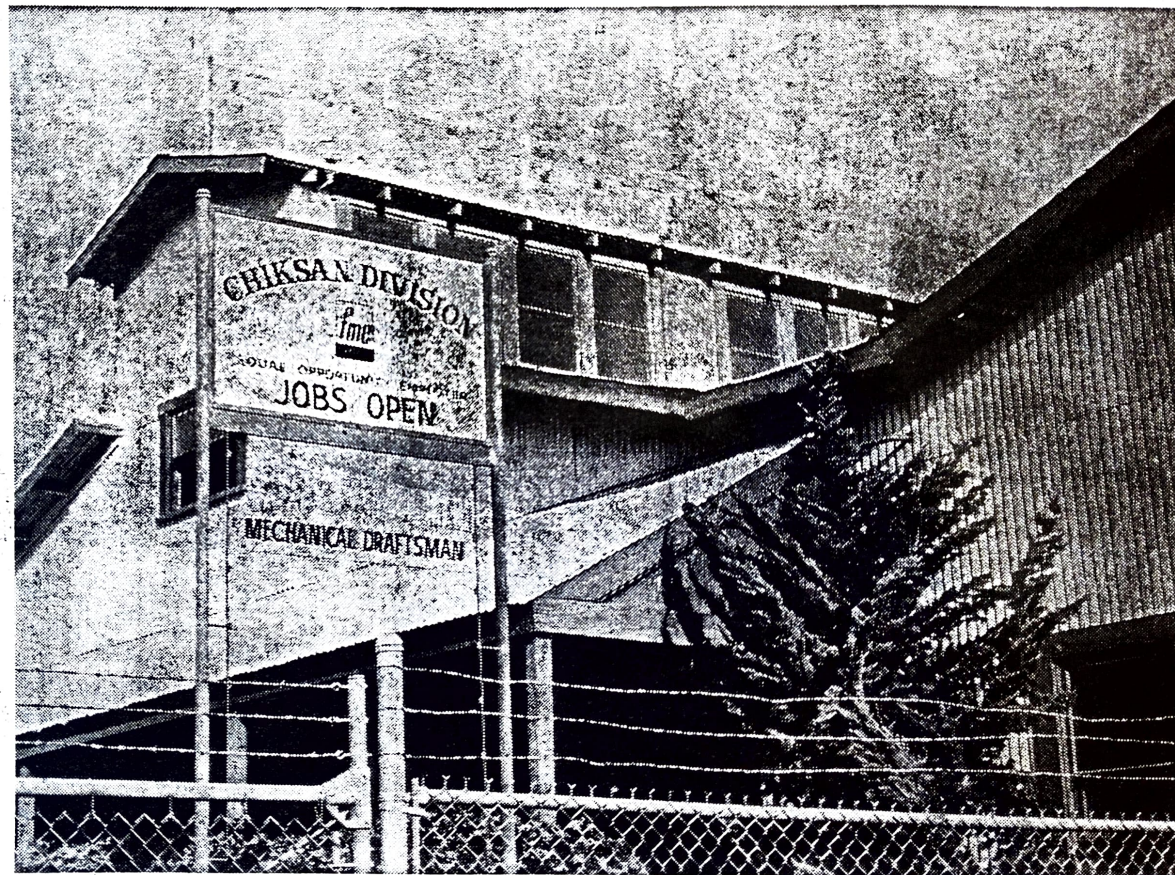
Tretolite Company is a petrol chemical company owned by Petrolite Corporation of St. Louis, Mo.

Officials say plans for relocation of Chiksan will be made sometime shortly after the purchase becomes final.

s Handling Hills Airport

s po-
Hills
some
for
ash,"
d,
ture,
air-
ould
xist-
ined.
that
ngus

either the corporation or other cities without prior authorization from Anaheim. He is to get concurrence on the legal language from other involved attorneys.



HEADING OUT — The Chiksan Division of FMC Corporation apparently has its days numbered at this Brea location, Brea Boulevard and Lambert Road. The company is now

negotiating a purchase agreement for a 20-acre parcel at 200 W. Puente St. for relocation and expansion of its facilities.

(Star-Progress Photo)

Airport Firm Suspended School Trustee Action 'Music

Chiksan Operation In Brea Dates Back To 1928



The new directors were installed at the dinner.

Chiksan, a familiar name and a familiar landmark in Brea, has been sharing Brea's progress for the past 41 years. The plant currently located at Lambert and Brea Boulevard on approximately 3½ acres of land, has been in operation since 1928.

many years, but discontinued operation shortly after World War I and returned to the United States.

Offices were set up in nearby Fullerton and a new company was formed and named Chiksan Oil Company.

n Soon'

elling them much limited States and the area. tion he went to work in the city ce and met Har- v Brea's Public

After that he went to Santa Fe Springs as an administrative intern and went through the line to become assistant manager, a position he held until coming to Brea.

"The two communities are similar," he said. "They have the same population, but Brea will grow much more."

He said that Brea is much more residential than Santa Fe Springs, but with less industries plants.

About the city council Wedin said, "They're good councilmen working awfully hard to make sure that growth is good timely growth. They have a keen awareness as far as the area grows and you preserve the spirit as it now exists."

Wedin, who lives in Brea, is a graduate of Brea-Olinda High and came to the city in 1954 from Minnesota.

A significant growth in Brea is foreseen in the near future and City Manager Wayne Wedin will be one of the key figures in the city's plans.

New Policy

WASHINGTON (UPI) —The Army and the Air Force will adopt a new policy of personally notifying the next of kin of seriously wounded servicemen, according to Rep. James G. O'Hara, D-Mich. The Navy and Marine Corps already follow such a procedure.

Municipal-Type Airport Proposed

BREA—A decision made in November by the Brea city council, and just before that by the County Board of Supervisors, will probably materially affect the progress of the city, and has already been of some importance.

Later in October the city council approved a resolution calling upon the county to include the Brea-Olinda dump site in its master plan studies of the county's airports. The county followed that action with the announcement that it would study the site as a possible municipal-type airport.

According to Mayor William Hamilton and Councilman Robert Clark, who was later named to the county airport commission, the city was interested in the site because its elevation of

1150 feet and the remote location offers an area for aircraft operations that would not interfere with any developments in the area, and still be able to serve the growing needs of Brea and the greater North Orange County area.

Although some county planning officials suggested that the county study the feasibility of placing a regional airport on the site, with facilities for jets, the small amount of acreage available and the proximity of Ontario International Airport has generally hampered studies of that possibility.

But industrial organizations and the Brea Chamber of Commerce have supported the study, and the study has been included in the county's continuing studies.

Jackson Bros. Eager To Serve Homeowner

BREA — Although many Brea residents may not be aware, they have the opportunity of purchasing a cabinet for their home from Jackson Bros. Cabinet Co.

Previously thought to be exclusively a manufacturing company for home contractors, a spokesman for the firm indicated that Jackson Bros. would always be eager to serve the private homeowner.

He did indicate, however, that all business through Jackson Bros. is done on a "tailor-made basis."

This means that there are no showroom display models avail-

able. All work performed by the company is done to the specifications of the customer.

Located in Brea since March, 1960, the cabinet making concern is owned jointly by Edward and Floyd Jackson. Nearly 70 people are employed by the company; one-half of which work in the shop.

The work done by Jackson Bros. is by no means exclusively local. The spokesman indicated that cabinets have been made for contractors in San Bernardino and Riverside counties as well as in the counties of Los Angeles and Orange.

By Bob Kubin 2/27/75

The Chiksan name is Korean, meaning "Gold Mountain".

Chiksan was originally a gold mining

Company in Korea owned by Albert Bagnell.

R → J. S. Bradford, Charlie Truby & Jim Wilson were associated with the company there.

After leaving Korea these people started the Chiksan ^{Gold} Co. in Brea with Bagnell as main stock holder. Bradford was President,

Truby ^{at Henderson} and Jim Wilson were the key personnel in the company. The offices of the Co. were in the

Chapman Bldg. in Fullerton & the shop was located in the 200 ^{W. 1st} St. Pomona ^{and} (Brea Blvd) in Brea. The Brea Company was

started in the summer of 1928. — The main product was a rotary drill bit invented ~~to~~ and patented by V. J. "Jim" Kubin (my father).

Locking money for patents, etc. Kubin took Perry Funderburk as a partner for financial backing & gave him half

and probably others I don't recall

the patent rights in return.

Kubin was hired as the first employee of the company, as he had the patent. Prior to this, Kubin had worked with Frank Ellington in Huntington Beach oil tool shop and Ray Bagby in Larreace and brought Ellington in to the company. Frank Ellington had worked at George Hanson in ~~an~~ oil tool shop in Chicago. I'll get him to come to work for Chicksa. These men were shop employees. Shortly after the company was formed Funderburk sold his half of the patent to the Chicksa Co. After the crash of '29 the company came to Kubin and told him, if he ~~didn't~~ would sell his half of the patent to them (then they would own all of it) they would quit producing the rotary bit and they would close the shop putting all of them out of a job. Kubin didn't want that to happen so he sold his half for \$1,500. (cash) & a promise

was a life time job. — The company
later produced a reamer to go with the
bit — they produced this bit until
1938 or 39 and then started producing
the "Chickson Swing Joint" (Swivel Joint)
Kubens' original bit patent was sold
to a company in England & I haven't
heard of it since.

The Chickson Joint was called a
"Swing Joint" until a salesman with
"Chickson Swing Joint" printed on the
side of his company car was asked
by a "Car" cop in Los Angeles drive-
in restaurant ~~where~~ where the dance
hall was (this was in the days of
swing dancing) the name was then
changed to Chickson Swivel Joint.

P.S. Chickson Co. also owned a gold mining
company in northern Calif. in the ^{early} days
of the Chickson Tool Company.