

Celebrate the Day Away...
FREE Family Fun!

Brea Community Center Opening
Saturday, July 27, 1996

1-4 p.m. Ribbon Cutting and Open House
6-9 p.m. Family Hoedown and Brea Lions Club BBQ

(Corner Madison Way & Randolph Ave.)

Ribbon Cutting and Open House 1-4 p.m.

Discover the Community Center...

- Official ceremonies and historic photo
- Ongoing demonstrations
- Music by the KIIS FM Street Van
- Bridal and evening wear fashion show by *Allusions*
- Wellness testing by Brea Community Hospital
- Face painting, tatoos, and arts & crafts
- Interactive aerobics and fitness demonstrations
- Taste-treats from local caterers including the Center's own Bistro 695
- Raffles, give-aways, food, fun and surprises!
- Norman Major Brass Quintet
- Hockey puck shooting contest sponsored by Brea Hockey Club

Family Hoedown and Brea Lions Club BBQ 6-9 p.m.

Come back in the evening for food and entertainment...

- Live western music featuring *The Cody Bryant Band*
- Youth activities in the gym sponsored by Brea Youth Pastors
 - Foot-stomping good time!
 - Food, drink and prizes!
 - Line-dancing lessons

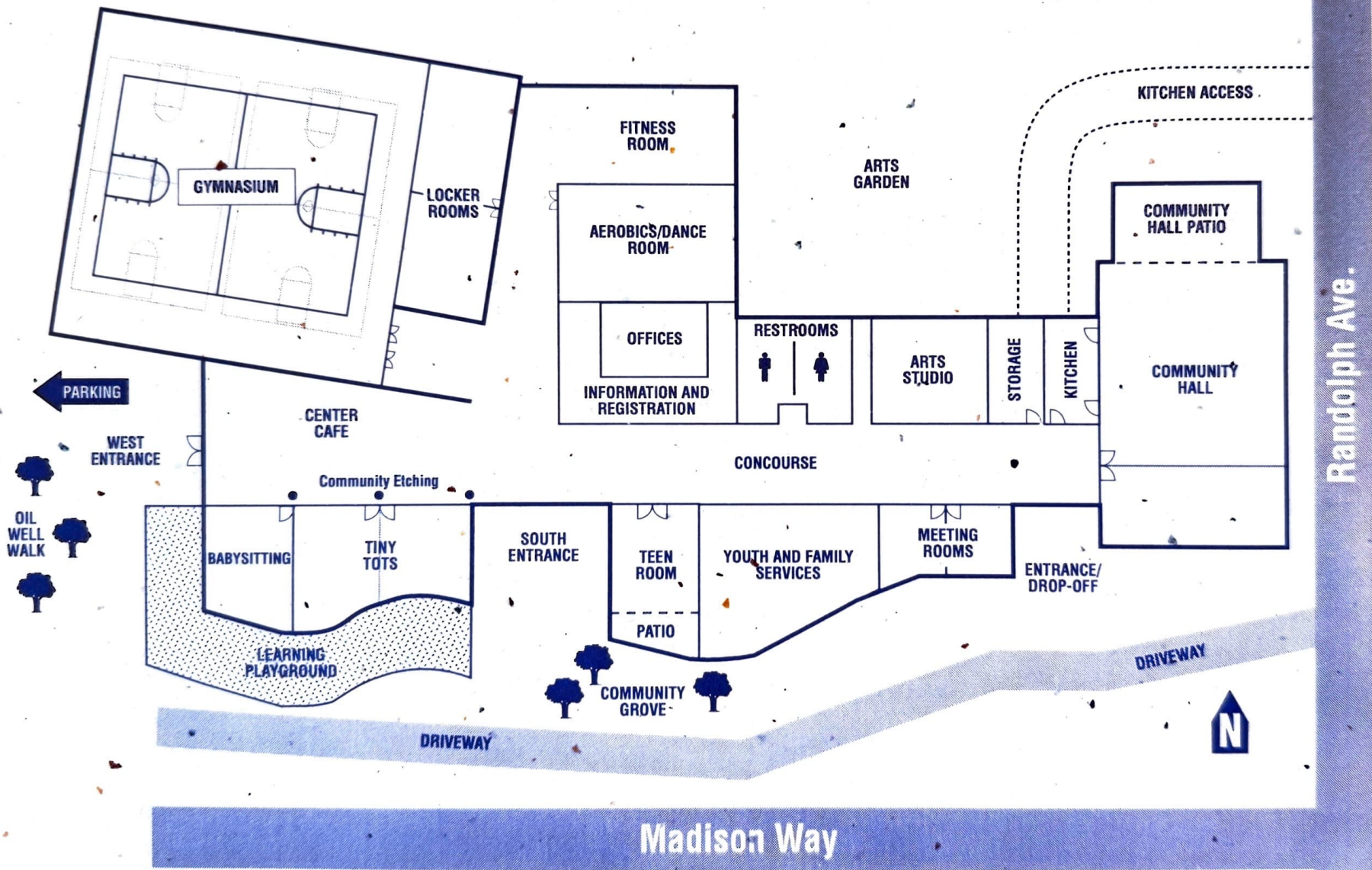
*Wear your Community Center ribbon
and come early so you don't miss a minute...*

*Dinner tickets: \$5—family;
\$2—individual;
\$1—child and senior*

For dinner tickets or more information, please call... **714/990-7735**

The Community Center was funded by the Brea Redevelopment Agency

Brea Community Center Floor Plan



BREA COMMUNITY CENTER

◆◆◆ Facilities ◆◆◆

This 51,000 square foot, state of the art facility will be open and accessible to all ages and interest groups, as well as to the business community. The Center will be open from 6 a.m.-10 p.m., Monday through Friday; from 10 a.m.-8 p.m. on Saturday; and from 12 p.m.-5 p.m. on Sunday. The Center, located at Madison Way and Randolph Avenue, will be open for special events and is the perfect place for weddings, banquets, receptions, and private meetings. An expansive plaza provides space for outdoor events, while a 300 foot long concourse connects a multitude of programs all under one roof. The concourse's glass wall, transparent by day and lantern-like by night, provides a warm invitation to the neighborhood. A pedestrian drop-off area and ample free parking, with 254 spaces, add to the building's convenience.

Community Hall

This elegant 5,800 square foot reception space features a hardwood floor, access to an enclosed patio with trellis covering, and coffered ceilings with lighting, making it the ultimate location for a holiday banquet, retirement party, anniversary celebration, wedding reception or class reunion.

- ◆ May be divided for smaller receptions or meetings
- ◆ Private 2,650 square foot landscaped patio
- ◆ Catering kitchen with loading area accommodates the most basic to elegant food service
- ◆ Tables, chairs, portable bar and portable stage
- ◆ Seating for 340 for banquets/receptions and 750 maximum capacity theatre style

Meeting Rooms



Two rooms, 500 square feet each, are designed for business meetings, small seminars, training classes and breakout spaces for large seminars held in the Community Hall.

- ◆ Accommodates 40 people in theatre style seating or 25-30 for classroom seating
- ◆ Wall mounted marker/boards
- ◆ Windows looking out to the plaza
- ◆ A/V equipment available

Arts Studio and Art Garden



A 1,530 square foot studio that opens onto a private 6,600 square foot landscaped Art Garden is the ideal location for a wedding ceremony, outdoor reception, or private party.

- ◆ Ceiling to floor windows look out onto the Art Garden
- ◆ Demo table with mirror, 13 craft tables, stools, chairs and sink
- ◆ Classroom-style seating for 32
- ◆ Art Garden occupancy 210

(over)

Gymnasium



The gym accommodates a variety of sports including basketball, volleyball, indoor hockey and soccer, as well as dances and theme parties. It's also a great location for card or craft shows.

- ◆ 11,236 square foot gym
- ◆ Bleacher seating for 360
- ◆ Two full court basketball courts
- ◆ Volleyball courts

Fitness Area

The fitness area includes facilities and equipment necessary for strength training, cardiovascular fitness, specialized wellness programs, martial arts, exercise, and dance classes for all ages.

- ◆ Aerobic/dance studio with 1,800 square foot cushioned hardwood floor, mirrored walls, and ballet bar
- ◆ Wireless mic stereo system and platform
- ◆ Fitness room with training equipment
- ◆ Cardiovascular equipment
- ◆ Shower and locker facilities for men and women

Tiny Tots Area



A 900 square foot play and learn room is an ideal location for children's birthday parties or as a children's play area in conjunction with private rental of the Community Hall.

- ◆ Linoleum floors with rollout carpet section
- ◆ Unique learning playground
- ◆ 7500 square foot outdoor playground
- ◆ Room occupancy 35
- ◆ Picnic tables and play equipment
- ◆ Private kid-size restrooms

Youth and Family Services Area

This 2,500 square foot wing houses a variety of services for youth and families.

- ◆ Board room accommodating meetings of up to 10 people
- ◆ Two small meeting rooms accommodating 4-6 people
- ◆ Counseling offices
- ◆ Comfortable reception area, office support, equipment, and work room

Teen Room

This area will be the focal point for a host of activities planned by and for teens. It is conveniently located adjacent to the Youth Employment Service and Youth and Family Services.

- ◆ 868 square feet
- ◆ Private enclosed patio
- ◆ 45" television and VCR
- ◆ Sound system
- ◆ Ping pong/pool table

Center Café



- ◆ Serving quick, nutritious snacks and light meals
- ◆ Seats 50
- ◆ Windows offer view of gymnasium play



BREA
Community
CENTER
WELCOME!



BREA *Community* **CENTER**

Celebrate the Day Away!

**July 27
1996**

C
R
E
A
T
E

BREA
COMMUNITY
CENTER



M

E

E

T



BREA

COMMUNITY

CENTER



¡Vengan a celebrar el día entero!

Diversiones gratis para la familia

Inauguración del Centro de la Comunidad de Brea

Sábado, 27 de julio, 1996

(Esquina de Madison Way y Randolph Ave.)

1 a 4 p.m. Corte de la Cinta Inaugural y "Open House"

Rifas, obsequios, comida, diversión y sorpresas

6 a 9 p.m. Festejo para la familia y barbacoa del Brea Lions Club

Vuelvan a la noche para comer y divertirse

Para comprar entradas para la cena o por más información, llame al **(714)990-7735**

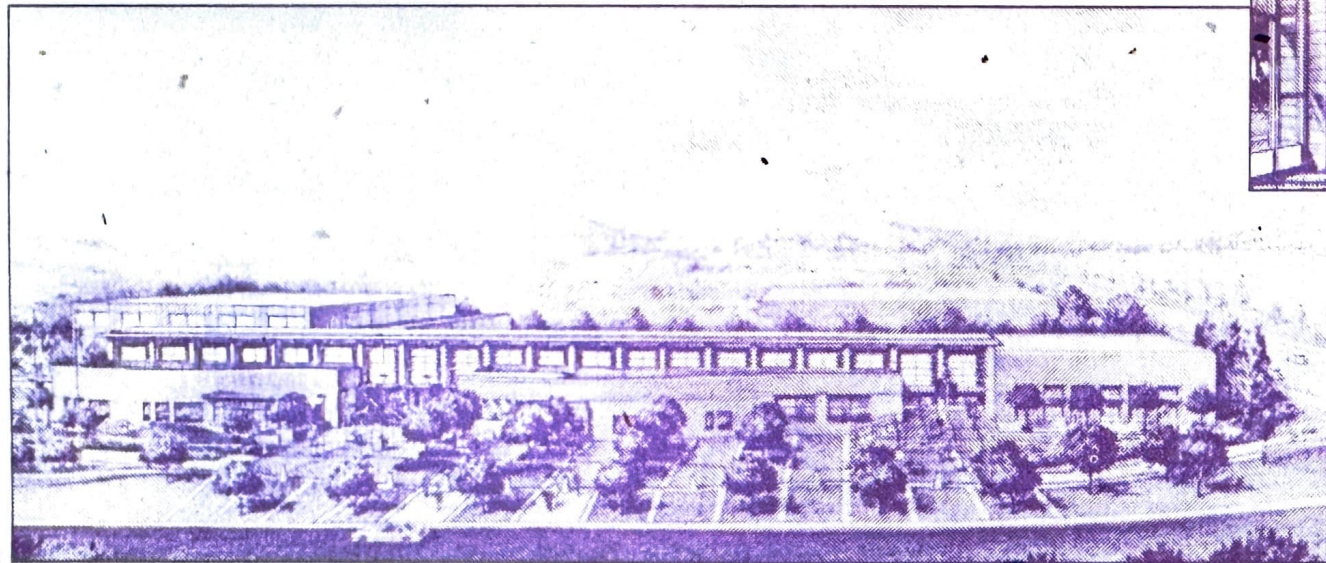
*Lleve su insignia del Centro de Comunidad y venga
temprano para no perderse ni un minuto*

Precio de la cena: \$5 - familia

\$2 - adulto

\$1 - niños y ancianos

The Brea Community Center... *Be a part of it!*



The countdown to a "grand" opening in 1996 is on...

BE A PART OF IT... The Brea Community Center!

Designed by the community, this beautiful 51,000 square foot facility, located on the corner of Randolph Avenue and Madison Way, is guaranteed to be unlike any other community center in Southern California. From the community-inspired design, to the amenities, to the programs and services, the Brea Community Center will be truly unique and will fulfill a dream long-envisioned by people of all ages.

As the Community Center takes shape, community excitement will grow with each milestone passed...Don't just sit back and watch, show your support and help make it happen!

To make it easy for everyone "to be a part of it," we've designed a Community Center Contribution Program to meet just about every interest and pocketbook. Personalize a hand-etched glass pane which will be part of an original work of art adorning the west entryway. Consider purchasing a Gallery Pear tree to decorate the south entrance, or buy a Liquid Ambar tree to be planted along the Center's Oil Well Walk.

Perhaps you'd rather make a contribution to support the Brea Kids Count Club, a free after-school program, or the Helping Hands Scholarship Program. Or maybe you'd rather volunteer at the Center. Whatever your interest, we need you to "be a part of it."

Long-awaited, the Brea Community Center is on its way to becoming a reality. Opening in 1996, the Community Center will serve as a focal point for the people of Brea to come together to play, learn, socialize, create, seek help, relax and celebrate.

Through a myriad of programs, activities and services, the Community Center will reflect the ever-growing and changing interests of Breans of all ages. You can be a part of it now!

Plaza Grove

Twenty-two Gallery Pear trees will create a welcoming invitation to Community Center visitors. This grove of beautiful trees will adorn the main entrance of the south plaza. Donor names will be inscribed on a black granite plaque at the base of each tree. Additionally, donors will receive a certificate suitable for framing and will be invited to the Community Center Grand Opening. This is the perfect way for a business or organization to make a lasting contribution to the community. Minimum donation is \$2,500.

Oil Well Walk

Be a part of the "Oil Well Walk," certain to be one of the focal points of the Community Center. Purchase one of eleven Liquid Ambar trees that will border a walkway designed to represent an early 20th century oil derrick. Your name will be engraved on a permanent granite marker located in front of the tree. Minimum donation is \$500.

Community Etchings

One of the Community Center's most intriguing features is an original glass art sculpture by Washington artist, Ro Percer. Three pillars, consisting of 180, 6" x 6" engraved glass panes, create ever-changing patterns of light inside the west entrance.



Leave a lasting remembrance or message by purchasing and personalizing one of these panes. You can personalize etchings for yourself, your friends, or your family (memorialize a loved one, write an inspiring message for all to read, say thanks to a friend, tell someone you love them). The possibilities are endless! Each glass pane is constructed by hand out of brilliant "post consumer, recycled" green glass using a 1906 glass press. Minimum donation per pane is \$100.

Brea Kids Count Club

Kids count in Brea, make a lasting contribution to the youth of today and leaders of tomorrow—be a member of the Brea Kids Count Club, a free supervised afterschool program to be offered at the Community Center every week day. Kids can come to the Center afterschool with their friends and play games, get help with their homework and make craft projects in a safe, supervised environment. Your financial support of this program is one of the best investments you can make in Brea's youth. Minimum suggested donation is \$10.

Volunteer Opportunities

Brea volunteers are one of the reasons Brea is such a special community. Volunteers are the "heart" of our programs and services. There will be many meaningful volunteer opportunities at the Community Center. Volunteering gives people an opportunity to give back to the community—neighbors helping neighbors, seniors assisting with babysitting or serving as mentors to teens. Volunteers of all interests and ages, from teens to seniors, are needed to help staff and operate our new Community Center.

Helping Hands Scholarship Fund

The Helping Hands Scholarship Fund allows others to share life-enriching experiences. Your financial gift can give a teenager the chance to play in a basketball league, a toddler the opportunity to take part in a Tiny Tot class, or sponsor a single parent through a computer training program. Helping Hands Scholarships are given to those in financial need to cover the cost of enrollment in City sponsored classes and activities. Minimum contribution is \$10.

If you would like more information, please call

990-7771

Brea Community Center Contribution Form

I want to be a part of it...The Brea Community Center! Please accept my tax exempt donation (If paying by credit card, include correct information below):

Name: _____

Address: _____

Phone: (day) _____ (evening) _____

If donation is by credit card: Visa MasterCard Discover

Credit Card # _____ Exp. Date _____

Signature _____

Complete and mail this form with your check, payable to the "Brea Community Center" to: Brea Community Center, City of Brea, One Civic Center Circle, Brea, CA 92621.

Yes! I want to be a part of it! (please check box and include donation):

Plaza Grove - \$2,500 donation

Oil Well Walk - \$500 donation

Community Etchings* - \$100

(Inscription: Two line limit, 20 characters per line, including spaces)

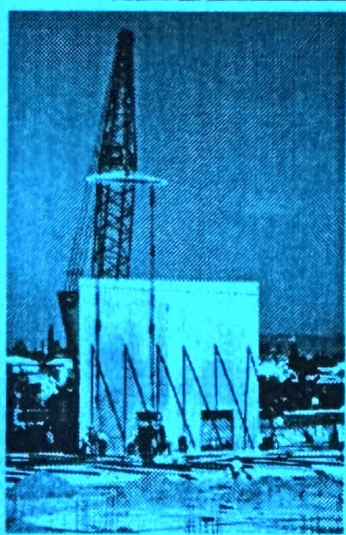
Brea Kids Count Club sponsor - \$10 or more

Helping Hands Scholarship Fund - \$10 or more

*Provide exact inscription wording below for Community Etching:

**Your donation does not entitle you to actually receive any item listed in this brochure, but rather is a charitable contribution to the Brea Community Center. Thank you for investing in Brea's future...

Celebrate
the Day Away!



Brea
Community Center

Funded by the Brea Redevelopment Agency

Opening Festivities

July 27, 1996

Celebrate the Day Away...
Brea Community Center
Opening Festivities

**Ribbon Cutting and
Open House**

Saturday, July 27, 1 - 4 p.m.

Join the Brea City Council in commemorating the completion of a community dream. Don't miss this chance to be part of history-in-the-making. Opening festivities kick off with the official ribbon-cutting ceremony. Next, discover what the Community Center has especially for you. Enjoy ongoing demonstrations, a roller hockey exhibition, arts and crafts, games, raffles, give-aways, free refreshments, aerobics and fitness classes, wellness testing, a fashion show, and more. Come early so you don't miss a minute... *Remember to wear your Community Center ribbon!*

**Country Western BBQ and
Family Hoedown**

Saturday, July 27, 6 - 9 p.m.

The celebration continues with this taste-tempting, foot-stomping, Country Western BBQ and hoedown. Tickets: \$5—family; \$2—individual; \$1—child and senior. Free line dancing lessons, live music and door prizes. To purchase dinner tickets call 990-7735. *BBQ sponsored by the Brea Lions Club.*

Create, celebrate, hang out, learn,
enjoy, play, exercise, relax at
The Brea Community Center!

*It's unlike anything you've
seen before! Designed by
the community for the
community. This wonder-
ful new facility is packed
with health, wellness,
social and recreational
opportunities for every
member of your family.*



Fitness Complex

Drop in anytime!

Regardless of age or ability, folks from 2 to 82 will love the range of fitness/wellness opportunities the Fitness Complex offers at fees affordable to all. A single use ranges from just \$1.25 to \$3 a day (discounted frequent user/annual passes available).

Fitness Complex facilities include:

The Body Joint: The ultimate workout room. Cardiovascular fitness machines like treadmills, stepers, upright and incline bicycles and body building/weight training equipment.

The Workout Connection: Dynamic group workouts! Cardiovascular, toning, stretching and relaxation classes including step, boxercise, aerobics, body sculpting and hand-weight oriented workouts.

The Sports Link: Two-court gymnasium and locker rooms. Drop in anytime to shoot some hoops or challenge a few buddies to a game of three-on-three.

For more information about the Fitness Complex and special programs call 990-7735.

That's not all! Turn the page for other Community Center programs and services.





Special Interest Classes: Special classes are offered for all ages and interests! From karate to computers, ceramics to topiary. Call 671-4428.

For Teens Only. A place where teens make it happen! Programs designed for teens by teens. Music, tournaments, excursions... Call 990-7734 to become part of the action.

Learning Playground and Children's Activity Rooms.

Young children will be eager to explore this area and make new friends! Call 990-7735.

Kid's Watch. Babysitting service for Center participants is available. You can play while we watch the kids! Open to all children (must be potty trained), \$1.50 per hour. Call 990-7735.

Youth and Family Services. Services to address the needs and concerns of today's families. Services include: parenting classes, counseling, tutoring, free youth employment service and information and referral. Funded in part by a grant from the Sisters of St. Joseph Healthcare Foundation. Call 990-7776.

Available for Rent. Planning a special event? Have it at the Community Center. This is the place for banquets, meetings, seminars, weddings, receptions, birthday parties. Reservations are now being taken. For information on rental rates and availability, call 990-7643.

Bistro 695

Stop by the Bistro for a quick and nutritious bite to eat or meet a friend for coffee after a class or workout. The Bistro offers a variety of beverages, snacks and meals.



Celebrate the Day Away...



**Brea Community Center
Opening**

Saturday, July 27, 1996

1-4 p.m.

Ribbon Cutting and Open House

6-9 p.m.

*Family Hoedown and
Brea Lions Club BBQ*

(Corner Madison Way & Randolph Ave.)

Free Family Fun!

For dinner tickets or more information about opening festivities, please call (714) 990-7735

Welcome to the Community Center!

Celebrate history-in-the-making July 27 at the opening of the Brea Community Center. The celebration includes Brea Hockey Club demonstrations and music by the KIIS FM Street Van.

Bistro 695 Cafe

- ★ Meet the Bistro 695 crew
- ★ Enjoy free taste treats

KidsWatch

Special low-cost baby-sitting service just for Center users.

- ★ Face painting and tattoos
- ★ Magic Show and Clown



Children's Activity Rooms

Home of Tiny Tots and more

- ★ Arts and Crafts for kids
- ★ Photos with McGruff and Sparky

Teen Room

Teens make it happen.

- ★ Compete in video arcade, ping-pong and foosball tournaments

Youth & Family Services

Services and programs developed to support youth and families.

- ★ Local service providers and information
- ★ Youth Employment Program

Arts Studio & Garden

Created for the artist in everyone.

- ★ Crafts including hair scrunchies and clay pendant
- ★ Watercolor and paper maché demonstrations

Community Hall

Elegant 5,000 sq.ft. space for Community uses.

- ★ Samples from local caterers
- ★ Bridal fashion show by Allusions

Fitness and Wellness Gymnasium

Two basketball courts designed for multi-sport play.

- ★ Teen Bash Championship
- ★ Indoor Soccer demo

Fitness Area

- ★ Cardiovascular equipment and free weights
- ★ Fitness, blood pressure testing

Exercise Room

- ★ Karate and aerobics, Step demos
- ★ Free passes



Remember...Wear Your Ribbon!

The Celebration Continues!

**Family Hoedown and
Brea Lions BBQ**

6 p.m.- 9 p.m.

Change into your western duds—if you like. Live music by The Cody Bryant Band, line-dance lessons, youth activities in the gym sponsored by Brea youth pastors, free family photos and free prize drawings.

Tickets: Families \$5; Individuals \$2; Kids & Seniors \$1

To buy dinner tickets or for more information about opening festivities, please call (714) 990-7735.

***Stop in anytime to see your new
Community Center!***

Brea Community Center Hours

Mon.-Thu. 6am - 10pm

Fri. 6am - midnight

Sat. 8am - 8pm; Sun. 10am - 6pm

City of Brea Community Services
1 Civic Center Circle
Brea, CA 92821

CITY OF BREA
U.S. POSTAGE
PAID
BREA, CA 92821
PERMIT NO. 56

Celebrate the Day Away...

FREE Family Fun!

**Brea Community Center Opening
Saturday, July 27, 1996**

**1-4 p.m. Ribbon Cutting and Open House
6-9 p.m. Family Hoedown and Brea Lions Club BBQ**

(Corner Madison Way & Randolph Ave.)

Ribbon Cutting and Open House 1-4 p.m.

Discover the Community Center...

- Official ceremonies and historic photo
- Ongoing demonstrations
- Music by the KIIS FM Street Van
- Bridal and evening wear fashion show by *Allusions*
- Wellness testing by Brea Community Hospital
- Face painting, tatoos, and arts & crafts
- Interactive aerobics and fitness demonstrations
- Taste-treats from local caterers including the Center's own Bistro 695
- Raffles, give-aways, food, fun and surprises!
- Norman Major Brass Quintet
- Hockey puck shooting contest sponsored by Brea Hockey Club

*Wear your Community Center ribbon
and come early so you don't miss a minute...*

Family Hoedown and Brea Lions Club BBQ 6-9 p.m.

Come back in the evening for food and entertainment...

- Live western music featuring *The Cody Bryant Band*
- Youth activities in the gym sponsored by Brea Youth Pastors
 - Foot-stomping good time!
 - Food, drink and prizes!
 - Line-dancing lessons

*Dinner tickets: \$5—family;
\$2—individual;
\$1—child and senior*

For dinner tickets or more information, please call... **714/990-7735**

The Community Center was funded by the Brea Redevelopment Agency

Celebrate the Day Away...

FREE Family Fun!

**Brea Community Center Opening
Saturday, July 27, 1996**

**1-4 p.m. Ribbon Cutting and Open House
6-9 p.m. Family Hoedown and Brea Lions Club BBQ**

(Corner Madison Way & Randolph Ave.)

Ribbon Cutting and Open House 1-4 p.m.

Discover the Community Center...

- Official ceremonies and historic photo
- Ongoing demonstrations
- Music by the KIIS FM Street Van
- Bridal and evening wear fashion show by *Allusions*
- Wellness testing by Brea Community Hospital
- Face painting, tatoos, and arts & crafts
- Interactive aerobics and fitness demonstrations
- Taste-treats from local caterers including the Center's own Bistro 695
- Raffles, give-aways, food, fun and surprises!
- Norman Major Brass Quintet
- Hockey puck shooting contest sponsored by Brea Hockey Club

*Wear your Community Center ribbon
and come early so you don't miss a minute...*

Family Hoedown and Brea Lions Club BBQ 6-9 p.m.

Come back in the evening for food and entertainment...

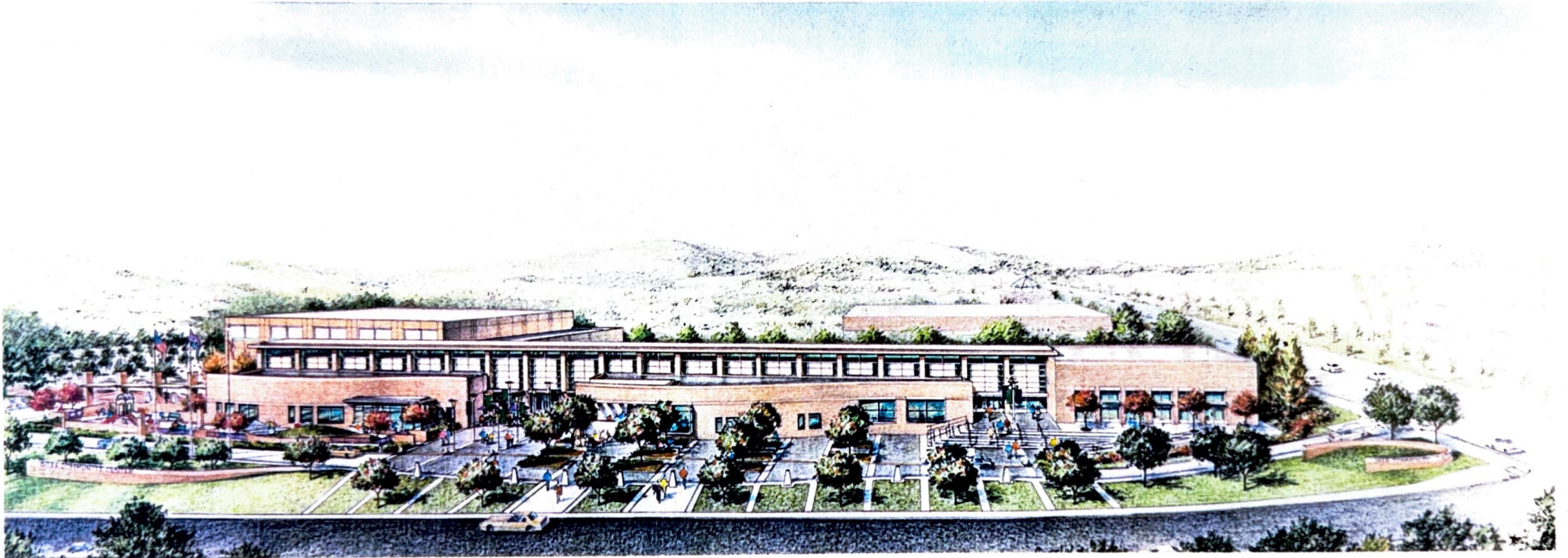
- Live western music featuring *The Cody Bryant Band*
- Youth activities in the gym sponsored by Brea Youth Pastors
 - Foot-stomping good time!
 - Food, drink and prizes!
 - Line-dancing lessons

*Dinner tickets: \$5—family;
\$2—individual;
\$1—child and senior*

For dinner tickets or more information, please call... **714/990-7735**

The Community Center was funded by the Brea Redevelopment Agency

BREA COMMUNITY CENTER



Open to all ages throughout the year, the Community Center will be a focal point for the people of Brea... A place to:

- *Play*
- *Learn*
- *Socialize*
- *Create*
- *Seek Help*
- *Relax*
- *Celebrate*

Birch St.

Brea Community Center

Brea Post Office

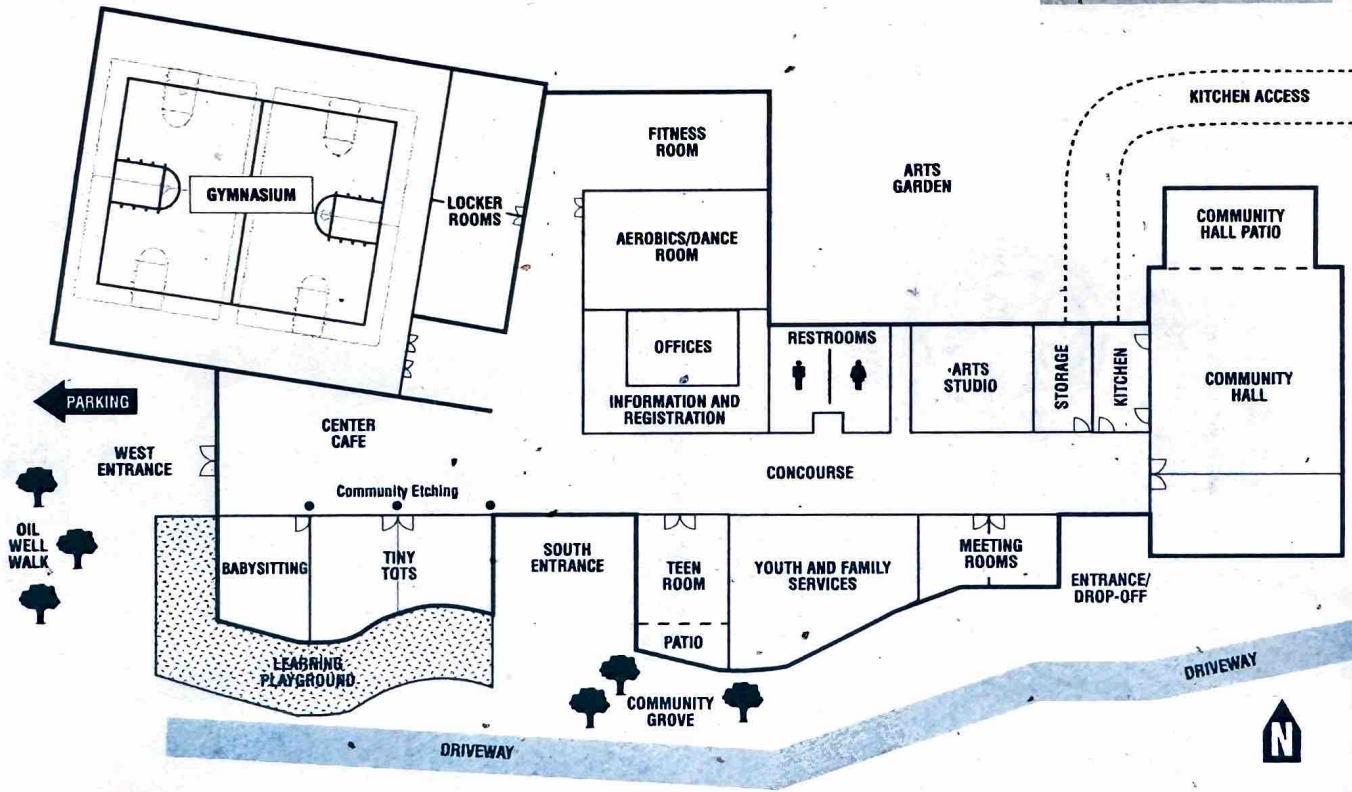
Brea Civic & Cultural Center

Brea Blvd.

Poplar St.

Randolph Ave.

Brea Mall



Madison Way

Imperial Hwy.

BREA COMMUNITY CENTER

The Perfect *Fit* for Your Family



Opening this summer, the Brea Community Center will be the place for families to create, learn, socialize, seek help, relax and celebrate! This beautiful, state-of-the-art facility will offer an exciting variety of activities for every member of your family. From sports, crafts and special events for kids, teens and young adults to the latest fitness programs, special classes and programs for moms, dads and grandparents, the Center will have it all!

The Community Center is where families fit perfectly!

And, it gets even better! Want to workout but need a sitter? Our low-cost babysitting service makes coming to the Center worry-free and convenient. Is your teenager looking for a job or your junior high school student in need of help with homework after school? Send them to the Center! We also offer a Youth and Family Services Program to help you and your family deal with today's challenges.

Ways Your Family Fits...

- Open gym and fitness programs for all ages and abilities:
 - Sports programs, classes, leagues
 - Cardiovascular/aerobics workouts
 - State-of-the-art work-out equipment
 - QuikFit programs for busy lifestyles
 - Speed circuit
 - Fitness classes for new moms
 - Dance, yoga and self defense classes
 - Parent & me classes
- Adult basketball/volleyball leagues and tournaments
- "Just-for-Teens" area
- Youth and Family Services
 - Youth Employment Service
 - Counselling services
- Instructional youth sports programs
- Babysitting services on-site
- Tiny Tot learning playground
- Free after-school program for youth
- Music/computer/seminars/parenting classes
- Facilities for weddings, receptions, reunions, birthday and anniversary celebrations
- Center Cafe (healthy snacks and lite meals)

Affordable for All!

Using the Gymnasium and Fitness Center is affordable for all. A variety of fee options are available to fit every pocketbook and lifestyle. Other fee-based leisure classes and programs are also offered at the Center (scholarships available for those who qualify).

To find out more about the Brea Community Center, call (714) 990-7735

Hours: Monday - Thursday 6 a.m.-10 p.m., Friday 6 a.m.-midnight, Saturday 8 a.m.-8 p.m. & Sunday, 10 a.m.-6 p.m.

BREA COMMUNITY CENTER

◆◆◆ Facilities ◆◆◆

This 51,000 square foot, state of the art facility will be open and accessible to all ages and interest groups, as well as to the business community. The Center will be open from 6 a.m.-10 p.m., Monday through Friday; from 10 a.m.-8 p.m. on Saturday; and from 12 p.m.-5 p.m. on Sunday. The Center, located at Madison Way and Randolph Avenue, will be open for special events and is the perfect place for weddings, banquets, receptions, and private meetings. An expansive plaza provides space for outdoor events, while a 300 foot long concourse connects a multitude of programs all under one roof. The concourse's glass wall, transparent by day and lantern-like by night, provides a warm invitation to the neighborhood. A pedestrian drop-off area and ample free parking, with 254 spaces, add to the building's convenience.

Community Hall

This elegant 5,800 square foot reception space features a hardwood floor, access to an enclosed patio with trellis covering, and coffered ceilings with lighting, making it the ultimate location for a holiday banquet, retirement party, anniversary celebration, wedding reception or class reunion.

- ◆ May be divided for smaller receptions or meetings
- ◆ Private 2,650 square foot landscaped patio
- ◆ Catering kitchen with loading area accommodates the most basic to elegant food service
- ◆ Tables, chairs, portable bar and portable stage
- ◆ Seating for 340 for banquets/receptions and 750 maximum capacity theatre style

Meeting Rooms



Two rooms, 500 square feet each, are designed for business meetings, small seminars, training classes and breakout spaces for large seminars held in the Community Hall.

- ◆ Accommodates 40 people in theatre style seating or 25-30 for classroom seating
- ◆ Wall mounted marker/boards
- ◆ A/V equipment available
- ◆ Windows looking out to the plaza

Arts Studio and Art Garden



A 1,530 square foot studio that opens onto a private 6,600 square foot landscaped Art Garden is the ideal location for a wedding ceremony, outdoor reception, or private party.

- ◆ Ceiling to floor windows look out onto the Art Garden
- ◆ Demo table with mirror, 13 craft tables, stools, chairs and sink
- ◆ Classroom-style seating for 32 ◆ Art Garden occupancy 210

(over)

Gymnasium



The gym accommodates a variety of sports including basketball, volleyball, indoor hockey and soccer, as well as dances and theme parties. It's also a great location for card or craft shows.

- ◆ 11,236 square foot gym
- ◆ Two full court basketball courts
- ◆ Bleacher seating for 360
- ◆ Volleyball courts

Fitness Area

The fitness area includes facilities and equipment necessary for strength training, cardiovascular fitness, specialized wellness programs, martial arts, exercise, and dance classes for all ages.

- ◆ Aerobic/dance studio with 1,800 square foot cushioned hardwood floor, mirrored walls, and ballet bar
- ◆ Wireless mic stereo system and platform
- ◆ Fitness room with training equipment
- ◆ Cardiovascular equipment
- ◆ Shower and locker facilities for men and women

Tiny Tots Area



A 900 square foot play and learn room is an ideal location for children's birthday parties or as a children's play area in conjunction with private rental of the Community Hall.

- ◆ Linoleum floors with rollout carpet section
- ◆ Unique learning playground
- ◆ 7500 square foot outdoor playground
- ◆ Room occupancy 35
- ◆ Picnic tables and play equipment
- ◆ Private kid-size restrooms

Youth and Family Services Area

This 2,500 square foot wing houses a variety of services for youth and families.

- ◆ Board room accommodating meetings of up to 10 people
- ◆ Two small meeting rooms accommodating 4-6 people
- ◆ Counseling offices
- ◆ Comfortable reception area, office support, equipment, and work room

Teen Room

This area will be the focal point for a host of activities planned by and for teens. It is conveniently located adjacent to the Youth Employment Service and Youth and Family Services.

- ◆ 868 square feet
- ◆ Private enclosed patio
- ◆ 45" television and VCR
- ◆ Sound system
- ◆ Ping pong/pool table

Center Café



- ◆ Serving quick, nutritious snacks and light meals
- ◆ Seats 50
- ◆ Windows offer view of gymnasium play

BREA COMMUNITY CENTER

◆◆◆ Programs ◆◆◆

When you come through the doors of the Brea Community Center, we want you to know you're just the person we want to see! Inside you'll find a facility designed for use by all. Here is a place you can come to relax, work-out, learn a new skill, attend business meetings, seminars, celebrations, or enjoy special community events with your neighbors and friends. You can also experience the arts, attend workshops, seek help for yourself or a loved one, watch your children learn new skills, and play competitive sports. This is a place for you!

Our goal is to make it easy for you to enjoy your Community Center. Need a babysitter for your kids? No problem; bring them along. While you're working out, attending a workshop, or visiting with friends at the Café, they can play in our state-of-the-art child care and babysitting area. Your kids will love coming to the Community Center too! They can learn to shoot hoops, create works of art in a craft class, dance like a ballerina, or fine-tune their karate moves. There will even be a free "Kids Count Club" every weekday after-school to give kids a place to get help with homework, socialize with friends, and play games in a safe, supervised environment.

The Door's Always Open (well, almost)

For your convenience, the Community Center will be open Monday through Thursday from 6 a.m.-10 p.m., Fridays from 6 a.m. 12 a.m., Saturdays from 8 a.m.-8 p.m. and on Sundays from 10-6 p.m. And that's not all. The Center will be open additional hours for special events and for private rentals by businesses, organizations and individuals.

Toddlers - Youth Programs & Activities



- ◆ Tiny Tots classes
- ◆ Sports programs like Tiny Tots baseball, volleyball, basketball, roller hockey and indoor soccer
- ◆ Brea "Kids Count Club" free after school program
- ◆ Special classes like Music & Motion, Pre-School Picasso, and Bugs & Buddies

Teen Programs & Activities



- ◆ Teen Lounge equipped with ping pong/pool table, computers and sound system
- ◆ Youth Employment Service
- ◆ Theme dances and concerts
- ◆ Fine arts, crafts, dance and fitness classes
- ◆ Sports leagues, tournaments, clinics and roller hockey
- ◆ Karaoke
- ◆ Excursions

(over)

Adults Programs & Activities



- ◆ Drop-in gym and fitness hours
- ◆ Sports leagues & tournaments
- ◆ Circuit training and aerobics classes
- ◆ Customized fitness training and wellness programs
- ◆ Classes for every interest including cooking, Tai Chi, Polynesian dance, tapercize, and pre-natal aerobics
- ◆ Fine arts, crafts, and home improvement classes
- ◆ Cultural arts celebrations

Youth & Family Services



- ◆ Parenting classes
- ◆ Counseling

- ◆ Educational tutoring
- ◆ Information/referral



Business Services



- ◆ Facilities available for meetings, training seminars, conferences, trade shows, receptions and parties
- ◆ Fitness and wellness programs for employees
- ◆ Noontime "Quick Fit" programs

Other Services



- ◆ Center Café with a great selection of nutritious snacks and light meals
- ◆ Banquet, wedding, birthday party, conference and meeting facilities for rent
- ◆ Babysitting service for parents using the Center's facilities (ages 2 & older)

BREA COMMUNITY CENTER

◆◆◆ History in the Making ◆◆◆

The people of Brea have long held a dream for a place where the community can come gather, to play, to learn, to socialize, to seek help, counseling and guidance, to celebrate and recreate.

As early as 1976...

the Parks, Recreation and Human Services Commission recognized this desire and included it in the City's Parks and Recreation Master Plan. When this plan was updated in 1986, one of the major goals was to design and build a Community Center.

In 1988...

the City Council appointed a Citizens' Task Force to explore the feasibility of building a Community Center. This committee studied numerous sites, the potential impact on traffic and neighborhoods, community needs and estimated costs to build such a facility. Later, this Task Force grew into a Community Center Committee made up of an Outreach Team and a Design Team. This committee conducted an extensive written survey which identified components to be included in the design.

The need for a Community Center was also addressed by the Brea Project, a dynamic citizen-based long-range planning group. A survey conducted by this group confirmed community support for the construction of a Community Center.

In 1990...

a Design Team was formed by the City Council to develop the program and design the facility. This team included professionals, citizens from the community a building architect and a landscape architect. The Team visited over 20 community centers in Southern California to aid them in creating a state-of-the-art facility to meet the ever growing and changing needs of the community.

In August of 1993...

the City Council approved the construction of a 51,000 square foot facility created and designed by the community for maximum flexibility and multiple use.

February, 1995...

marked the start of construction for the Community Center.

December, 1995...

construction passed the halfway point and is on schedule for opening in the summer of 1996.

BREA COMMUNITY CENTER

◆◆◆ For the People of Brea Today and Tomorrow ◆◆◆

When the doors open, the Community Center will serve as a focal point for the people of Brea to come together to play, learn, socialize, seek help, relax and celebrate.

For many years, a Community Center for Brea was just a dream. A dream shared by many. Over the years, the dream was cultivated and passed on to others to help it become a reality. Though there were many hurdles and delays along the way, the dream was not allowed to die and today a Community Center for Brea is becoming a reality.

The City of Brea would like to thank the following people who shared "the dream" and were instrumental in making it happen.

Brea City Council and Brea Redevelopment Agency Members

Mayor Burnie Dunlap

Mayor Pro Tem Glenn Parker

Councilmember Bev Perry

Councilmember Lynn Daucher

Councilmember Kathy Wisner

Parks, Recreation and Human Service Commission Members

Bob Bickel • Mike Carre • Pat Fox • Tim Harvey • Rick Morrow

Design Committee

Delaina Hofacre • Bob Munro • Claire Schlotterbeck • Bob Wettlin

Special Thanks

The following generous donors have purchased a Plaza Grove Tree (\$2,500 and up) to support the After School Program:

Brea Veterans • Embassy Suites

Kirkhill Rubber • Taormina Industries

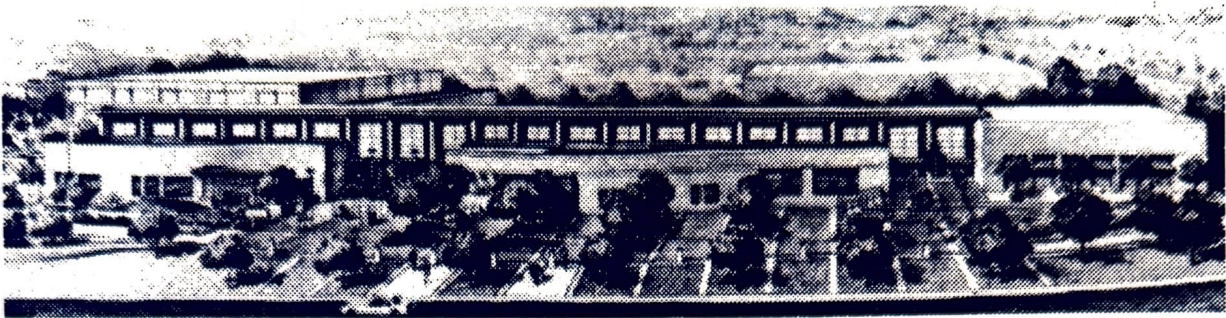
Brea Mall • United Ad Label

Wells Fargo Bank • American Suzuki Motor Corporation

◆ ◆ ◆
Architect
LPA, Inc.

General Contractor
CAL-PAC Construction

BREA COMMUNITY CENTER



The Brea Community Center is funded by the City of Brea and the Brea Redevelopment Agency

The budget for this public project budget is: \$9,400,000

Project components:

Design	\$1,116,000.
Construction	6,668,000.
Building	
Site development	
Contingency	486,000.
Construction Administration	500,000.
Furnitures and Fixtures	600,000.

- Community Center land is owned "free and clear." Property was purchased by the Brea Redevelopment Agency.
- General tax revenues will not be used for construction of the facility.
- Continuing budget reviews and cost control strategies will ensure the Community Center stays within budget during construction.
- Project benefits all ages and interests groups within Brea.

BREA COMMUNITY CENTER

◆◆◆ Community Profile ◆◆◆

Brea's The Place To Live, Play and Work...

Located in the northeast corner of Orange County, Brea is a family-oriented community of 34,500 residents. Blue-ribbon schools, strong youth and community programs, excellent public safety services and the flavor of small-town living combine to make Brea an outstanding place to live for residents of all ages.

1995 Total Population: 35,100

- Male...49.7% • Female...50.3%

Population By Age

0-5 Years Old ... 7.9%
6-17 Years Old ... 15.3%
18-24 Years Old ... 10.9%
25-34 Years Old ... 18.7%

35-44 Years Old ... 17.2%
45-54 Years Old ... 12%
55-64 Years Old ... 8.7%

65-74 Years Old ... 5.9%
75-84 Years Old ... 2.7%
85+ Years Old ... 0.7%

Housing Values

Ranges: ... \$170,000-\$500,000
Rents: ... \$400-\$1,000+/Mo.

Median: ...\$264,000
Median Rent: ...\$700/Mo.

This data is based on 1990 census

Distinctive neighborhoods abound through-out the city, from charming bungalows built in the 1920's to brand new tract homes. Condominiums, apartment complexes and gated communities are also sprinkled throughout the community. A number of apartment complexes cater exclusively to Senior Citizens. Brea takes great pride in it's commitment to ensuring quality housing opportunities for all. Affordable, median and upper income housing is available.

Ethnic Groups

White ... 87%
Asian ... 6.2%

Black ... 1.1%
Indian ... 0.4%

Hispanic^o ... 15.40%
Other ... 5.3%

^o *Hispanic could be of any race*

Brea is an attractive, well-maintained and aesthetically pleasing city. The city became one of the first in the county to implement trash recycling when it adopted an automated curbside collection system for recyclables in 1989. A tough anti-graffiti ordinance and a Graffiti Hotline have kept Brea free from this problem that plagues many other cities.

Outstanding Educational Opportunities...

School Age Population: 8,975

- Pre-Primary School ... 760
- Elementary/High School Students ... 6,162
- College Students ... 3,068

Brea's public schools consistently score at the highest levels in state and national achievement tests. A new high school opened in 1990 and features state of the art technology, a professional performing arts center and complete athletic facilities. Brea Olinda High School is also well-known as the home of the Ladycats, the 1992, 1993 & 1994 National Championship girls basketball team. Brea is also home to a number of outstanding private schools.

Brea's The Place To Work...

Over 60,000 people a day work in Brea. In addition to being a major retail center, Brea is home to many large corporations, such as UNOCAL, American Suzuki, Lucas-Western Aerospace, Beckman Instruments and Bank of America.

Daytime Working Population

65,000

Daytime Total Population

100,000

Business and Industrial Make-Up (Approximate)

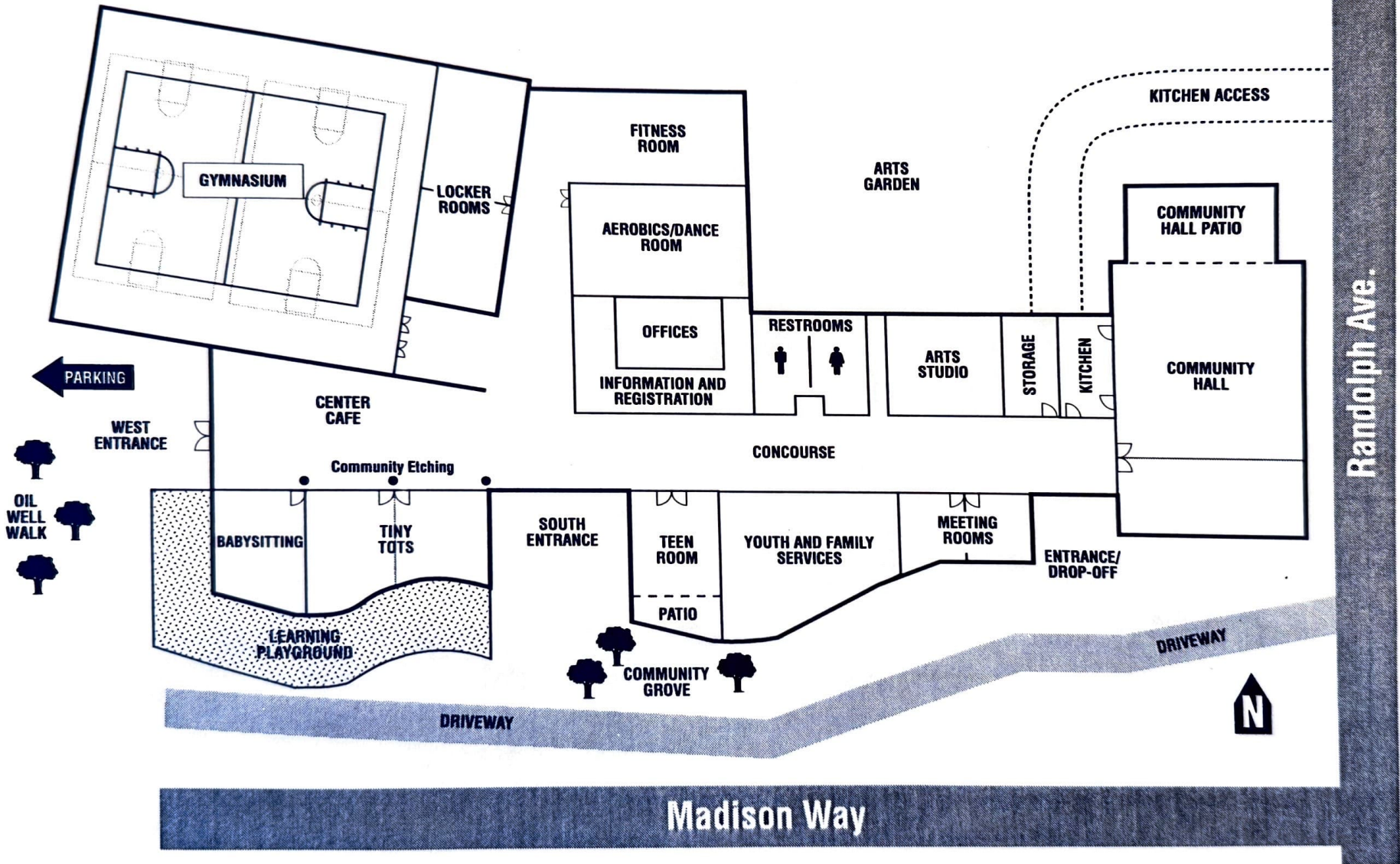
Retail/Service Business ... 50%

Manufacturing/Industry ... 25%

Professional ... 12.5%

Real Estate/Finance/Banking ... 12.5%

Brea Community Center Floor Plan



BREA
Community
CENTER
WELCOME!

BREA
Community
CENTER
WELCOME!

BREA
Community
CENTER
WELCOME!



Brea Community Center

Grand Opening - Saturday, July 27, 1996

Celebrate the Day Away!

**The Brea City Council
Invites You To**

**See It...
Feel It...
Use It!**

**Brea Community Center
Opening Celebration**

Saturday, July 27, 1996

Ribbon Cutting & Open House

1p.m. - 4p.m.

**Demonstrations, activities and
fun for the entire family**

**Country Western BBQ
& Family Hoedown**

6p.m. - 9p.m.

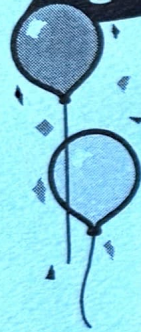
Music & family fun

(BBQ sponsored by the Brea Lions Club)

**695 Madison Way
(Corner of Randolph Avenue
& Madison Way)**

**To purchase dinner tickets or for more
information call 990-7735**

City of Brea
Civic & Cultural Center
1 Civic Center Circle
Brea, CA 92821



Celebrate the Day Away...
FREE Family Fun!

Brea Community Center Opening
Saturday, July 27, 1996
(Corner Madison Way & Randolph Ave.)

1-4 p.m. Ribbon Cutting and Open House
Demonstrations, activities and give-aways for the whole family.

6-9 p.m. Family Hoedown and Brea Lions Club BBQ
Live western music, dancing, food and prizes!

For dinner tickets or more information, please call... **714/990-7735**

*Wear your Community Center ribbon
and come early so you don't miss a minute...*

*Dinner tickets: \$5—family;
\$2—individual;
\$1—child and senior*



Celebrate the Day Away...
FREE Family Fun!

Brea Community Center Opening
Saturday, July 27, 1996
(Corner Madison Way & Randolph Ave.)

1-4 p.m. Ribbon Cutting and Open House
Demonstrations, activities and give-aways for the whole family.

6-9 p.m. Family Hoedown and Brea Lions Club BBQ
Live western music, dancing, food and prizes!

For dinner tickets or more information, please call... **714/990-7735**

*Wear your Community Center ribbon
and come early so you don't miss a minute...*

*Dinner tickets: \$5—family;
\$2—individual;
\$1—child and senior*