

# BreaLine



March-April 2003

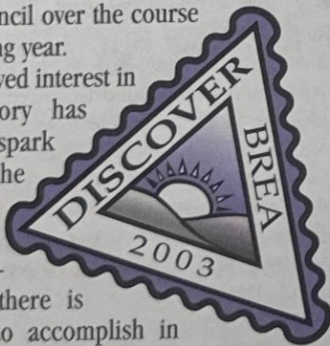
## Mayor Wants You To "Discover Brea"

Discovery is a wonderful sensation that motivates people to continuously learn about and appreciate the world. This is the concept behind the Mayor's theme for 2003, "Discover Brea." This year's logo is reminiscent of a passport stamp, implying the City is on a journey of sorts.

In Brea, many new citizens are moving to town as neighborhoods expand. A newcomer may live next door to someone who grew up here. Each may have a very different perception of the town. Each can give the other new insight and collectively their experiences should make this a better place for both.

Nostalgia for the past can conflict with excitement for the future. Sometimes this results in confusion. Citizens are encouraged to share discovery of the many positive initiatives currently underway here. Outstanding contributions will be recognized by the City Council over the course of the coming year.

A renewed interest in Brea's history has helped to spark pride in the many assets the City currently provides. But there is still more to accomplish in the years ahead. Those with a healthy sense of adventure are invited to come along and "Discover Brea" with a sense of caring and innovation.



## Discover the Arts: A Valuable Community Asset

It was an innocent notion that grew into a sophisticated collection of public art pieces. It was a fleeting inspiration that led to staging a run of shows reflecting diverse performing arts. Brea, described as "city of art," couldn't have entered the imagination of the early oil workers who founded this town. Today it is very easy to discover the arts all over town.

The public enjoys outdoor sculpture at every turn in the nationally acclaimed "Art in Public Places" program. These can provoke compliments or spark debate. Either way, this collection of over 135 pieces is a valuable community asset presented at no cost to residents. Each piece has been selected and purchased by property owners who built any major new project here over the last few decades.

Live theatre, reflecting the full range of human emotion—drama, comedy and song—is at home in Brea's Curtis Theatre. The performance quality far surpasses the affordable ticket prices. Theatre lovers can get involved and be part of the magic in a specialty volunteer program that puts talent to work both onstage and behind the scenes. For more information about volunteering, call 990-7727.

The Brea Gallery has exhibited artwork from classic oil paintings to cutting-edge assemblage over the years. It provides a setting for a personal connection to various art forms. The Gallery also takes its mission of arts education seriously with ongoing adult and children's workshops presented in conjunction with exhibits. Plus, Gallery volunteers conduct outreach to students through private tours and annual events such as "Arty Party" and "Gotta Have Art."

It's easy to discover art in various forms around Brea. Look at what's coming up next at the Curtis Theatre and Brea Gallery on page 20 of this issue of *Brea Line*.

**Important Updates  
on City Budget  
page 2-4**

## Budget Challenges Bring Major Organizational Assessment To Brea

If the State budget as proposed by Governor Davis is passed, the City of Brea's General Fund will face a \$1.4 million deficit this coming fiscal year. By fiscal year 2006-2007 the deficit could grow to more than \$5 million if no actions are taken to balance expenditures with revenues.

However, Brea has already acted to cut General Fund

spending and balance the budget for the current fiscal year. Still, the downturn in the economy post September 11th and widespread lack of investor and consumer confidence continues to negatively affect city revenues. Brea, like other California cities, also has recently been notified of unexpected increases in PERS retirement rates coupled with projections of lower than expected sales tax revenue.

Additionally, the State of California is facing very serious budget problems. As in the past, the State is once again looking to cities to help close their budget deficit. It is highly unlikely that the State Budget, as is, will make it through the legislature. Invariably, the governor's proposed budget is heavily modified before it is adopted, usually following weeks and months of partisan maneuvering. Already cities and other entities have begun lobbying efforts and have initiated community and media public information campaigns.

So far, we have been talking about potential impacts on Brea's General Fund budget. The Governor's proposed budget would also dramatically affect the Brea Redevelopment Agency, as the State threatens to take funds from redevelopment agencies that are intended for use in a variety of local programs and services. In Brea, the loss is expected to be \$8 million over the next 18 months and increase in future years. This loss in revenue would greatly impact the Agency's affordable housing, rehabilitation and senior programs, Capital Improvement Projects (CIP), including street improvements, as well as economic development programs designed to support current business and attract new firms to the City.

Brea will remain financially prudent in approaching budget matters as is our practice. A budget team is well into departmental reviews; a hiring slowdown has been instituted and a committee of employees from each department (B.E.S.T.—Budget Evaluation Strategy Team) has been meeting to examine overall organizational restructuring and identify all budget saving opportunities. Additional "stop-gap" measures being considered to preserve current and future resources include:

- Hiring freeze
- Delay General Fund capital projects
- Delay planned major purchases
- Pursue new entrepreneurial contracts

Difficult decisions are ahead. Service cuts are likely and there is no way to sidestep this. Such decisions require consideration of Council priorities, staff analysis and input that has been received from citizens over the past month through the City website and other outreach through community groups.

We will continue to closely track our current budget and analyze future developments at the State level. Our communication plan includes making any new information available through various City media resources, most particularly with updates on the website.



Shoppers are always very welcome in Brea. They bring sales tax which the State shares with cities where it originates.

## Budget Primer

**General Fund Budget**—Typically, when we talk about Brea's budget, we are referring to the General Fund. Similar to your family checkbook—money comes in (revenues) and money goes out (expenditures). The General Fund is the primary operating fund for the City. The cost of general operations such as Police, Fire, Maintenance, Community Services and Administration are paid for out of this fund. City Council policy dictates that expenditures may not exceed revenues. In other words, Brea's budget must be balanced.

**General Fund Reserves**—The General Fund Reserve is the City's contingency or "savings account," earmarked specifically for emergencies, such as natural disasters, civil unrest, economic variations or acts of terrorism. City Council policy dictates that the Reserve Account must equal at least 8 to 10 % of the General Fund expenditures.

**Enterprise Funds**—These funds finance operations in a manner similar to private enterprise, where costs of providing goods and services are covered through user charges. Brea has five Enterprise Funds: Water Utility, Sewer Utility, Sanitation and Street Sweeping, MDS/Public Safety and external Information Technology Services. Enterprise funds cannot be used to close General Fund's budget deficit.

**Special Revenue Funds**—These are revenues from a variety of specific sources and may be used only for these specific purposes. Some examples of Special Revenue Funds are: Measure M Transportation Taxes, Gas Tax, and Park Development.

**Capital Improvement Program (CIP)**—This is a financial plan of proposed capital improvement projects including single and multiple-year capital expenditures. Brea's CIP plan includes seven-year projections and is updated annually. CIP projects typically consist of construction and renovations of community facilities, streets, water delivery systems, storm drains and sewers. Revenues come from a variety of special funds, including the General Fund. Development Services is taking a look at which CIP projects, if any, could be deferred in light of the budget difficulties. Some projects having matching funds from outside agencies and/or deadlines requiring that we proceed with the project, would not be deferred.

**Redevelopment Agency**—These funds help finance economic development and housing projects within the City. The primary source of revenue is from new property taxes (tax increment) collected from commercial developments in defined redevelopment areas within Brea. Use of these funds is limited to a specific purpose and Agency funds cannot be used to support General Fund obligations.

## Budget FAQs

### What is the biggest source of city revenue?

At 40 percent of the General Fund, sales tax is by far our biggest source of revenue. Currently sales tax revenue is lower than expected and the downward trend is projected to last at least through the fiscal year. It's worth noting that the retail and restaurant sector of the sales tax revenue continues to grow slightly. However, the business-to-business sector (manufacturing, heavy and light industry), declined following September 11 and has not yet recovered. Property tax at 12 percent is next and Revenue from Vehicle Licensing Fees (VLF) at approximately 6 percent is third.

Part of the Governor's proposal is to take VLF from cities to help the state solve its deficit. California cities, as well as police and fire associations vehemently oppose this part of the proposal, as it would greatly reduce cities' ability to provide important city services.

### How is the Redevelopment Agency funded? Is it facing the same cutbacks as the city?

In addition to city revenue, Governor Davis has proposed taking money from California redevelopment agencies to help balance the state budget. If the governor's proposal goes through as submitted with no changes, Brea's Redevelopment Agency stands to lose \$8 million by the end of 2003-2004. This proposal would eliminate or significantly reduce our ability to provide many programs including various affordable housing programs, homebuyer assistance, senior subsidy, rental rehabilitation and economic development activities.

Redevelopment funds are separate from the General Fund. They are generated from new property taxes (tax increment) received in a defined project area after adoption of a Redevelopment Plan. State law requires that the Redevelopment Agency maintain debt in order to continue receiving the tax increment. The debt is in the form of tax-exempt bonds, which the Agency is responsible for repaying from the tax increment received. Neither the City nor the residents are responsible for this repayment. Proceeds from the bonds are the major funding source to undertake projects such as the Brea Community Center, the Downtown, the new Fire Station and indeed most of the public facilities that contribute to Brea's quality of life.

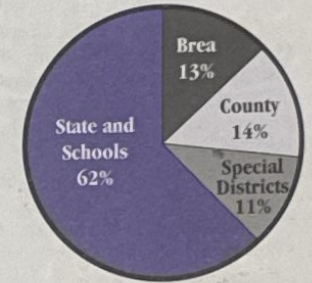
### Can we use these Redevelopment Funds to help the General Fund deficit?

No. Redevelopment funds must only be used within the project area for purposes stated in the Redevelopment Agency's Five Year Plan. Restrictions on these funds serve the purpose of keeping the economic and housing base strong. They are not for addressing ongoing City operations.

The concept is to apply these funds to improve the conditions within project areas. Reinvesting, the City benefits by receiving additional sales tax, improved infrastructure facilities and upgraded housing—all paid for by the Agency. In the past, Brea has used these funds to build the Civic and Cultural Center, Community Center, Fire Stations 2 and 3,

and has facilitated the development of the Brea Mall and Brea Downtown. In addition, the funds were used for assisting affordable housing in developments such as the Arbors, City Walk, Laurel Walk, Ash Street Cottages, Birch View condominiums, and rehabilitation of the Civic Center Apartments, Birch Terrace Apartments and South Walnut Apartments.

### Your Property Tax Dollar: How much returns to the City of Brea

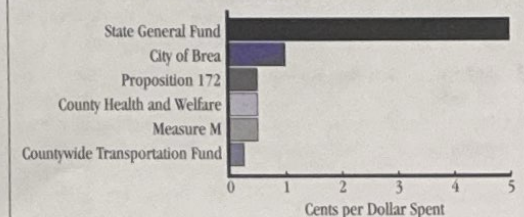


### Why is the Brea Redevelopment Agency spending \$1.9 million in improvements for the Downtown and loaning \$650,000 to the Improv when the city is facing budget cuts?

These non-general fund expenditures enhance Brea's long-term financial security. Again, these projects are paid for through Redevelopment funds, which are legally separated from City general funds much like traffic impact fees, water fund or other non-discretionary funds that have legal restrictions on uses. Funds earmarked for these projects cannot legally be used to solve the General Fund deficit. Additionally, redevelopment funds that are not committed to a project are subject to elimination in the State budget proposed by Governor Davis.

The addition of the Improv and the Downtown Enhancements are important to maintain Brea's position in the region and to bring additional economic benefit to the City of Brea without using City General Fund money. Here's how it works using the Improv as an example. The Improv signed a 12-year lease to bring live entertainment to the Downtown and provide taxable sales on dining and add shoppers to the Downtown. The club is expected to generate 130,000 to 156,000 new patron visits annually. The Improv loan of \$650,500 is estimated to return \$1,250,000 to the Redevelopment Agency over its term. The City of Brea General Fund is expected to receive over \$22,000 per year in new sales tax revenue.

### Here is where the sales tax goes for each taxable dollar spent in Brea



## Counting Brea's Redevelopment Dividends

How are you enjoying your Brea Dividends? Do activities draw you to the Community Center or downtown restaurants and shows? Are you looking forward to having a new Fire Station, Heritage Museum or perhaps eager to use the new Sports Park?

These facilities are work of The Brea Redevelopment Agency, which has proven to be a valuable economic tool for Brea. Recently a Five-Year-Implementation Plan was reviewed at its midpoint and an impressive list of accomplishments to date was put into perspective.

Redevelopment financing is approved by the City Council acting as the Redevelopment Agency. This is based on state law, which allows cities to form agencies and create project areas within which new tax dollars generated are specifically targeted to future improvements for that area.

Here is how redevelopment money is used in three key ways:

**1. Revitalization**—In addition to continuing to create a lively downtown, many other community enhancements also have been funded with redevelopment proceeds, which are very restrictive in how they can be applied. The past three years have seen financing for the new Fire Station now under construction and the upcoming Brea History Museum at City Hall Park. A loan was made to the Brea Improv to open a new comedy club in the downtown with a full stage and top notch live entertainment, and the Agency assisted in the purchase of land for a long awaited Sports Park that will help meet recreational needs. In order to maintain and enhance the downtown walking experience and to encourage new and return shoppers, the Agency awarded a bid to add many new safety features and amenities.

**2. Provide Affordable Housing**—The provision of affordable housing for Brea's residents and workforce is key to maintaining community vitality. In Brea, the provision of affordable housing is accomplished through the use of redevelopment housing funds, federal Community Development Block Grant funds, and the City's Affordable Housing Ordinance which requires all new residential developments over 20 units to provide 10% as affordable housing. Over the past three years, 280 households have been assisted through the development of new homes, renovated apartments, senior rental subsidies and homebuyer assistance loans.

**3. Assure a Healthy Business Environment**—Brea is the business hub for northern Orange County. As such, the Agency takes a lead role in establishing alliances with neighboring cities to monitor industry trends, attract and retain successful enterprises, and support a quality labor pool through its Economic Development Department. Together, in the North Orange County Partner-

ship, work is done in conjunction with chambers of commerce and educational institutions. The overall goal is to promote a positive economic environment for the entire region as all cities will benefit. This is important to sustain a healthy tax base that allows for quality services that citizens have come to expect.

The City's Economic Development Department is responsible to execute the community's vision for the Redevelopment Agency. Their review of the past three years of redevelopment activity provides a glimpse into a specific funding source that Brea has used to support and enhance community vitality. In the past, redevelopment dividends have also included construction of the Civic and Cultural Center, the Brea Mall, Embassy Suites Hotel, Brea Marketplace, and Brea Olinda High School. Restrictions on funds keep the focus on business development, affordable housing, and maintaining a strong economic foundation for years to come. Brea has long been seen as an innovator in keeping its local economy strong. This will continue through constructive use of redevelopment dividends.



New crosswalk amenities and decorative treatments will make the downtown walking experience safer and more enjoyable.

## Brea Downtown Shaping Up for 2003 Summer!

Brea Downtown will have a fresh new look! Downtown enhancements, recently approved by the City Council, will improve pedestrian safety with colored crosswalks and railings at the intersection of Brea Boulevard and Birch Street. Other features, including newly landscaped medians, benches, mature trees, and decorative lights, will be added to complement the Downtown's outdoor urban experience.

Contractors will do everything possible to minimize inconvenience to shoppers and businesses as work begins March 2003 and until it concludes early Summer 2003. During this time, the intersection at Brea Boulevard and Birch Street will experience traffic delays. Your favorite Downtown restaurants and shops will be open throughout the construction period, so be sure to visit!

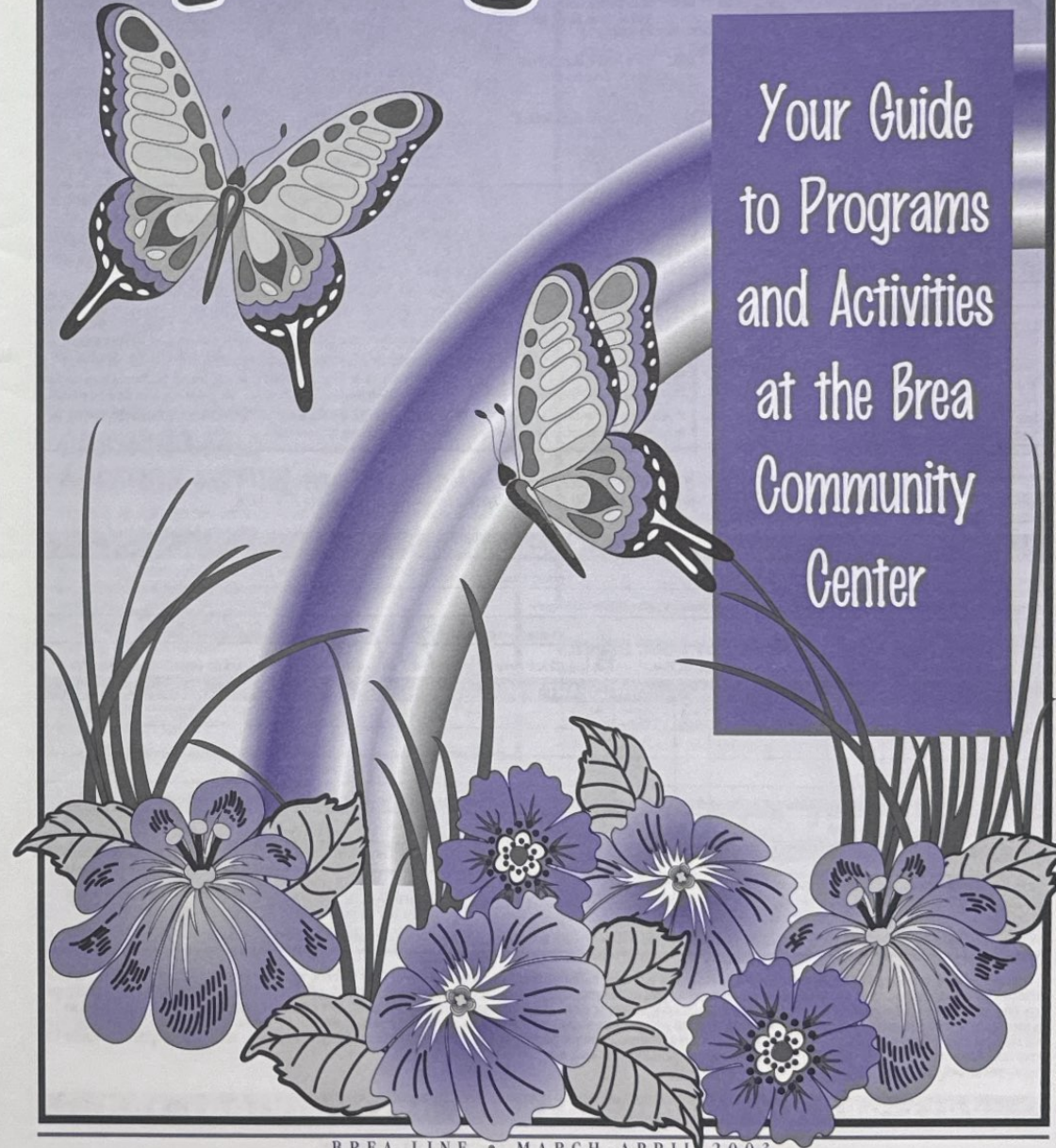
Thank you in advance for your patience. We know you will agree that all the improvements are worth the wait. Updated information will be posted on the city's website at [cityofbrea.net](http://cityofbrea.net). Have a question about the project? Call the Downtown Street Improvement Info Line at (714) 671-4410.

This project is entirely funded by the Brea Redevelopment Agency.

City of Brea Community Services Department

# Spring 2003

Your Guide  
to Programs  
and Activities  
at the Brea  
Community  
Center



# Registration and Information

## Three Easy Ways to Register

- Phone-In**  
Call the Brea Community Center at **990-7100** and your information will be taken over the phone. Have a major credit card number handy.
- Walk-In**  
Come by the Community Center, 695 E. Madison Way, Brea Monday-Friday, 6am-10pm; Saturday 7am-8pm; Sunday 8am-5pm
- Mail-In**  
Mail your complete registration form and payment to:  
City of Brea Community Services,  
1 Civic Center Circle, Brea, CA 92821  
Attn: Community Center Recreation Classes

## Class/Program Locations

<b>BCC</b> Brea Community Center 695 East Madison Way 990-7100	<b>BMGC</b> Brea Municipal Golf Course 501 W Fir 529-3003	<b>Outside Brea:</b>
<b>Brea locations:</b>	<b>CHP or CHPTC</b> Country Hills Park Tennis Court (Associated Rd. between Birch St. and Lambert Rd.)	<b>BB</b> Backs Bldg. 201 N. Bradford, Placentia
<b>AP</b> Arovista Park (Imperial Hwy and Berry)	<b>IDS</b> Imperial Dance Studio 860-F W Imperial Hwy.	<b>FMC</b> Fullerton Museum Center 301 Pomona Ave., Fullerton
<b>BDC</b> Brea Dance Center 330 N. Brea Blvd., #11 529-9930	<b>SK-FS</b> Shaolin Kung-Fu School 1219 Imperial Hwy., #103 449-9125	<b>FSC</b> Fullerton Senior Center 340 W Commonwealth Fullerton 738-6305
<b>BJHS</b> Brea Junior High School 400 N. Brea Blvd. 990-7500	<b>TP</b> Tamarack Park 520 N. Tamarack Ave. (Tamarack Ave. and Lambert Rd.)	<b>HP</b> Hillcrest Park Red Cross Bldg. 1207 N. Lemon, Fullerton
<b>BOHS</b> Brea Olinda High School Tennis Courts 789 Wildcat Way		<b>YLCC</b> Yorba Linda Community Center 4501 Casa Loma Ave. Yorba Linda 961-7181

**\$1.50 per hour, per child**  
Available to adults attending a Brea Community Services sponsored program/activity at the Brea Community Center.  
**KidWatch** KidWatch punch pass available.

Child Care: ages 18 mos-12 yrs		
	MORNING HOURS	EVENING HOURS
Mon:	8:30 am-1:30 pm	4:30-9:30 pm
Tue:	8:30 am-1:30 pm	5:00-9:00 pm
Wed:	8:30 am-1:30 pm	5:00-9:00 pm
Thu:	8:30 am-1:30 pm	4:30-9:00 pm
Fri:	8:30 am-1:30 pm	4:30-8:30 pm
Sat:	8:00 am-11:00 am	
Sun:	9:45 am-12:00 pm	

Infant Care: ages 3-18 mos	
	MORNING HOURS
Mon-Fri:	8:30 am-11:00 am

**Class Registration**  
Registration will be accepted by mail, by telephone with a charge card or in person at the Community Center. Registration continues until the first day of class/activity unless otherwise specified. For phone registration, please call (714) 990-7100.

For information call the following numbers: Classes- 671-4428; Sports Leagues- 990-7775; Tiny Tots- 990-7631; En Español, Larra a Judy Campos- 990-7776.

**Policies and Procedures**

- All class registration is processed by the Community Services Department staff. NO EXCEPTIONS. Registration will be processed per class registration schedule.
- All classes are subject to change or cancellation if minimum class enrollment is not met.
- NO CLASS REFUNDS will be made after the first class unless the class is canceled. Requests for refunds for one or two-week workshops must be made before the first class begins.
- A \$5 fee will be charged per class for the processing of requests for refunds.
- Youths 16 and older may register for adult classes.

If you or any other participants for whom you are registering will require special assistance to participate in this program, please let us know by calling 671-4428.

## ADULT OR LEGAL GUARDIAN

LAST NAME	FIRST NAME
ADDRESS	*CITY STATE ZIP
DAY PHONE	EVENING PHONE
EMERGENCY CONTACT	EMERGENCY PHONE

Check here if you live, work or attend school in Brea\*  Check here if you DO NOT live, work or attend school in Brea, add \$5 per class\*\*

## PARTICIPANT INFORMATION

LAST NAME	FIRST NAME	SEX (M/F)	DATE OF BIRTH	CLASS TITLE	CLASS NO.	**ADD \$5 PER CLASS IF BOX B CHECKED	CLASS FEE

FORM OF PAYMENT:  CASH  CHECK  CREDIT CARD (please fill out credit information below) SUB TOTAL

Credit Card No. Exp. Date Signature GRAND TOTAL

HOW DID YOU LEARN ABOUT THESE PROGRAMS?  
 FLYER/BROCHURE  NEWSPAPER  WATER BILL INSERT  VIDEO BREA LINE  WORD OF MOUTH  OTHER \_\_\_\_\_  
 BREA LINE  
 HOW DO YOU RECEIVE BREA LINE? \_\_\_\_\_ MAILED TO RESIDENCE \_\_\_\_\_ FROM CHILD'S SCHOOL \_\_\_\_\_ FROM BREA COMMUNITY CENTER \_\_\_\_\_ OTHER \_\_\_\_\_

In consideration of accepting this registration, I agree to indemnify and hold harmless the City of Brea and any of their officers, agents or employees from any liability of claim or action for damages from or in any way arising out of participation in this program by the person(s) registered, except for illness or injury resulting from gross negligence or willful misconduct on the part of the City of Brea or their officers, agents or employees. In case of injury, accident or other emergency, employees of the City of Brea and/or its agents are hereby authorized to secure medical care deemed necessary as a result of accident or injury to the participant. I further agree to pay any and all costs incurred as a result of said treatment. I give permission to the City of Brea to photograph me participating in these programs, and I agree to release such photographs to publicize City programs. Furthermore, I agree that I will not receive any compensation for such use.

Signature \_\_\_\_\_ Date \_\_\_\_\_

# Special Events and Family Activities

## Gotta Have Art—Create Banners for the Community Center!

The 9th annual Gotta Have Art event is Saturday, May 17, from 9 a.m. to 12:30 p.m. at the Community Center. This fun-filled morning of painting is co-sponsored by the Brea Rotary Club School and youth groups design and paint original banners for display at the Community Center for one year. Gotta Have Art is open to teams of six children and one adult, ages pre-school through high school. Each participant receives a limited edition t-shirt and four teams win special awards. Sign-up by Friday, April 18. For more information on signing up a team, please call 990-7177.



## CASTING CALL! AUDITION NOTICE for "Sylvia"

Sylvia is an A.R. Gurney comedy about a man going through a mid-life crisis who, instead of seeking an extramarital affair, finds what he is looking for in a feisty canine bombshell named Sylvia. An all out war ensues between wife and dog for the man they both love. Rehearsals start April 15 with performances beginning May 30 through June 15, 2003. Send photo & resume by March 28 to: Sylvia, Curtis Theatre 1 Civic Center Circle, Brea, CA 92821 Non-Union - No Pay For more information and cast breakdown, call the Curtis Theatre (714) 990-7723.



## See, Hear, Smile! A FREE Health Fair for Families

Saturday, April 5 • 9 a.m.-1 p.m.  
Brea Community Center • 695 E. Madison Way

Looking bright and hearing good news... that always makes you smile! The Brea Family Resource Center's spring health fair offers a fresh start for healthy families. Free vision, hearing and dental screenings will be available. Also get immunizations for children along with lots of useful information for a healthy outlook on life. Bring the family and brighten your outlook!



♥ Teeth Forever Ayuda, Inc. - On site dentist for dental screenings and educational presentations for parents. Taking appointments for ages 3 and up. Call (714) 990-7150. Walk-ins also welcome.

- ♥ Blood pressure readings
- ♥ Hearing screenings for all ages
- ♥ Information on nutrition
- ♥ Affordable health coverage information
- ♥ Community based health resources
- ♥ Food, Giveaway Prizes!

Sponsored by AYUDA Inc., Brea Disposal Inc., Brea Headstart, Kaiser Permanente, North Orange County Sertoma Club, Placentia Linda Community Hospital and So. California College of Optometry.

For more information call the Brea Family Resource Center (714) 990-7150

## COMING SOON TO THE BREA COMMUNITY CENTER...

Look for these exciting summer programs in the May/June issue of Brea Line!  
 • Youth Sports • Baseball • Indoor Mini Soccer • Outdoor Volleyball  
 • In-Line Hockey • Adult Sports • Basketball • Coed Volleyball • Coed Softball  
 • Day Camp • Youth Excursions • Aquatics • Tiny Tots • Passport to Fun  
 • New Zone Hours and Activities

## Sports and Dance for Tots

### Tumbling Tots/Parent and Me

Designed to heighten total body awareness and hand-eye coordination. Class begins with a musical warm-up progressing to fun gymnastic exercises. Instruction includes bars, balance beam and vault. Parent participation required. Instructor: Charter Oaks Gym Staff. \*\*\$5 insurance fee to instructor. \*\*No class 5/26.

Dates	Day	Time	Age	Fee	Loc	Class #
3/31-4/28	Mon	9:15-10A	2-3	\$48*	BCC	1000.201
5/5-6/9**	Mon	9:15-10A	2-3	\$48*	BCC	1000.202

### Kiddie Gymnastics

Designed to develop strength, coordination, flexibility and rhythm through progressive gymnastic skills. Features movement education to build confidence and improve strength. Instruction includes bars, balance beam, vault and mini-trampoline. Instructor: Charter Oaks Gym Staff. \*\*\$5 insurance fee to instructor. \*\*No class 5/26.

Dates	Day	Time	Age	Fee	Loc	Class #
3/31-4/48	Mon	10-10:45A	3-5	\$48*	BCC	1001.201
5/5-6/9**	Mon	10-10:45A	3-5	\$48*	BCC	1001.202

(Sports and Dance for Tots continues on following page)

For registration information call 990-7100

### Pee Wee Tennis Academy

Grab your racquet and head for the courts! Emphasis will be placed on having fun while learning the four basic strokes: Forehand, Backhand, Volley, and Serve. Students must provide their own racquet. Group ratio is 8:1. Instructor: Tennis Anyone Staff. \*Prorated due to no class 5/26.

Number of Days per Week/Fee per 4 week session	
1 day/\$37* (Prorated - \$28)	2 days/\$52* (Prorated - \$46)
Monday and/or Wednesday	

Dates	Day	Time	Age	Loc	Class #
3/31-4/23	M/W	4:45-5:30P	4-7	CHPTC	1002.201
4/28-5/21	M/W	4:45-5:30P	4-7	CHPTC	1003.201
5/28-6/23*	M/W	4:45-5:30P	4-7	CHPTC	1004.201

### Pre-Ballet and Tap Combo I— Brea Community Center

Combination class incorporates basic movement with beginning ballet and tap steps. Develops coordination and balance; increases self-esteem, and teaches self-discipline. Ballet shoes and dance attire required. Instructor: Jennifer Huber.

Dates	Day	Time	Age	Fee	Loc	Class #
4/7-5/12	Mon	9:45-10:15A	2-3	\$30	BCC	1005.201
4/7-5/12	Mon	10:15A-10:45A	2-3	\$30	BCC	1006.201
4/7-5/12	Mon	10:45A-11:15A	2-3	\$30	BCC	1007.201

### Pre-Ballet and Tap Combo II— Brea Community Center

This class is a more advanced level of Pre-Ballet/Tap I. Child should have some dance experience prior to enrolling. Will need ballet and tap shoes. Instructor: Jennifer Huber.

Dates	Day	Time	Age	Fee	Loc	Class #
4/7-5/12	Mon	9-9:45A	3-5	\$33	BCC	1008.201



### Beginning Ballet and Tap Combo— Brea Community Center

Introduces basic ballet/tap movements while developing coordination, body control and self-discipline. Ballet and tap shoes and dance attire required. Instructor: Jennifer Huber.

Dates	Day	Time	Age	Fee	Loc	Class #
4/7-5/12	Mon	11:30A-12:30P	4-5	\$36	BCC	1009.201

### Pre-Ballet— Brea Community Center

Introduces beginning dance steps in a fun-filled class. Instructor: Candace Weidman.

Dates	Day	Time	Age	Fee	Loc	Class #
4/9-5/28	Wed	3:15-4P	3-5	\$43	BCC	1010.201

### Dance of the Sugar Plums

Children will be delighted as they embrace the magical meaning of classical music. Taught by a talented instructor who makes famous composers come alive through dances. Children have fun while developing an appreciation of classical music. Please wear ballet shoes. Instructor: Carol Rodriguez. \*No classes on 5/3.

Dates	Day	Time	Age	Fee	Loc	Class #
4/19-5/17*	Sat	9:30-10:15A	3-5	\$28	BCC	1011.201

### Ballet/Tap— Brea Dance Center

Instructor: Christine Goeggel.

Dates	Day	Time	Age	Fee	Loc	Class #
4/12-5/31	Sat	9-10A	3-4	\$43	BCC	1012.201

### Kids Love Music

Enjoy a variety of musical experiences in this parent participation class. Mix one part thunder on an Indian tom-tom, add a glockenspiel for rain, and sprinkle liberally with rhythm band instruments, singing, and puppets. Instructor: Gary Greeno.

Dates	Day	Time	Age	Fee	Loc	Class #
4/4-5/2	Fri	9-9:45A	1-4	\$33	BCC	1025.201
4/4-5/2	Fri	9:55-10:35A	1-2	\$33	BCC	1026.201
4/4-5/2	Fri	10:45-11:15A	4-14 mos	\$33	BCC	1027.201
5/6-6/3	Tue	2:45-3:30P	1-4	\$33	BCC	1028.201
5/6-6/3	Tue	3:40-4:10P	4-14 mos	\$33	BCC	1029.201

### Teddy Bear Tea and Me

This class is designed for young children to establish good manners. Class will include: proper introductions and greetings, learning to accept all kinds of people, proper manners at the table and setting a simple dinner table. There will be a special teddy bear tea party during the last class. Instructor: Carol Rodriguez. \*\$3 materials fee paid to instructor. No classes on 5/3.

Dates	Day	Time	Age	Fee	Loc	Class #
4/19-5/17*	Sat	10:30-11:15A	4-5	\$28*	BCC	1030.201

### Krafty Kids

Children will create fun and easy art projects including cutting, gluing, painting with brushes, sponges and fingers, sand art, collages, including Mother's Day activities. Parent participation required. Instructor: Irene Guiron. \*\$7 supply fee payable to instructor.

Dates	Day	Time	Age	Fee	Loc	Class #
4/8-4/29	Tue	6-7P	3-5	\$26*	BCC	1031.201



## Youth Dance and Fine Arts

### Jazz Hip-Hop

Jazz dance will be combined with Hip Hop flair (as seen on MTV). Style and rhythm will be emphasized as students gain self-esteem and confidence in an upbeat atmosphere. Instructor: Gail Abrahamson.

Dates	Day	Time	Age	Fee	Loc	Class #
4/17-5/22	Thu	3:30-4:15P	8-13	\$39	BCC	1500.201

### Beginning Ballet

Develop coordination and flexibility. Students will learn basic positions and steps at the bar, center and across the floor. Ballet slippers needed. Instructor: Candace Weidman.

Dates	Day	Time	Age	Fee	Loc	Class #
4/9-5/28	Wed	4-4:45P	5-8	\$43	BCC	1501.201

### Ballet/Tap - Brea Dance Center

Basic ballet and tap movements. Instructor: Christine Goeggel.

Dates	Day	Time	Age	Fee	Loc	Class #
4/12-5/31	Sat	10-11A	5-6	\$46	BCC	1502.201



## Youth Sports

### Junior Tennis Academy

Have you ever wanted to hit like the pros? The Academy is designed for new students as well as students at the intermediate level.

Students have the opportunity to participate from one to three days. The focus of the Junior Academy is correct form on the

four major strokes. Students are tested at the end of each session and must successfully pass three skills tests in order to move into the Advanced Junior Tennis Academy. Students must provide their own racquet. Group ratio is 8:1. Instructor: Tennis Anyone Staff. \*\$12 materials fee for uniform purchase to instructor \*\*Prorated due to no class 5/26.

Number of Days per Week/Fee per 4 week session	
1 day/\$52** (Prorated - \$39)	2 days/\$77** (Prorated - \$67)
Monday and/or Wednesday	

Dates	Day	Time	Age	Loc	Class #
3/31-4/23	Mon, Wed	5:30-7P	8-17	CHPTC	1400.201
4/28-5/21	Mon, Wed	5:30-7P	8-17	CHPTC	1401.201
5/28-6/23**	Mon, Wed	5:30-7P	8-17	CHPTC	1402.201

### Advanced Junior Tennis Academy

The Advanced Junior Tennis Academy is for students who have a solid foundation on the forehand, backhand, volley, and serve. These students will be trained in areas of the game such as: ball placement and consistency, advanced stroke development, and match strategy. This class is terrific for students ready to step it up, work hard, and take their games to the next level. Students must provide their own racquet. Group ratio is 8:1. Instructor: Tennis Anyone Staff. \*\$12 materials fee for uniform purchase to instructor. \*\*Prorated due to no class 5/26.

Number of Days per Week/Fee per 4 week session	
1 day/\$61** (Prorated - \$51)	2 days/\$91** (Prorated - \$80)
Monday and/or Wednesday	

Dates	Day	Time	Age	Loc	Class #
3/31-4/23	Mon, Wed	7-9P	8-17	CHPTC	1403.201
4/28-5/21	Mon, Wed	7-9P	8-17	CHPTC	1404.201
5/28-6/23**	Mon, Wed	7-9P	8-17	CHPTC	1405.201

### Jazz for Children - Brea Dance Center

Jazz techniques set to today's music. Instructor: Christine Goeggel.

Dates	Day	Time	Age	Fee	Loc	Class #
4/10-5/29	Thu	3:30-4:30P	7-11	\$46	BCC	1503.201



### Creating Masterpieces with Pencils and Pastels

Students will learn to draw using a variety of fun media: crayons, pastels, pencils, ink, etc. Realistic, cartoon, and expressive styles will be emphasized as well as a variety of subject matter. Instructor: Kathy Breaux. \*\$5 materials fee payable to instructor.

Dates	Day	Time	Age	Fee	Loc	Class #
4/10-5/15	Thu	5-6P	6-11	\$39*	BCC	1504.201

### In-Line Roller Hockey

In-Line Hockey Leagues are set to begin their Spring season at the Brea Community Center. Fundamentals, sportsmanship, player improvement and fun are the main goals of the league. Registration is being accepted until leagues fill. League play starts April 14. Bring your roller blades and any equipment you have. We can provide helmets, full-face shields, full-fingered gloves, elbow pads, full knee-shin pads and a stick. \*\*Non-residents add \$5.

Date	Day	Time	Age	Fee	Loc	Class #
4/14	Mon	3:15-5:30	4-6	\$31**	BCC	3301.202
4/15	Tue	3:15-5:30	7-9	\$31**	BCC	3302.202
4/16	Wed	3:15-5:30	10-12	\$31**	BCC	3303.203

### Jr. High and High School Basketball Leagues for Boys and Girls

Registration is underway for these exciting, action packed leagues. Teams will be created by staff based on playing ability. Only siblings may request to be on the same team. Staff assists in coaching teams and monitoring substitutions. Games will be held at the Brea Community Center on Sundays starting March 23 between 1-5 pm. All players must attend March 16 evaluation clinic. For more information, call 990-7734 or 990-7171.

#### Boys

Date	Day	Time	Fee	Grade	Loc	Class #
3/16	Sun	12-1:30P	\$60	6th-8th	BCC	3540.201
3/16	Sun	1:30-3P	\$60	9th-12th	BCC	3550.201

#### Girls

Date	Day	Time	Fee	Grade	Loc	Class #
3/16	Sun	3-4P	\$60	6th-8th	BCC	3540.202
3/16	Sun	3-4P	\$60	9th-12th	BCC	3550.202

#### Jr. Golf

Covers grip, stance, posture, ball position, introduction to chipping and putting, irons vs. woods, rules and etiquette. Instructor: Jim Howe.

Dates	Day	Time	Age	Fee	Loc	Class #
4/2-5/7	Wed	3-4P	6-15	\$43	BMGC	1406.201
4/2-5/7	Wed	4-5P	6-15	\$43	BMGC	1407.201

#### Jr. Golf

Instructor: Carol Plizga. \*No class 5/24.

Dates	Day	Time	Age	Fee	Loc	Class #
5/17-6/28*	Sat	11A-12P	6-15	\$43	BMGC	1408.201

(Youth Sports continues on following page)

## Programs for Pre-Schoolers

### Junior Tiny Tots Spring Registration

Enrollment packets for the Tiny Tots Spring Session (March 31- June 20) are now available at the Community Center. Morning and afternoon classes are offered. Brea's Tiny Tots program is an excellent way to prepare children for Kindergarten. Participants must be potty-trained and age 3 by December 2, 2002. Mail-in registration is accepted on a first-come basis with Brea residents having priority.

For more information, call 990-7631



### Spring Pre-School Camp

Young children will sing songs, listen to stories, make crafts, meet new playmates and have a thoroughly wonderful day camp experience. And it gives Mom a chance to take an adult class, work out or just relax. Space is limited. Participants must be 3 years of age by December 2, 2002, and potty-trained.

Date	Day	Time	Age	Fee	Loc	Class #
4/21-4/25	M-Th	9:30A-12P	3-5	\$40	BCC	4030.201

### Spring Play Day

April 25 has been set-aside as a special spring day of creativity. Your preschooler will play the day away, no need to bring lunch as children will make their own along with arts and crafts. Activities provided by trained Tiny Tots staff. Children must be potty trained.

Date	Day	Time	Age	Fee	Loc	Class #
4/25	Fri	9:30A-2P	3-5	\$20	BCC	4025.201

For registration information call 990-7100

For registration information call 990-7100



**Youth Karate** **10 wks**  
Learn self-confidence, agility, and physical and mental conditioning. Teaches fundamentals of Shito-Ryu style karate with opportunity to progress in rank. Instructor: Jerry Short.

Beginning						
Dates	Day	Time	Age	Fee	Loc	Class #
4/8-6/10	Tue	4-5P	6-15	\$38	BCC	1409.201
Intermediate						
4/8-6/10	Tue	5-6:30P	6-15	\$38	BCC	1410.201

**Youth Kung-Fu** **4 wks**  
Learn basics of Kung-Fu including kicks, punches, stances, forms and self-defense moves with emphasis on self-control, self-discipline and self-confidence. Wear loose-fitting clothing (sweats and T-shirts ideal). Instructor: Charles Robert, Fourth Degree Black Belt.

Dates	Day	Time	Age	Fee	Loc	Class #
4/9-4/30	Wed	5-6P	6-12	\$25	SK-FS	1411.201
4/12-5/3	Sat	12-1P	6-12	\$25	SK-FS	1412.201

## Youth Enrichment

### Spring Break Day Camp

Keep your youngsters busy during Spring Break. Children will enjoy games, sports, arts and crafts, and computers. To sign up, drop by or call the Brea Community Center at 990-7100. Participants need to bring a lunch. Space is limited to the first 50 participants.

Date	Day	Time	Age	Fee	Loc	Class #
4/21-4/25	M-F	7A-6P	6-12	\$105/wk	BCC	5000.201

### Kid Care Solutions

What is a parent to do? Your child has a day off from school, but you still have to work. We have the solution! Brea Community Center staff will supervise your children in a safe and fun-filled environment. Children will enjoy sports, games, crafts and more. Children need to bring their lunch. Questions? Call 990-7631

Date	Day	Time	Age	Fee	Loc	Class #
3/14	Fri	7A-6P	6-12	\$25	BC	4061.101

### Sound Start Reading

Credentialed teachers test, design and individualize a phonics reading program for each child. Decoding, spelling, vocabulary, comprehension and following directions are featured. Instructor: Readwrite Educational Solutions. \*\$60 materials fee to instructor. \*\*No class 5/26.

Dates	Day	Time	Grade	Fee	Loc	Class #
4/14-5/7	M/W	4-5:30P	K-1st	\$100*	HP	1600.201
5/12-6/9**	M/W	4-5:30P	K-1st	\$100*	HP	1600.202

### Developmental Reading Program

A supplementary, phonics-based reading program designed to improve comprehension, vocabulary and spelling. Parents receive mid-term and final progress reports, as well as a computer printout of test results. Instructor: Readwrite Educational Solutions. \*\$60 materials fee to instructor. \*\*No class 5/26.

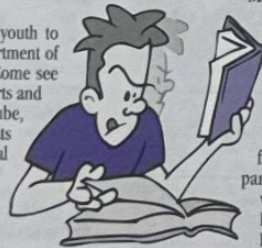
Dates	Day	Time	Grade	Fee	Loc	Class #
4/14-5/7	M/W	4-5:30P	2nd-6th	\$100*	HP	1601.201
5/12-6/9**	M/W	4-5:30P	2nd-6th	\$100*	HP	1601.202

### After School Program

Monday-Friday • 2:30-4:30 p.m.

Grades: 1st-6th

The After School Program is the perfect place for Brea youth to spend their after school hours. Participants enjoy an assortment of free activities in a supervised and positive environment. Come see all of the activities that we have: Daily gymnasium sports, arts and crafts, game room activities with PlayStation 2 and Game Cube, Cooking Club, special presentation weeks such as LabRats Interactive Science Program (March 27), Reading is Radical (February 24-28) and Fit 4 Fun (June 2-6). All you need to participate is an annual 2002/03 After School Program Activity Card, which is just \$15 per child, valid through June 18, 2003. Cards may be purchased at the Brea Community Center Front Counter.



For more information, call (714) 990-7179

### Homework Club

Monday-Friday • 4:30-6:00 p.m.

Grades: 1st-6th

\$40 for a 10-visit punch pass or \$6 per visit

The Homework Club begins immediately following the conclusion of the After School Program. A certificated teacher is available Monday through Thursday to assist children with their schoolwork and difficult subjects. Once schoolwork is completed, participants may take part in games, read for enjoyment, watch videos or do arts and crafts. To sign up for the Homework Club, drop by the Brea Community Center Front Counter.



### Manners for Young People

Boys and girls will learn the niceties of basic good manners. Classes are fun and full of information, including correct communication, grooming and dressing, party and table manners and table settings. Parents are welcome! \*\$3 materials fee payable to instructor. Instructor: Marge Frazier.

Dates	Day	Time	Age	Fee	Loc	Class #
5/6-5/20	Tue	4-5:15P	6-12	\$45*	BCC	1604.201

### Raising a Money WiSe Child

Do you ever wonder how successful your kids would be financially? Getting a good job and earning money is not the full answer, financial literacy is. It is every parent's responsibility to educate their children about personal finance. The first session focuses on educating parents about personal finance and in the following two sessions parents work together with their children in accomplishing the goal of starting the financial foundation. This is a very fun course filled with valuable information and fun activities. Activities will be age appropriate. Instructor: Anna Dor. \*\$5 materials fee payable to instructor.



Dates	Day	Time	Age	Fee	Loc	Class #
4/2-4/16	Wed	6-7:30P	5-Teen	\$37*	BCC	1602.201
5/15-5/29	Thu	6-7:30P	5-Teen	\$37*	BCC	1602.202

### Babysitting Isn't Child's Play

Workshop covers safety and care of infants and toddlers; first aid techniques to help choking victims; and fire and accident safety. Bring a drink and snack. Instructors: Marianne Hampton and Nancy Van Alstine, RN's.

Dates	Day	Time	Age	Fee	Loc	Class #
4/10	Thu	4-6:30P	11+	\$25	BCC	1603.201

### One-day workshop

# Teen Programs

## ATTENTION: Brea Teens

The City of Brea Volunteer Program will host a PARENT/VOLUNTEER MEETING on April 9 at 7:00 p.m. Have all your questions about this summer program answered before you fill out the application. The meeting will take place at the Civic & Cultural Center in Community Rooms A and B, 2nd floor. Volunteer applications will be available the evening of April 9 or you may pick them up at the front counter of the Brea Community Center, 695 E. Madison Way beginning March 24. Program is open to teens 13 to 17 years of age living in Brea.

Please, no phone calls prior to the meeting.



## At the Brea Branch Public Library

The Brea Library is located in the Brea Civic & Cultural Center at the corner of Birch and Randolph. For more information, please call (714) 671-1722. Library Hours: Monday and Thursday: 10 a.m.-6 p.m.; Tuesday and Wednesday: 12-8 p.m.; Saturday: 10 a.m.-5 p.m.; closed Friday and Sunday

### Curious Kids' Preschool Storytime

Mondays 11-11:30 a.m.

Weekly themes for stories, songs, puppets and activities.

### Bilingual Puppet Show

First Monday of every month 5-5:30 p.m.

Presented by Julie Galica and Claudia Romero. Fun for all ages!

### Joe's Storytime & Craft

First Wednesday of the month

7-7:30 p.m.

Join Joe Bell, from the Leo Club at BOHS sharing stories and a craft.

### Step-into-Stories Family Night

Third Tuesday of each month 7-7:30 p.m.

Stories and a craft for the family. March 18 Spring into Fantasy!

April 15 Celebrate Books

### Teen Talent Puppet Productions

Last Wednesday of every month

7-7:45 p.m.

Entertaining puppet shows by teens for the whole family!

### Game Day

Last Thursday of the month 3:30-4:30 p.m.

Play a variety of games. You may bring your own games to share!

### Craft Table

Children may design their own crafts any time the library is open!

### Reader's Theater

Thursday, March 20 3:30-4:30 p.m.

Children, teens, and parents are invited to read parts in a script or to be part of the audience.

### National Library Week

April 6-12

Children draw pictures about their favorite books & receive a surprise!

### Beginning Internet Tutorial

Tuesdays through March 25 11 a.m.-12 p.m.

Saturdays through March 29 9-10 a.m.

Individual one-hour tutorial gets you started if you are new to computers or the Internet. Call to reserve your time.

### Brea Library Book Club

Tuesdays March • 7 to 8 p.m.

The Club members will be discussing Tortilla Flat by John Steinbeck. Come join us for an evening of lively discussion! Please register with the reference librarians.

### 2nd Annual

Teen Poetry Contest March 1-April 4

Teens, ages 12 to 18, are invited to submit one original poem. The top three from each branch library will be compiled into a book and distributed. Stop by for an entry form.



## The Hot Spot for All Brea Teens Grades 7th-12th

The Brea Community Center's Teen Zone is the place for Brea Teens to hang out after school.



These teens enjoy hanging out together on the patio. The Zone is a special place for afterschool and monthly dances at the Brea Community Center.

Daily activities include pool tournaments, air hockey tournaments, football tournaments, Playstation 2, Nintendo Game Cube, music, movies, computer use, Internet access, gym/weight room use, and much more. All you need to participate is an annual \$15 2002/03 Zone activity card (replacements just \$5), which can be purchased at the Community Center's Front Counter. For more information, call 990-7151.

### 7-8th Grade Hot Friday Night Dances (HFN)

March 28 and May 9 • 6:30-9 p.m.

All Brea Junior High students are invited to all of the Hot Friday Night Dances throughout the school year. For only \$5 participants can enjoy a DJ, dancing, free pizza, buddy pictures, raffle, dance contests, and playing pool, air hockey and foosball in the Teen Zone. Permission slips are available at the Community Center Front Counter for this special event.

### 6th Grade Sneak Preview Dances

March 14 "Shamrock Shake" and April 18 • 6:30-9 p.m.

All 6th graders are invited to get a sneak peak at what the Teen Zone is all about and all of the great things it has to offer Brea teens. For just \$5, participants can take part in amazing nights full of DJ music, dancing, free pizza, buddy pictures, raffle, dance contests, and playing pool, air hockey and foosball in the Teen Zone. Permission slips are available at the Community Center Front Counter for this special event.

**School Year Hours: Monday-Friday • 2:30-5:30 p.m.**  
**Teen Zone Holiday Hours: April 4: 12-5 p.m.; April 21-25: 12-3 p.m.**  
**Call 990-7151 for more information**

### Tutoring for Teens

Monday through Thursday • 4-6 p.m. Grades 7th-12th

Students can get assistance with difficult schoolwork from a certified teacher. A 10-visit punch pass is just \$40 or \$6 a visit. Sign up at the Brea Community Center Front Counter. Offered in partnership with North Orange County YMCA and Brea Family Resource Center.

For registration information call 990-7100

For registration information call 990-7100

# Brea Community Center Fitness Complex

695 E. Madison Way (corner of Randolph and Madison) • 990-7100

Annual Pass Holders enjoy free unlimited use of all Fitness Complex facilities, programs and services

## Gym

Two full-size air-conditioned basketball & volleyball courts; drop-in staff-monitored challenge play and more!

### Drop-in/Challenge Basketball

Mon, Tue & Fri • 6 am-10 pm  
Wed & Thu • 6 am-6 pm  
Sat • 7 am-5:45 pm  
Sun • 8-11:45 am

### Drop-in/Challenge Volleyball

Wed • 6-10 pm

## Fitness Complex Fees

Daily drop-in fee covers use of all Fitness Complex facilities, programs and services.

Seniors (60 & up).....\$2*	Youth (6 - 12).....\$1.25*
Adults (19 - 59).....\$3*	QuikFit.....\$1.50*
Teens (13 - 18).....\$1.75*	(11:30am-1:30pm weekdays)

## Low Annual Fitness Pass Fees

Annual pass fee available in a monthly automatic bank deduction payment.

Seniors (60 & up).....\$125*	Teens (13 - 18).....\$105*
Adults (19 - 59).....\$190*	Family.....\$290*

\*Price listed is for those who live, work or attend school in Brea and hold a Brea Community Center (BCC) card. Purchase a BCC for \$5 at the Community Center.

## Exercise/Dance Room

### Cycle

The revolutionary Reebok indoor cycling is a diverse class that requires no prior experience. All levels of fitness can participate as you control the bike's resistance from slow hill climbs to sprinting speed work. You set the pace. A cardio class without comparison! Pass required, pick up at the front counter.



### BodyPump

The original barbell class formatted to music. Designed for all ages and fitness levels, BodyPump delivers Real Results—Real Fast! The athletic based workout uses barbells with adjustable weights to work every major muscle group in the body.

Reservations are available for BodyPump or Cycle classes for just \$1, please see the front counter to make your reservation

## Cardio/Weight Room

A full array of cardiovascular machines: Treadmills, Stairmasters, Elliptical machines and more! Life Fitness strength training equipment and a full range of free weights.

Monday-Friday .6 am-10 pm  
Saturday .....7 am-8 pm  
Sunday .....8 am-5 pm

# Fitness and Wellness

## Friday Night Series

### March

#### YOGABUNS

with Andrea Haas  
March 7, 14, 21 and 28  
6:30 to 8 p.m.  
\$20, 4-week series  
Class Registration  
#2016.101

### April

#### Introduction to Tai Chi

with Marcel Losada  
April 4, 11, 18 and 25  
6:30 to 8 p.m.  
\$20, 4-week series  
Class Registration  
#2018.101

### May

#### Polynesian Islands of Dance

May 2, 9, 16, 23 and 30  
6:30 to 8 p.m.  
\$25, 5-week series  
Class Registration  
#2020.101

For more information, call (714) 990-7740



## Core Classes Coming to the Brea Community Center Fitness Center in March!

Discover the power within and take fitness to the CORE! The Reebok core board is designed to increase core strength, mobility, power, balance and coordination in the core muscles of your mid-section, spine and pelvic floor. The board is adjustable so as you build strength, you can change the board's resistance to create more challenging workouts. The adjustable board allows each participant to work at their own level of fitness!

# Adult Sports and Fitness

## Adult Sports Leagues

Registration is now being accepted for all spring adult sports leagues. Information and registration packets may be obtained at the Brea Community Center, or by calling 990-7734 or 990-7171.

### • 5 on 5 Spring Basketball League

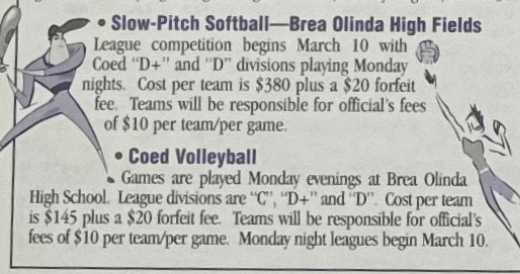
Thursday night "D" league games and Sunday evening "D" and "D+" leagues will be played at the Brea Community Center. Cost per team is \$295 plus a \$40 forfeit fee. Teams will be responsible for official's fees of \$20 per team/per game. Thursday night leagues begin March 6; Sunday leagues, March 30.

### • Slow-Pitch Softball—Brea Olinda High Fields

League competition begins March 10 with Coed "D+" and "D" divisions playing Monday nights. Cost per team is \$380 plus a \$20 forfeit fee. Teams will be responsible for official's fees of \$10 per team/per game. Monday night leagues begin March 10.

### • Coed Volleyball

Games are played Monday evenings at Brea Olinda High School. League divisions are "C", "D+" and "D". Cost per team is \$145 plus a \$20 forfeit fee. Teams will be responsible for official's fees of \$10 per team/per game. Monday night leagues begin March 10.



### Brea World Team Tennis—Adult League

Increase skills by playing others with higher ability levels. Round-robin format. \*No class 4/20 & 5/25. For additional league information, call Laura Weber at (714) 674-0190.

Dates	Day	Time	Age	Fee	Loc	Class #
4/6-6/22*	Sun	8-11:30A	16+	\$25	BOHS	1800.201

### Adult Golf (Beginning/Intermediate)

Covers grip, stance, posture, ball position, introduction to chipping and putting, irons vs. woods, rules and etiquette. Clubs provided on request. Instructor: Jim Howe. \*\$4.25 golf ball fee each meeting.

Dates	Day	Time	Age	Fee	Loc	Class #
4/2-5/7	Wed	5-6P	16+	\$43*	BMGC	1801.201
4/5-5/10	Sat	8-9A	16+	\$43*	BMGC	1802.201
4/5-5/10	Sat	9-10A	16+	\$43*	BMGC	1803.201

### Adult Golf (Beginning)

Instructor: Carol Plizga. \*\$4.25 golf ball fee each meeting. \*\*No class 5/24.

Dates	Day	Time	Age	Fee	Loc	Class #
5/16-6/20	Fri	10-11A	16+	\$43*	BMGC	1804.201
5/17-6/28**	Sat	10-11A	16+	\$43*	BMGC	1805.201

### Fencing

Fundamentals include stance, attacks and defenses. Last class is a contest among participants. Wear tennis shoes and bring a glove for the dominant hand. Instructor: Orange Coast Fencing Academy. \*Prerequisite: Completion of beginning level class. \*\*\$10 materials fee payable to instructor.

### Beginning

Dates	Day	Time	Age	Fee	Loc	Class #
5/8-6/12	Thu	7-8:30P	12+	\$45**	BCC	1806.201

### Intermediate\*

5/8-6/12	Thu	8:30-9:50P	12+	\$45**	BCC	1807.201
----------	-----	------------	-----	--------	-----	----------

### Yoga - Hatha (Beginning)

Bikram's hatha yoga instructor guides you through a non-impact exercise program designed to eliminate stress, build strength, improve flexibility and bring your life into balance. Bring a mat or towel, a water bottle, and be dressed for exercise. Instructor: Jim Hull \*\$3 optional materials fee to instructor.

Dates	Day	Time	Age	Fee	Loc	Class #
4/9-6/11	Wed	7:30-9P	16+	\$79*	BCC	1808.201

### Qigong for Health

This Chinese system of gentle exercise reduces blood pressure, improves nerve function, regulates the digestive system and treats chronic fatigue syndrome. In the Qigong system, health is defined more as a state of overall wellness in which the mind is clear, emotions are balanced, the body is free from organic illness, and strong vitality is coupled with a sense of well-being. Instructor: Frank Mc Gouirk. \*Note if enrolling for Tai Chi also, fee for Qigong is \$10.

Dates	Day	Time	Age	Fee	Loc	Class #
5/8-6/12	Thu	6:30-7P	16+	\$20*	BCC	1809.201

### Tai Chi Chuan

Acclaimed as the ideal form of exercise, Tai Chi helps improve circulation and reduce blood pressure. Self-defense techniques will also be included. Instructor: Frank Mc Gouirk.

Dates	Day	Time	Age	Fee	Loc	Class #
5/8-6/12	Thu	7-8P	16+	\$40	BCC	1810.201

### Adult Kung-Fu

Learn the Shao-Lin Kung-Fu basics, including kicks, strength and flexibility training and self-defense techniques. Instruction emphasizes self-control, self-discipline and self-confidence. Wear loose fitting clothing. Instructor: Charles Robert, 4th Degree Black Belt.



Dates	Day	Time	Age	Fee	Loc	Class #
4/9-4/30	Wed	7-8P	16+	\$25	SK-FS	1811.201
4/12-5/10	Sat	11A-12P	16+	\$25	SK-FS	1812.201

## Group Exercise Class Schedule

	MONDAY	TUESDAY	WEDNESDAY	THURSDAY	FRIDAY	SATURDAY	SUNDAY
Morning Classes	Sr. Low Impact 8-9 a.m.	BodyPump 6-7 a.m.	Beg. Tai Chi 8:30-9:30 a.m.	BodyPump 6-7 a.m.	Sr. Low Impact & Chair Aerobics 8-9:30 a.m.	NEW! Core Cardio 8-9 a.m.	BodyPump 9-10:15 a.m.
		Sr. Low Impact 8-9 a.m.		Sr. Low Impact 8-9 a.m.		jazzercise. 9-10 a.m.	
		Sr. Stretch 9-9:30 a.m.		Sr. Stretch 9-9:30 a.m.	BodyPump 9:30-10:30 a.m.		
	BodyPump 9:30-10:30 a.m.	jazzercise. 9:30-10:30 a.m.	Cardio Kick 9:30-10:30 a.m.	jazzercise. 9:30-10:30 a.m.	Yoga 11 a.m.-12 p.m.	Cycle 10-11 a.m.	Tae Bo 10:15-11:15 a.m.
QuikFit	Yoga 12-1 p.m.	Cycle 12-1 p.m.	BodyPump 12-1 p.m.	Yoga 12-1 p.m.	Cycle 12-1 p.m.		
Afternoon Classes	Cycle Sample 4:30-5:15 p.m.	BodyPump 5:30-6:30 p.m.	NEW! Core/Circuit 5:30-6:30 p.m.	Cycle 4:30-5:30 p.m.	Country Line Dance 1:15-2:15 p.m.		
	NEW! Core/Circuit 5:15-6:15 p.m.		Pilates 5:30-6:30 p.m. Loc: Art Studio	Cardio Kick 5:30-6:30 p.m.	BodyPump 4:30-5:30 p.m.		
	BodyPump 6:15-7:30 p.m.	Cardio Kick 6:30-7:30 p.m.	BodyPump 6:30-7:30 p.m.	BCC Groove Dance 6:30-7:30 p.m.	NEW! Core Cardio 5:30-6:30 p.m.		Yoga 3:30-4:30 p.m.
	Cycle 7:30-8:30 p.m.	Power Yoga 7:30-8:30 p.m.	Cycle 6:30-7:30 p.m. Loc: Art Studio		FRIDAY NIGHT Fitness Series		
	Tae Bo 8:30-9:30 p.m.		Yoga 7:30-8:30 p.m. Loc: Art Studio	Yoga-Latte Combo of Yoga & Pilates 7:30-8:30 p.m.	Times vary, see following page		
							All classes subject to change.

For class information call 990-7100

For registration information call 990-7100

## Adult Dance and Fine Arts

**Ballroom Dance - Beginning** 6 wks  
Learn the basics of standard social dances such as swing, waltz, cha cha, foxtrot, and tango. Instructor: Gail Abrahamson.

Dates	Day Time	Age	Fee	Loc	Class #
4/14-5/19	Mon 6-7P	16+	\$39	BCC	1900.201

**Country Western Line Dance** 6 wks  
Learn today's hottest line dances including Storybook Ending, No Way Jose, Tush Push, Watermelon Crawl, Power Jam, and Boot-Scootin' Boogie. Instructor: Gail Abrahamson.

Dates	Day Time	Age	Fee	Loc	Class #
4/14-5/19	Mon 7:15-8:15P	16+	\$39/Person	BCC	1901.201

**Salsa Dancing** 5 wks  
Add spice to your life with Salsa Dancing! This sexy and stylish Afro-Cuban dance features swaying rhythms and spicy beats, fast steps, turns, dips and swings. This beginning class will gradually progress teaching the men to lead and ladies to follow. It's fun, it's easy! No more stepping on your partner's feet or hanging back when the music starts to play. Partners not required. Pre-register as space is limited. Instructor: Greg Hernandez.

Dates	Day Time	Age	Fee	Loc	Class #
4/12-5/10	Sat 4-5P	16+	\$48	BCC	1902.201

**Salsa Dancing Beginning II** 5 wks  
Learn to add style to your basics. This class focuses on male leading techniques and pattern sequencing. There will be an emphasis on "shine" (dancing apart/solo) work. We will cover cross body lead and open break partnering combinations that will make you look confident on the dance floor. More advanced footwork and movements will be broken down. Instructor: Greg Hernandez.

Dates	Day Time	Age	Fee	Loc	Class #
4/12-5/10	Sat 5-6P	16+	\$48	BCC	1903.201



### Oil Painting Workshop Series

Join the fun of oil painting even if you've never drawn or painted before! Paint along with nationally recognized gallery artist and teacher Thomas Brown in these easy, step-by-step workshops where all equipment is supplied! You'll take home a finished 10' x 8' oil painting on canvas from each class. \*A \$15 materials fee payable to the instructor at each workshop covers everything you will need. Fee discounted if enrolling in all three workshops. See note at end of workshops.

**Classic California Landscapes** One-day workshop  
Forget your cares for a while as you paint your own California landscape masterpiece using fun step-by-step instructions. Learn tips and techniques professional artists use to create beautiful oil paintings and get personal guidance to guarantee satisfying results.

Dates	Day Time	Age	Fee	Loc	Class #
4/3	Thu 6:30-9:30P	16+	\$25*	BCC	1904.201

**Majestic Mission Arches** One-day workshop  
Capture the classic architecture of San Juan Capistrano Mission on your very own canvas. You'll be shown professional oil painting methods to create special dramatic effects with paint. Personal assistance is included as needed.

Dates	Day Time	Age	Fee	Loc	Class #
4/10	Thu 6:30-9:30P	16+	\$25*	BCC	1905.201

**Spring Still Life With Flowers** One-day workshop  
Experience the joy of creating a colorful still life painting by using a series of surprisingly simple steps anyone can follow. You'll take home a frame-worthy painting.

Dates	Day Time	Age	Fee	Loc	Class #
4/17	Thu 6:30-9:30P	16+	\$25*	BCC	1906.201

NOTE: Series discounted if enrolling in all three workshops—\$65.00\* Class # 1909.101

**Introductory Watercolor Painting** 5 wks  
Basic botanical drawing and watercolor painting will be taught. Emphasis will be on composition, color, value and form working from natural subjects. Instructor: Anne Williams. \*\$15 materials fee payable to instructor, includes all supplies. \*\*No class 5/26.

Dates	Day Time	Age	Fee	Loc	Class #
4/28-6/2**	Mon 6:30-8:30P	16+	\$45*	BCC	1908.201



## Adult One-Day Craft Classes

**Spring Pressed Flowers** One-day Workshop  
Learn how to make your own handmade paper and then decorate stationery, bookmarks and gift tags with pressed flowers. Surprise family and friends with a special gift for Easter or Mother's Day! Instructor: Christine Angeli. \*\$10 materials fee payable to instructor.

Dates	Day Time	Age	Fee	Loc	Class #
4/5	Sat 9A-12P	16+	\$15*	BCC	1925.201

**Aroma Spa** One-day Workshop  
Create your own home spa. Together we will make a facial scrub, foot scrub, clay mask, and you'll also learn how to scent incense sticks. Most ingredients to make these items are found in your kitchen. You will take these creations home in a gift tin or basket. Class will end with a paraffin wax treatment for your hands! Instructor: Christine Angeli. \*\$20 materials fee payable to instructor.

Dates	Day Time	Age	Fee	Loc	Class #
4/24	Thu 7-9:30P	16+	\$20*	BCC	1926.201

**Jewelry Fundamentals** One-day workshop  
This class is packed full of information on bead stringing, bracelet & earring construction, layout, design, tools and discount sources. If you have broken necklaces or earrings in need of repair or want to create your own jewelry inexpensively, this class is for you. Instructor: Christine Angeli. \*\$10-15 materials fee payable to instructor covers a gemstone necklace or bracelet & earrings completed in class.

Dates	Day Time	Age	Fee	Loc	Class #
5/3	Sat 9-11:30A	16+	\$20*	BCC	1927.201

**Rubber Stamp Magic** One-day Workshop  
Christine has authored more than six rubber stamp books and has taught stamping classes for more than ten years. This class is actually six classes in one where you will learn how to emboss, chalk, use hologram & stamping bond powders and watercolor along with all the basics. You will complete 8 cards in class. Instructor: Christine Angeli. \*\$5 materials fee payable to instructor.

Dates	Day Time	Age	Fee	Loc	Class #
5/14	Wed 6:30-9:30P	16+	\$20*	FSC	1928.201

## Adult Special Interest Classes

**"Crash Course" in Basic Canine Manners** 4 wks  
This fast-paced 6-hour course is geared for people who need to accomplish their dog training goals and get behavior problems under control within a limited period of time. During each 1 1/2 hour meeting, several new obedience skills will be introduced and a variety of corrective measures for bad habits will be discussed. Exercises will include: sit and down on command, stay in sit or down position with distractions, come when called and controlled walking on a leash. For dogs ages 4 months or older, vaccinations must be current. Please pre-register and you will be contacted regarding what to bring to first meeting. (Dogs are to be brought to all meetings). Instructor: Karol Angevine \*\$3 insurance fee is due to the instructor.

Dates	Day Time	Age	Fee	Loc	Class #
4/5-4/26	Sat 9:30-11A	16+	\$55*	BCC	1940.201

**Become a Published Writer** One-day Workshop  
You like to write. You have interesting stories to tell. Now learn the secrets to getting them into print. In a single session, you will discover what newspaper and magazine editors want, how to approach them, how to write query letters, where to find the best markets for your story and what type of pay to expect. This is a great class for those who want to see their name in print but just don't know where to start. Class covers all of the basics to help you get published and jumpstart a part-time avocation or a full-time career as a writer. Instructor: Randy Franz.

Dates	Day Time	Age	Fee	Loc	Class #
4/12	Sat 9:30-11:30A	16+	\$17	BCC	1941.201

**Lotions & Potions** One-day workshop  
An aromatherapy workshop where you'll learn how to make all natural lotion and alcohol free perfumes, colognes, room sprays and lip balms. You'll create 3 lip balms, 1 perfume, 1 cologne and a fragrance stone in class. Instructor: Christine Angeli. \*\$20 materials fee payable to instructor.

Dates	Day Time	Age	Fee	Loc	Class #
5/29	Thu 7-9:30P	16+	\$20*	BCC	1929.101

### Spring Craft Boutique

Saturday, March 22 • 9 a.m.-4 p.m.

695 E. Madison Way • Brea Community Center

\$1 admission

Enter our market of wonderful crafts, tasty goodies, personalized treasures and decorative delights presented by more than 250 skilled crafters.

Sorry...Due to customer request NO STROLLERS

KidWatch babysitting service available

Center Café open

Boutique held rain or shine

Call 671-4428 for more details.



## Swing Fling

Friday, April 11

7:30-10:30 p.m.

Brea Community Center

695 E. Madison Way

Enjoy an evening of Big Band sounds of the 13-piece Michael Henebry Orchestra.

Dance the night away or just sit back and listen to all-time favorite tunes like *Satin Doll* and *Moonlight Serenade*. Refreshments available.

Tickets on sale now at the Community Center.

To purchase by phone with credit card, call 990-7100.

\$12 advance purchase:  
\$14 at the door (if available)

For additional information, call 671-4428

Table reservations for parties of ten—add \$2 per ticket

Buy tickets early, the last dance was sold out!

SORRY NO REFUNDS



For registration information call 990-7100

For registration information call 990-7100

(Adult Special Interest Classes continues on following page)



### Intro to Digital Photography

Everything you will need to know to enter the new and exciting world of Digital Photography. We will discuss cameras, film, computers, printers, imaging editing software and archival solutions. Many projects will be presented and explained. Handouts explaining pertinent points will be given out at each session. Instructor: Roy Boorman.

Dates	Day	Time	Age	Fee	Loc	Class #
4/15-4/29	Tue	7-9P	16+	\$45	YLCC	1944.201

### Intermediate Digital Photography

Wondering what to do with that new digital camera? Wondering what to do with those old slides and prints? We will develop projects with your digital pictures and explain how to convert your old slides and prints into digital files to be used in these projects as well. Although not required, bring your digital camera and laptop computer. There will be handouts for each project discussed. Instructor: Roy Boorman.

Dates	Day	Time	Age	Fee	Loc	Class #
5/6-5/20	Tue	7-9P	16+	\$45	YLCC	1945.201



### The Fine Art of Formal Dining

Ms. Frazier will share her extensive knowledge of the protocol of fine dining. Starting with the formal invitations, menu cards, and place settings, and all aspects of proper table etiquette so you can have a wonderful worry-free dining experience for friends or family. Instructor: Marge Frazier. Class includes a dining portfolio. \*\$5 materials fee payable to instructor.

Dates	Day	Time	Age	Fee	Loc	Class #
5/20	Tue	6:45-8:15P	16+	\$24*	BCC	1946.201

### Business Etiquette for Men & Women

Refined etiquette has strategic advantages, especially in the business world. In this class you will learn proper introductions, importance of a firm handshake, positive body language, phone etiquette, table manners & more. Instructor: Marge Frazier. \*\$5 materials fee payable to instructor.

Dates	Day	Time	Age	Fee	Loc	Class #
5/6	Tue	6:45-8:15P	16+	\$24*	BCC	1947.201

### Smart Women Finish Rich

No woman can afford to miss this seminar! Start improving the quality of your financial life right away with seven simple steps to help you live a richer life. Class is based on the best selling book by David Bach. This is a fun educational seminar specifically designed for women. Instructor: Danielle Blunt.

Dates	Day	Time	Age	Fee	Loc	Class #
4/10	Thu	6:30P-8:30P	16+	\$12	BCC	1948.201
5/8	Thu	6:30P-8:30P	16+	\$12	BCC	1948.202

### Financial Workshop

This is a great educational course for individuals who want to learn more about making wise investments. We will start with the basics of finance and rules every investor should know and follow. The following topics will be covered: certificates of deposit; annuities; stock market strategies; reducing taxes and saving for retirement or college. This in-depth look at finances is taught in language that is easily understood. Instructor: Danielle Blunt. \*\$10 materials fee payable to instructor covers the Financial Planning binder.

Dates	Day	Time	Age	Fee	Loc	Class #
5/15-6/5	Thu	6:30P-8:30P	16+	\$10*	BCC	1949.201



### Cookies 1-2-3

Learn fun new cookie recipes that will have them begging for another. This is a hands-on class where you can customize your cookie, adding ingredients you like. Bring a container to take your cookies home. Instructor: Tammy Stewart of Sedona Catering. \*\$7 materials fee payable to instructor.

Dates	Day	Time	Age	Fee	Loc	Class #
4/9	Wed	6-8:30P	16+	\$14*	BCC	1950.201



### Salads 101

Learn the trends in making and presenting main dish and side salads. You will also make some home dressings. Bring a container for leftovers. Tammy Stewart of Sedona Catering. \*\$6 materials fee payable to instructor.

Dates	Day	Time	Age	Fee	Loc	Class #
5/15	Thu	6-8:30P	16+	\$16*	BCC	1951.201

### Chinese Healing and Anti-Aging

Discover the quick way to reduce stress and increase energy for wellness and longevity. Learn the ancient Chinese method to perform self face-lifts for men and women. Identify the power of potent acu-points for weight control, pain relief and natural healing. A lifetime benefit! Instructor: Margaret Zhao. \*\$15 materials fee payable to instructor.

Dates	Day	Time	Age	Fee	Loc	Class #
4/9	Wed	7-9P	16+	\$23	BCC	1952.201

### Bones for Life

Bones are living things and can be strengthened through exercise. The "Bones for Life" program is specifically designed to help prevent or reverse osteoporosis. Increase movement and stamina while increasing bone density in this highly acclaimed class. Please bring a mat, two large bath towels and a pair of socks. Suze Angel, M.A. Certified Feldenkrais teacher. \*Note: if also enrolling in the Sounder Sleep workshop, the fee for both is \$50.

Dates	Day	Time	Age	Fee	Loc	Class #
4/26	Sat	10A-1P	16+	\$33*	BCC	1953.201

### Sounder Sleep

Do you have difficulty falling asleep during these turbulent times? Problems getting back to sleep? Are you in search of more inner peace, acquired through restful sleep? The sleep techniques of the Sounder Sleep Systems were recently featured in Fortune Magazine. You will learn fast-acting, self-help techniques that will have a profound tranquilizing effect on the central nervous system. The same hormones that frazzle your nerves by day disrupt your sleep too. The mini-moves you will learn in this workshop will also be beneficial to easing the problems of mental and physical tension during waking hours. Instructor: Suze Angel, M.A. \*Note: if also enrolling in the Bones for Life workshop, the fee for both is \$50.

Dates	Day	Time	Age	Fee	Loc	Class #
4/26	Sat	2-5P	16+	\$33*	BCC	1954.201

### Become Slender with Hypnosis

Slimming down and feeling great! Through the natural POWER of your mind, create habits and responses without dieting that lead to SUCCESS, COMFORT, and SATISFACTION. Cassette tape is available to purchase through instructor for \$12. Small pillow optional. Instructor: Pamela J. Schmidt, M.S., R.H., Hypnotherapist.

Dates	Day	Time	Age	Fee	Loc	Class #
4/8-4/29	Tue	7:30-9P	16+	\$44	YLCC	1955.201

### Become a Non-Smoker with Hypnosis

Save your breath and your money! This class will guide you to use the natural power of your own mind to claim your right to be smoke free. An optional cassette tape will be available to purchase through the instructor. Small pillow optional. Instructor: Pamela J. Schmidt, M.S., R.H., Hypnotherapist.

Dates	Day	Time	Age	Fee	Loc	Class #
5/6-5/13	Tue	7:30-9P	16+	\$24	BB	1956.201

### Laughlin Turnaround

Take a turnaround excursion to the Flamingo Hilton in Laughlin, Nevada. Luxury coach transportation departs from the Brea Community Center at 6:30 a.m. and returns at approximately 11p.m. Trip includes eight hours of gambling and a free buffet at the hotel plus snacks on the bus. Must be 21 or older to participate. Add \$5 for those who do not live, work, or attend school in Brea. \*No refunds after April 3.

Date	Day	Time	Age	Fee	Loc	Class #
5/3	Sat	6:30A	21+	\$30*	BCC	5500.201



## At the Brea Senior Center

For older adults ages 55+

500 S. Sievers Avenue • (714) 990-7750 • Monday - Friday: 8 am-3 pm

### Travelin' Game Show

Monday, March 24 • 10:45 a.m.

Mark your calendars! The original Travelin' Game Show will be at the Brea Senior Center to entertain you and your friends. Based on TV game shows, seniors will have fun as contestants playing Wheel of Fortune, The Price is Right, Name That Tune and more. We hope to see you there!

### Easy Steps to Improved Nutrition

Monday, April 7 • 11 a.m.

Ever wonder how you could improve your nutrition? If so, this is a presentation you don't want to miss. Discussion will cover simple improvements to your diet and also teach you about the latest news on vitamins and minerals. Presented by Dr. Jason Baietto of Complete Balance Chiropractic.

### Friday Movie Matinee

Last Friday of each month

12:45 p.m.

Enjoy popcorn, punch, and a movie chosen by popular demand. Note: Transportation will be accommodated for those who take the Brea Shuttle.

### Secretary for Seniors

Wednesday mornings • 10 a.m.

Need help with reading, writing or typing letters? Don't miss out on this free volunteer secretarial service available to seniors. Please see the Reception Desk or call for an appointment.

*Note: This is not a legal service and no advice will be administered concerning legal documents.*



Nancy Rantowich helps get your paperwork in order.

### Tai Chi Exercise Class

Mondays • 1 p.m.

All movements are slow, relaxed and regular. This invigorating exercise class is known to help contribute to a calmer mind and nervous system. Please join instructor Carlos Gallegos of the North Orange County Community College District Older Adults Program.



### Afternoon Physical Fitness Class

Wednesdays • 1 p.m.

Would you like to maintain and increase range of motion, build muscular strength, and/or enhance coordination? Join Instructor Molly Knox of the Older Adults Program in performing daily activities of daily living with greater confidence. This is an exercise class you won't want to miss!

### Chimes Class

Wednesdays • 10 a.m.

Learn to play a new musical instrument. Chimes are simple to use. No musical experience is necessary and everyone is welcome.

### Upcoming Celebrations:

• St. Patrick's Day

Friday, March 14  
10:30 a.m.

• Earth Day

Friday, April 18 • 10:30 a.m.

Advanced ticket purchase is required for celebrations. Suggested donation for people 60 years of age and older is \$2, \$3 for those under 60. For more information, please call 990-7219.



### Get the Facts about Breast Cancer

Tuesday, April 29 • 10:30 a.m.

Women over the age of 50 are diagnosed with 77% of new breast cancer cases. Early detection and screening saves lives! Come to this informative presentation and get the facts. Presented by the American Cancer Society.

*Note: A FREE Breast Cancer Screening Clinic will be held Saturday, May 3 at 9 a.m. to 1 p.m. at the Brea Community Center. See following page for details on this program offered through the Brea Family Resource Center.*

### Transportation Services for Brea Seniors

• Brea Senior Center Shuttle provides rides to and from the daily nutrition program. Grocery shopping to a local grocery store is also available for bus riders on Mondays leaving from the Senior Center. Call 990-7750.

• Brea Shuttle provides transportation anywhere in Brea, Monday through Friday, 10 a.m. to 3:30 p.m. for \$1 each way. (800) 581-Ride (7433).

• OCTA ACCESS (DEMAND) provides door-to-door service throughout Orange County for persons ADA eligible for \$1.70 each way. Call (877) 628-2232 Hearing Impaired: (800) 564-4322.

• Senior Services Transportation Program, offered by St. Jude Medical Center, provides free van service for St. Jude patients only to medical related trips to the doctor, hospital or pharmacy. Call (714) 446-7150.

• Med Access Plus provides door-to-door van service to Brea Community Hospital for medical appointments for \$2 each way. Call (714) 255-8247.

• North Orange County Senior Connections Transportation Program, sponsored by St. Jude Medical Center and funded by the County of Orange, provides access to non-emergency medical appointments, therapy and services including health education programs. Must be pre-screened by Office on Aging and ineligible for Access Program. Call (800) 510-2020 for screening, (714) 446-7151 for program information.

• SMART, is a volunteer mileage reimbursement program. It provides transportation to non-emergency medical services. Registered clients are encouraged to find a volunteer to drive them in the volunteer's automobile. Call (800) 510-2020 to register.

For registration information call 990-7100



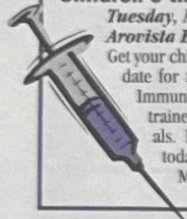
# Brea Family Resource Center

## Supporting Brea Youth and Families

Open: Monday through Friday 9 a.m.-6 p.m. Evening and Saturday hours available by appointment only.  
Brea Community Center • 695 E. Madison Way • (714) 990-7150

### FREE Immunization Clinic for Children 0 through 6 years

**Tuesday, May 13 • 12-3 p.m.**  
**Arovista Elementary School**  
Get your child's immunizations up to date for the coming school year. Immunizations administered by trained healthcare professionals. Make your appointment today! Sponsored by St. Jude Medical Center



### Low-cost Health Insurance Resources

**Monday-Friday • 9 a.m.-6 p.m.**  
Get up-to-date information on free and affordable health insurance for families, receive application assistance and more through the Family Resource Center's Project Connections. By appointment only. Call 671-3631 today for more information.

### Medi Cal and Food Stamp Outstation

**Wednesdays • 8 a.m.-4 p.m.**  
**Appointment required**  
**Sponsored by Orange County Social Services Agency**

Don't let your family's healthcare needs go unmet. New clients receive personal assistance with your application for Medi Cal or Food Stamps. On-site processing available.



### FREE Income Tax Assistance

**Wednesdays and Saturdays through April 13**  
**Sponsored by the Internal Revenue Service**  
Low-income families and individuals receive free income tax assistance from a trained representative of the IRS. Appointment required.

### Volunteer! Be a Mentor

**Mondays, March 10 and April 14 • 6-8 p.m.**  
**Sponsored by CASA**  
Be a steady and positive force in a child's life through CASA (Court Appointed Special Advocates). Join this special mentoring program and serve as an advocate for children in the court system. Be a voice for a child and make a positive impact on a life in the making. Learn more at this special meeting.

### Mobile Medical Clinic

**Tuesdays, March 18 and April 22 • 3-5 p.m.**  
**Sponsored by the Orange County Rescue Mission**  
Get free medical attention for colds, flu, hypertension, diabetes, cuts, and more at the Brea Community Center. A physician's assistant will provide medical attention, offer referrals and dispense antibiotics and other medications. Ideal for those without medical insurance.

### FREE Counseling and Information for Families with Alzheimer's or Memory Loss

**Tuesdays, March 18 and April 22 • 4-7 p.m.**  
**Sponsored by the Alzheimer's Association of Orange County**  
Information is power against Alzheimer's disease and other forms of memory loss. The Alzheimer's Association is the best resource for those confronting the painful reality of a loved one or spouse suffering from rapid memory loss. The agency can help families with estate planning needs, supplemental medical information, developing a partnership with their doctor, and working with health coverage providers to benefit their loved one. Learn where to turn for hope and help from a trained case manager from the Alzheimer's Association. Appointment required.

### Is Your Toddler on Track for School?

**A Special Screening for Kindergarteners**  
**Wednesday, April 9 • 4-7 p.m.**  
**Arovista Elementary School**  
**Sponsored by OC Health Care Agency and BOUSD School Readiness Program**  
Growth is a complex process and this special screening will help you ensure that your toddler is on track for the years ahead. Trained professionals will check your child's cognitive and physical growth, while screening for common childhood development problems.



### Foster and Adoptive Parents Workshop

**Wednesdays, March 19, April 23 and May 21 • 6:30-8:30 p.m.**  
**Sponsored by the Orange County Social Services**  
Change the life of a child! Informative meetings for parents considering foster care or adoption.

### FREE Breast Cancer Screening

**Saturday, May 3 • 9 a.m.-1 p.m.**  
**Sponsored by YWCA Encore Plus Program**  
Low-income women, 40 years old and over, can receive free breast cancer screening and education. Call (714) 990-7150 for information. To make an appointment, call (714) 806-2037 or 935-9720.

### FREE Community Education

All classes offered at the Brea Community Center. Call 990-7150 for information and registration.

- Infant Massage Class**  
**Saturdays, March 1, 8, 15, 29 • 10-11 a.m.**  
**Sponsored by Project Connections and St. Jude Medical Center**  
 Learn techniques to soothe your baby and reduce colic and sleepless nights! Infant massage can also strengthen your child's circulatory and neurological systems.
- How to Buy a HUD/Foreclosed Home**  
**Thursday, March 13, 7 to 9 p.m.**  
**Sponsored by Consumer Credit Counseling**  
 Ever wonder how you can buy a home in foreclosure? You've heard the myths, now get the facts about purchasing a HUD/Foreclosed home.
- Preventing Single Parent Burnout**  
**Tuesday, April 8, 7 to 8:30 p.m.**  
**Sponsored by Children's Home Society**  
 Juggling kids, work, cub scouts, dance lessons, bills, rent, child care, and car repairs make life hectic for any parent, but can be overwhelming for the single parent. Take a 90-minute time out just for you. Learn techniques that help single parents cope!
- Parenting Young Children**  
**Classes begin May 22**  
**Sponsored by Community Service Programs, Inc.**  
 Designed for parents with children 0-5 years old. Learn to navigate the terrible 2's with ease, gain cooperation from your child and work through moments of frustration. Find out how to monitor the development of your toddler in this free 8-week course. Class meets weekly. Space is limited; reserve your spot today.
- More About the ADD/ADHD Child**  
**Wednesday, May 7 • 7-8:30 p.m.**  
**Sponsored by Western Youth Services**  
 Learn more about living and coping with children or teens with ADD/ADHD. Gain insights from trained professionals that can help you make the best decisions if you have a family member diagnosed with ADD/ADHD.
- ESL Classes**  
**Mondays and Wednesdays**  
**April 2-June 29 • 8:30 to 11 a.m.**  
**Sponsored North Orange County Community College District**  
 Learn English in a fun and friendly environment.



Brea Community Volunteer Program

## "People Make a Difference One By One"

One By One, Brea's Community Volunteer Program, promotes collaboration, partnership and volunteerism. Continue the Brea tradition of supporting the community at large by working together. To find out more about these and other volunteer opportunities, contact Brea's Community Volunteer Coordinator at (714) 990-7175 or e-mail loism@ci.brea.ca.us

### Brea Community Hospital Auxiliary

Friendly, energetic volunteers are needed to help in the gift shop, transport patients in wheelchairs, deliver mail and flowers, greet and direct visitors and assist with light filing. Must be 18 years or older.

### Friends of the Brea Library

Your help is needed in the Library's Bookstore. Hours vary, but help is especially needed after school and Saturdays.

### Cystic Fibrosis

This agency is looking for volunteers, teens to seniors, to perform light office work, data entry, filing, preparing mailings. Volunteers are needed to serve on various fundraising committees.

### FISH (Friends in Service to Humanity)

Volunteer drivers are needed to take elderly individuals to doctor/dental appointments, to the pharmacy, or the grocery store. Drivers volunteer once a month for one day, 8 a.m. to 5 p.m., Monday through Friday (excluding holidays) or half-day, or may choose to be on call.

### H. I. S. House (Homeless Intervention and Shelter House)

Childcare helpers are needed on Monday and Wednesday evenings from 6:30 until 8 p.m. and on Saturday morning from 9 a.m. until 12 p.m. H. I. S. House is also in need of Resident Support Volunteers. Training and orientation provided.

### Laurel Elementary School-Brea

Tutors needed! Volunteers assist students during lunch and after school in grades 1st through 6th



Kathy Graves keeps the gift shop looking good in addition to other duties as a volunteer for the Brea Gallery one day each week.

with various subjects. Help children with their reading skills from 7:30 to 8 a.m. and again from 2:15 to 3 p.m.

### Project Together—O.C. Health Care Agency

Mentors needed to form one-to-one friendships with emotionally troubled children and teens. Must be 21 years of age.

### St. Jude Medical Center Thrift Shop

Make our new thrift shop successful. Duties may include stocking shelves, cleaning and folding items, cashiering, small sewing repairs, and some clerical duties. Shop is open Monday through Saturday, 9 a.m. to 6 p.m. Volunteers must be 18 years of age or older.

### Easter Seals Senior Day Care

Our seniors love to be entertained! Play your musical instrument, sing a song, use our stage to rehearse your next play with a group. A piano is available. Take a walk with one of our seniors in the nearby park. Join us for a few smiles and lots of fun.

### Alzheimer's Association

Caring for an Alzheimer patient has been called the 36-hour day. Volunteers are needed to alleviate some of the stress and isolation associated with caregiving. Teams of volunteers visit patients and care-givers twice a month.

### Boys Hope Girls Hope

Volunteers with large hearts and able bodies are needed to spend time with one of our hurt and at-risk 8 to 14 year children. Must be 21 years old and willing to take an active interest in a child's life for one year.

### Brea Boys and Girls Club

The club is looking for volunteers to tutor children after school and to help with arts & crafts, and sports activities.

### Cathy Torrez Learning Center

This is a wonderful opportunity for high school students to get involved in their community by tutoring children after school. All ages welcome.

### CASA (Court Appointed Special Advocates)

Court Appointed Special Advocates serve as advocates for abused children who are in the dependency system. CASA volunteers develop a weekly one-to-one relationship with a child and become their voice in court. Orientation and training provided.

### CAST (Child Abuse Services Team)

CAST provides support to Orange County's most seriously abused chil-

dren. Gather items for a fun "dress-up" closet for children to relax and play in before they make court statements concerning abuse.

### Cleta Harder Developmental School

Volunteers help children with minimal learning and behavior difficulties through the Kids Unlimited Program Monday through Friday between 2 and 5 p.m. "Special" people are also needed to assist with the rehabilitation of "Special Needs" students. Volunteers are asked to spend a minimum of 2 hours weekly between 9 a.m. and 2 p.m.

### Crittendon Family Services

Become a Special Friend or a Mentor to a child in this residential treatment program. Loving volunteers are needed to rock babies during daytime hours.

### Heartland Hospice

Join our compassionate and caring team of people willing to help others by providing friendly visits, transportation, and respite for families. Training and support are provided for all volunteers.

### YMCA New Horizons

Caring volunteers are needed to work with the developmentally disabled population and to assist with recreational trips. Participants take Friday night, Saturday and/or weekend excursions.

## VOLUNTEERS NEEDED:

Bring your school group, church group and friends to help at the Spring Boutique on Friday evening, March 21, and on Saturday, March 22, at the Brea Community Center. Unload vendor cars beginning on Friday evening and again on Saturday morning. Then help is needed to reload cars on Saturday afternoon. Cashiers 18 years + are also needed.

## VOLUNTEER CONNECTION DAY

### April 26, 2003

Commit to a special day of community service in Brea on Saturday, April 26. Make an impact with a group service project or sign up as an individual for a variety of local projects being coordinated for that day. Call the City of Brea Volunteer Coordinator for more details about this county-wide event and other ongoing initiatives.

# Art Gallery

## Two Photography Exhibitions Opening at the Gallery



**March 15-May 2**  
**Opening reception: March 14**  
*Mirror Images: Daguerre and the First Photographic Process*, presents 25 Daguerreotypes, primarily portraiture and landscape and discusses the first photographic process as well as the man attributed with its invention, Louis Jacques Mandé Daguerre.

A concurrent exhibition, *Out of the Box: Contemporary Photography*, features approximately 50 works of contemporary photography ranging from the strikingly beautiful to the abstract and experimental. *Out of the Box* examines the work of

photographers who work "outside of the box" both in terms of traditional concepts and techniques. *Out of the Box* highlights photographers whose work is challenging the norms and opening up new directions in photography.



Please join us for our FREE opening reception of *Mirror Images: Daguerre and the First Photographic Process* with *Out of the Box: Contemporary Photography* on Friday, March 14, from 7-9 p.m. featuring live entertainment and refreshments.

## Children's Saturday Workshop

All workshops are for children ages 6-12 (children 5 years old must be accompanied by an adult). Each workshop is \$5 per child for materials, instruction is free, and workshops must be paid for in advance. Please call the Brea Community Center at 990-7100 to enroll your child for the workshops by referring to the appropriate registration number. Cancellations are accepted 24 hours in advance; there are no refunds issued for "no shows." For more information, please call the Gallery at 990-7730.

### Experiments with Camera Lenses

**March 22 • 1:30-3 p.m.**  
 Students learn how artists use lenses as tools to capture images. Students will also learn about the camera obscura, an early form of camera.  
**Registration #6500.201**

### Silly Faces

**April 5 • 1:30-3 p.m.**  
 Students use Polaroid photos of themselves to create portraits that are expressionistic, rather than realistic. Participants also learn about artists Max Beckmann, Vincent Van Gogh and others.  
**Registration #6501.201**

### Photo Montage

**April 19 • 1:30-3 p.m.**  
 Students will work from photographs to create drawings that explore new visual associations by combining various images in interesting combinations. Students learn about artist Richard Hamilton.  
**Registration #6502.201**



**Gallery Hours:** Wednesday, Thursday and Sunday, 12 to 5 p.m., Saturday and Friday, 12 to 8 pm. Closed Monday, Tuesday and holidays.  
**Admission:** \$1 for adults and free for ages 17 and under. Call 990-7730. Brea residents FREE on Sundays.

# Curtis Theatre



**A Tribute to the Beatles—Yesterday**  
**Friday and Saturday, March 28 and 29 • 8 p.m.**  
 Come take a "magical mystery tour" from 1964-1970 and you will "believe in yesterday"! This tribute has been thrilling audiences all over the world with their stirring recreation of the "fab four," complete with costume changes from different Beatle eras.  
**Tickets:** Adults \$25, Seniors \$22, Children \$15

## Smashing Broadway

**Friday and Saturday, April 11 and 12 • 8 p.m.**  
 Three bright stars embellish Broadway's finest moments. Powerhouse show-stoppers, electrifying new hits and best-loved classics will leave you breathless. Rocketing through some of the most memorable songs ever heard on stage, this fresh new revue delivers everything from the classic romance to pulse-pounding rock.  
**Tickets:** Adults \$25, Seniors \$22, Children \$15

## MacHomer or "The Simpsons Do MacBeth"

**Saturday, April 26 • 2 and 8 p.m.**  
 Performing to sold-out houses everywhere, this tour-de-force must be seen to be believed. This one-man vocal extravaganza features over 60 voices from TV's favorite dysfunctional family in a performance of Shakespeare's bloodiest tragedy. Homer Simpson stars as MacBeth, Marge Simpson as Lady MacBeth, and Mr. Burns as King Duncan, just three of 60 characters, all of whom are immediately recognizable. The script, (85% is the words of Shakespeare) is true to the original tragedy with the addition of topical references and symbols, *MacHomer* is hilarious, touching, beautiful to watch and refreshingly accessible.  
**Tickets:** Adults \$30, Seniors \$28, Children \$20



## Kids' Culture Club

Show there is more to life than TV! The Kids' Culture Club is entertaining, interactive, inspirational and educational. **Tickets:** \$6

## Box Tales

**March 23 • 2 p.m.**  
 This acclaimed troupe uses storytelling, masks, traditional instruments, music, movement and participation to delight audiences. Rich African folklore comes alive as performers draw you into different regions of this fascinating part of the world through stories, dance and song.



## Charlotte's Web

**April 13 • 2 p.m.**  
 Adapted from the book by E.B. White. This is the classic story of Fern, a young girl with the ability to understand what animals say. Produced by the Laguna Playhouse, with original music and lyrics, this is a show you will not want to miss!

## Two Friends: Dos Amigos

**May 4 • 2 p.m.**  
 Set on a neighborhood basketball court, this one-act bilingual play is about two street-wise kids who find they have a lot in common even though they don't speak the same language.

**Curtis Theatre Box Office Hours:** Wednesday through Friday, 12 to 5 pm; Saturday, 11 am to 2 pm; and one hour prior to performance.  
**To order tickets:** Call 990-7722 with credit card, fax us at 990-7635 or on-line [www.curtistheatre.org](http://www.curtistheatre.org). Great savings for groups!

The Brea Gallery and Curtis Theatre are located at the Brea Civic & Cultural Center, 1 Civic Center Circle, Brea

## Modernize Bathroom Facilities with New, FREE Toilets



The Municipal Water District of Orange County and Brea's Maintenance Services Department make it easy for residents to update and improve their bathroom facilities. Free toilets will be distributed on Saturday, April 26 from 9 a.m. to 2 p.m. at the Unocal Hartley Center.

These water-saving fixtures will not only improve the look and function in a restroom; they also help to conserve precious resources. To claim a free toilet, simply bring a copy of your current water bill, a credit card (will not be charged) and a photo ID. Old toilets that have been removed are to be brought back to the giveaway site on Saturday, May 10, also from 9 a.m. to 2 p.m. (A charge may be levied if a return is not made.)

The Hartley Center is located at 379 S. Valencia Avenue, which is the northeast corner of Imperial Highway and Valencia Avenue. For additional information, please call 1-800-693-5331.

## City of Brea and School District Share Success And Search for Solutions

### Brea Olinda Unified School District

The City of Brea and the Brea Olinda Unified School District (BOUSD) have partnered on projects over many years and have realized great success on a number of levels. Because good schools reflect upon the quality of a community, this effort is sure to continue.

At this time, both the City and BOUSD are facing tremendous challenge as severe budget cuts by the State of California restrict

the ability to deliver services that are as comprehensive as our residents expect. Both organizations face tough choices in order to remain fiscally sound. In other Brea Line articles the City's budget situation has been reviewed in depth. The District has a parallel dilemma in that funding shortfalls at the State level will result in much less money being distributed for vital programs.

Brea is hit particularly hard by cuts because its District already receives less money per student than virtually all other unified districts in Orange County. This is due to the fact that the State formula for distribution of education money has been locked into property valuations from 1971 and remains unchanged. If BOUSD received the Orange County average, its annual funding would increase by \$15 million.



Students at Fanning School excite their imagination through activities in the school's new media room.

Some renovation and construction will go forward since money for these projects is separate and restricted because it derives from designated bonds or fees. This means that all adjustments must be made in the regular budget, 80% of which is personnel. Inevitably this will affect operations and staffing.

The City of Brea will stand by its schools in seeking innovative solutions for our community. What can Brea citizens do? Now is a good time to seriously consider how to assist schools in meaningful ways as volunteers or sponsors for programs that may be affected in the future. The District will continue to keep us informed of needs. For more in-depth information about BOUSD, its many services and potential budget impacts, you can visit the District's website at [bousd.k12.ca.us](http://bousd.k12.ca.us).

## Prepare Now for Fall 2003 Kindergarten Entrance

The annual kindergarten pre-registration of children who will be eligible to enter kindergarten in September, 2003 will be held district-wide on Thursday, May 1, 2003. Registration will take place at the following locations:

Arovista	Main Office	9:00 a.m.—3:00 p.m.
Country Hills	Day Care Portable	9:00 a.m.—2:00 p.m.
Fanning	Day Care Portable	9:00 a.m.—2:00 p.m.
Laurel	Main Building	8:30 a.m.—2:00 p.m.
Mariposa	Main Office	9:00 a.m.—3:00 p.m.
Olinda	Quad Area	9:00 a.m.—3:00 p.m.

Children who are five years old by December 2, 2003 may enroll for kindergarten. It is not necessary for the kindergarten student to accompany the parent since there will be no opportunity to view the kindergarten rooms. You will need to bring your child's original birth certificate, proof of residency, and immunization records. These documents are required by law.

If you have questions, please contact the district nurse at (714) 990-7868.



## Take a Walk and Discover Brea's History

Roll back the clock and take a walk into time on two Saturdays in March. The Brea His-

torical Society will be conducting a series of walking tours, lasting two-hours each, on March 22 and March 29. Interesting narration from guides will reveal some of the stories behind a number of familiar places. These tours will highlight several special homes from the 1920's and take a look at the restoration work on buildings in the Old City Hall Park. In addition, architectural features that echo the past will be observed in the new downtown.

The walking tours will set out at 10a.m. and 2 p.m. on each of these days. Walkers should wear comfortable shoes as the route will cover over a mile and require climbing some steps and hills. They are asked to meet at the Brea Baptist Church at the corner of Flower and Birch Streets thirty minutes ahead of time to sign in, get acquainted and be organized into smaller groups. A donation of five dollars per person will go to the Museum Heritage Fund to assist in the restoration of the Old Police Station Building which will be re-opened as a permanent home for Brea historical artifacts.



The Old Police Station is a stop along the History Walk. It will soon become a museum.

## Garden Compost Giveaway

Brea gardeners can pick up free compost to beautify their gardens and lawns on March 15 at the Brea Community Center beginning at 9:00 a.m. Distribution will continue until 11:30 a.m. or while supplies last.

All compost is from yard waste collected in Brea's curbside recycling program. This effort closes the loop by putting materials back to practical use. Brea Disposal is providing up to 60-pounds of free compost to each resident who brings buckets or other sturdy containers to haul it away. (Plastic garbage bags may not be used.)



For more information, contact Brea Disposal Customer Service Department at (714) 238-2444.

## Tree Grant Helps to Shade and Beautify City Streets

Brea recently received a grant from the California Department of Forestry and Fire Protection through their Urban and Community Forestry Program. To date the City of Brea Maintenance Services department along with the assistance of the California Conservation Corps has planted approximately 300 trees throughout the City.

Sixteen different varieties of trees have been planted based on selections from our Master Street Tree Plan that dictates the appropriate tree for parkway size and conditions. If you have a vacancy near your parkway area and are interested in getting a tree, call Maintenance Services at (714) 990-7691. If a tree is available, they will have it planted.

Residents are asked to take responsibility for watering these new trees to insure they survive while establishing a new root system. Here are some other tips for a healthy parkway tree:

- Young trees need deep watering (slow flow of 10-15 gallons) at least once weekly. Mulch around the base to slow evaporation.
- Take care not to damage trees by cutting into the bark with weed-eaters, shovels or other gardening tools. Create a base area free of turf, flowers, weeds or any kind of paving materials so the roots can breathe.
- Obtain a City permit before removing an existing parkway tree or planting your own variety.

If an established parkway tree has been vandalized, needs a new stake, or has broken limbs, please notify Maintenance Services at (714) 990-7691.



## City Recap

A Review of City Council Actions on Ordinances, Hearings and Contracts

### City Council Meeting of December 2, 2002 through January 21, 2003

#### Council Reorganization

On November 5, 2002, a General Municipal Election was held for the election of three Council Members. There were 8,303 ballots cast at local polling locations and 2,726 absentee ballots cast, for a total of 11,029 votes cast. Elected to the position of Council Member were John Beauman, Roy Moore, and Bill Lentini. At its reorganization meeting of December 2, 2002, the Council selected Bev Perry as Mayor and John Beauman as Mayor Pro Tem for a one-year term.

#### Jail Remodel

The Police Department received a grant to do some upgrading improvements to the jail area in the station. One part of the project was to have the complete interior of the jail repainted. The grant supplied \$43,710 and the project has been completed (not that many of the public will get to see it).

#### NOC Transit Feasibility Study

An agreement was approved with IBI Group to perform a North Orange County Transit Feasibility and Alignment Study. The Cities of La Habra, Brea, Placentia, Yorba Linda and Fullerton are sharing funding of the feasibility study to evaluate transit options for the area. Transit routes, user options and equipment requirements will be evaluated as part of the study, which is supported by OCTA and would lay groundwork for additional, more-detailed studies that may be funded by OCTA in the future. The cost of the study is \$50,000 and each city has committed up to \$10,000 in funding.

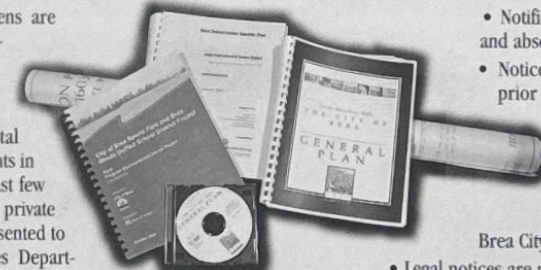
#### Brea Skate Park Sound Wall

The Brea Skate Park was constructed in Arovista Park in mid 2000. In order to mitigate the concerns of the adjacent neighborhood, a 14-foot high, 200-foot long sound wall will be constructed to reduce the noise impact. Construction was scheduled to begin on Monday, February 24, 2003. The project will also include the installation of a drinking fountain. After the wall is constructed, trees will be planted on the west side.

## Public Review Invited On Draft EIR Documents

It is very important that citizens are aware of opportunities for participation with new developments within Brea through the EIR process. Currently there are two Draft Environmental Impact Report (DEIR) documents in public review phases. In the past few years an increasing number of private sector proposals have been presented to the Brea Development Services Department and each time much effort goes into notifications so that citizens can get involved with decision-making.

Each time a Draft EIR is completed, as required by law, a series of notices goes out to invite review of the document and to solicit additional comments from interested parties. At the end of the review period dates are set for open hearings before the Planning Commission and sometimes the City Council who must certify the EIR before any project moves ahead. The following outreach efforts are made so that the public is aware when an EIR is in process.



Planning documents can be quite lengthy. The quickest and easiest way to stay current as new materials are issued is to review DEIR reports and other lengthy legal materials through the website at [cityofbrea.net](http://cityofbrea.net).

**City of Brea General Plan**  
Review Period closes March 17  
Planning Commission Hearing – March 25  
City Council Public Hearing – April 15

**Brea Cañon Estates**  
Review Period closes March 8  
Planning Commission Hearing – April 8  
City Council Public Hearing – to be scheduled

The Brea Ministerial Association in fellowship with The Kiwanis Club of Brea, cordially invite you to

## 22<sup>nd</sup> Annual Mayor's Prayer Breakfast

March 26th • 6:45-8:45 a.m.

Embassy Suites Hotel

Speaker: The Honorable Gaddi H. Vasquez, Director of the United States Peace Corps.



Gaddi H. Vasquez, Director of the U.S. Peace Corps

\$15 per ticket, \$150 per table of ten, reservations are a MUST, no tickets sold at the door.

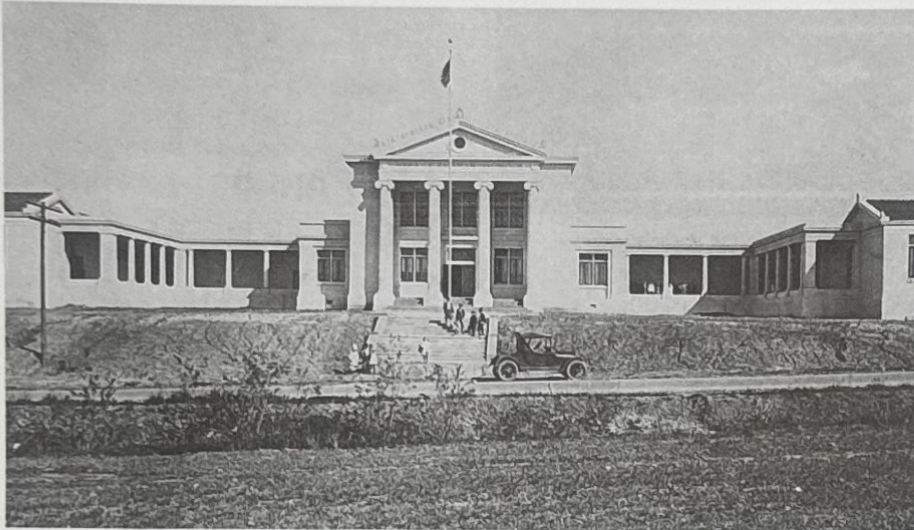
Call 626-964-3257 for information or to make a reservation

## Deadline Approaches for Mayor's Youth Award

High school students who reside in Brea have been contributing thousands of service hours to benefit the community. A special Mayor's Youth Award has been presented over the past five years to recognize the tremendous value of such volunteerism.

Only two months are left for qualifying juniors and seniors to submit tracking forms in order to be among 2003 recipients. The deadline to return approved forms is 5:00 p.m. Thursday, May 1. These are to be mailed or hand-delivered to the Brea Civic & Cultural Center. Juniors need to have completed 120 hours for recognition and seniors must complete 160 hours in order to earn the graduation medallion. Underclassmen are encouraged to continue accumulating hours and getting them signed off on the official tracking form. Nothing needs to be turned in until the end of junior year.

Mayor's Youth Award Program brochures are available through high school counselors or you may phone 990-7799 and request that one be mailed.



## A Proud Tradition – Brea Olinda Unified School District Marks 100 Years of Excellence!

The Brea Olinda Unified School district was originally established as the Randolph School District on March 3, 1903 with a single-room schoolhouse. It had one teacher and 24 students enrolled at Brea Canyon School. Today, the school district has evolved into an award-winning, nine-campus system serving nearly 6,000 students.

In 1989, Fanning Elementary was named the district's first California Distinguished School. Brea Olinda High School became the district's second California Distinguished School in 1991. It was recognized again in 1993 as a National Blue Ribbon School, one of only 18 middle and high schools in California and 260 schools nationwide awarded the prestigious honor that year. In 1998, Olinda School celebrated a century of service to its canyon community and Arovista Elementary was named the district's third California Distinguished School. Brea Olinda High earned Distinguished School Honors for a second time in 1999 and Brea Country Hills Elementary was named a California Distinguished School in 2002.

Congratulations! Our gratitude is in order for this proud tradition of education!

24 ▼

### Keep in Touch with Your City Government...

- ✓ Leave a message on Comment Line 990-7707
- ✓ Send us an E-mail at: [tellus@ci.brea.ca.us](mailto:tellus@ci.brea.ca.us)
- ✓ Check out Brea's Home Page on the World Wide Web: [www.cityofbrea.net](http://www.cityofbrea.net)
- ✓ Drop us a line with a CityGram
- ✓ Call our Public Information Office at 990-7725
- ✓ Brea Civic Center Main Line 990-7600



### Brea Job Center:

Spruce up the yard or tackle home improvement projects with workers available to hire from the Brea Job Center. From housecleaning and landscaping to skilled carpenters, the Brea Job Center can help. Contact the Job Center, Monday through Saturday, 6 to 11 a.m. at 990-6384.

## Tune in to Cable Channel 3

### City Council Meetings

1st & 3rd Tuesday of the month 7 p.m.  
Replays: Monday & Thursday 7:30 p.m.



### Video Brea Line

Monday and Thursday 7 p.m.  
Monday – Sunday 10 a.m.

Find out about events, programs and services in and around Brea.

### Brea Beat

24-hours, seven-days a week (except when pre-empted by program segments)

### Special Programming

Nature, travel, safety-related programming and more!  
*Channel 3 program dates and times may vary. Call 990-7725 for information.*

### Brea City Council

Bev Perry, *Mayor*  
John Beauman, *Mayor Pro Tem*  
Bill Lentini, *Councilmember*  
Roy Moore, *Councilmember*  
Marty Simonoff, *Councilmember*

City of Brea  
Civic & Cultural Center  
1 Civic Center Circle  
Brea, CA 92821

Postal Customer  
Residential/Business  
Brea, CA 92821

PRSR STD  
U.S. POSTAGE  
PAID  
ANAHEIM, CA 92807  
PERMIT NO. 8056



**Brea Historical Society  
Treasurer's Report – October 8, to November 4, 2002**

**Advantage High Yield Account**

Beginning Balance	7,600.71
Deposits	5,625.00
Interest	0.00
Transfer to Checking	0.00
Ending Balance	13,225.71

**Memorial/Museum Account**

Beginning Balance	14,097.65		
Deposits	25,400.00		
Interest	0.00		
Ending Balance	39,497.65		

**Certificate of Deposit**

Beginning Balance	13,365.32		
Current Value	13,365.32		

**Checking Account \***

Beginning Balance	4,302.56		
Total Deposits	416.06		
Transfer from Savings	0.00		
Total Expense	1,961.43		
Ending Balance	2,757.19		

**Outstanding Checks**

#1771	8.75		
#1773	18.56		
#1774	1,875.00		

\*Details of Checking account are attached

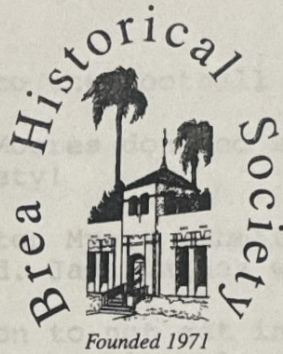
Jim Grosse, Treasurer



**Brea Historical Society**  
**Treasurer's Report – October 8, to November 4, 2002**

**Register Report**  
 10/8/02 Through 11/4/02

Date	Account	Num	Description	Memo	Category	Clr	Amount	
			BALANCE 10/7/02				4,302.56	
10/10/02	BREA HIS...	1770	City of Brea	2 accts	Utilities:Water		-15.04	
10/11/02	BREA HIS...	DEP			Deposit		251.00	
10/17/02	BREA HIS...	1771	Conference of CA Histor...		Membership		-8.75	
10/17/02	BREA HIS...	1772	SCE		Utilities:electricity		-44.08	
10/17/02	BREA HIS...	DEP			Deposit		71.95	
10/22/02	BREA HIS...	DEP			Deposit		30.00	
10/31/02	BREA HIS...	1773	pac tel		Telephone		-18.56	
10/31/02	BREA HIS...	1774	S&L Realators	November	Rentpayment		-1,875.00	
10/31/02	BREA HIS...	DEP	Return Check #1663		Deposit		63.11	
			TOTAL 10/8/02 - 11/4/02				-1,545.37	
			BALANCE 11/4/02				2,757.19	
			INCOME					
			Book				259.80	
			Deposit				63.11	
			Charitable Donations - Cash				3.10	
			Dues				25.00	
			Tax on Purchase				23.41	
			video				41.64	
			TOTAL INCOME				416.06	



BOARD MINUTES  
AUGUST, 2002

Present: Edna Makins, PJ Mansur, Wilma Sauer, Lori Muhovich, Carol Wolfert, Kathy Canon, Jim Schweitzer, John Bickel, Don Schweitzer, and Pat Fox. Paul and Kathy Moore were present also.

Absent: Marie Domenico and Jim Grosse.

The meeting was called to order by President Kathy Canon on August 5, 2002 at 7:00 pm.

Motion to approve the July board minutes. Moved by Wilma Sauer and seconded by PJ Mansur. Passed.

TREASURER'S REPORT: Attached. Filed for audit.

MEMBERSHIP:

NEWSLETTER: Kathy reported that her computer has been down so she had nothing to report as a result.

SPECIAL PROJECTS: Brea Fest will be held Friday evening, August 16th. A work signup sheet was passed around. Motion to spend up to \$11 for a display photo or two. Moved by PJ and seconded by Edna Makins. Passed.

HERITAGE CENTER: John reported that some 700+ invitations have been sent out for the September 12th golf tournament fundraiser.

Don reported that the retrofit plans have been submitted to the city for approval.

OLD BUSINESS: Jim informed the board that the advertisement that will appear in the Brea Olinda football program this coming season has been completed and turned over to Kathy for her computer magic. When she is done it



will be submitted to the football booster club.

NEW BUSINESS: The Moores donated some very nice items to the Society!

Kirsten Myers submitted her <sup>RESIGNATION</sup>resigned from the board. Jana Valdez was appointed in her place.

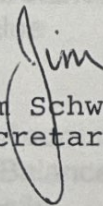
Motion to not get involved in the Boys and Girls Club struggle unless it were ever to involve historic buildings. Moved by PJ and seconded by Lori Muhovich. Passed.

Motion to have Kathy contact the appropriate people to advise them of our decision. Moved by Pat Fox and seconded by Wilma. Passed.

Meeting adjourned at 7:54 pm.

The next board meeting will be Monday, September 9, 2002 at 7:00 pm.

Respectfully submitted,

  
Jim Schweitzer  
Secretary

Certificate of Deposit	
Beginning Balance	12,888.82
Deposit	
Interest	
Ending Balance	13,365.32
Check	
Beginning Balance	519.55
Total Deposits	300.72
Transfer from Savings	2,000.00
Total Expense	2,617.81
Adjustment to Register	12.59
Ending Balance	368.05

Outstanding Checks:  
#1753 63.11  
#1754 1,875.00

\*Details of Checking account are attached

Other Issues:

- Adjustments to checking register due to reconciliation to bank statement.

Jim Grosse, Treasurer



**Brea Historical Society**  
**Treasurer's Report – July 2, to August 5, 2002**

**Advantage High Yield Account**

Beginning Balance	12,566.56
Deposit	0.00
Interest	21.01
Transfer to Checking	2,000.00-
<b>Ending Balance</b>	<b>10,587.57</b>

**Memorial/Museum Account**

Beginning Balance	12,026.94
Deposit	650.00
Interest	9.69
<b>Ending Balance</b>	<b>12,686.63</b>

**Certificate of Deposit**

Beginning Balance	13,365.32
<b>Current Value</b>	<b>13,365.32</b>

**Checking Account \***

Beginning Balance	510.55
Total Deposits	360.72
Transfer from Savings	2,000.00
Total Expense	2,617.81-
Adjustment to Register	12.59
<b>Ending Balance</b>	<b>266.05</b>

**Outstanding Checks:**

- #1753     63.11
- #1754   1,875.00

\*Details of Checking account are attached

**Other Issues:**

- Adjustments to checking register due to reconciliation to bank statement.

Jim Grosse, Treasurer



**Brea Historical Society**  
**Treasurer's Report – July 2, to August 5, 2002**

Register Report  
 7/2/02 Through 8/5/02

Date	Account	Num	Description	Memo	Category	Clr	Amount
			BALANCE 7/1/02				523.14
7/2/02	BREA HIS...	TXFR	Transfer Money		[Advantage High Yield]		1,000.00
7/2/02	BREA HIS...	1745	Foto Hall		Country Fair		-150.85
7/2/02	BREA HIS...	1746	U.S. Postal Service	Jlm Schweitzer	Postage		-37.00
7/2/02	BREA HIS...	1748	U.S. Postal Service		Bulk Mail		-200.00
7/2/02	BREA HIS...	1749	Pacific Video		Video Purchase		-161.63
7/2/02	BREA HIS...	1750	SCE		Utilities:electricity		-41.15
7/2/02	BREA HIS...	1751	City of Brea	2 accts	Utilities:Water		-13.24
7/2/02	BREA HIS...	DEP			Deposit		15.00
7/5/02	BREA HIS...	DEP			Deposit		170.72
7/18/02	BREA HIS...	1752	SCE		Utilities:electricity		-75.83
7/18/02	BREA HIS...	DEP			Deposit		150.00
7/20/02	BREA HIS...	DEP			Deposit		25.00
8/1/02	BREA HIS...	TXFR	From High Yield	08/01/02	Transfer		1,000.00
8/1/02	BREA HIS...	1753	Staples	07/20/02	Misc.		-63.11
8/1/02	BREA HIS...	1754	SL Realty Partners	August	Rentpayment		-1,875.00
			BALANCE 8/5/02				266.05
			INCOME				
			Book				25.98
			Charitable Donations - Cash				60.97
			Dues				215.00
			Picture				18.56
			Post Card				20.30
			Tax on Purchase				5.99
			Transfer				2,000.00
			video				13.92
			TOTAL INCOME				2,360.72

Meeting adjourned at 7:50 pm.

BREA HISTORICAL SOCIETY  
BOARD MINUTES

The next board meeting is on Monday, November 4, 2002  
at 7:00 pm.

Present: Don Schweitzer, Kathy Canon, Jim Grosse, Jim Schweitzer,  
Respectfully Wilma Sauer, PJ Mansur, Carol Wolfert, and Jana Valdez.  
Brian Saul was a visitor.

Absent: Lori Muhovich, Edna Makins, Pat Fox, John Bickel, and  
Marie Domenico.

Jim Schweitzer  
Secretary

The meeting was called to order by President Kathy Canon on  
Monday, October 7, 2002 at 7:00 pm.

Motion to approve the September board minutes. Moved by Don  
Schweitzer and seconded by Wilma Sauer. Passed.

TREASURER'S REPORT: Attached. Filed for audit.

SPECIAL PROJECTS: The Annual Meeting is scheduled for Tuesday,  
January 28, 2003 at the Brea Senior Center.

Jim Schweitzer will attempt to get half of the  
evening's program, which would be a display of  
the 1920's Brea bank notes courtesy of Dwight  
Manley. Kathy will check into arranging a panel  
remembrance, of sorts, with some oldtime Breans.

MUSEUM & HERITAGE CENTER: Seven, of nine, prizes for the golf  
tournament have been returned, as  
requested.

Don reported that plans have been submitted  
to Richard Mitchell and constructive  
might very well begin in about two months!

OLD BUSINESS: The subject of the by-laws was brought up and it  
was decided to hold a special meeting later in the  
month to review and decide what course to take to  
have them cleaned up and revised.

NEW BUSINESS: Motion to appoint Jana Valdez as the Chairperson  
of the project of placing markers on homes. Moved  
by Don and seconded by Jim Grosse. Passed.

The approximate cost will be \$110, of which the  
BHS will receive \$20 per home.

ANNOUNCEMENTS: Brian Saul reported on two topics of interest. One,  
is that the new subdivision in northwest Brea will  
have a number of streets named after past residents.  
Also, there will be a series of historic markers  
placed on the sidewalks along the Birch Street  
Promenade.

Meeting adjourned at 7:50 pm.

The next board meeting will be held on Monday, November 4, 2002  
at 7:00 pm.

Respectfully submitted,

Advantage High Yield Account

Beginning Balance	7,587.57
Deposits	0.00
Interest	13.14
Transfer to Checking	00
Ending Balance	7,600.71

*Jim*  
Jim Schweitzer  
Secretary

Memorial/Museum Account

Beginning Balance	12,989.89
Deposits	1,100.00
Interest	11.02
Ending Balance	14,097.65

Certificate of Deposit

Beginning Balance	13,365.32
Current Value	13,365.32

Checking Account \*

Beginning Balance	702.69
Total Deposits	5,650.00
Transfer from Savings	0.00
Total Expense	2,050.00
Ending Balance	4,302.69

Outstanding Checks

#1753	63.11
#1767	24.51
#1768	44.92
#1769	1,255.00

\*Details of Checking account are attached

Jim Grosse, Treasurer



**Brea Historical Society**  
**Treasurer's Report – September 3, to October 7, 2002**

**Advantage High Yield Account**

Beginning Balance	7,587.57
Deposits	0.00
Interest	13.14
Transfer to Checking	.00
Ending Balance	7,600.71

**Memorial/Museum Account**

Beginning Balance	12,986.63
Deposits	1,100.00
Interest	11.02
Ending Balance	14,097.65

**Certificate of Deposit**

Beginning Balance	13,365.32
Current Value	13,365.32

**Checking Account \***

Beginning Balance	702.59
Total Deposits	5,650.00
Transfer from Savings	0.00
Total Expense	2,050.03
Ending Balance	4,302.56

**Outstanding Checks**

#1753	63.11
#1767	24.51
#1768	44.92
#1769	1,875.00

\*Details of Checking account are attached

Jim Grosse, Treasurer



**Brea Historical Society**  
**Treasurer's Report – September 3, to October 7, 2002**

**Register Report**  
 9/2/02 Through 10/7/02

Date	Account	Num	Description	Memo	Category	Clr	Amount	
			BALANCE 9/1/02				702.59	
9/15/02	BREA HIS...	1765	SCE		Utilities:electricity		-92.36	
9/15/02	BREA HIS...	1766	City of Brea	2 accts	Utilities:Water		-13.24	
9/30/02	BREA HIS...	DEP			Deposit		5,650.00	
9/30/02	BREA HIS...	1767	pac tel		Telephone		-24.51	
9/30/02	BREA HIS...	1768	Staples		Misc.		-44.92	
9/30/02	BREA HIS...	1769	S&L Realators	October	Rentpayment		-1,875.00	
			BALANCE 10/7/02				4,302.56	
			INCOME					
			Dues		25.00			
			Rentpayment		5,625.00			
			TOTAL INCOME		5,650.00			
			OVERALL TOTAL		5,650.00			

## PLAQUES IN THE NEW DOWNTOWN

### **THESE CAN BE PLACED AT ANY LOCATION:**

1. The first low-winged monoplane in the U.S., named the "Humming Bird," was built in 1925-26 at 120 N. Pomona Ave. (now Brea Blvd.)
2. Babe Ruth and Walter Johnson played in a baseball exhibition game here in Brea on Halloween Day, 1924.
3. Brea's official city tree is the pepper tree. Its flower is the red rose.
4. In 1932 the first official radio equipment was installed in Brea police cars.
5. Brea Blvd. (Pomona Ave.) was paved for the first time from curb to curb in 1922.
6. More than 200 Brea streets are named after trees or plants.
7. Brean Paul Moore set the world's record in 1940 for the 3/4 mile at 2.58.7, an official record that still stands.
8. At the turn of the 20th Century, Basque farmers and shepherders owned or leased much the land where Brea now stands.
9. During WW II German prisoners of war helped to harvest the local citrus crop.
10. In 1952 Vice Presidential candidate Richard Nixon made a campaign speech in old City Hall Park.
11. From the late 1950's to 1971 Brea was protected from enemy missile attack by the Nike Missile Base in the hills above the city. Some missiles were even equipped with nuclear warheads.
12. The name "Brea" means tar in Spanish, and Indians gathered it here to use as medicine and to waterproof their baskets.
13. Originally called Pomona Ave., Brea Blvd received its name on July 1, 1960.
14. Brea in the mid-20's had its own airport just northeast of the current intersection of Kraemer and Imperial Hwy. In 1918 there was also a landing strip alongside So. Brea Blvd.
15. The first successful oil well in the Los Angeles Basin was drilled in the hills above Brea in 1885.
16. After the big 1933 Long Beach Earthquake, many of its victims were temporarily housed here in Brea.
17. The first baby born in Brea was Lois Adams - April 20, 1911.



19. With a population of 732, Brea became an official city of Orange County on Feb. 23, 1917.
20. On their way north to Monterey, the famous Spanish explorer Gaspar de Portola with his 63 men camped in Brea Canyon on July 29, 1769.
21. Brea's first street lighting was installed in 1917.
22. Surrounding Brea at one time were the world's largest orange, lemon and avocado groves.
23. During WWII, from a look-out hut atop old Brea-Olinda High School on Birch St., teams of volunteers scanned the skies for enemy planes.
24. As the only Breans of Japanese descent, the Hiroo Kitaoka family was deported from Brea in early 1942 and placed in an internment camp.
25. Ten days after the Dec. 7, 1941 attack on Pearl Harbor, Brea had its first city-wide "blackout," all town lights having to be extinguished.
26. Brean Vic Auer won two Olympic Silver Medals for marksmanship, one at Munich in 1972 and the other in Montreal in 1976.
27. Two-time holder of the national high jump championship with an all-time record of 7' 8 3/4", Brean Norquist ranked third in the world for this sport in 1986.
28. Winner of the prestigious Cy Young Award in 1976, former San Diego Padres pitcher Randy Jones got his start playing ball for Brea-Olinda High School.
29. Early baseball Hall of Fame inductee Walter Johnson lived his early years in the oil settlement of Olinda, now a part of Brea.
30. Brean Cruz Reynoso was appointed California Supreme Court Justice in 1981, the first Hispanic member to serve on the Court.
31. Brea singer, songwriter and guitarist James Hetfield of the popular heavy-metal rock band Metallica was the winner of several Grammy Awards.
32. Compulsory driver education and training courses for 16-year olds seeking a license was an idea born in Brea and signed into law by the governor in 1947. Other states soon followed California's lead.
34. On January 11, 1949, Breans woke up to find snow covering the city and its hills. By noon though most of it had melted away, except in Carbon Canyon where it lasted until the following day.
34. On the morning of April 8, 1926 lightning struck two huge 750,000-barrel tanks of crude oil at Brea's Stewart Tank Farm which both exploded in huge fireballs of flame. It's said that pieces of their wooden roofs fell as far east as Carbon Canyon and Chino. The huge fire burned for a week making it possible to read a newspaper on Brea Blvd at 3 a.m.

## **SITE-SPECIFIC PLAQUES**

**1. (On the southwest corner of Brea Blvd. and Birch -in front of "Eddie Bauer Bldg.")**

Since 1911, 4 different buildings have occupied this site: an ice and meat market from 1911-13, a church from 1913-27, a bank building 1928-1992, and this building, constructed in 2000.

**2. (In front of the theater closest to Brea Blvd.)**

Brea's first movie theater, the Red Lantern, opened in 1922 with music, a big celebration, vaudeville and its first film, "A Game Chicken," starring Bebe Daniels.

Fourteen year old Judy Garland, whose uncle ran the theater, made 2 guest appearance there, one in the early 30's as part of the Gumm Sisters act and another in 1938.

**3. (In front of one of the 2 theaters)**

In the 1970's, famed movie director, screenwriter and producer James Cameron worked for the Brea-Olinda School District as a food service delivery truck driver.

**4. (In front of one of the 2 theaters)**

Popular 1950's deep-voiced child actor George "Foghorn" Winslow, who starred in several films, including ones with Marilyn Monroe, Cary Grant, Dean Martin and Jerry Lewis, etc., lived right across from old City Hall Park.

**5. (In the brick paseo between Old Navy and Clothestime)**

These bricks are from the Sewell Building, built just across the street in 1913 where the parking structure now stands. It was the site of Brea's first city hall from 1917 until 1928.

**6. (On Brea Blvd. about 50 feet south of the entrance to Eddie Bauer....see me)**

On this spot in 1938 the La Vida bottling plant began making a popular soft drink called "Lime 'n Lemon," using the natural spring water from Carbon Canyon.

**7. (About the middle of Super Block 2 - east side ----see me)**

At this site in 1921 Brea pioneer Isaac Craig built the 2-story Craig Building, with stores below and a large meeting room upstairs. His son, Ted Craig, served as Brea's mayor, was elected 5-times State Assemblyman and was chosen by his peers as California Assembly Speaker in 1935. Craig Park is named in his honor.

**8. (On Birch St., just behind Old Navy----see me)**

In a tiny building on this site in 1925 was Brea's first telephone exchange in which several female operators manually took and transferred calls. It wasn't until 1948 that direct dial telephoning came to Brea.

9. Plaque at Brea Sign  
10. Plaque at old clock



**BREA BY DESIGN ♦ THE DOWNTOWN CHARETTE**

# LETTER FROM THE CITY COUNCIL

October 6, 1989

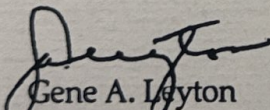
*Dear Charette Participants:*

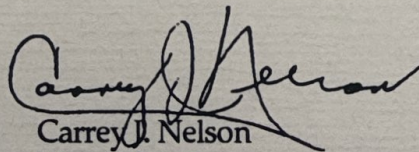
Welcome to "Brea By Design ... The Downtown Charette!" You will be a participant in a very exciting process to create a vision for our Downtown. Brea residents, organizations, business people, elected officials, developers, and our staff will work together to form this vision.

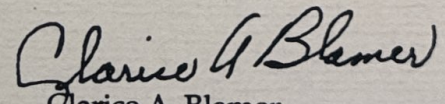
To start, we will find out what others are doing to revitalize their downtowns and what our own opportunities and constraints are. An "Awareness Tour" will help us form visual impressions of our core downtown area. We will then share and form our ideas in small groups and large groups. Our Resource Team will finally expand and refine our ideas and resolve any remaining issues. The resulting "Vision Document" will guide the development of our Downtown. You are all invited to the unveiling of this Vision Document at a reception on November 29.

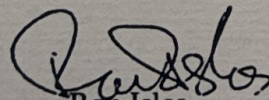
Your participation in this process is an integral part of helping us plan for our future. The City Council is appreciative of your time and energy devoted to this endeavor.

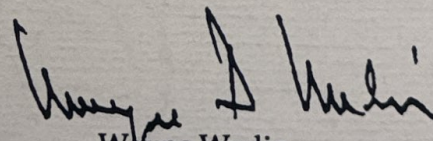
Sincerely,

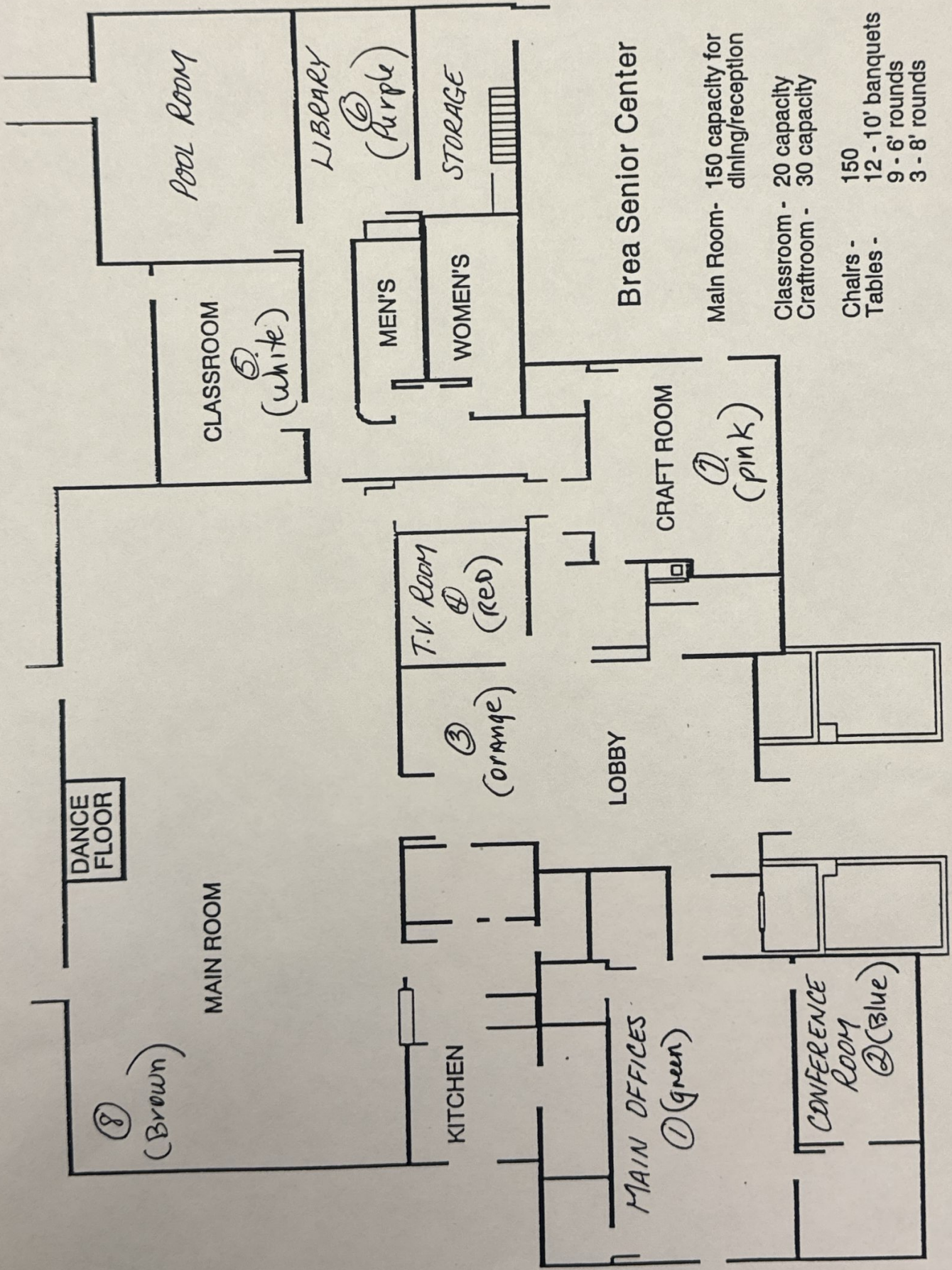
  
Gene A. Layton  
Mayor

  
Carrey J. Nelson  
Mayor Pro Tem

  
Clarice A. Blamer  
Councilwoman

  
Ron Isles  
Councilman

  
Wayne Wedin  
Councilman



**Brea Senior Center**

- Main Room - 150 capacity for dining/reception
- Classroom - 20 capacity
- Craftroom - 30 capacity
- Chairs - 150
- Tables - 12 - 10' banquets, 9 - 6' rounds, 3 - 8' rounds

BREA BY DESIGN  
THE DOWNTOWN CHARETTE

Major Market Findings:

- Brea population growth has been slowing (1% or 350 people/year) but is expected to pick up again in the near future (3% or 1,000/year).
- Employment growth has been slightly higher than the County (2% or 400 jobs/year) and is projected to grow twice as fast (3% or 900 jobs/year) by 1995.
- Brea has had very strong job growth relative to population growth. The City has added almost .6 additional jobs for each additional person since 1985 -- twice what is required for balanced growth.
- For sale residential development has accounted for an average of 112 additional units each year in the City. The majority (80%) have been single family attached units. Selling of new residential units in the City has been restricted by lack of supply rather than demand. The study area could absorb approximately 400 attached units during the next five years.
- The City has added only an estimated 100 rental units each year since 1984. Current vacancy rates in apartment projects in the City average under 2%. A strong potential exists for 200 rental units in the City today with an additional 300 to 400 units within the next five years.
- Existing competitive retail is largely located in small neighborhood and convenience centers. These centers are either new and under 20,000 square feet or older, sometimes renovated, 30,000 to 60,000 square feet. Opportunities exist for home improvement, limited price variety, drug stores and food service, including dinner houses and coffee shops. Median household income is \$47,000. There is currently sufficient demand to support 12 to 20 acres of retail development in the central city area, net of proposed retail and regional mall expansions currently ongoing.
- The office market in Brea is concentrated adjacent the 57 freeway and Imperial Highway. These projects compete with office development throughout northern Orange County. Countywide vacancy has remained at 25% for the past two years, and given projects in planning, is likely to remain soft for the coming 24 to 36 months. Larger office projects in Brea are affected by this chronic high vacancy and the competitive market throughout northern Orange County. Office projects immediately adjacent the Study area fare slightly better than the general market with a 19% vacancy rate, however, the office market is still considered competitive and absorption is likely to be slow in the Study area. During the next five years some 5 to 7 acres of office development could be absorbed in the study area.

# WHAT IS A CHARETTE?

## A Message from Agency Director Frank Benest

***“What the heck is a charette?”***

A “charette” is a ... a) half a charade                      b) a foreign car  
c) cheap French perfume                      d) none of the above

The correct answer is “none of the above.” Rather, a charette is a fancy term for a time-limited process that brings outside planning, design and architectural professionals to a particular site to work on a design problem. The City Council wants to use these outside professionals as a resource group for the Brea community as we ourselves design an exciting and vital, yet practical vision for our downtown. The vision created by the charette process is intended to guide the future revitalization of our downtown area.

The City Council plans to hold the charette over a 2 ½-day period in early Fall. The Council wants to involve downtown residents and merchants, Historical Society members, Planning Commissioners, Chamber of Commerce members, and representatives from other civic groups in helping create this vision. The outside multi-disciplinary resource group will involve an urban planner, an architect, a traffic

engineer, a landscape architect, and an economist.

The charette will begin with a welcoming session at which the outside resource team will describe how other communities have revitalized their downtowns. The charette will also include a downtown “awareness walk” during which participants will focus on unique downtown features, issues and opportunities. After the walk, community representatives will participate in several workshops to provide their perspectives on possible futures for the downtown area. Finally, the outside resource team will analyze and summarize community input and create a vision statement to be subsequently presented to the City Council and the community-at-large.

The downtown is the heart and soul of Brea. The charette is a creative way of helping the community forge a vision of what downtown can become.

# OTHER PARTICIPANTS

## Developers

### *Alexander Haagen Company*

Lance Aamot  
Rick D'amato  
Chris Fahey

### *Trammell Crow*

Emilio Arechaederra  
Herb Horowitz  
Bill Schrader

### *Watt Commercial Development*

Tom Craig  
Al Cruz  
John Hunter  
Ron Phadnis  
Bill Watt

## Press

### *Daily Star Progress*

Kelly Barron

### *Orange County Register*

Luis Zaragoza

## Program/Core Staff

Frank Benest, City Manager  
Jim Cutts, Dev. Svs. Dir.  
Sue Georgino, Redev. Svs. Dir.  
Denise Ovrom, Asst. City Manager

*Continued*



# OTHER PARTICIPANTS

## Facilitators

Rad Bartlam

**City Planner**

*City of Brea*

Rich Holmer

**Human Services Director**

*City of Colton*

Linda Malzek

**Housing & Grants Administrator**

*City of Burbank*

Brian Oulman

**Senior Planner**

*Colton Redevelopment Agency*

Rick Pruetz

**City Planner**

*City of Burbank*

Rob Quigley

**Rob Wellington Quigley Architects**

Andy Spurlock

**Spurlock Office**

Jennifer Thornberry

**Economic Development Director**

*City of Colton*

*Continued*

# OTHER PARTICIPANTS

## Tour Guides/Recorders

Mike Afram, Admin. Intern - Redevelopment  
Gloria Edwards, Admin. Asst. - Redevelopment  
Mike Kamino, Sr. Planner - Development Svcs.  
Martha Lasser, Admin. Asst. - Redevelopment  
Chris Lissik, Project Coordinator - Redevelopment  
Pat Shoemaker, Sr. Planner - Development Svcs.  
Pam Tarlow, Admin. Asst. - Development Svcs.  
Terry Williams, Admin. Asst. - Redevelopment

## Media Services

Laurie Cottrell, Asst. to City Manager  
Mike Maxfield, Public Information Officer  
Scott Pettinger, Media Services Specialist  
Glenn Ross, Century Cable

## Other Staff

Roger Friesen, Asst. Development Svcs. Dir.  
Kellee Fritzal, Admin. Intern, Community Svcs.  
Alan Lawson, Asst. Planner, Development Svcs.  
Jennifer Lilley, Admin. Intern, Development Svcs.  
Brent McManigal, Admin. Intern, Development Svcs.  
Sam Peterson, City Engineer, Development Svcs.  
Barbara Powers, Secretary, Redevelopment Svcs.  
Jan Ross, Secretary, Development Svcs.  
Kerry Sharman, Secretary to City Manager  
Warren Siecke, Traffic Engineer, Development Svcs.  
Jackie Spatafora, Admin. Clerk, Deveopment Svcs.  
Doug Stevenson, Admin. Asst., City Manager's Office  
Deni Tidland, Admin. Asst., Community Svcs.  
Nancy Whitehouse, Deputy City Clerk

# THE CHARETTE RESOURCE TEAM

**JAMES A. CLOAR**, *Principal*

Land Design/Research Inc.  
Columbia, Maryland

**J**im Cloar focuses on strategies for comprehensive urban problem solving, applying his long experience in directing and carrying out planning, development, and management programs for downtowns and urban districts.

He has an extensive background as staff and consultant to non-profit planning and development associations. He places particular emphasis on implications for day-to-day implementation, including work programs, organizational arrangements, political feasibility and community impacts.

An experienced facilitator, he has led strategic planning sessions and community workshops throughout the U.S. as well as in Canada and the United Kingdom. He has written about and produced seminars on downtown development, retail revitalization, and management of downtown and growth center associations.

Previous to joining LDR, he was Executive Vice President of the Urban Land Institute, a non-profit research and education organization. ULI publications and seminars are considered leaders in addressing topical land use and development issues.

From 1977 to 1985, Mr. Cloar was President of the Central Dallas Association, a private sector organization focusing on the downtown and surrounding area. CDA functions included planning and research, advocacy, development support, and special events. Among specific projects were management of the Dallas Arts District, formulation of plans for CBD Streetscape and Pedestrian Walkways, and development of a detailed downtown data base.

Earlier, he was Vice President of Planning and Urban Design for HTB, Inc., an Oklahoma-based consulting firm. In addition to his administrative duties, his projects included Tulsa's downtown pedestrian mall and the Oklahoma State Capitol Complex Master Plan.

Mr. Cloar is a past Chairman of the International Downtown Association and a member of the Urban Land Institute, American Planning Association, American Institute of Certified Planners, and Lambda Alpha. He received a Bachelor's Degree in Civil Engineering and a Master's in Regional and City Planning, both from the University of Oklahoma.

# THE CHARETTE RESOURCE TEAM

**TERENCE W. AUSTIN, *Principal***

**Austin-Foust Associates  
Santa Ana, California**

**M**r. Austin is a principal with the transportation consulting firm of Austin-Foust Associates. He has been involved in transportation planning for 25 years, principally in California, but also in other parts of the country and in Europe.

His educational background includes degrees in engineering, mathematics, transportation, and he also has a business administration degree from UC Irvine. Prior to 1970 he was a consultant in Europe, participating in major transportation studies in London and Copenhagen. He then worked in San Francisco for eight years as a transportation consultant, and was involved in a variety of planning projects, including studies for BART.

For the past 10 years, he has been a transportation planning consultant in Orange County. He is actively involved in traffic planning work for the cities of Irvine, Newport Beach, Orange, Tustin and Santa Ana, and also for the county of Orange and other areas in Southern California. Among his specialties is analyzing traffic shares for transportation improvement financing, and he had a major role in preparing the Foothill Circulation Phasing Program in South Orange County.

# THE CHARETTE RESOURCE TEAM

## **DONN LOGAN, FAIA, *Principal***

**ELS/Elbasani & Logan Architects  
Berkeley, California**

### *Career Profile*

**D**onn Logan is a founding partner of ELS/Elbasani & Logan Architects. Over the past twenty years, he has been Principal-in-Charge of many civic and institutional projects, including the headquarters building for the University of California Press, recreational facilities on the Stanford campus, Cal Poly, and two University of California campuses, an energy efficient office building in San Jose for the State of California, energy efficient housing for U.S. Embassy staff in Manila, and the new Center for the Performing Arts in Portland. Currently, Mr. Logan is designing the renovation of the Josephine D. Randall Junior Museum in San Francisco.

Mr. Logan has directed most of the planning and urban design work of the firm including downtown planning studies for several American cities such as Phoenix, Arizona; Glendale and Concord, California; and Portland, Oregon. He has recently completed the urban design plan for the Mission Bay area of San Francisco.

From 1966 to 1986, he served as Professor of Architecture at the University of California, Berkeley. In addition to teaching graduate studies in urban planning and design, he has written numerous articles including "Anatomy of Mixed Use", published in *Progressive Architecture* and "Housing and Urbanism" a chapter in *The Form of Housing*, Sam Davis, Editor. Mr. Logan is co-author of *American Urban Architecture: Catalysts in the Design of Cities*, released by the University of California Press in early 1989.

### *Education*

Mr. Logan received a Bachelor of Architecture degree from Arizona State University with distinction in 1962, and a Master of Architecture in Urban Design from Harvard University in 1965.

### *Professional Registrations*

Mr. Logan is registered to practice architecture in California, Arizona, New York, Hawaii, Oregon, Pennsylvania, Colorado, and Texas; he is also certified by NCARB.

### *Relevant Experience*

- Long Range Development Plan, U.S. Embassy sites in Seoul and Manila
- Phoenix Downtown Plan, Phoenix, Arizona
- Stanford University Athletic Regions Master Plan, Palo Alto, California
- Anaheim Urban Design Plan, Anaheim, California
- Student Housing, Defense Language Institute, The Presidio, Monterey, California
- Concord Downtown Urban Design Plan, Concord, California
- Long Beach Downtown Plan, Long Beach, California

# THE CHARETTE RESOURCE TEAM

## **ROB WELLINGTON QUIGLEY, AIA, *Principal***

Rob Wellington Quigley Architects  
San Diego, CA

**R**ob, a native Californian, served as a Peace Corps Architect in Chile after his graduation from the University of Utah in 1969. He has been active with his own firm since 1974 and recently won his thirtieth award for design excellence from the American Institute of Architects.

*Esquire Magazine* featured Rob as the "Best of the New Generation" of men and women under forty who are "changing America". He was also one of twelve architects chosen to represent the "cutting edge" of California design by the La Jolla Museum of contemporary Art. The Architectural League of New York selected Rob for inclusion in their "Forty Under Forty" exhibition described as "an American profile of the next generation, people predicted to be influential forces in design." *Global Architecture*, an international journal, devoted forty pages to Rob's San Diego projects. He has presented several papers on energy conservation in architecture, juried numerous Honor Award programs and lectures both here and abroad. Rob's work is regularly featured in local, national and international publications.

Urban planning through grassroots community participation is of special interest to the firm. Consensus-building workshops have resulted in successful master plans and commercial revitalization strategies for several communities. Rob's award-winning work includes the Coronado Downtown Design Guidelines and the El Cajon Boulevard Design Study.

# THE CHARETTE RESOURCE TEAM

## ANDREW SPURLOCK, *Principal*

Spurlock Office  
San Diego, California

Andrew Spurlock has had responsibility for some of the largest and best known projects in Southern California. He has twelve years of experience with a strong background in development planning and design as well as community planning. This plays a key part in his ability to create plans which are both exciting and achievable. He has managed and coordinated several complex public/private design projects including Phase One of the largest development project in California - **California Plaza at Bunker Hill** in Los Angeles. Mr. Spurlock received the American Society of Landscape Architects National Merit Award for San Diego's **Florida Canyon Master Plan** in 1977 and a Chapter award for the **Design Study of El Cajon Boulevard** in 1986. He received an American Institute of Architects President's Citation in 1985 for helping to organize the Community Design Assistance Team for Normal Heights fire victims in San Diego.

He has been instrumental in designing and gaining approvals for numerous community revitalization projects throughout Southern California including downtown and beach areas, during his four years as a Partner at Land Studio, and with past experience at POD, Inc. and SWA Group. He also has a significant background in participatory planning of mixed-use projects such as **Glorietta Bay** in Coronado, the **Mid-City Parking Analysis** for San Diego, and the **Ocean Beach Commercial Revitalization Study**. Many of these projects have been, or are in, the process of being implemented.

### *Education*

University of Michigan, Ann Arbor  
Master of Landscape Architecture, 1975  
Alumni Award  
School of Natural Resources Scholarship  
Teaching Fellowship in Recreation Planning

Case Western Reserve University, Cleveland  
Bachelor of Arts, Urban and Environmental Studies,  
1970 Cum Laude  
Emphasis on Participatory Planning

Registered Landscape Architect (California #1865)

# PROGRAM: AT A GLANCE

*Friday, October 6 — Civic & Cultural Center (Plaza Level)*

## *The Kick-Off*

6:45 p.m.	Registration and Light Buffet	
7:40 p.m.	Welcome and Introduction of Council	Gene Leyton, Mayor
7:45 p. m.	Review of Charette Purpose and Agenda	Frank Benest, City Manager
7:50 p.m.	Presentation — “Revitalizing Downtowns Across the Country”	Robert McNulty, Pres., Partners for Livable Cities
8:30 p.m.	Slide Show — “What Makes a Successful Downtown?”	Jim Cloar, Land Design Research, Inc.
9:00 p.m.	Stretch Break	
	Givens and Constraints	
9:10 p.m.	• Public Improvements and Developments Underway	Frank Benest, City Manager
9:25 p.m.	• Market Research	Matt Disston, Pres., Research Network
9:50 p.m.	Review of Saturday’s Program and Ground Rules	Jim Cloar, Land Design Research, Inc.
10:00 p.m.	Adjourn	

*Continued*



*Saturday, October 7 — Senior Citizen Center/Pioneer Hall*

*Community Vision-Building Session*

- 8:00 a.m. Continental Breakfast (Pioneer Hall) and  
"Awareness Tour" of Downtown
- 8:15 a.m. Buses Leave for Awareness Tour of  
Downtown
- 10:00 a.m. Return to Pioneer Hall and Contribute to  
"Impression Board"
- 10:15 a.m. Small Group Workshops — "Creating a  
Vision for Downtown"
- 11:45 a.m. Workshops Report to Large Groups  
(Groups 1-4, Senior Center; Groups 5-8,  
Pioneer Hall)
- 12:15 p.m. Light Lunch (Pioneer Hall)
- 1:00 p.m. Small Group Workshops
- 3:00 p.m. Workshops Report to Large Groups  
(Groups 1-4, Senior Center; Groups 5-8,  
Pioneer Hall)
- 3:45 p.m. Summary of Issues of Consensus and  
Non-Consensus  
(Total Group meets in Senior Center)
- 4:10 p.m. Follow-Up Steps
- 4:15 p.m. Adjourn

*Thank you for your participation!*

# THE DESIGNERS

Organization: Curt Larsen Real Estate  
Contact: Craig Allred  
114 E. Birch, Ste. A  
Brea, CA 92621

Organization: Curt Larsen Real Estate  
Contact: Gordon Allred  
114 E. Birch, Ste. A  
Brea, CA 92621

Organization: Andrews/Rothenburger  
Contact: Ross Andrews  
3710 Susan St., Ste. 250  
Santa Ana, CA 92704

Organization: Unocal Research Center  
Contact: Janice Audiss  
3020 Saturn St., Ste. 203  
Brea, CA 92621

Organization:  
Contact: David Behoteguy  
1395 Hazelwood Pl.  
Brea, CA 92621

Organization:  
Contact: Patricia Billeaudeau  
245 Lilac Lane  
Brea, CA 92621

Organization:  
Contact: Dori Breshears  
540 N. Brea Blvd., #11  
Brea, CA 92621

Organization:  
Contact: Barbara Brown  
P.O. Box 5490  
Brea, CA 92622-9926

Organization: Masons Citrol Lodge  
Contact: James Burbidge  
1101 Steele Drive  
Brea, CA 92621

Organization:  
Contact: Mae Burt  
314 Alder  
Brea, CA 92621

Organization: Soroptimist International  
Contact: Elaine Capps  
246 St. Crispen  
Brea, CA 92621

Organization: Rotary Club  
Contact: Joe Carpello  
324 S. Brea Blvd.  
Brea, CA 92621

Organization:  
Contact: Carl Clausen  
1655 Sandalwood  
Brea, CA 92621

Organization:  
Contact: Michael Cohen  
560 Bonita Cyn Way  
Brea, CA 92621

Organization: Brea Summit Association  
Contact: Barbara Colgen  
865 E. Davidson St.  
Brea, CA 92621

Organization: Youth Representative  
Contact: Carrie-Anne Combs  
219 N. Thistle  
Brea, CA 92621

Organization:  
Contact: Carol Cooley  
208 St. Crispen  
Brea, CA 92621

Organization: Brea Foundation  
Contact: Greg Davies  
933 N. Forbes  
Brea, CA 92621

Organization:  
Contact: Tammie Davies  
933 No. Forbes  
Brea, CA 92621

Organization:  
Contact: Pat Davis  
P.O. Box 472  
Brea, CA 92622-0472

Organization:  
Contact: Tom Davis  
801 Lime  
Brea, CA 92621

Organization:  
Contact: Marianne Dazzo  
3066 No. Maple  
Fullerton, CA 92635

# THE DESIGNERS

**Organization:**

**Contact:** Harry Delkeskamp  
1420 La Serena Dr.  
Brea, CA 92621

**Organization:** Economic Devel. Committee

**Contact:** Rod Dickinson  
238 S. Orange Ave., #207  
Brea, CA 92621

**Organization:**

**Contact:** Burnie Dunlap  
122 S. Starflower  
Brea, CA 92621

**Organization:**

**Contact:** Jacque Dunlap  
122 S. Starflower  
Brea, CA 92621

**Organization:** Beautification Committee

**Contact:** Dorothy Durbin  
540 N. Brea Blvd., #17  
Brea, CA 92621

**Organization:**

**Contact:** Mark Edmiston  
306 S. Walnut  
Brea, CA 92621

**Organization:**

**Contact:** Joe Falco  
1037 Steele  
Brea, CA 92621

**Organization:** Brea Historical Society

**Contact:** Inez Fanning  
1018 Eadington Dr.  
Brea, CA 92621

**Organization:** Brea Historical Society

**Contact:** Karl Fanning  
1018 Eadington Dr.  
Brea, CA 92621

**Organization:** Brea Police Athletic League

**Contact:** Tom Flenniken  
2416 Foothill Lane  
Brea, CA 92621

**Organization:** Brea Historical Society

**Contact:** Don Fox  
806 Alder  
Brea, CA 92621

**Organization:** Brea-Olinda High School

**Contact:** Pat Fox  
806 Alder St.  
Brea, CA 92621

**Organization:** Country Club Park Homeowners Assn

**Contact:** Sal Gambina  
2392 Carrotwood Dr.  
Brea, CA 92621

**Organization:** Youth Representative

**Contact:** Janelle Genilik  
Brea-Olinda High School  
Brea, CA 92621

**Organization:**

**Contact:** Michael Gerringner  
275 Valencia  
Brea, CA 92621

**Organization:** Exchange Club

**Contact:** Guy Gilbert, Atty.  
3230 E. Imperial Hwy., #101  
Brea, CA 92621-6721

**Organization:** Kiwanis Club of Brea

**Contact:** Rich Goedl  
501 S. Brea Blvd.  
Brea, CA 92621

**Organization:**

**Contact:** Pamela Grady  
862 Mango St.  
Brea, CA 92621

**Organization:**

**Contact:** Laurette Greaves  
117 S. Brea Blvd.  
Brea, CA 92621

**Organization:**

**Contact:** Seaton Greaves  
117 S. Brea Blvd.  
Brea, CA 92621

**Organization:** American Assn. of Univ. Women

**Contact:** Barbara Grenier  
1011 Birchcrest  
Brea, CA 92621

**Organization:** Chamber of Commerce

**Contact:** Irene Gresick  
Number One Civic Center Circle  
Brea, CA 92621

# THE DESIGNERS

Organization:

Contact: Gail Gruenwald  
820 Palmetto  
Brea, CA 92621

Organization:

Contact: Charles Klobe  
P.O. Box 84  
Brea, CA 92622

Organization:

Contact: Kay Gunterman  
915 W. Teak  
Brea, CA 92621

Organization:

Contact: Dennis Koga  
2233 Shadetree Circle  
Brea, CA 92621

Organization: Hollydale Mobile Home Estates

Contact: Jim Hensel  
5700 Carbon Canyon Rd., #50  
Brea, CA 92621

Organization: MJB Realty

Contact: Jerry Kolb  
200 W. Imperial Hwy.  
Brea, CA 92621

Organization: Lowe Development Corp.

Contact: Brad Hillgren  
145 S. State College, Ste. 145  
Brea, CA 92621

Organization: Brea Theatre League

Contact: Lorena Kolb  
536 Bonita Canyon  
Brea, CA 92621

Organization: Cannings Hardware Store

Contact: June Hills  
100 S. Brea Blvd.  
Brea, CA 92621

Organization: A.A.R.P.

Contact: John Kumbera  
505 Union Place  
Brea, CA 92621

Organization:

Contact: Delaina Hofacre  
195 De Oro Dr.  
Brea, CA 92621

Organization:

Contact: Colleen Larsen  
114 E. Birch, Ste. A  
Brea, CA 92621

Organization:

Contact: David Hopkins  
1201 Tamarack  
Brea, CA 92621

Organization: Curt Larsen Real Estate

Contact: Curt Larsen  
114 E. Birch, Ste. A  
Brea, CA 92621

Organization:

Contact: Dee Imp  
685 S. Brea Blvd.  
Brea, CA 92621

Organization: That Frame Place

Contact: Sue Lavold  
P.O. Box 13  
Brea, CA 92622

Organization: Cultural Arts Commission

Contact: Harold Ivy  
1250 Arrowhead Drive  
Brea, CA 92621

Organization:

Contact: Marta Lopez-Digby  
430 W. Imperial Hwy., #1  
Brea, CA 92621

Organization: Brea-Olinda Board of Education

Contact: Bernie Kilcoyne  
170 W. Forest Place  
Brea, CA 92621

Organization: Lowe Development Corp.

Contact: Rob MacLeod  
11777 San Vincente, Ste. 900  
Los Angeles, CA 90049

Organization:

Contact: Dan King  
546 S. Madrona  
Brea, CA 92621

Organization: Lake Park Mobile Home Comm.

Contact: Jim Madison  
645 View Lake  
Brea, CA 92621

# THE DESIGNERS

**Organization:**

**Contact:** Ray Madsen  
914 Sandra Court  
Brea, CA 92621

**Organization:** Beautification Committee

**Contact:** Suseela Neti  
945 E. Redbud  
Brea, CA 92621

**Organization:** Boys & Girls Club of Brea

**Contact:** Greg Marine  
1211 Fehring Way  
La Habra, CA 90631

**Organization:**

**Contact:** Bill Nevell  
363 Skywood  
Brea, CA 92621

**Organization:**

**Contact:** Paul Marshall  
501 Muirwood Drive  
Brea, CA 92621

**Organization:** Brea Chamber of Commerce

**Contact:** Sherry Norman  
Number One Civic Center Circle  
Brea, CA 92621

**Organization:** Omni Rent-A-Car

**Contact:** Dave Martin  
519 S. Brea Blvd.  
Brea, CA 92621

**Organization:** Brea Chamber of Commerce

**Contact:** Matt Page  
475 W. Capricorn  
Brea, CA 92621

**Organization:** McBride Development Co.

**Contact:** James G. McGrade  
711 W. Lambert  
Brea, CA 92621

**Organization:** North Hills Homeowners Assn.

**Contact:** Glenn Parker  
833 Elk Ridge St.  
Brea, CA 92621

**Organization:** Bandera Estates

**Contact:** William G. McLaughlin  
58 Paseo De Toner  
Brea, CA 92621

**Organization:**

**Contact:** Edward Pawlack  
146 S. Brea Blvd.  
Brea, CA 92621

**Organization:**

**Contact:** Jose Mendez  
316 E. Locust St.  
Brea, CA 92621

**Organization:** Parks, Rec. & Human Serv. Comm.

**Contact:** Bev Perry  
2241 Shadetree Circle  
Brea, CA 92621

**Organization:**

**Contact:** Betty Millen  
420 Poplar  
Brea, CA 92621

**Organization:**

**Contact:** Judy Randlett  
325 Delphia Ave.  
Brea, CA 92621

**Organization:**

**Contact:** Dean Millen  
420 Poplar  
Brea, CA 92621

**Organization:** Brea Women's Club

**Contact:** Isabelle Rhymes  
769 Driftwood  
Brea, CA 92621

**Organization:** La Villa Realty

**Contact:** Gene Mills  
770 S. Brea Blvd., #111  
Brea, CA 92621

**Organization:** Amber Hills Homeowners

**Contact:** Amy Rudd  
1362 Robert Court  
Brea, CA 92621

**Organization:**

**Contact:** Bob Munro  
888 E. Candlewood  
Brea, CA 92621

**Organization:**

**Contact:** Brian Saul  
505 E. Date St.  
Brea, CA 92621

# THE DESIGNERS

Organization: Brea Ministerial Association  
Contact: George Saunders  
408 S. Flower St.  
Brea, CA 92621

Organization: Winding Way Homeowners Assn.  
Contact: Dan Schwartz  
2564 Branch Lane  
Brea, CA 92621

Organization:  
Contact: Don Schweitzer  
673 Buttonwood Dr.  
Brea, CA 92621

Organization:  
Contact: Frank Schweitzer  
673 Buttonwood Dr.  
Brea, CA 92621

Organization:  
Contact: Jose Segura  
211 S. Madrona  
Brea, CA

Organization: Senior Participant Council  
Contact: Catherine Seiler  
412 S. Flower  
Brea, CA 92621

Organization:  
Contact: John Sharp  
307 N. Brea Blvd., #K  
Brea, CA 92621

Organization:  
Contact: Jacob Shin  
1131 Grand Canyon  
Brea, CA 92621

Organization: American Bus. Women's Assn.  
Contact: Marie Sofi  
P.O. Box 1164  
Brea, CA 92622

Organization:  
Contact: Michael Stout  
543 So. Brea  
Brea, CA 92621

Organization: Brea Lions Club  
Contact: Al Tremayne  
241 N. Brea Blvd.  
Brea, CA 92621

Organization:  
Contact: Barbara Vasquez  
1105 N. Coast Hwy., #J  
Laguna Beach, CA 92651

Organization: Brea Sunrise Rotary  
Contact: Horace Vega  
244 S. Brea Blvd.  
Brea, CA 92621

Organization:  
Contact: James Waldron  
691 Oleander St.  
Brea, CA 92621

Organization: Beautification Committee  
Contact: Bob Warren  
2125 Chevy Chase Dr.  
Brea, CA 92621

Organization:  
Contact: Bob Wettlin  
609 N. Olive St.  
Brea, CA 92621

Organization: Republican Women of Brea  
Contact: Carol Wolfert  
623 So. Pine  
Brea, CA 92621

Organization:  
Contact: Ray Wolfert  
623 S. Pine St.  
Brea, CA 92621

Organization: American Assn. of Univ. Women  
Contact: Martha J. Wolking  
980 Ethelinda Way  
Brea, CA 92621

Organization: Brea Foursquare Church  
Contact: Rev. Loren Wood  
318 Lotus Place  
Brea, CA 92621

Organization: Brea Community Hospital  
Contact: Bud Yoakam  
471 W. Lambert, Ste. 105  
Brea, CA 92621

Organization:  
Contact: Jerry Zylla  
623 Magnolia  
Brea, CA 92621

SMALL GROUP WORKSHOPS

GROUP 1 - (GREEN)

**FACILITATOR:** Andy Spurlock  
**RECORDER:** Chris Lissik  
**DESIGNERS:** Craig Allred  
Janice Audiss  
Harry Delkeskamp  
Pat Fox  
Seaton Greaves  
June Hills  
Harold Ivy  
Charles Klobe  
Betty Millen  
Gene Mills  
Suseela Neti  
Dan Schwartz  
Jacob Shin  
Martha Wolking

**SMALL GROUP MEETING ROOM:** Main Office (Senior Center)

**LARGE GROUP MEETING ROOM:** Senior Center (Senior Center)

**TOTAL GROUP MEETING ROOM:** Senior Center

**TOTAL GROUP MEETING ROOM:** Senior Center

SMALL GROUP WORKSHOPS

GROUP 2 - (BLUE)

**FACILITATOR:** Rick Pruetz  
**RECORDER:** Mike Kamino  
**DESIGNERS:** Patricia Billeaudeau  
Elaine Capps  
Rod Dickinson  
Jacque Dunlap  
Dorothy Durbin  
Sal Gambina  
Gail Gruenwald  
Bernie Kilcoyne  
Dennis Koga  
Lorena Kolb  
Sue Lavold  
Bob Munro  
Catherine Seiler  
Michael Stout  
Rev. Loren Wood

**SMALL GROUP MEETING ROOM:** Conference Room (Senior Center)

**LARGE GROUP MEETING ROOM:** Senior Center

**TOTAL GROUP MEETING ROOM:** Senior Center



SMALL GROUP WORKSHOPS

GROUP 3 - (ORANGE)

**FACILITATOR:** Rich Holmer  
**RECORDER:** Gloria Edwards  
**DESIGNERS:** Michael Cohen  
Mark Edmiston  
Guy Gilbert  
Kay Gunterman  
Dave Martin  
Dean Millen  
Bill Nevell  
Matt Page  
Marie Sofi  
Bud Yoakam

**SMALL GROUP MEETING ROOM:** Lobby (Senior Center)

**LARGE GROUP MEETING ROOM:** Senior Center

**TOTAL GROUP MEETING ROOM:** Senior Center

SMALL GROUP WORKSHOPS

GROUP 4 - (RED)

**FACILITATOR:** Rad Bartlam  
**RECORDER:** Martha Lasser  
**DESIGNERS:** Gordon Allred  
Ross Andrews  
Dori Breshears  
Joe Carpello  
Carl Clausen  
Janelle Genilik  
Dan King  
Jerry Kolb  
John Kumbera  
Isabelle Rhymes  
Don Schweitzer  
Barbara Vasquez

**SMALL GROUP MEETING ROOM:** TV Room (Senior Center)  
**LARGE GROUP MEETING ROOM:** Senior Center  
**TOTAL GROUP MEETING ROOM:** Senior Center

SMALL GROUP WORKSHOPS

GROUP 5 - (WHITE)

**FACILITATOR:** Jennifer Thornberry

**RECORDER:** Mike Afram

**DESIGNERS:** David Behoteguy  
Mae Burt  
Carrie-Anne Combs  
Tom Davis  
Marianne Dazzo  
Karl Fanning  
Michael Gerringier  
Barbara Grenier  
David Hopkins  
Colleen Larsen  
Jim Madison  
Paul Marshall  
Bev Perry  
Brian Saul  
Bob Warren  
Ray Wolfert

**SMALL GROUP MEETING ROOM:** Classroom (Senior Center)

**LARGE GROUP MEETING ROOM:** Pioneer Hall

**TOTAL GROUP MEETING ROOM:** Senior Center

SMALL GROUP WORKSHOPS

GROUP 6 - (PURPLE)

**FACILITATOR:** Brian Oulman  
**RECORDER:** Pam Tarlow  
**DESIGNERS:** Mary Albrecht  
Tammie Davies  
Pat Davis  
Burnie Dunlap  
Don Fox  
Laurette Greaves  
Jim Hensel  
James G. McGrade  
William G. McLaughlin  
George Saunders  
Frank Schweitzer  
Carol Wolfert

**SMALL GROUP MEETING ROOM:** Library (Senior Center)  
**LARGE GROUP MEETING ROOM:** Pioneer Hall  
**TOTAL GROUP MEETING ROOM:** Senior Center

SMALL GROUP WORKSHOPS

GROUP 7 - (PINK)

**FACILITATOR:** Rob Quigley  
**RECORDER:** Pat Shoemaker  
**DESIGNERS:** Barbara Brown  
Barbara Colgen  
Joe Falco  
Inez Fanning  
Rich Goedl  
Brad Hillgren  
Delaina Hofacre  
Rob MacLeod  
Ray Madsen  
Sherry Norman  
Glenn Parker  
Edward Pawlack  
Judy Randlett  
Al Tremayne  
James Waldron

**SMALL GROUP MEETING ROOM:** Craft Room (Senior Center)

**LARGE GROUP MEETING ROOM:** Pioneer Hall (Senior Center)

**TOTAL GROUP MEETING ROOM:** Senior Center

**TOTAL GROUP MEETING ROOM:** Senior Center

SMALL GROUP WORKSHOPS

GROUP 8 - (BROWN)

**FACILITATOR:** Linda Malzek  
**RECORDER:** Terry Williams  
**DESIGNERS:** James Burbidge  
Carol Cooley  
Greg Davies  
Tom Flenniken  
Pamela Grady  
Irene Gresick  
Dee Imp  
Curt Larsen  
Marta Lopez-Digby  
Greg Marine  
Jose Mendez  
Amy Rudd  
Jose Segura  
Horace Vega  
Bob Wettlin  
Jerry Zylla

**SMALL GROUP MEETING ROOM:** Main Room (Senior Center)  
**LARGE GROUP MEETING ROOM:** Pioneer Hall  
**TOTAL GROUP MEETING ROOM:** Senior Center



## **The Mission**

The mission of the **Brea Museum and Heritage Center** is the preservation of Brea's rich history and to provide a place for education, research and community gatherings.

To create a facility that encourages students and citizens alike to explore our roots as well as the events and people that helped mold Brea into the city it is today.

To establish a center for inquiry, investigation and scholarly research.



Downtown Brea circa 1918

## **The Brea Museum and Heritage Center**



Make your check payable to:  
**The Brea Historical Society**  
A Non-Profit Organization  
Federal Tax No. 237101540

And mail to:  
Don Schweitzer - Chairman  
**Brea Museum & Heritage Center**  
1400 W. Lambert Rd. Ste. E  
Brea, CA 92821

Phone: 562-690-3229  
Fax: 562-690-2051  
Email: [dschweitzer@prodigy.net](mailto:dschweitzer@prodigy.net)

*"Preserving the past for  
the future"*



## The Concept

Come see what Brea was like in the beginning. Relive the hardships of the Depression or the excitement of watching Babe Ruth hit a home run. Learn about the first low-winged monoplane to fly in the United States or Judy Garland singing in the old Red Lantern Theater. Brea had it all!

Today we have the opportunity to preserve our past for future generations. The Brea Historical Society has entered into a lease with the City of Brea to restore the Old American Legion Building in City Hall Park and turn it into **The Brea Museum and Heritage Center.** This is our chance



Babe Ruth in the famous 1924 exhibition game in Brea.



to not only save this grand old building but preserve history and create dynamic programs and services that benefit all ages of our community. Educational programs will be offered throughout the

year as well as lectures and tours on a variety of local topics. A meeting room with kitchen will be available for groups and organizations that are in need of such a community facility.

**The Brea Museum and Heritage Center** will provide a tangible link to our rich past through an interactive, constantly expanding facility open to anyone with an interest in history.

\*\*\*

## The Opportunity

Because of the hard work and dedication of a few concerned citizens we now have the opportunity to restore and rehabilitate an old masonry building, originally American Legion Post No.181, into a state of the art Museum and Heritage Center. A fifty-year lease has been negotiated with the City of Brea, drawings have been completed and work is scheduled to begin as soon as the necessary funds have been raised. We have already met 75% of our proposed goal through donations from the City of Brea, Unocal Corporation and numerous other businesses and citizens that have stepped forward with their support, but we still need your help in order to make our dream a reality.

## The Benefits

The benefits of giving are numerous. First and foremost you will gain the satisfaction of helping to preserve our cultural resources in a historic, city landmark. Your donation is not only tax deductible but can be named in honor or in memory of someone special. You will help enrich our children's heritage education and create a variety of learning experiences from hands-on exhibits to tours of historic sites around Brea.



Brea's early years

## The Offer

Donations at the following levels will receive recognition from the Brea Historical Society and be listed on a permanent "Wall of Honor" in the Brea Museum and Heritage Center.

\$100 - Friend

\$500 - Supporter

\$1,000 - Sponsor

\$2,500 - Collector

\$5,000 - Archivist

\$10,000 - Educator

\$25,000 - Conservator

\$50,000 - Benefactor

\*\*\*

Also, for \$250 you can "Buy a Tile" and have your name permanently engraved as a donor in the walkway leading up to the front entrance.





# Historical Happenings

A publication of  
the  
Brea Historical Society

Copy Deadline: 1st Friday of the month  
Mailing Deadline: 3rd Friday of the month

VOL. XX, No. 3  
March, 2003

## Another Look at the "Big Game"

by  
Brian Saul

If there's one event in Brea's history people seem to know about it's the time when Babe Ruth and Walter Johnson played ball here in 1924.

I mean, there've been all sorts of articles written about it, a poster was made of shots of the game, and heck, even I made a video about it back in 1992.

So then, why am I writing about it again? Well, I've been doing a lot of checking around and came up with some new information that fills in the story a little bit more.

Actually, the story of that October 31st game began 6 days earlier when Walter Johnson, fresh from his World Series win over the N.Y. Giants two weeks earlier and a visit to President Coolidge at the White House with his team, arrived in Los Angeles with his wife Hazel with the idea of buying a West Coast baseball team.

While there, he agreed to play 3 exhibition games, the first of which on Oct. 26 was in LA against the Vernon Tigers. Walter played on the White King Soap Co. team, and 20,000 people showed up at old Clutes Park to watch him pitch. Among them was Brea Canon Oil Co. founder Edward Doheny, to whom Walter threw the game's ceremonial first pitch.

When the game was over and after Walter had signed lots of autographs, he and Doheny had the chance to talk about the old days when Walter and his family had lived in Olinda, right on Santa Fe Ave. not far from the general store.

The following day, Oct 27, the Johnsons left for San Francisco on business and pleasure, and the day after that he played his second exhibition game across the bay in Oakland in a rain-drenched, near-empty stadium.

Now it was time to head back south to Orange County where Walter would play the third and final game right here in Brea at the Brea Bowl, a natural outdoor amphitheater.

First though, there were personal appearances to make, and one of these was at a dinner at the Anaheim Elks Club.

Joining him were 12 of his former teammates from earlier years when he'd lived in Olinda and played with the Olinda Oil Wells.

Right after the party, a big Halloween parade was held through the streets of downtown Anaheim.

Riding in the lead car as Grand Marshal was Johnson, but stealing part of the spotlight was none other than Babe Ruth, who was on a barnstorming tour of the West Coast with other players and would be facing Johnson the next day in Brea.

Large posters all along the parade route, as well as in Brea, Fullerton, La Habra and other surrounding communities, advertised the big game. Newspapers also ran huge ads and headlines to build up the public's excitement.

October 31, Halloween, the day of the game, and with the sun shining brightly overhead, Ruth, Johnson and the rest of the players made their way to Pioneer Hall for a special lun-

*continued on page 5*



Walter Johnson, Babe Ruth and other players pose before the "Big Game".

# Celebrating 100 Years of the Brea-Olinda Unified School District

by  
*Teresa Hampson*

Soon set to celebrate the start of its second century, the Brea Olinda Unified School district began in 1903 with a single-room rural schoolhouse and has evolved into an award-winning nine-campus educational system now serving nearly 6,000 students. The beginnings of Brea's schools and path they traveled toward today are the topics of this history.

Brea, in Spanish, means tar. Brea's earliest industry was oil, and its first education advocates were local leaders employed by the area's largest landowner - - - Union Oil. By the late 1890's, oil workers with families began moving into Brea Canyon, and their children were forced to walk, ride ponies or travel by horse cart to the closest schools - - - several miles west to La Habra Grammar, built in 1896, or several miles east to Olinda's "Little Red School," built in 1898. To remedy this situation, Union officials pushed for the creation of a local school district, and county supervisors quickly concurred.

Established as the Randolph School District on March 3, 1903, the newcomer to Orange County education employed a single teacher, Ellen Dickinson. For \$450 a year, Miss Dickinson rode on horseback to a tiny schoolhouse built by Union Oil in Brea Canyon and taught all subjects to all local students between the ages of six and 13. Secondary students continued their studies at Fullerton Union High School, opened in 1893 for its city's young scholars, and later expanded to serve the nearby districts of Buena Park, La Habra, Olinda, Orangethorpe, Placentia, Randolph and Yorba Linda.

Although only 24 students enrolled at the Brea Canyon school its first, its population soon swelled to more than 40, and the need for a larger building became clear. Voters approved a \$6,000 bond for new school construction in December of 1908. Completed in 1910 on the southwest corner of what is now Brea Boulevard and Lambert, Randolph School became the very first building in an otherwise empty town site. Two teachers and 51 students started school that September in its rustic, two-story frame structure, which featured two classrooms, a library, an office, a workroom and an assembly hall. Two years later, the fledgling district named Ralph

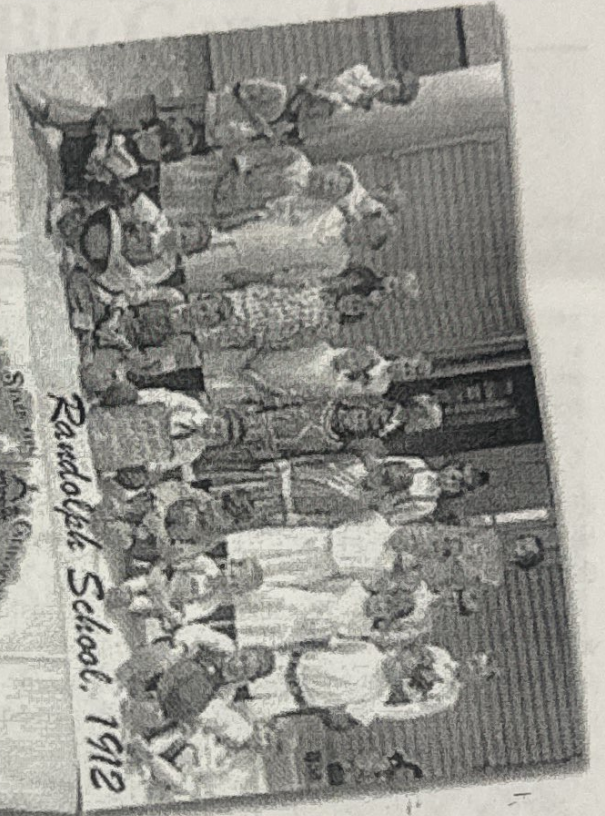
Jepsen as its first superintendent. By 1914, enrollment at Randolph School topped 200, and several new teachers and classrooms were added. William (W.E.) Fanning was hired as teacher/principal that year, beginning a 38-year career marked not only by strong educational leadership, but by community involvement that inspired a tradition of support for schools.

In the next two years, a change in sentiment and an increase in population saw the Randolph district renamed the Brea School District and grand plans unveiled for an impressive new grammar school. Built on a knoll at the northern edge of the settlement, this imposing Greek Revival structure, complete with classical columns, a carved portico, 10 classrooms, a 600-seat auditorium, reception and office space, cost the tax-paying public \$66,000, and was dedicated in 1916 as Brea Grammer School. (In 1956, it was redesignated Brea Junior High.)

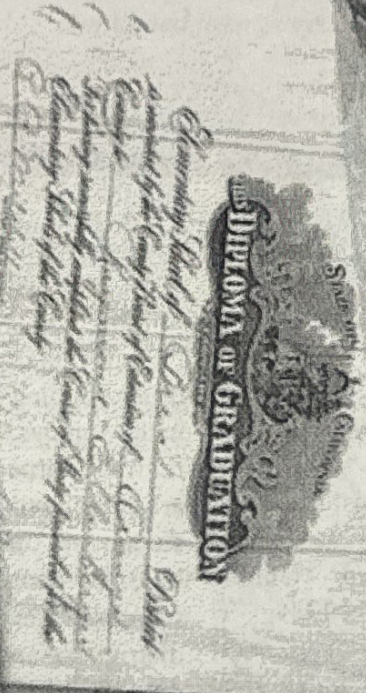
Principal Fanning and his staff of 11 teachers welcomed more than 300 students in Brea Grammar School's opening year, some of them walking from new nearby homes, and others picked up from surrounding canyons in a converted ice truck. Only a few buildings had been erected in town by 1916, and nothing as grand as the grammar school would rise for many more years. For these reasons, the campus quickly became a center of local life, as well as a focus for improvement efforts. A well-attended Old Masters art show, a "living art" exhibition, a performance by the Los Angeles Philharmonic and weekly silent movie screenings helped raise funds for cultural and aesthetic enhancements, which included potted plants, framed art prints, a phonograph and eventually a grand piano.

Brea became Orange County's eight incorporated city in 1917. Within three years, its nearly new grammar school ranked as one of the county's top learning centers, with well-paid teachers (earning an ample annual \$880), a quality curriculum, high-achieving students and a model campus. New playground equipment and tennis courts had been added to the school site, as well as base-

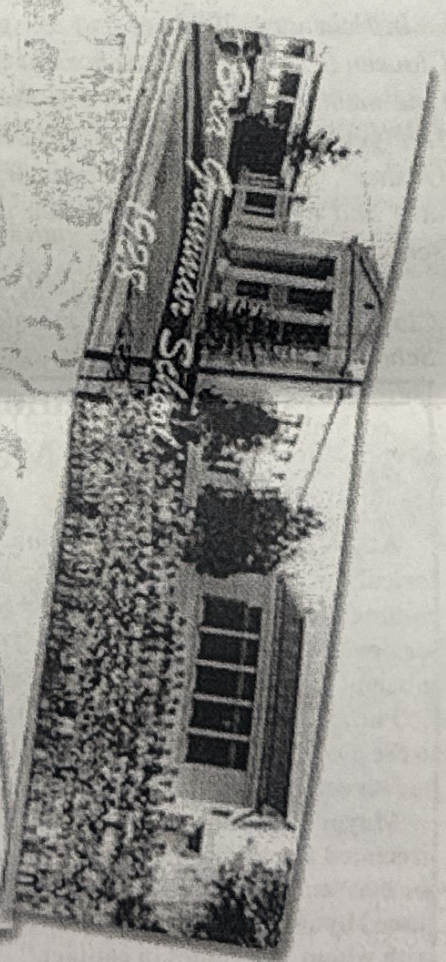
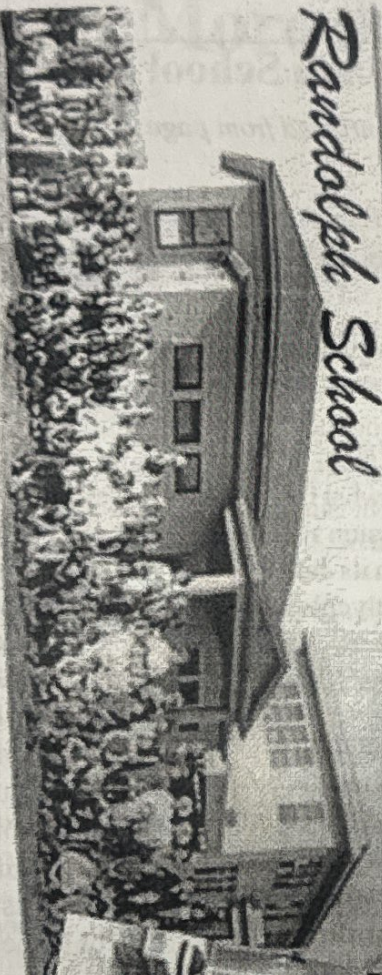
*continued on page 4*



Randalph School, 1912



Randalph School



Green Fraubear School, 1908



Laurel School



Green Fraubear School, 1918

## *Fond Memories of a Good Friend Virginia Clausen Day*



*In February, 2003 we lost our good friend Virginia Clausen Day. Virginia was born in Brea and was a long-time member and supporter of the Historical Society. Her yearly donation of the BOHS yearbook, "The Gusher", gave us a complete history of students, graduates and events that have taken place since the high school was built.*

*Virginia is pictured above (left) with her sister Vivian Clausen Hiebert in front of the old Brea-Olinda High School, in 1929.*

### **Pat Fox Commended at Council Meeting**

At the March 4, 2003 City Council Meeting, Brea Historical Society Vice President Pat Fox was honored in a commendation from Mayor Bev Perry for her long-time service on the Parks, Recreation and Human Services Commission.

Pat, the wife of former mayor Don Fox, was appointed to the position by then councilmember Lynn Daucher and has served the city for many years.

Mayor Perry commented that Pat is "truly, truly appreciated for all the wonderful things she has done" and for her "enrichment of our community." The mayor continued by saying that Pat receives "the high regard of those with whom she comes in contact."

We couldn't have said it better ourselves.

## **Brea-Olinda School District**

*continued from page 2*

ment assembly and cooking areas, frequently used for community functions. Hot meals in the new cafeteria sold for a nickel; sandwiches two for five cents.

Brea became a two-school town with the September 1921 opening of Laurel. Rushed to completion within six months as new houses sprouted around it, the \$50,000 campus actually opened without a kindergarten, and Laurel's smallest students began school at a retail and office building on what is now Brea Boulevard. Designed in the popular Mission style architecture of the 20's, Laurel was adorned in its earliest years by a large front-lawn arbor covered with colorful trumpet vines. With more students to transport, the district gained its first school bus, a 30-passenger Reo, when civic leader Ed Peterkin (owner of the earlier ice truck) purchased it in 1922 for district use and charter tours. By 1923, the district had promoted W.E. Fanning to superintendent and increased its enrollment to more than 600. Though still quite small, it also had fielded the county's largest, most influential parent-teacher association, and Brea's PTA was cited as highly instrumental in establishing not only the Orange County Public Library System, but several other countywide cultural institutions.

By 1925, an elementary school district had been operating in Brea for more than two decades and a separate elementary district in nearby Olinda had passed its quarter-century mark. Even so, there was no local high school, and secondary students from both Brea and Olinda traveled south to Fullerton Union High, in early years by large horse-drawn wagons and in later days on the trolley line's Red Cars. Changes made at the Fullerton campus in the 1920's, including cutbacks in such locally popular courses as oil production and horticulture, dismayed Brea's civic leaders, causing them to look closely at their town's growing student population - - - and take steps to form a new north-county high school district.

*Teresa Hampson is a member of the Brea School Board, a well-know local historian and the author of Brea: Celebrating 75 Years. On March 4, 2003 Terry, along with other school board members, accepted a special commendation from Mayor Bev Perry, signed by all councilmembers, recognizing the remarkable success of the school district over the past 100 years.*

*Next edition: The School District thrives and grows.*

# More About the "Big Game"

*continued from page 1*

cheon put on by the Brea Lions Club. No, it wasn't called Pioneer Hall then. It was the Boy Scout House, and the building was located right above the playing field, behind the old Union Oil headquarters.

After the food and the speeches, it was just a short walk for the players to an old tin oil tool company building where they changed into their uniforms.

Outside, cars had been arriving since early morning in order to be sure to find a parking space and a good seat.

Schools were closed, and local merchants all over the area shut their doors at noon, or 1 o'clock, so they could attend the game.

In fact, when the game began, it was reported that up to 15,000 excited spectators had packed into the Brea Bowl. They'd paid either \$1.00 for general admission, \$1.50 for bleacher seats or \$2.00 for reserved seats, all the money going to charity.

This was a real community celebration for Brea. Our Boy Scouts directed traffic, the American Legion Post provided security, local church women sold refreshments, and from Fullerton, the high school band played because old Brea-Olinda high school hadn't been built yet.

Shortly before 2:30, the players came down the hill onto the field and lined up for a group photo. Then it was the turn of the sponsoring Anaheim Elks Club members to stand with their local hero, Walter Johnson. Lastly, Babe Ruth posed for the press with some local boys who probably never forgot that moment. About 2:45 the game began with Johnson on the pitching mound.

Sadly though, he didn't do too well. After a tough pennant race, 3 games in 7 days in the World Series and non-stop exhibition games, his pitching arm just wasn't up to it.

In his 5 innings on the mound, he gave up 8 runs on 8 hits, 4 of them homers, 2 by Ruth, which delighted the crowd, and one by well-known Detroit Tiger's player Sam Crawford.

There's a story about the game that one of the hits made by Ruth, a foul ball, bounced off a car and hit a boy in the head. When he started crying, Ruth walked over to him, handed him a silver dollar and said, "Don't cry kid, here".

Oddly, it was Ruth who turned out to be the real pitching star of the game. Even though he hadn't pitched for 3 years, he ended up carrying a shut-out into the 9th inning.

The final score was 12 to 1 with Ruth's team the winner. It had been a tough game, especially for Johnson, and chances are he was disappointed with both his performance and the outcome.

The crowd though wasn't disappointed because they'd seen 2 of their big heroes in action, and they'd even been lucky enough to see Ruth hit the homers.

One of the balls used in the game is now kept at the Craig Park Ranger's office. What's really special about this ball is that it was signed by several of the players that day, Babe Ruth, Walter Johnson, Bob Muesel and others. This is the famous ball, but there was another autographed ball that hardly anyone knows about.

Babe Ruth had 2 batboys on the day of the game. One was young Jack Salveson, who years later would become a pitcher for the Hollywood Stars. The other was his friend, 12 year old Frog Winchel who was given the ball by Ruth.

Frog cherished that ball for years, always keeping it in a safe place. One day, years after the game, his young son, while they were living in a house on Walnut St. by City Hall Park, found the ball, took it outside and played with it in the street. When he brought it back in the house, the signatures were gone, scraped off by the asphalt.

I talked to Frog's son not long ago, and he said his dad wasn't too happy with him at the time.

Well, back to the story of the game, or actually after it, because the following day Walter and Hazel went to Olinda to visit with several of their old friends.

The day after that they did some sightseeing around Los Angeles, ending up at a movie studio where silent screen actor Douglas Fairbanks, Sr. gave them and Babe Ruth a tour of the set of his latest movie, "The Thief of Baghdad".

It had been a busy couple months for both Walter and Babe, culminating in their face-off right here in Brea.

It was a great game, but little did anyone know at the time how long people would be talking about it, including me.



*Walter Johnson poses with friends, former teammates and Anaheim Elks Club members before the "Big Game".*

## 2003 Brea Historical Society Officers

President, John Bickel                      Secretary, Wilma Sauer

Vice President, Tom                      Treasurer, Jim Grosse

The Brea Historical Society offices and Brea Museum are located at

652 S. Brea Blvd, Brea, CA  
(next to Mainly Seconds)  
(714) 255-2283

Museum hours are:  
Thursdays from 11am until 1pm  
Saturdays from 11am until 2pm

### Membership Renewal or Get a Friend to Join the Society

Individual .....	\$15.00
Family .....	\$25.00
Sponsor .....	\$50.00
Patron .....	\$100.00
Business Patron .....	\$250.00

Name: \_\_\_\_\_  
 Address: \_\_\_\_\_  
 City: \_\_\_\_\_ State: \_\_\_\_\_ Zip: \_\_\_\_\_ Ph #: \_\_\_\_\_

Mail your check to:  
Brea Historical Society  
PO Box 9764  
Brea, CA 92822-9764

## We Patronize Our Corporate Sponsors

*Unocal Corporation*  
376 S. Valencia Ave

*Pacific Western  
Nat'l Bank*  
275 N. Brea Blvd

*Taps Fish House  
& Brewery*  
101 E. Imperial Hwy

*Cookies by Design*  
(714) 255-9383

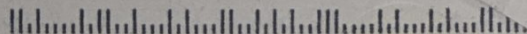


**Brea Historical Society**  
P.O. Box 9764  
Brea, CA 92822-9764

Non-Profit Organization  
U.S. POSTAGE  
PAID  
Permit No. 8117  
Anaheim, California

ADDRESS SERVICE REQUESTED

Kathy Canon  
1414 W Central Ave #21  
Brea CA 92821-2405



*We Patronize our Corporate Sponsors*

*Unocal Corporation  
376 S. Valencia Ave*

*Pacific Western Nat'l Bank  
275 N. Brea Blvd*

*Taps Fish House & Brewery  
101 E. Imperial Hwy*

*Cookies by Design  
(714) 255-9383*



**Brea Historical Society**  
P.O. Box 9764  
Brea, CA 92822-9764

Non-Profit Organization  
U.S. POSTAGE  
PAID  
Permit No. 8117  
Anaheim, California

ADDRESS SERVICE REQUESTED

**Kathy Canon**  
1414 W Central Ave #21  
Brea CA 92821-2405

**Don't forget the Spring Fling!**  
**May 15, 2003 at the Brea Bistro**

Visit our website:  
<http://www.breamuseum.org>





# Historical Happenings

A publication of  
the  
Brea Historical Society

Gazette

VOL. XX, No.4

April, 2003

## An Historic Timeline of the Old American Legion Building

1920 - The first Brea Post #181, American Legion building is constructed at the corner of Elm and Pomona Ave.

1928 - American Legion #181 sells the property that is now City Hall Park to the City of Brea for \$4,000 on the condition that they retain the "easterly 90 feet of said lot" for the purpose of constructing a new, more modern facility.

1929 - The official ground breaking for the new American Legion Building takes place, attended by local and state dignitaries.

1930 - After raising \$8,000 from the community, Brea Post #181 contracts with Fullerton builder P.N. Schmoker to begin construction on the new facility.

1934 - Brea Post #181 transfers ownership to the City of Brea with the provision that it could be reclaimed at any time during the subsequent 10 years by paying the city one dollar.

1934 - 1994 - American Legion Post #181 continues to occupy the building in conjunction with the Brea Police Department and an ambulance service. During the mid-

1990's, the building is vacated and left empty.

1991 - The American Legion Building is entered onto the National Register of Historic Places by the U.S. Department of the Interior in an effort driven by Council member Clarice Blamer.

2001 - Don Schweitzer, grandson of city pioneer Frank Schweitzer, Sr., submits a proposal to the City of Brea to turn this historic building into a permanent home for the Brea Museum & Heritage Center.

2002 - Brea Museum & Heritage Committee Chairman Don Schweitzer and Brea Historical Society President Kathy Canon sign an agreement with the City of Brea that initiates planning and fundraising efforts to begin earthquake retrofitting for the American Legion Building. The agreement specifies that once retrofitting is complete, the building will be leased to the Brea Historical Society for a period of 50 years for the sum of one dollar a year.

2003 - In January, retrofitting and construction commences on the historic Old American Legion building at City Hall Park, preparing for it's eventual reopening in the summer as the Brea Museum & Heritage Center.

### Renew Your Membership to the Brea Historical Society

Renewing your membership now is more important than ever! Membership dollars go to supporting our ongoing efforts to revitalize the historic Old American Legion Building and give it a new lease on life as the Brea Museum and Heritage Center. Thank You in advance for your renewal!

#### 2003 Membership Application

Individual .....	\$15.00
Family .....	\$25.00
Sponsor .....	\$50.00
Patron .....	\$100.00
Business Patron .....	\$250.00

Name: \_\_\_\_\_  
 Address: \_\_\_\_\_  
 City: \_\_\_\_\_ State: \_\_\_\_\_ Zip +4: \_\_\_\_\_ Ph #: \_\_\_\_\_

Mail your check to:  
 Brea Historical Society  
 PO Box 9764  
 Brea, CA 92822-9764

*We Patronize our Corporate Sponsors*

*Unocal Corporation  
376 S. Valencia Ave*

*Pacific Western Nat'l Bank  
275 N. Brea Blvd*

*Taps Fish House & Brewery  
101 E. Imperial Hwy*

*Cookies by Design  
(714) 255-9383*



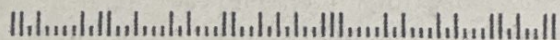
**Brea Historical Society**  
P.O. Box 9764  
Brea, CA 92822-9764

Non-Profit Organization  
U.S. POSTAGE  
PAID  
Permit No. 8117  
Anaheim, California

ADDRESS SERVICE REQUESTED

Kathy Canon  
1414 W Central Ave #21  
Brea CA 92821-2405

92821X2405 13



**Don't forget the Brea Home & Downtown Tour  
March 22 & March 29, 2003 at 10am and 2pm!**

Visit our website:  
<http://www.breamuseum.org>



# Historical Happenings

A publication of -  
the  
Brea Historical Society  
*Gazette*

VOL. XX, No.2

February, 2003

## Making a Dream a Reality

The Brea Museum and Heritage Center is finally becoming a reality...not just for the members of the Brea Historical Society, but for our community and for generations to come.

If you have been near Old City Hall Park recently, you may have noticed that something is happening to the old American Legion Building. Weekends have seen groups of people tearing out walls and ceilings to uncover the beautiful wood beams and floors of a new museum. Weekdays are filled with construction crews measuring, drilling and installing earthquake retrofitting materials.

This phase of the work is almost complete. But, there is so much more to do! Once the retrofitting is finished,

volunteers, material and time will be needed from our community to make our dream of a museum a reality. We will need help to clean and paint walls and floors. We will have display cases to build and lighting to install. We will have memorabilia, exhibits and ephemera to move, catalogue and set up for display.

Brea's history is rich with stories of our community coming together to build, create and celebrate. Be part of our ongoing history! Contact John Bickel or Don Schweitzer at (714) 255-2283 to see what projects are available for you to help with. Most work will be done on the weekends.

Be involved, have fun, meet your friends and help make a Dream a Reality.

### Many Thanks! Luis Armijo, Windtalker

The 2003 General Meeting of the Membership of the Brea Historical Society on Tuesday, January 28, 2003 was an enormous success with the largest turnout EVER at a general meeting!

This success was due largely to the speaker of the evening Fullerton resident Luis Armijo.

Armijo, a WWII Veteran and one of the Navajo "Windtalkers" spoke about how the Navajo language was used to create an unbreakable code that helped with the U.S. victory in WWII.

Thank you, Luis for making our meeting such a great success.

### Home and Downtown Walking Tour Resumes

Mark your calendars and get ready! The Brea Home and Downtown Tour is BACK for TWO weekends in March!

Saturday March 22 and Saturday March 29, 2003 at 10am and 2pm, tour groups will meet at the parking lot on the corner of Flower and Birch, 15 minutes before the tour times. Ticket price is \$5.00 with all proceeds going to the new Museum and Heritage Center.

The Ward Home (first recipient of the Historical Preservation Award) and the "Old Blue Bungalow" will be featured on the tour, along with a fresh aspect on the architecture and history of the "new" downtown. The tour covers about 1 mile and takes about an hour and a half. Wear comfy shoes and have fun!

### Renew Your Membership to the Brea Historical Society

Renewing your membership now is more important than ever! Membership dollars go to supporting our ongoing efforts to revitalize the historic Old American Legion Building and give it a new lease on life as the Brea Museum and Heritage Center. Thank You in advance for your renewal!

#### 2003 Membership Application

Individual .....	\$15.00
Family .....	\$25.00
Sponsor .....	\$50.00
Patron .....	\$100.00
Business Patron .....	\$250.00

Name: \_\_\_\_\_  
Address: \_\_\_\_\_  
City: \_\_\_\_\_ State: \_\_\_\_\_ Zip +4: \_\_\_\_\_ Ph #: \_\_\_\_\_

Mail your check to:  
Brea Historical Society  
PO Box 9764  
Brea, CA 92822-9764